

The background features a collage of four images: a construction worker in a hard hat and safety vest, two children in white clothing, a family with a woman in a red floral dress and a man holding a child, and a modern house. The entire image has a blue overlay.

# City of San Antonio FY 2020 Proposed Annual Operating & Capital Budget

Health Department

Presented by:  
Jennifer Herriott, Interim Health Director

City Council "B" Session  
August 13, 2019

# METRO HEALTH

Healthy people thriving in a healthy  
community

PREVENT. PROMOTE. PROTECT.



**429**  
employees



**164**  
community  
locations



CITY OF SAN ANTONIO  
METROPOLITAN HEALTH DISTRICT



**23**  
city facilities



over  
**168,350**  
residents served<sub>3</sub>

# DEPARTMENT OVERVIEW

## Communicable Disease



**PREVENT**  
Illness

## Community Health



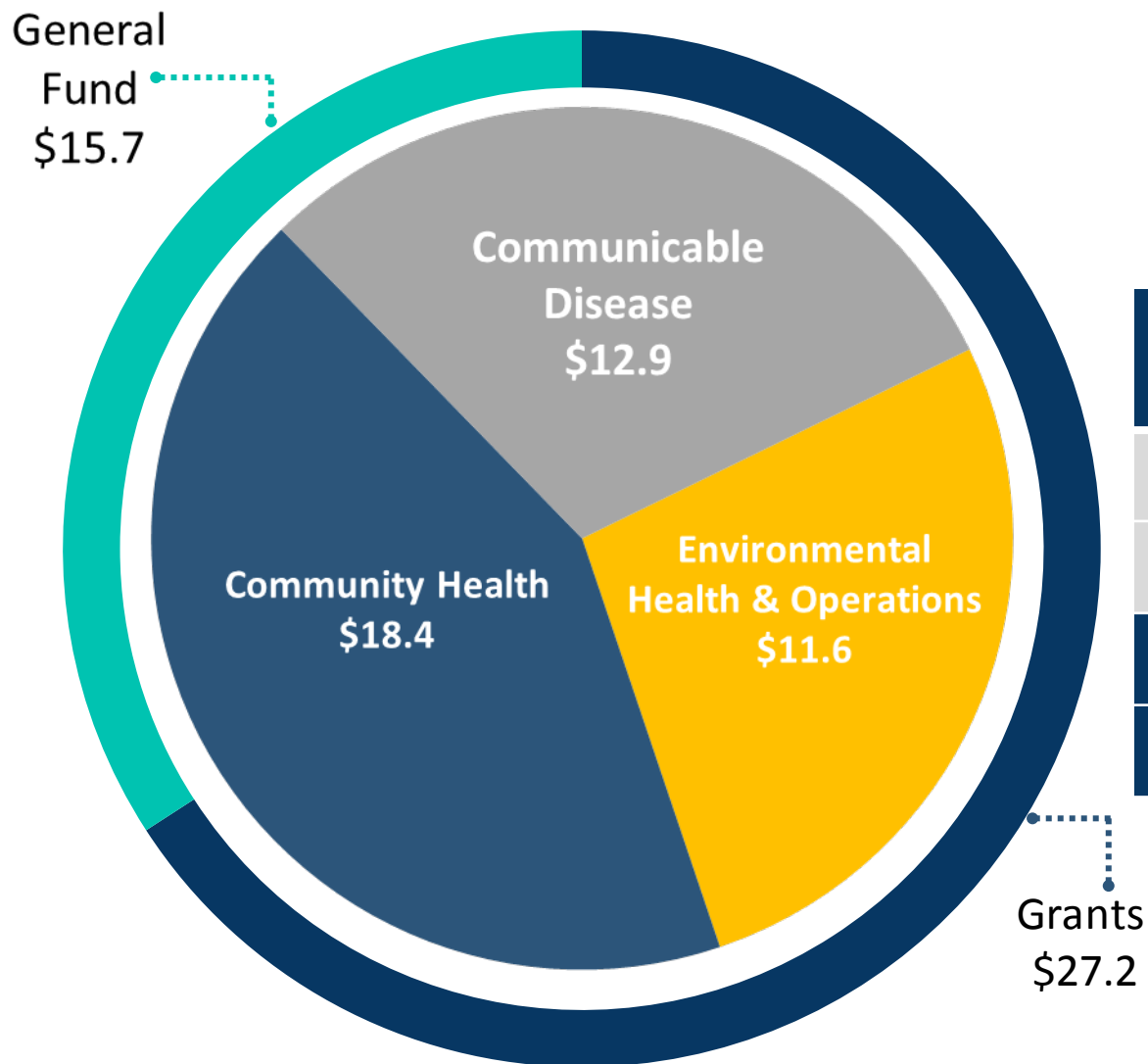
**PROMOTE**  
Healthy behavior

## Environmental Health & Operations



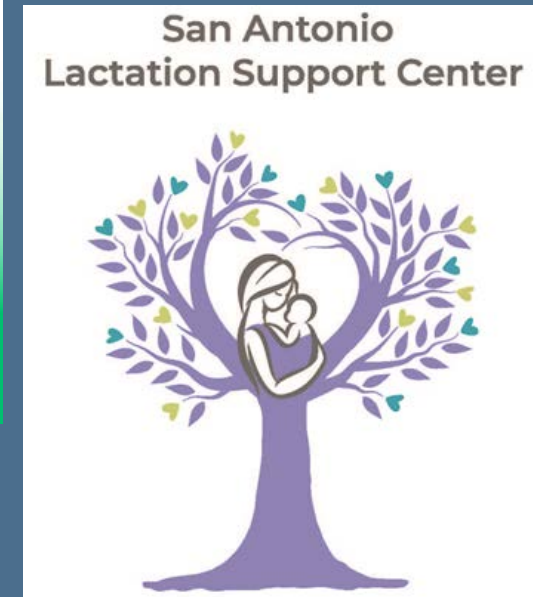
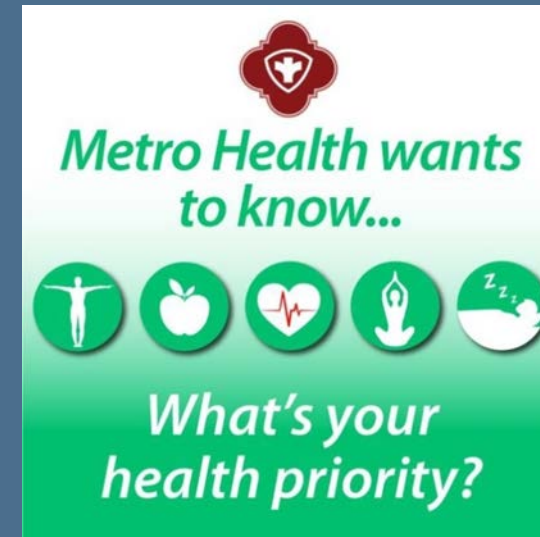
**PROTECT**  
Against health hazards

# FY 2020 Proposed Budget \$42.9 Million



Fund	FY 2019	FY 2020	Variance
General Fund	\$14.1	\$15.7	\$1.6
Grants	\$29.3	\$27.2	\$(2.1)
Totals	\$43.4	\$42.9	\$(0.5)
Positions	423	429	6

# FY 2019 ACCOMPLISHMENTS



# SA KIDS BREATHE




**SA Kids  
B.R.E.A.T.H.E.**

Building Relationships,  
Effective **ASTHMA**  
Teaching in Home  
Environments


Contact us for  
more info:  
210.207.7282

#SAKidsBREATHE


3+ Home Visits




Healthcare  
Provider  
Visit



School or  
Daycare  
Visit



	
Referrals	47
Eligible	43
1 <sup>st</sup> Home Visit	20
2 <sup>nd</sup> Home Visit	13

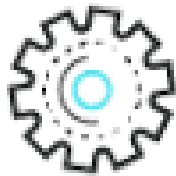
# ADVERSE CHILDHOOD EXPERIENCES



Preventing



• **Adverse Childhood Experiences**



Established the South Texas Trauma Informed Care Consortium

- 500 members
- Working in 12 sectors

Developed business plan to establish Trauma Informed Care Certifying Entity

# EMBEDDING EQUITY IN METRO HEALTH



## Implemented:

- Office of Health Equity
- Establish Health Equity Leadership Team
- Staff training - Health Equity, Social Determinants of Health and Community Engagement

## FY 2020 Expansion:

- Inclusion of communities of color and low income communities on advisory boards
- Compensation of community members doing outreach through REACH Grant

# PAID SICK LEAVE - \$549,340

**4 Positions**

**Outreach &  
Education**

**Compliance  
Assistance**

**Training &  
Resources**

---

Complaint-based enforcement program

# BUDGET EFFICIENCIES



**STD Registration &  
Phlebotomy  
Assistance**



**Air Pollution  
Business Liaison**



**Consolidation of  
Maintenance  
Process**

# WHAT TO EXPECT IN FY 2020

## Strategic Plan

### Four Strategic Health Priorities:

1. Adverse Childhood Experiences
2. Violence Prevention
3. Access to Care
4. Nutrition

# ADVERSE CHILDHOOD EXPERIENCES



Healthy Teen Relationships



Parent Support Systems



Increase Community Awareness

# VIOLENCE PREVENTION



Preventing Domestic Violence

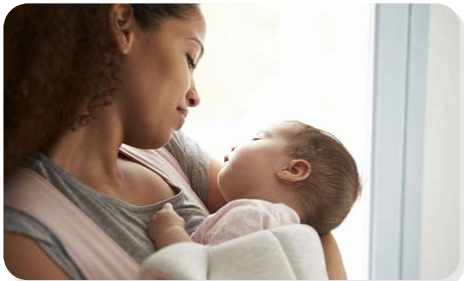


Preventing Child Abuse



Reducing Gun Violence

# ACCESS TO CARE



**Advancing Economic Stability**

**Increasing access to Immigrant Friendly Services**

**Preventing depression in mothers and adolescents**

# NUTRITION



Expanding use of Community Nutrition Standards

Improving Childhood Nutrition

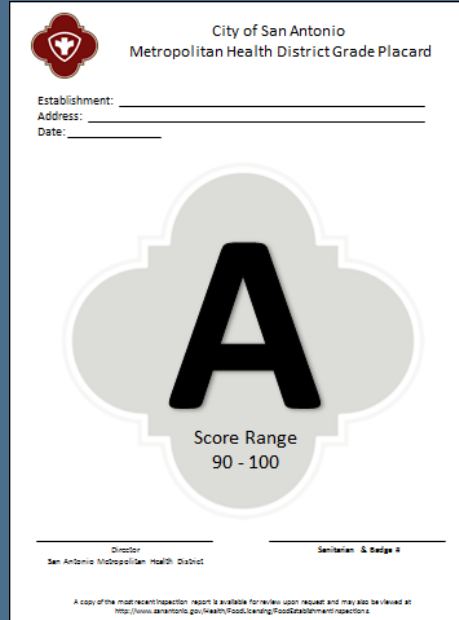
Increasing Access to affordable Healthy Food and Beverages

# WHAT TO EXPECT IN FY 2020

## Other Initiatives



**Revitalizing Por  
Vida Healthy  
Menu Program**



**Restaurant Grade  
Placards**



**Ozone  
Attainment  
Master Plan**

# City of San Antonio FY 2020 Proposed Annual Operating & Capital Budget

Health Department

Presented by:  
Jennifer Herriott, Interim Health Director

City Council "B" Session  
August 13, 2019