

Light Industrial



Regional Commercial



Low Density Residential



Community Commercial



Public/ Institutional



Industrial



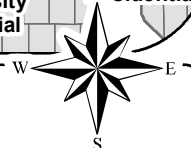
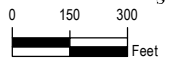
Parks/Open Space



Subject Property



200' Notification Area



Data Source: City of San Antonio Enterprise GIS, Bexar Metro 911, Bexar Appraisal District  
 "This Geographic Information System Product, received from The City of San Antonio is provided 'as is' without warranty of any kind, and the City of San Antonio expressly disclaims all express and implied warranties, including but not limited to the implied warranties of merchantability and fitness for a particular purpose. The City of San Antonio does not warrant, guarantee, or make any representations regarding the use, or the results of the use, of the information provided to you by the City of San Antonio in terms of correctness, accuracy, reliability, timeliness or otherwise. The entire risk as to the results and performance of any information obtained from the City of San Antonio is entirely assumed by the recipient."  
 "These are not the responsible City of San Antonio Department for specific determinations."  
 City of San Antonio Planning Department. Maps may be ordered at: (210) 207-7873

Map Created by: DianaDee Molina  
 Map Last Edited: 03/14/19  
 PDF Filename: 1803GG.pdf  
 Map file Location: \\fscommon\\misc29\\GIS\\P\\In50\\plan\_lib\\Projects2019\\Development\\svcs\\PlanAmendments\_03062019\\PA2019\_0002A\\Amend\_18051\_110E\\Corridor\_B&WLU\_03142019.mxd

# IH-10 E Corridor Perimeter Plan Proposed Plan Amendment 2019\_11600012

City of San Antonio  
 Planning and Community  
 Development Department

John M. Dugan, AICP  
 Director

Cliff Morton Development and  
 Business Services Center  
 PO Box 830966  
 San Antonio, TX 78283

