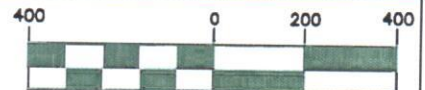


# **ABBREVIATIONS**

DPR DEED AND PLAT RECORDS OF BEXAR COUNTY, TEXAS  
OPR OFFICIAL PUBLIC RECORDS OF BEXAR COUNTY, TEXAS  
MAG SET MAG NAIL WITH PAPE-DAWSON SHINER

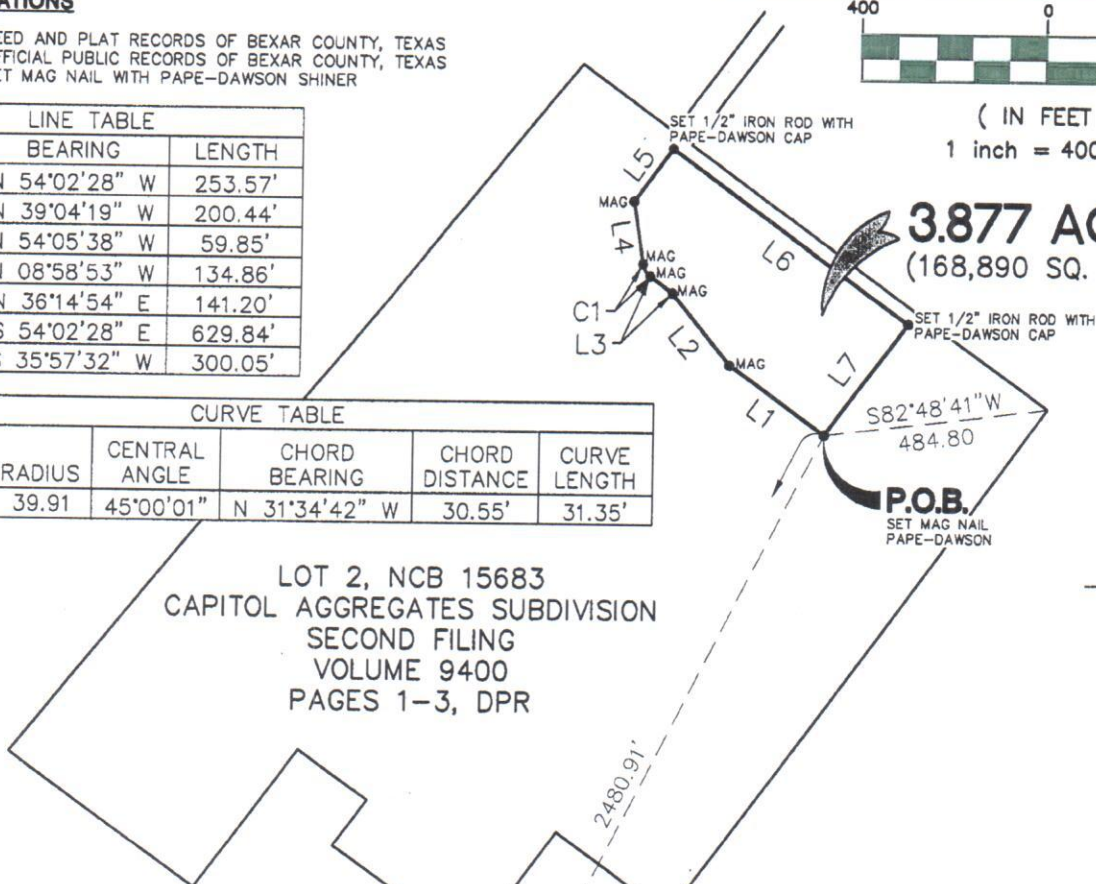
LINE TABLE		
LINE	BEARING	LENGTH
L1	N 54°02'28" W	253.57'
L2	N 39°04'19" W	200.44'
L3	N 54°05'38" W	59.85'
L4	N 08°58'53" W	134.86'
L5	N 36°14'54" E	141.20'
L6	S 54°02'28" E	629.84'
L7	S 35°57'32" W	300.05'

CURVE TABLE					
CURVE	RADIUS	CENTRAL ANGLE	CHORD BEARING	CHORD DISTANCE	CURVE LENGTH
C1	39.91	45°00'01"	N 31°34'42" W	30.55'	31.35'



( IN FEET )  
1 inch = 400 ft.

**3.877 ACRES**  
(168,890 SQ. FT.±)



## **NOTES:**

- 1) THE BEARINGS FOR THIS EXHIBIT ARE BASED ON THE NORTH AMERICAN DATUM OF 1983 (CORS 1996), FROM THE TEXAS COORDINATE SYSTEM ESTABLISHED FOR THE SOUTH CENTRAL ZONE.
- 2) THE PROFESSIONAL SERVICES PROVIDED HERewith INCLUDE THE PREPARATION OF A METES AND BOUNDS DESCRIPTION.

PORTION OF  
603.279 ACRES  
VOLUME 9565  
PAGE 169, OPR

WURZBACH PARKWAY  
PARCEL 51 (E)  
1.140 ACRES  
VOLUME 6170  
PAGE 1527  
OPR

WURZBACH PARKWAY  
(RIGHT-OF-WAY VARIES)

NACODOGES ROAD  
(RIGHT-OF-WAY VARIES - 80' MINIMUM)



10-3-11

**PAPE-DAWSON ENGINEERS**

555 EAST RAMSEY | SAN ANTONIO TEXAS 78216 | PHONE: 210.375.9000  
FAX: 210.375.9010

TEXAS BOARD OF PROFESSIONAL ENGINEERS, FIRM REGISTRATION # 470  
TEXAS BOARD OF PROFESSIONAL LAND SURVEYORS, FIRM REGISTRATION # 100288-00  
Copyright © 2011 Pape-Dawson Engineers, Inc. All Rights Reserved.

**EXHIBIT OF  
3.877 ACRE LEASE  
SAN ANTONIO  
BEXAR COUNTY, TEXAS**

JOB No.: 7655-00

FIELD NOTES  
FOR  
3.877 ACRE LEASE

A 3.877 acre, or 168,890 square feet more or less, tract of land out of a Lot 2, Capitol Aggregates Subdivision, Second Filing, recorded in Volume 9400, Pages 1-3 of the Deed and Plat Records of Bexar County, Texas, now in New City Block (N.C.B.) 15683 of the City of San Antonio, Bexar County, Texas. Said 3.877 acre tract being more fully described as follows, with bearings based on the North American Datum of 1983 (CORS 1996), from the Texas Coordinate System established for the South Central Zone;

BEGINNING: At a set MAG nail with a disk stamped "Pape Dawson" at the south corner of the herein described 3.877 acre tract of land. Said Point of Beginning bears N 26°45'06" E, a distance of 2480.91 feet from a found TxDOT Highway Monument, Type III, on the northeast right-of-way line of Wurzbach Parkway, a variable width right-of-way, at the west corner of a 1.140 acre tract of land called "Parcel 51 (E)", described in a deed recorded in Volume 6170, Page 1527 of the Official Public Records of Bexar County, Texas. Said Point of Beginning also bears S 82°48'41" W, a distance of 484.80 feet from the easternmost corner of said Lot 2, Capitol Aggregates Subdivision, Second Filing;

THENCE: Over and across said Lot 2 for the following bearings and distances:  
N 54°02'28" W, a distance of 253.57 feet to a set MAG nail with a Pape-Dawson shiner,  
N 39°04'19" W, a distance of 200.44 feet to a set MAG nail with a Pape-Dawson shiner,  
N 54°05'38" W, a distance of 59.85 feet to a set MAG nail with a Pape-Dawson shiner,  
Northwesterly, along the arc of a non-tangent curve to the right, having a radial bearing of N 35°55'18" E, a radius of 39.91 feet, a central angle of 45°00'01", a chord bearing and distance of N 31°34'42" W, 30.55 feet, for an arc distance of 31.35 feet to a set MAG nail with a Pape-Dawson shiner,  
N 08°58'53" W, a distance of 134.86 feet to a set MAG nail with a Pape-Dawson shiner,  
N 36°14'54" E, a distance of 141.20 feet to a set ½ inch iron rod with a Pape-Dawson cap,



S 54°02'28" E, a distance of 629.84 feet to a set ½ inch iron rod with a Pape-Dawson cap,

S 35°57'32" W, a distance of 300.05 feet to the POINT OF BEGINNING, and containing 3.877 acres in the City of San Antonio, Bexar County, Texas. Said tract being described in accordance with a survey made on the ground and a survey exhibit prepared by Pape-Dawson Engineers, Inc.

PREPARED BY:	Pape-Dawson Engineers, Inc.
DATE:	October 3, 2011
JOB NO.	7655-00
DOC. ID.	N:\CIVIL\7655-00\WORD\7655-00 3.877ac Lease Area.doc

