

RESOLUTION NO.

RECOMMENDING TO APPROVE AN AMENDMENT TO THE MAJOR THOROUGHFARE PLAN, A COMPONENT OF THE CITY OF SAN ANTONIO MASTER PLAN BY RE-ALIGNING AND RE-DESIGNATING A PROPOSED SEGMENT OF THE EAST & WEST CONNECTOR FROM AN ENHANCED SECONDARY ARTERIAL (120' TO 142' OF RIGHT-OF-WAY) TO A SECONDARY ARTERIAL TYPE A (86' OF RIGHT-OF-WAY) GENERALLY LOCATED IN SOUTHERN BEXAR COUNTY, BETWEEN ROOSEVELT AVENUE AND THE SAN ANTONIO RIVER.

WHEREAS, the Planning Commission is charged by the City Charter with the responsibility to make, amend, extend, and add to the City of San Antonio Master Plan for the physical growth and development of the City; and

WHEREAS, the City of San Antonio Major Thoroughfare Plan was adopted on September 21, 1978 by City Council as a component of the City of San Antonio Master Plan; and

WHEREAS, the Planning Commission held public hearings on September 25, 2019 allowing all interested citizens to be heard.

NOW, THEREFORE, BE IT RESOLVED BY THE PLANNING COMMISSION OF THE CITY OF SAN ANTONIO:

SECTION 1: The amendment to the Major Thoroughfare Plan, a component of the Master Plan of the City, is herein approved and recommended to City Council for adoption to:

1. Realign and redesignate a proposed segment of the East & West Connector from an Enhanced Secondary Arterial (120' to 142' of right-of-way) to a Secondary Arterial Type A (86' of right-of-way) generally located in southern Bexar County, between Roosevelt Avenue and the San Antonio River

The Amendment is more particularly described in **Attachment "A,"** attached hereto and incorporated herein for all purposes.

PASSED AND APPROVED ON THIS 25th DAY OF SEPTEMBER 2019.

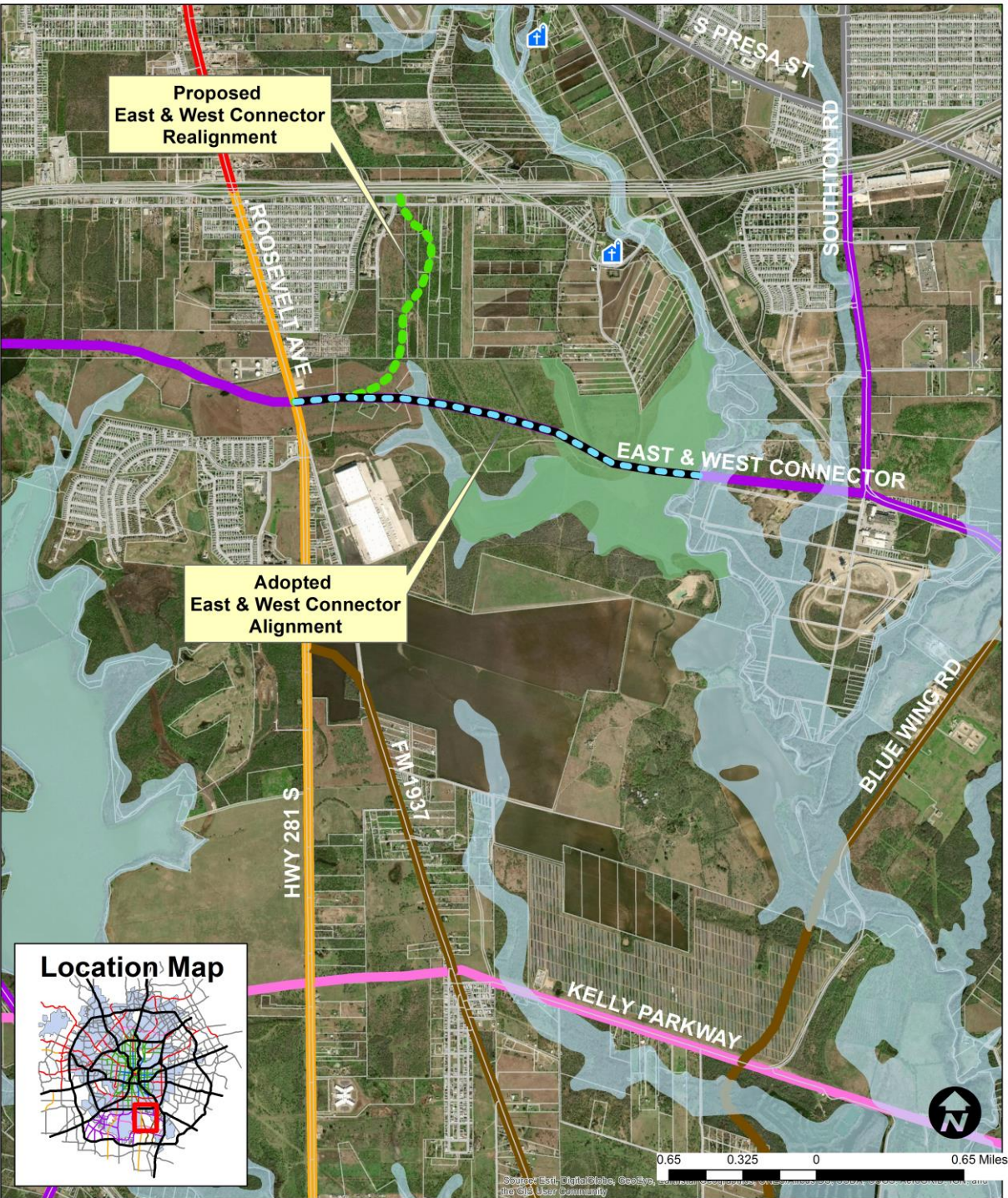
Approved:

Attest:

Christopher Garcia, Chair
San Antonio Planning Commission

Executive Secretary
San Antonio Planning Commission

MAJOR THOROUGHFARE PLAN (MTP) AMENDMENT TO EAST & WEST CONNECTOR ATTACHMENT A



AMENDMENT ADOPTED MTP

- | | |
|--|---|
|  Missions |  Enhanced Secondary Arterial |
|  Adopted East & West Alignment |  Primary Arterial Type A |
|  Proposed East & West Connector Realignment |  Rural Roadway |
|  Open Space Preservation |  Secondary Arterial Type A |
|  100-Year Floodplain |  Super Arterial Type A |
| |  Super Arterial Type B |