

AlamoPROMISE

Program Overview

alamo.edu/promise

NORTHEAST LAKEVIEW COLLEGE

NORTHWEST VISTA COLLEGE

PALO ALTO COLLEGE

SAN ANTONIO COLLEGE

ST. PHILIP'S COLLEGE



ALAMO
COLLEGES
DISTRICT

Five-Year Impact*

1% increase to metro

GDP

\$1.4 billion

in direct economic impact

\$230 million

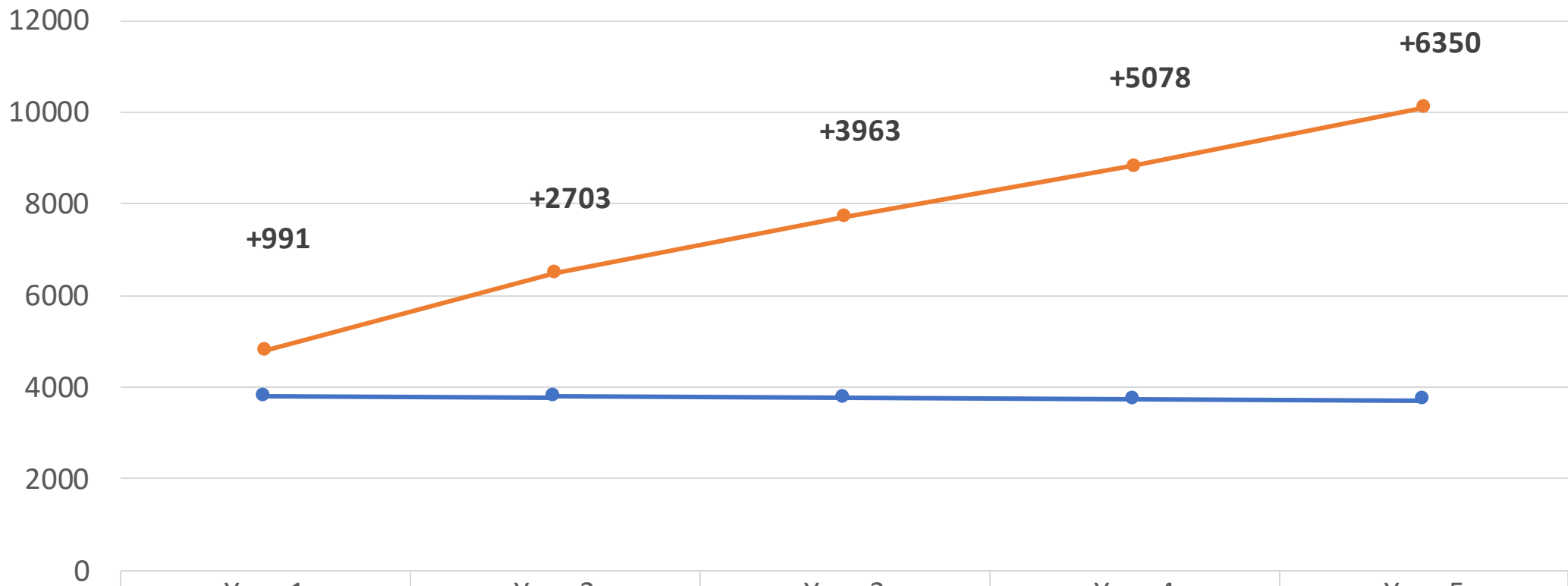
more income to workers

4,800 new jobs

* Preliminary economic impact analysis estimates, June 2019

ACD College-Going Growth with Promise

Anticipated Net Increase for Alamo Colleges Enrollment with AlamoPROMISE



	Year 1	Year 2	Year 3	Year 4	Year 5
Without PROMISE*	3816	3790	3764	3750	3750
With PROMISE	4807	6492	7726	8828	10100
Net Gain at ACD	991	2703	3963	5078	6350

*IRES Enrollment Projections, June 2019

College-Going Growth with Promise



Projected total net increase in ACD students over five years: **19,085 new students**, doubling the total enrollment of new students over five years.



Target increase in **ACD college-going** rate from 20% pre-Promise to **45%** in Year 5 for participating high schools.



Target increase in **overall higher-ed going rate** from 49% pre-Promise to **70%** in Year 5 for participating high schools.

An Investment in Local Talent

36,000

students over five
years

18,000

new college
graduates

An aerial photograph of San Antonio, Texas, featuring the city skyline with various skyscrapers and buildings. A prominent green-domed tower is visible on the left. The foreground shows a wide river with a bridge, surrounded by lush green trees and a busy multi-lane highway with many cars. The entire image is covered with a semi-transparent blue filter.

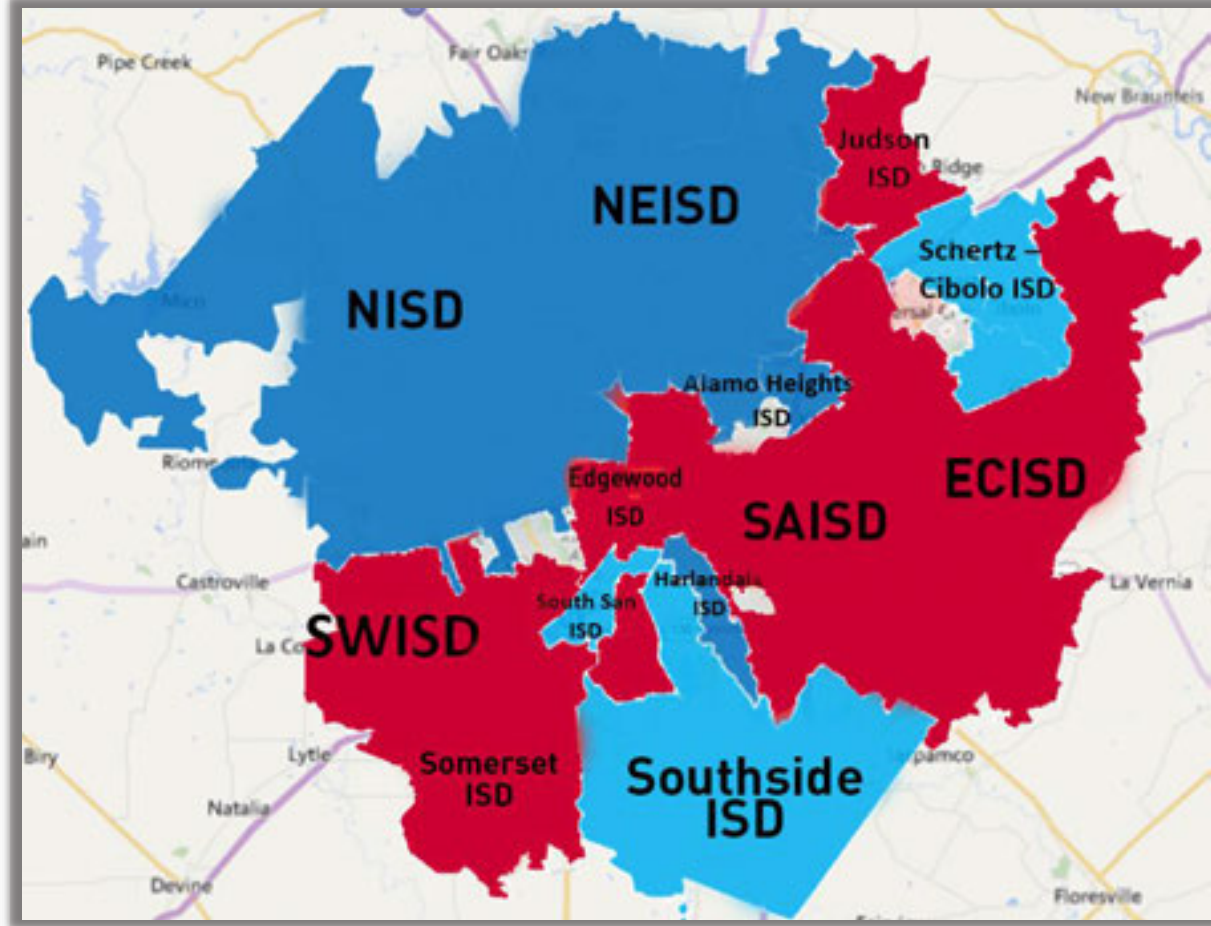
OUR MOONSHOT

Partnering to end poverty
through Education
in the Greater
San Antonio
region.

College Participation Rate

Bexar County 2017 High School Graduates Enrolled in TX Colleges*

District	Total Grads	Enrolled in College	% Not Found or Trackable
Alamo Heights	411	226 (55%)	185 (45%)
Northside	6856	3511 (51%)	3345 (49%)
Harlandale	986	502 (51%)	484 (49%)
North East	4981	2527 (51%)	2454 (49%)
Schertz-Cibolo-U City	1247	606 (49%)	641 (51%)
Southside	325	150 (46%)	175 (54%)
South San	533	240 (45%)	293 (55%)
San Antonio	2672	1125 (42%)	1547 (58%)
Somerset	250	105 (42%)	145 (58%)
East Central	697	284 (41%)	413 (59%)
Southwest	855	346 (40%)	509 (60%)
Judson	1343	539 (40%)	804 (60%)
Edgewood	591	210 (36%)	381 (64%)



*THECB: High School Graduates Enrolled in Higher Education the Following Fall

Community Educational Attainment



By 2020, 65% of jobs require credentials beyond high school. Only 33% of adults have an associate's or higher in San Antonio.



In Bexar County, only 11% of 8th grade students from low-income families earn a two- or four-year degree six years after high school graduation.



In San Antonio, only 45% of high school seniors attend college, and only 33% graduate, which is 12% lower than the U.S. average.



Student Profile

62% Hispanic

8% African-American

24% White

3% Asian

3% Other

57% Female

43% Male

19% Full-Time

81% Part-Time



70% Receive
Financial Aid



62% Underprepared
Students

100,258

Total Enrollment

91% San Antonio*

* 91% of students live
within the City of San
Antonio.



The background image shows two men in a workshop setting. They are both wearing white hard hats. The man on the left has a beard and glasses. They are working on a large blue electrical panel with various wires and components. The background is a wooden wall with some equipment hanging on it.

\$9,400

The average associate degree graduate from the Alamo Colleges will see an increase in earnings of \$9,400 each year compared to someone with a high school diploma working in Texas.

What Is A College Promise?



A **commitment** to fund a college education for every eligible hardworking student advancing on the path to earn a college degree, a certificate, and/or credits that transfer to a four-year university, starting in America's community colleges.



A **promise** to prepare students for the 21st Century workforce and the pursuit of the American Dream without the burden of unmanageable college debt.



A **promise** to make the first two years of community college as universal and accessible as public high school has been in the 20th Century.



The College Promise Movement

3 years

Increase from 1 to **23**
statewide Promise
programs with new
launches on the
horizon.

From **53** programs
in 2015

To **300+** programs
in 44 states by 2018

College Promise Leaders' Goals



Lower student's tuition and non-tuition expenses. Transportation, books, supplies, childcare, housing.



Provide sustainable financing. Stable and sustainable state and local revenue models supported by government with public and private sector partners.



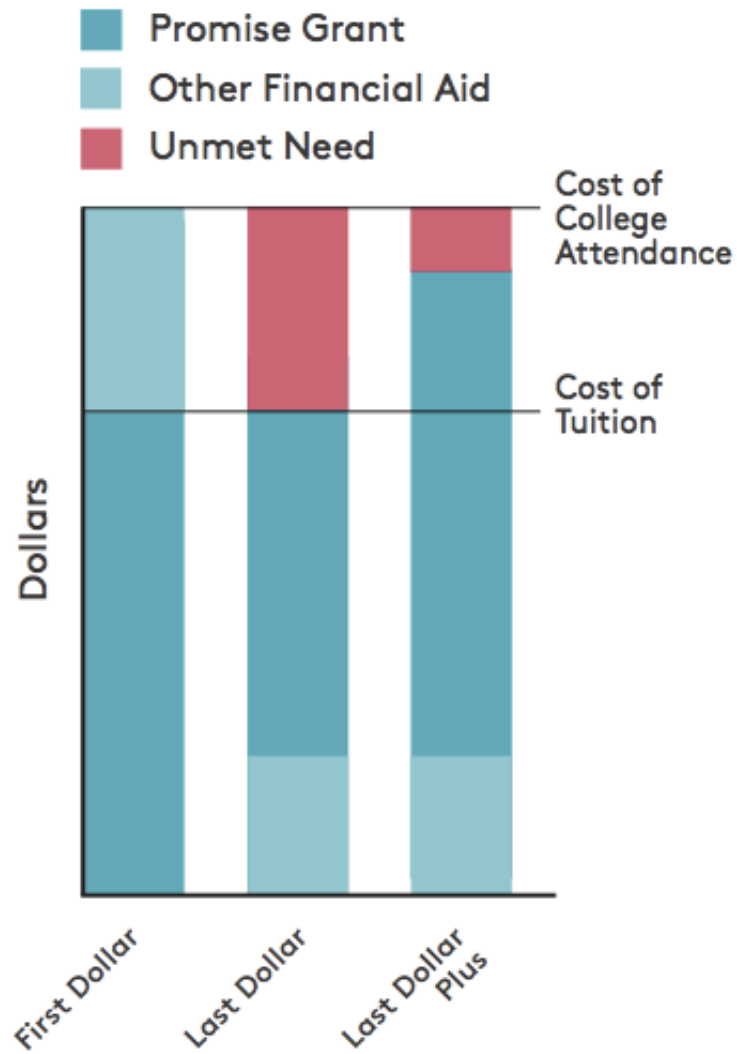
Leverage what works. Evidence-based high impact strategies: co-requisite remediation, intensive boot camps for underprepared students, mentoring, dual enrollment, paid internships, undergraduate research



Provide clear messaging. A PROMISE.



Funding the Promise: Three Approaches



First Dollar. Covers tuition and fees outright, and enables other financial assistance, like Pell Grant, to cover additional expenses, like textbooks and supplies.

Last Dollar. Fills the gap between a student's financial aid and the cost of tuition and fees.

Last Dollar Plus. Fills the gap between a student's financial aid and the cost of tuition and fees, but may also provide funding for additional expenses.





AlamoPROMISE: Last-dollar Scholarship

High school seniors meet a Free Application for Federal Student Aid (FAFSA) deadline and “last-dollar scholarship” funds are applied to after other state, federal, and gift aid are exhausted.

Promise funding fills the gap between a student’s financial aid award and the cost of tuition for the first two years at the Alamo Colleges.

Initial Promise Outcomes

Significant increases in enrollment of first generation, underrepresented, underserved students.

Increased persistence from semester to semester.

Increased college aspirations in youth and adults.

Reduction in number and size of college loans.



Promise Program Outcomes



40%
increase in
community
college
enrollment.



62%
increase in
persistence rate
(fall to spring).



16%
increase in
community
college
retention rate.



33%
increase in
college
completion rate.



ALAMO
COLLEGES
DISTRICT



Promise Strategies for Results



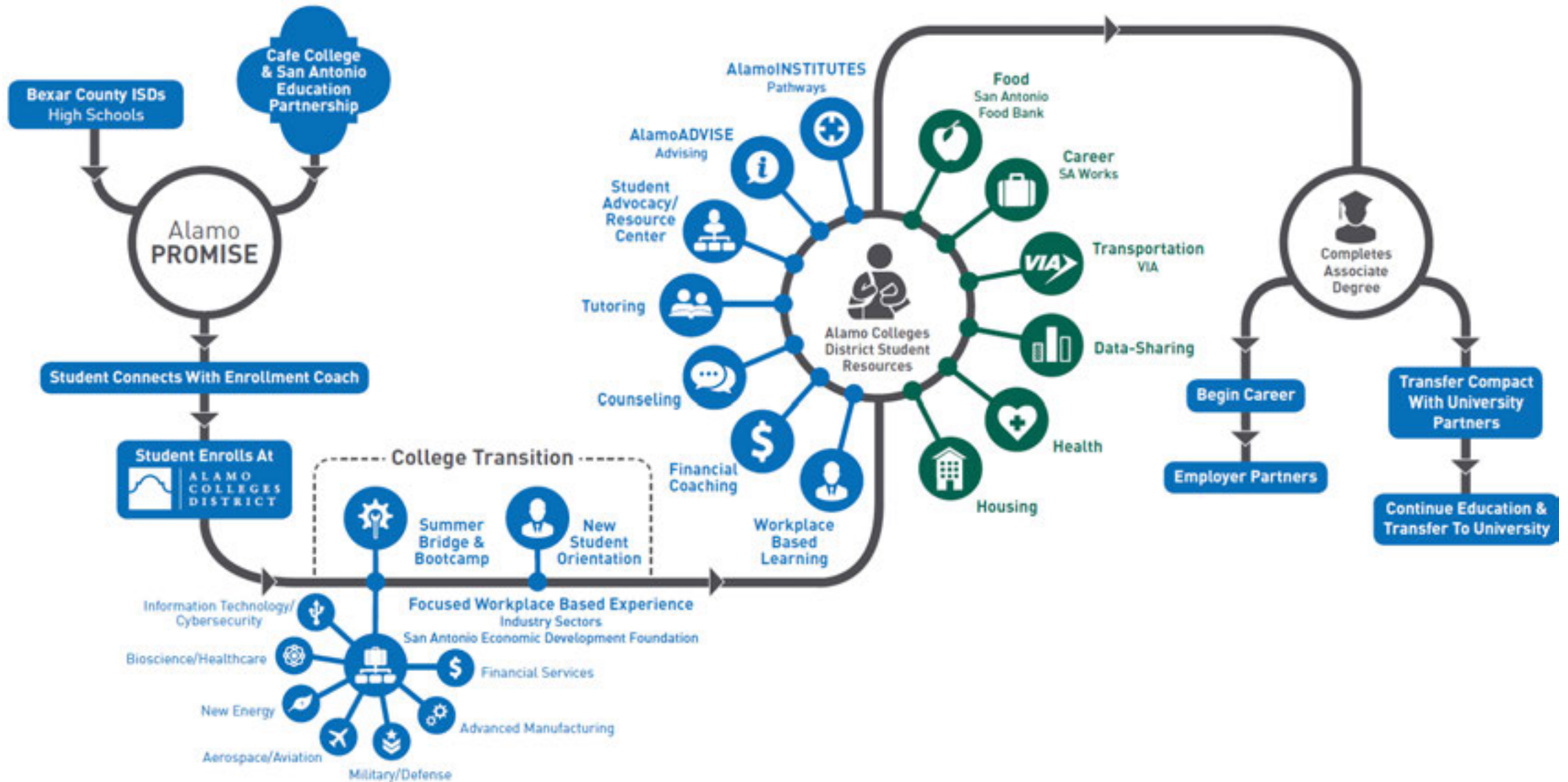
Increasing Access

Removing Barriers

Enhancing Student Experience

Aligning to High-Wage,
High-Demand Careers via
Experiential Learning

The AlamoPROMISE Network Strategy



Phase 1 High Schools, 2020-2021

25 High Schools

Predominantly low college-
going rates

9,952 Seniors

3,036 Projected Enrollment

31% Enrollment at ACD

PHASE 1 HIGH SCHOOLS

BRACKENRIDGE	JUDSON
BURBANK	LANIER
EAST CENTRAL	LEGACY
EDISON	LEE
FOX TECHNICAL	MCCOLLUM
HARLANDALE	MEMORIAL
HIGHLANDS	ROOSEVELT
HOLMES	SOMERSET
HOUSTON	SOUTH SAN
JAY	SOUTHSIDE
JEFFERSON	SOUTHWEST
JOHN F KENNEDY	WAGNER
YOUNG WOMEN'S LEADERSHIP	



ALAMO
COLLEGES
DISTRICT



Phase 2 High Schools, 2021-2022

PHASE 2 HIGH SCHOOLS

ALAMO HEIGHTS

MARSHALL

BRANDEIS

O'CONNOR

BRENNAN

RANDOLPH

CHURCHILL

REAGAN

CLARK

ROBERT G COLE

HARLAN

STEVENS

HEALTH CAREERS

STACEY

JOHNSON

TAFT

MACARTHUR

WARREN

MADISON

INTERNATIONAL
SCHOOL OF AMERICAS

20 High Schools

Remaining Bexar County High
Schools

9,815 Seniors

2,570 Projected Enrollment

24% Enrollment at ACD



ALAMO
COLLEGES
DISTRICT



Scholarship Contributions & Needs

AlamoPROMISE Last-dollar Scholarship Contributions & Needs	Year 1 FY2021 Fa20/Sp21	Year 2 FY2022 Fa21/Sp22	Year 3 FY2023 Fa22/Sp23	Year 4 FY2024 Fa23/Sp24	Year 5 FY2025 Fa24/Sp25	5-Yr TOTAL
Alamo Colleges Foundation (Promise Scholarship)	-	316,518	580,003	1,636,771	1,893,538	4,426,830
Alamo Colleges Grant Aid (TPEG)	261,621	895,528	1,523,154	2,001,643	2,325,686	7,007,632
Federal Financial Aid (Pell)	5,082,435	12,295,012	19,242,919	24,034,758	27,948,540	88,603,665
Promise Scholarship Needs (City & County)	308,437	2,848,662	5,220,031	6,547,084	7,574,150	22,498,364
TOTAL	5,652,492	16,355,721	26,566,108	34,220,256	39,741,914	122,536,491

Over five years, approximately 36,000 unduplicated students will be served.



Current Partnerships



\$450,000

Committed to date by private funders for Year 1 program costs.

19 Partners

Steering Committee Members from industry, non-profits, universities, chambers, and government.

Timeline Highlights Of AlamoPROMISE

2018-2019: EXPLORATION

- **Research best practices:** Texas Promise Convening and San Antonio Delegation to Dallas County Promise in December 2018
- **Conversations with key stakeholders:** City, County, Economic Development, Industry Partners, ISDs
- **Review of potential funding sources:** Alamo Colleges Foundation, JPMorgan Chase, Frost, etc.

2019-2020: LAUNCH

- Launch program planning, awareness building, recruitment of first class initial participating high schools
- Target recruitment from Phase 1 economically disadvantaged Bexar County high schools

2020-2021: PHASE 1

- Inaugural cohort AlamoPROMISE Scholars arrives in summer 2020 (Phase 1 schools)
- Summer Bridge & Career Boot Camp implemented
- Target recruitment to remaining Phase 2 Bexar County high schools

2021-2022: PHASE 2

- Second cohort of Promise Scholars arrive in summer 2021 (Phase 2 schools)
- Ongoing recruitment from all participating Bexar County high schools



Next Steps: 3-month outlook

JULY

**Presentation to
Alamo Colleges
Board of
Trustees.**

Program formally
proposed, approved.

AUGUST

**Ongoing
Development.**

Budget conversation
presentations &
technical assistance
with Dallas Commit.

October

Formal Launch.

Program launches
and Phase 1
recruitment begins.





Thank you

alamo.edu/promise

**for your commitment to education and
workforce development.**



ALAMO
COLLEGES
DISTRICT