

City of San Antonio  
Comprehensive Domestic Violence Plan

LOVE IS...

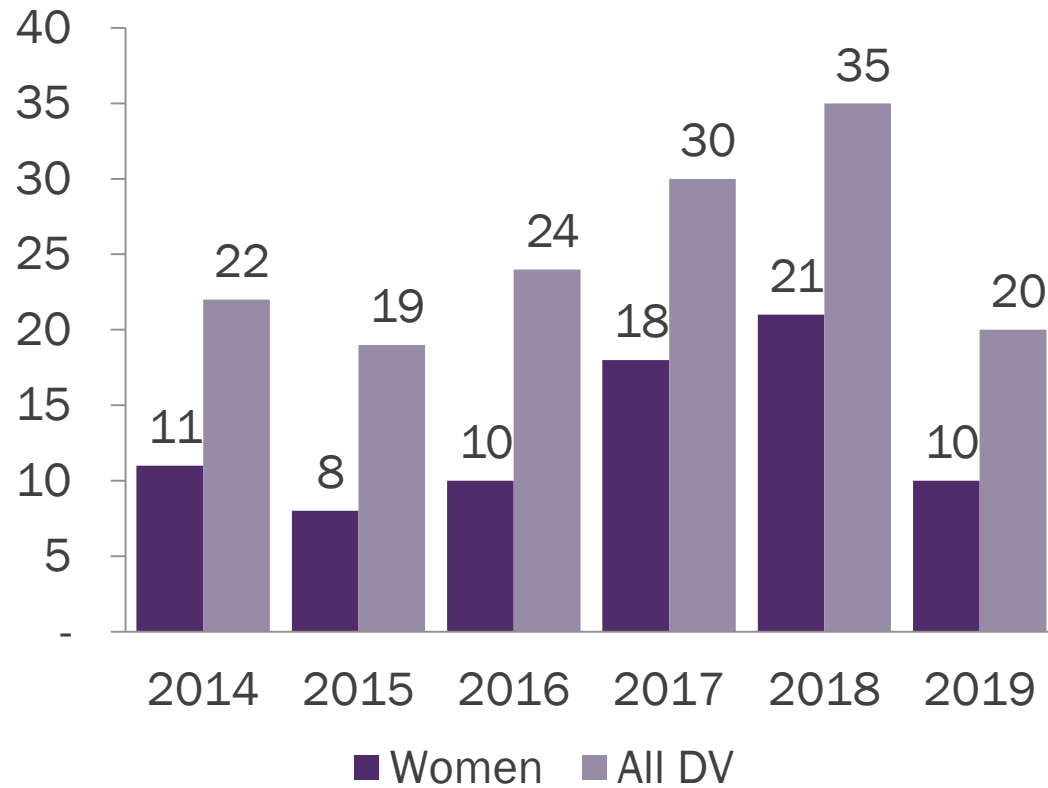


# Is domestic violence increasing?

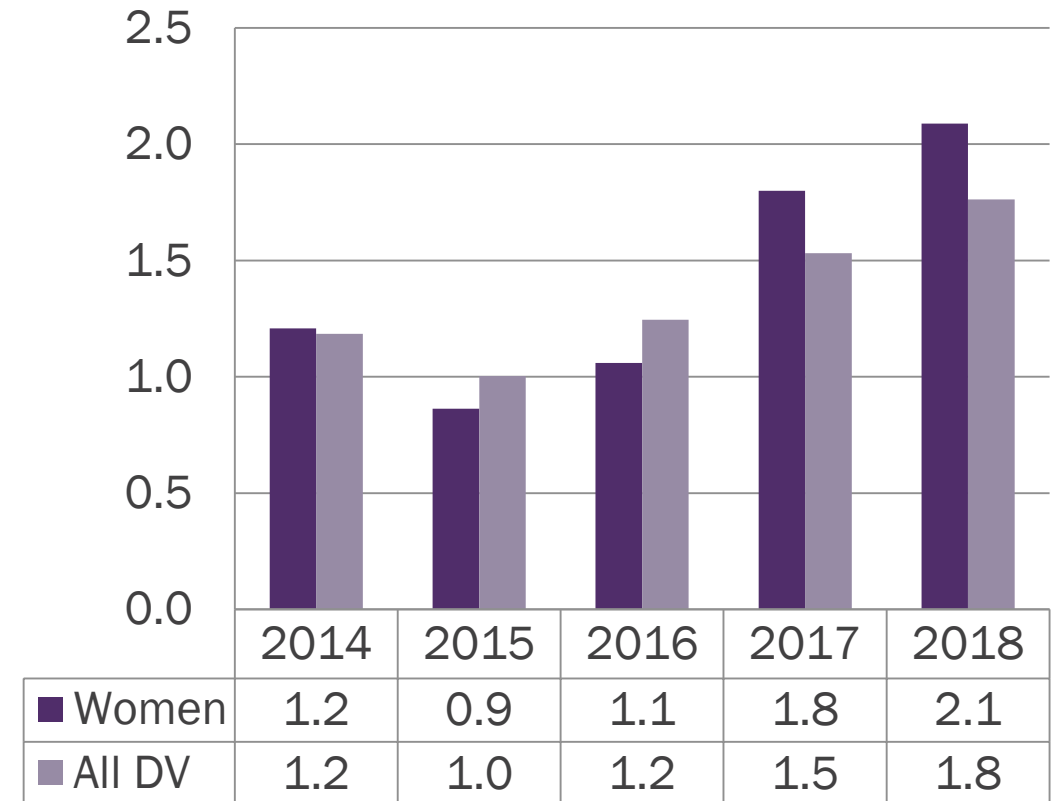


## Domestic Violence Related Homicides

### Number of Homicides



### Rate of Homicide

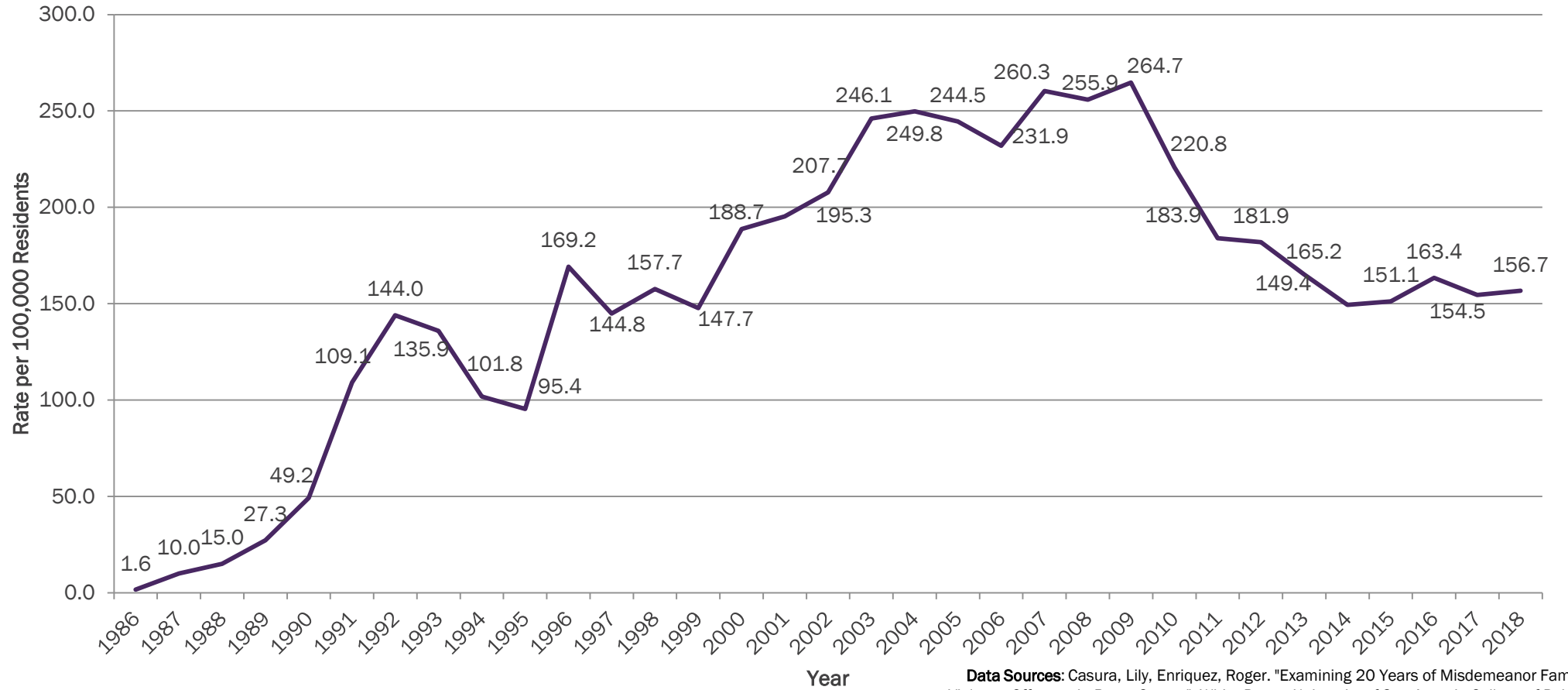


Source: SAPD and BCSO

# Misdemeanor Offenses Family Violence



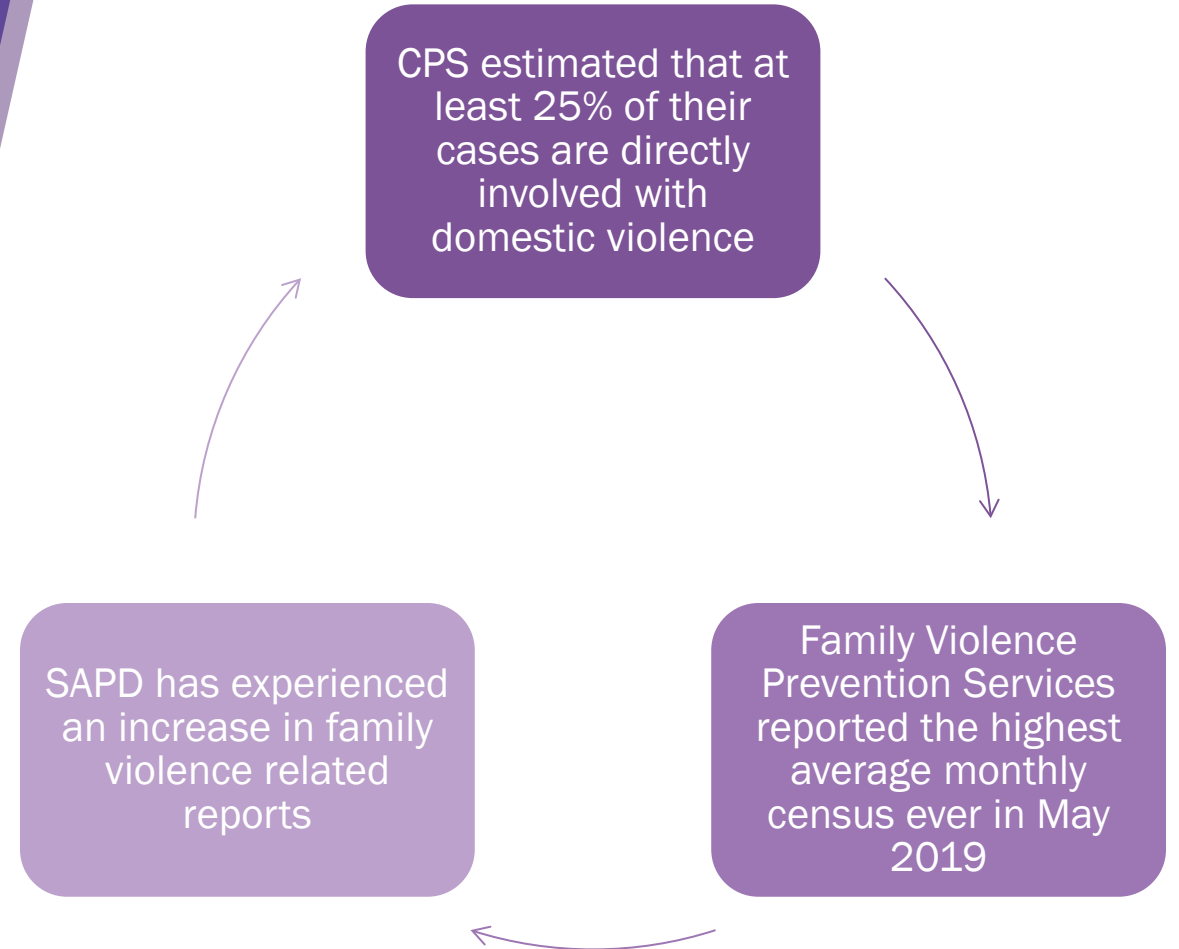
Year	Cases
1986	19
1987	118
1988	177
1989	322
1990	584
1991	1,316
1992	1,770
1993	1,703
1994	1,292
1995	1,232
1996	2,216
1997	1,935
1998	2,136
1999	2,028
2000	2,629
2001	2,771
2002	3,005
2003	3,617
2004	3,749
2005	3,739
2006	3,650
2007	4,205
2008	4,226
2009	4,462
2010	3,787
2011	3,228
2012	3,253
2013	3,008
2014	2,776
2015	2,864
2016	3,150
2017	3,026
2018	3,112



Graph produced by the Informatics Division, SAMHD

Data Sources: Casura, Lily, Enriquez, Roger. "Examining 20 Years of Misdemeanor Family Violence Offenses in Bexar County". White Paper. University of San Antonio College of Public Policy, 25 September, 2019. U.S. Census County Intercensal Tables: 1980-1989, 1990-1999,

## What else do we know?



# Is domestic violence increasing?



- Both the **number** and the **rate** of domestic violence related homicides are increasing.
- Other indicators are not as clear.
  - Family Violence Calls to SAPD have been stable
  - Felony Family Violence Arrests have increased 6% a year from 2014 – 2018

The New York Times

## *Murders by Intimate Partners Are on the Rise, Study Finds*



Representative Debbie Dingell, Democrat of Michigan, speaking about the Violence Against Women Act on Capitol Hill last week. Homicides by intimate partners are rising after four decades of decline, a recent study has shown.

Erin Schaff/The New York Times



A Public Health Approach

---

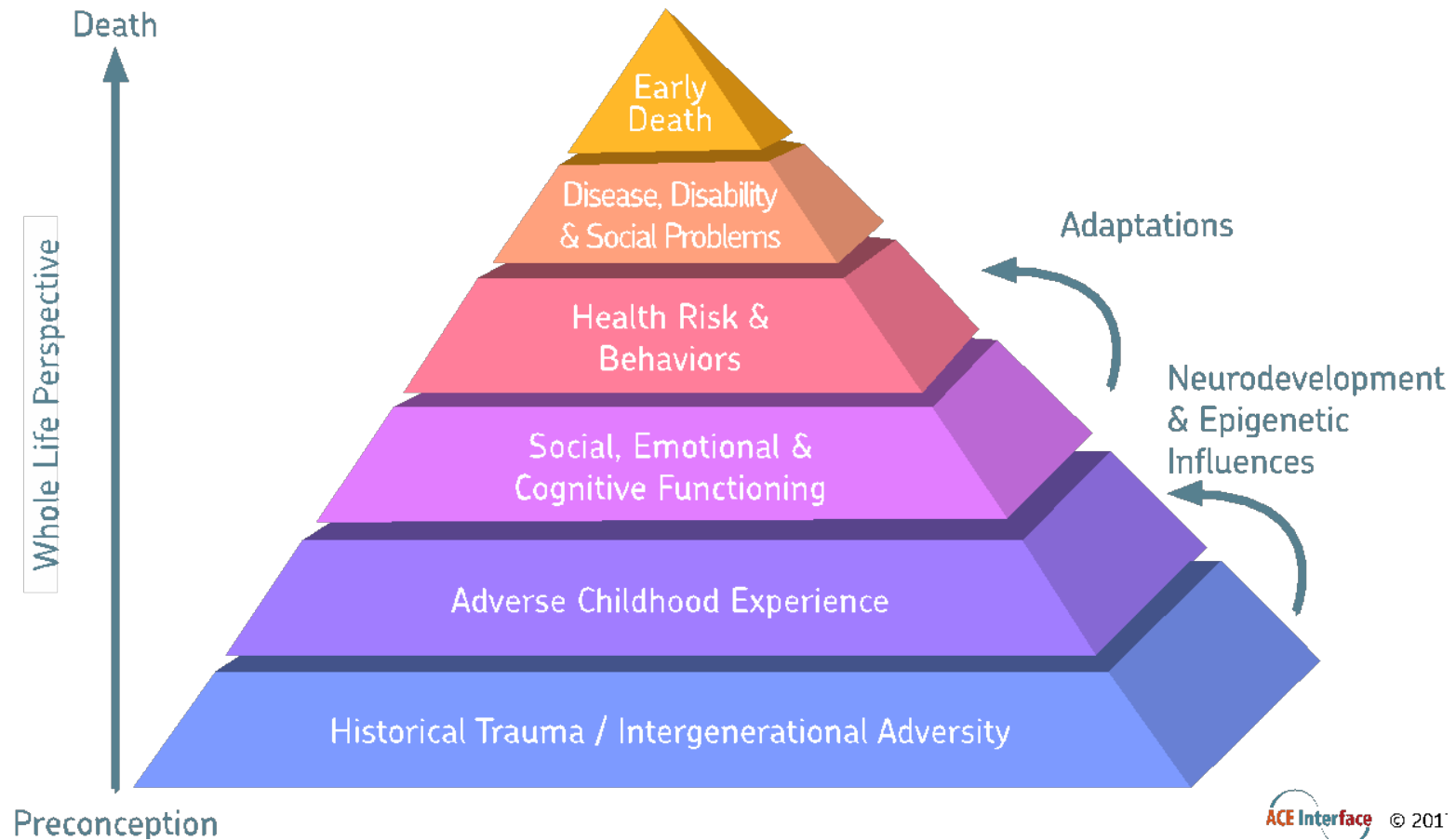
# Prevention of Violence

# What is a public health approach?

---



# Life course Theory of Prevention







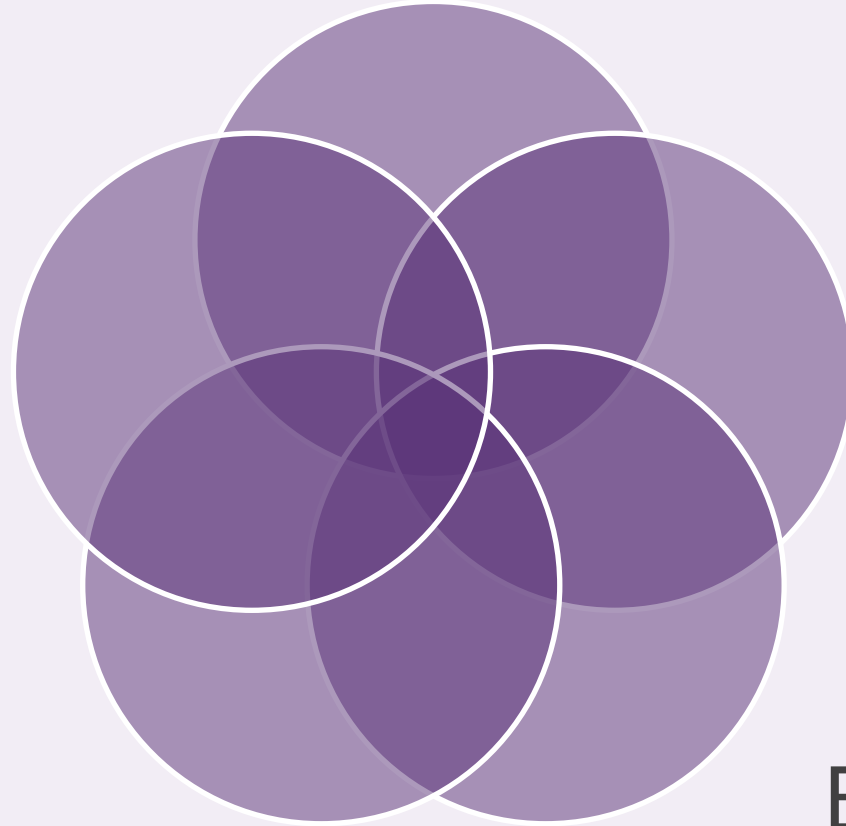
Child Abuse

Suicide

Domestic  
Violence

Gun  
Violence

Elder Abuse





**What do we need to know to take  
action?**



# Data Availability



Many of the indicators swing widely from year to year



Concerns with the quality and definitions of data



Most of available data is from law enforcement

# Assessment Data Sources



# Townhall Survey Results



Removing weapons from the home of domestic violence abusers



Teen and youth dating violence prevention programs



Training for police officers on domestic violence response



Increasing the number of legal advocates to support survivors through the court process



Parent education programs that prevent child abuse



Communication campaigns about where to seek help for domestic violence



Training for healthcare providers to identify and support survivors of domestic violence



Community  
Norms

Perceived  
Importance

Complexity of  
Work

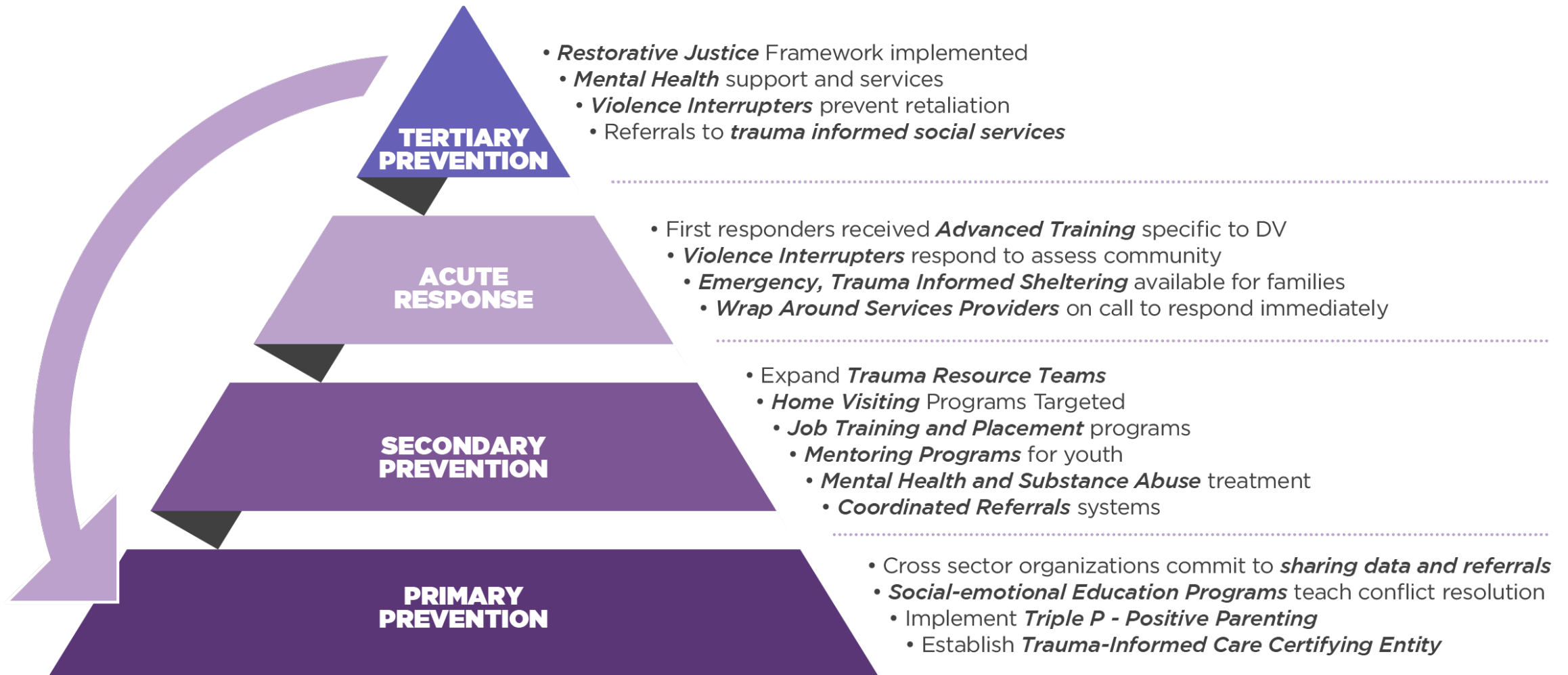
Specialized  
Populations

Lack of  
Coordination

Transparency  
of Process  
and Outcomes

## Community Interviews

# City of San Antonio Domestic Violence Prevention Framework





## Primary

- Child, youth & family prevention programs are insufficient to meet community needs.
- Community norms nurture domestic violence and the community is generally unaware of services.
- Populations uniquely vulnerable to experiencing domestic violence require additional specialized outreach.

## Secondary

- Resources and evaluation are not coordinated between agencies and sectors.

## Acute

- Evidence based tools to identify survivors with a high risk of death or serious injury are inconsistently implemented.
- Services for survivors of domestic violence are scattered and entry points are unclear.

## Tertiary

- Housing and legal services are stretched and need additional capacity.
- Services and accountability for offenders do not sufficiently remove weapons and provide treatment to break the cycle of violence.





**Commission on Collaborative Strategies to Prevent,  
Combat and Respond to Domestic Violence**

*Chairs: Judge Monique Diaz and  
Dr. Colleen Bridger*

Comprehensive Domestic Violence Plan

Stakeholder Subcommittees

Nonprofit  
Coordination/  
San Antonio & Bexar  
County Domestic  
Violence Task Force

Law  
Enforcement

Healthcare

Prosecution

Judiciary

Policy Workgroup



## Healthcare

- Communication Campaign
- Referral System



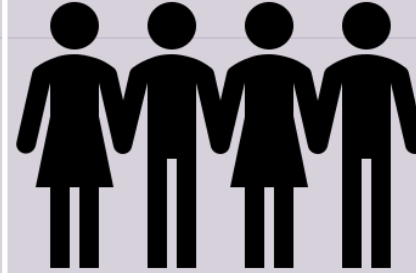
## Judicial

- Pro Bono Representation
- Firearm Surrender Enforcement



## Law Enforcement

- Domestic Violence High Risk Team



## Non-Profit

- School Based Education
- Pro Bono Access

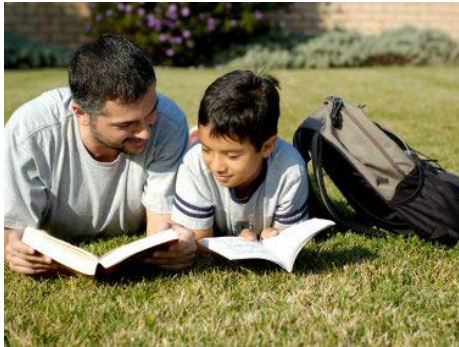


## Prosecution

- Praxis International Blueprint Analysis



# COSA Immediate Actions



**Triple P Parenting Program - \$250,000**  
Parenting education program used in domestic and international contexts. Shown to reduce child abuse.

**School Based Violence Prevention - \$80,000**  
Evidence based social emotional learning program will be implemented in area middle school.



**LOVE IS**

**DV Communications Campaign - \$170,000**  
In collaboration with DHS and SAPD.

**Competitive RFP - \$500,000**  
Support initiatives identified by gap analysis and commission.





## Additional Sources of Support

---

### San Antonio Area Foundation

- \$600,000
- Supports 3 years of Triple P Implementation through Community Partners

### UTHealth

- \$100,000
- Supports Too Good for Violence Implementation in SAISD Schools

### Texas Council on Family Violence

- Due 11/18/19
- Funding for DVHRT Coordinator

### Kronkosky Foundation

- Priority Funding Area (specifically Triple P and ISD Work)

# Project & Solicitation Overview



Human Services seeks proposals from Non-Profit agencies to support a community wide effort to reduce and prevent domestic violence in San Antonio and Bexar County. The complex challenge of reducing domestic violence will require a sustained, coordinated effort, engaging city, county and community resources.

## Solicitation Type

- Request for Proposals (RFP)

## Estimated Value

- \$500,000

## Proposed Term

- Upon Contract approval through September 30, 2021

## Current Contract Status

- New Contract(s)



# RFP Priorities

<b>Referral System</b>	Develop and staff a 24 hour domestic violence/intimate partner crisis hotline to provide trauma-informed assistance and service referrals for domestic violence victims.
<b>Pro Bono Representation</b>	Establish and manage a recruitment and training network to support the increase of pro-bono legal representation related to the cases of domestic violence survivors in criminal and civil proceedings.
<b>DV High Risk Teams</b>	Provide case management and coordination for the CCDV law enforcement committee domestic violence High-Risk Team Pilot Program.
<b>School Based Education</b>	Provide training and technical assistance to Bexar County Independent School Districts in support of implementation of an evidence based teen dating/relationship violence curriculum.
<b>Blueprint for Safety</b>	Provide technical assistance to the Prosecution Committee of the Collaborative Commission on Domestic Violence to implement the criminal justice process assessment tool known as the Praxis International Blueprint for Safety.
<b>Forensic Nurse Examiners</b>	Provide training and assistance to Bexar County hospital systems to support implementation of a domestic violence forensic nurse examiner program.
<b>Lethality Assessments</b>	Provide training and assistance to Bexar County area law enforcement, medical systems and fire departments to support implementation of a CCDV-selected domestic violence lethality/danger assessment.

# Solicitation Overview



Outreach	
NIGP Codes Identified	NIGP code(s) and description 95259 – Human Services (not otherwise classified)
Number of Vendors to be Notified	Central Vendor Registry: 38 Veteran Owned Small Business (VOSB): 219 Targeted Vendor Outreach: 24 non-profit organizations
Advertising	TVSA Channel 21 COSA Bidding Opportunities Website Express News

Evaluation Voting Members
Dr. Colleen Bridger, Assistant City Manager, Office of the City Manager
Melody Woosley, Director, Human Services Department
Richard Keith, Administrator, Human Services Department
Jenny Hixon, Violence Prevention Manager, Metro Health District
1-2 representatives from area universities
San Antonio Police Department Representative

# Solicitation Requirements



## Evaluation Criteria

- Agency Experience, Background, Qualifications: 30 points
- Proposed Program Plan: 45 points
- Funding Budget and Budget Narrative: 25 points

## Additional Requirements

- SBEDA Program: Waived
- Local Preference Program: Not Applicable
- Veteran Owned Small Business Preference Program: Not Applicable
- Audited Financial Statements: Required



# Project Timeline



## Pre-Solicitation

- City Council B-Session  
October 30, 2019
- Release Date:  
November 1, 2019

## Solicitation

- Pre-Submittal Conference:  
November 14, 2019
- Deadline for Questions:  
November 19, 2019
- Due Date:  
December 16, 2019

## Post – Solicitation

- Evaluation Complete  
January 7, 2020
- Contracts Negotiated:  
January 2020
- Post Solicitation Briefing:  
January/February 2020

## Finalization

- City Council Consideration:  
February/March 2020
- Contract Start Date:  
March 2020



# Five Year Goals

1

Disrupt  
Developmental  
Pathways  
Toward Partner  
Violence

2

Teach Safe  
And Healthy  
Relationship  
Skills

3

Increase  
Cross-Sector  
Partnerships  
and  
Transparency

4

Coordinate  
and  
Streamline  
Access to  
Services and  
Trauma-  
Informed  
Response  
Systems

5

Support  
Survivors To  
Increase  
Safety and  
Lessen Harms

6

Reduce Access  
to Weapons  
and Increase  
Availability of  
Rehabilitative  
Programs

# Five Year Outcomes



## Year 1

- Establish a baseline for Year 5 outcomes

## Years 2 - 5

- Annual Reports
- Ongoing Evaluation of Initiatives

## Year 5

- Final Outcome Report

LOVE IS...

End of Presentation

