

HISTORIC AND DESIGN REVIEW COMMISSION

May 20, 2020

HDRC CASE NO: 2020-177
ADDRESS: 3903 N ST MARYS ST
COMMON NAME: San Antonio Zoo
ZONING: R-6, Public Property
CITY COUNCIL DIST.: 2
LANDMARK: Individual Landmark
APPLICANT: Jeffrey Watson/Alamo Architects
OWNER: San Antonio Zoo
TYPE OF WORK: Signage and art installation
APPLICATION RECEIVED: May 01, 2020
60-DAY REVIEW: Not applicable due to City Council Emergency Measures
CASE MANAGER: Edward Hall

REQUEST:

The applicant is requesting a Certificate of Appropriateness for approval to install signage and art at the parking garage located at the San Antonio Zoo. Within this request, the applicant has proposed the following:

1. Install one (1) aluminum, reverse lit channel letter sign to be located on the south façade of the parking structure. The proposed signage will feature an overall length of 41' – 0" and an overall height of 3' – 0" for a total size of 123 Square feet. The proposed signage will read "Brackenridge Park".
2. Install one (1) aluminum, reverse lit channel letter sign to be located on the south façade of the parking structure at the pedestrian level. The proposed signage will feature an overall length of 21' – 8" and an overall height of 1' – 8" for a total size of approximately 37 square feet. The proposed signage will read "Brackenridge Park".
3. Install one (1) aluminum, reverse lit channel letter sign to be located on the south façade of the parking structure. The proposed signage will feature an overall length of 28' – 6" and an overall height of 14' – 0" for a total size of approximately 399 square feet. The proposed signage will read "San Antonio Zoo".
4. Install one (1) aluminum, reverse lit channel letter sign to be located on the east façade of the parking structure. The proposed signage will feature an overall length of 19' – 0" and an overall height of 9' – 6" for a total size of approximately 181 square feet. The proposed signage will read "San Antonio Zoo".
5. Install a number of graphics on the facades of the parking structure including a tiger, four butterflies, and two giraffes.

This property is public property, but is not located within the boundaries of the Brackenridge Park National Register of Historic Places District, nor is it located within a local historic district or the River Improvement Overlay.

APPLICABLE CITATIONS:

Sec. 35-645. - Signs and Billboards on Public Property or Right-of-Way.

(a)General Provisions. All non-regulatory signage on public property, on the public right-of-way, or overhanging the public right-of-way shall conform to all city codes and must be approved by the historic preservation officer prior to installation. Permits must be obtained following approval of the application. The historic preservation officer may submit an application under this section to the historic and design review commission for their recommendation prior to approving, denying, or approving with conditions the application. Memorials, markers, naming rights of public property, and recognition of charitable donations given to the City of San Antonio shall be additionally governed by existing policies for memorials and markers and/or any formal action passed by city council. Temporary displays approved by the department exercising control of the public property are authorized if in accordance with chapter 28 of the City Code of San Antonio, Texas.

(b)Sign Definitions. For signage definitions, refer to subsection 35-612(b) and chapter 28 of the City Code.

(c)Proportion of Signs. Signage width and height must be in proportion to the facade, respecting the size, scale and mass of the facade, building height, and rhythms and sizes of window and door openings. The building facade shall be considered as part of an overall sign program but the sign shall be subordinate to the overall building composition. Additionally, signs should respect and respond to the character and/or period of the area in which they are being placed.

(d)Standards for Sign Design and Placement. In considering whether to recommend approval or disapproval of an application for a certificate to construct or alter signage on a building, object, site, or structure, the historic and design review commission shall be guided by the following standards in addition to any specific design guidelines adopted by city council:

(1)Primary sign design considerations shall be identification and legibility. Size, scale, height, color and location of signs shall be harmonious with, and properly related to, the overall design of the building or structure and the surrounding area.

(2)The number of signs on each building shall be kept to a minimum to prevent unsightly clutter and confusion.

(3)Signs which describe, point, or direct the reader to a specific place or along a specific course, such as "entrance," "exit," and "handicap access" shall be reviewed.

(4)All graphic elements shall reinforce the architectural integrity of any building. Signs should not disfigure, damage, mar, alter, or conceal architectural features or details and should be limited to sizes which are in scale with the architecture and the streetscape. The historic and design review commission shall be guided by the building's proportion and scale when such elements are incorporated.

(5)Additionally, when reviewing applications for signage the historic preservation officer and the historic and design review commission shall consider the visual impact on nearby historic resources and established neighborhood character.

FINDINGS:

- a. The applicant is requesting a Certificate of Appropriateness for approval to install signage and art at the parking garage located at the San Antonio Zoo. This request includes both identification signage for Brackenridge Park and the San Antonio Zoo. This property is public property, but is not located within the boundaries of the Brackenridge Park National Register of Historic Places District, nor is it located within a local historic district or the River Improvement Overlay.
- b. SIGNAGE – The applicant has proposed a total of four signs to be wall mounted, constructed of aluminum and to be reverse lit. Staff finds the proposed signs to be appropriate and consistent with the Unified Development Code Section 35-645.
- c. GRAPHICS – The applicant has proposed graphics that include a tiger, butterflies, and giraffes. Staff finds the proposed installation to be appropriate.

RECOMMENDATION:

Staff recommends approval as submitted based on findings a through c.

Project:

San Antonio Zoo Parking Garage
Alamo Architects Job No: 2018-27

Subject:

HDRC Final Approval – Building Signage / Artwork - Submission 2020-05-01 - Hearing 2020-05-20

We are seeking approval for the design of new building signage and graphics intended to be applied to the newly constructed San Antonio Zoo Parking Garage. This new work is to occur on the South and East facades of the Garage, mounting on the precast structure and aluminum frame as needed.

There is a total of 4 building signs including a pair of Brackenridge Park signs and a pair of San Antonio Zoo signs.

Brackenridge Park Signs

The first Brackenridge Park sign will be mounted to the precast concrete structure and in front of the existing green screen trellage system. All signs will be reverse aluminum channel lettering with halo. The second of the Brackenridge signs will be mounted on standoffs from the modular landscape block wall near the East Stair / Elevator tower on the South facade.

San Antonio Zoo Signs

The San Antonio Zoo sign located on the South will be mounted in a similar fashion to the Brackenridge Park sign mounted in front of the green screen. The second is located on the East elevation of the elevator/stair tower and will be mounted with standoffs directly to the precast panel.

Graphics

The graphics to be included on the façades of the building are as follows. There will be a large Tiger measuring approximately (80) eighty feet in length and (36) thirty-six feet tall on the south façade towards the west of the building, mounted in front of the existing green screen structure. In addition to the tiger, four butterflies of varying size will surround the large San Antonio Zoo sign on the south façade in front of the green screen. A single giraffe that is roughly (23) twenty-three feet wide and (52) fifty-two feet tall will be installed along the perforated panel section on the south elevation of the existing stair / elevator tower. Finally, a second giraffe piece will be installed on the East façade, directly against the precast wall panels of the elevator / stair tower. All of these graphics are intended to be constructed from solid 1/8" aluminum panels, cut to shape and the graphics with a powder coated finish. The only exception being the butterflies which will be constructed of plate steel, thickness as required for structural rigidity (1/4" anticipated), cut to shape, and powder coated.



In association with:



Alamo
ARCHITECTS

SAN ANTONIO
ZOO

San Antonio Zoo Parking Garage

Historic Design Review Commission - Final Approval - Signage / Artwork

May 20th, 2020



Site Location

Scale: NTS



In association with:





In association with:



Alamo
ARCHITECTS



San Antonio Zoo Parking Garage

Historic Design Review Commission - Final Approval - Signage / Artwork

May 20th, 2020

Existing Conditions - Tuleta Approach

Scale: NTS



In association with:



Alamo
ARCHITECTS



San Antonio Zoo Parking Garage
Historic Design Review Commission - Final Approval - Signage / Artwork
May 20th, 2020

**Existing Conditions - Proposed Tiger
Location / Brackenridge Park Signage**

Scale: NTS



In association with:



Alamo
ARCHITECTS

SAN ANTONIO
ZOO

San Antonio Zoo Parking Garage

Historic Design Review Commission - Final Approval - Signage / Artwork

May 20th, 2020

**Existing Conditions - Proposed
Butterflies Location / San Antonio Zoo
Signage**

Scale: NTS



In association with:



Alamo
ARCHITECTS



San Antonio Zoo Parking Garage

Historic Design Review Commission - Final Approval - Signage / Artwork

May 20th, 2020

**Existing Conditions - Brackenridge
Park Signage**

Scale: NTS



In association with:



Alamo
ARCHITECTS



San Antonio Zoo Parking Garage

Historic Design Review Commission - Final Approval - Signage / Artwork

May 20th, 2020

Existing Conditions - Proposed Giraffe
Locations

Scale: NTS



In association with:



Alamo
ARCHITECTS



San Antonio Zoo Parking Garage

Historic Design Review Commission - Final Approval - Signage / Artwork

May 20th, 2020

Overall Rendered Elevation

Artwork & Signage

Scale: NTS



In association with:



Alamo
ARCHITECTS



San Antonio Zoo Parking Garage

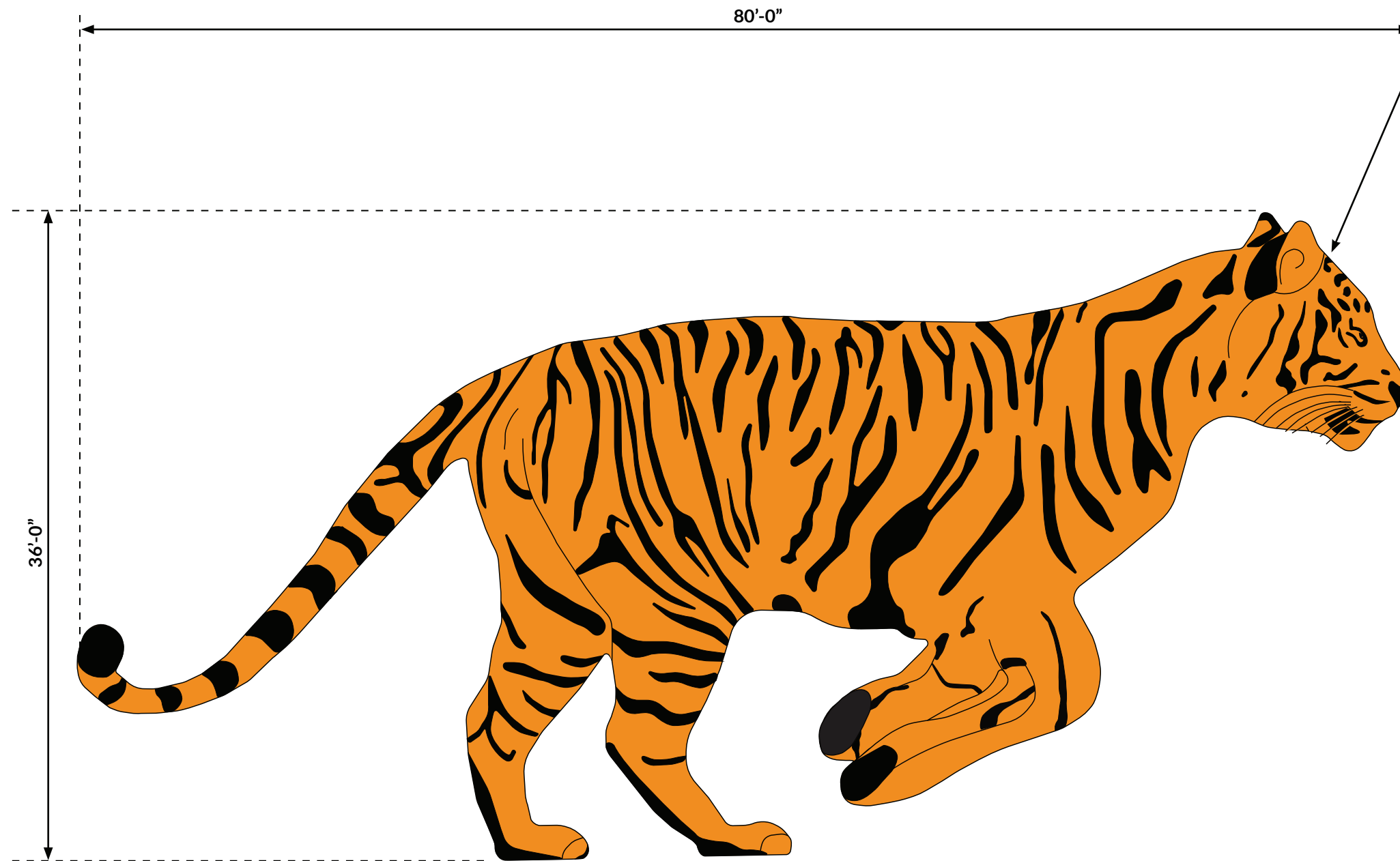
Historic Design Review Commission - Final Approval - Signage / Artwork

May 20th, 2020

Overall Rendered Elevation

Artwork & Signage

Scale: NTS



TIGER ARTWORK - SOUTH FACADE

- SIZE:** APPROXIMATELY "80'-0" x 36'-0"
- MATERIAL:** 1/8" (2) COLOR PAINTED ALUMINUM PLATES ON ALUMINUM STRUCTURAL SUPPORT FRAME
- COLOR:** (2) COLORS
- FIELD - SW-6678 - SUNFLOWER
RGB (*approx. value*)
R - 241
G - 141
B - 7
- SPOTS - SW-6991 - BLACK MAGIC
RGB (*approx. value*)
R - 0
G - 0
B - 0
- STRUCTURE:** ALUMINUM SUB FRAMED MOUNTED TO STEEL EMBEDDED TO PRECAST CONCRETE STRUCTURE
- LIGHTING:** NO ADDITIONAL LIGHTING TO BE INSTALLED EXISTING BUILDING FACADE LIGHTING ONLY
- NOTES:**

In association with:



Alamo
ARCHITECTS



San Antonio Zoo Parking Garage

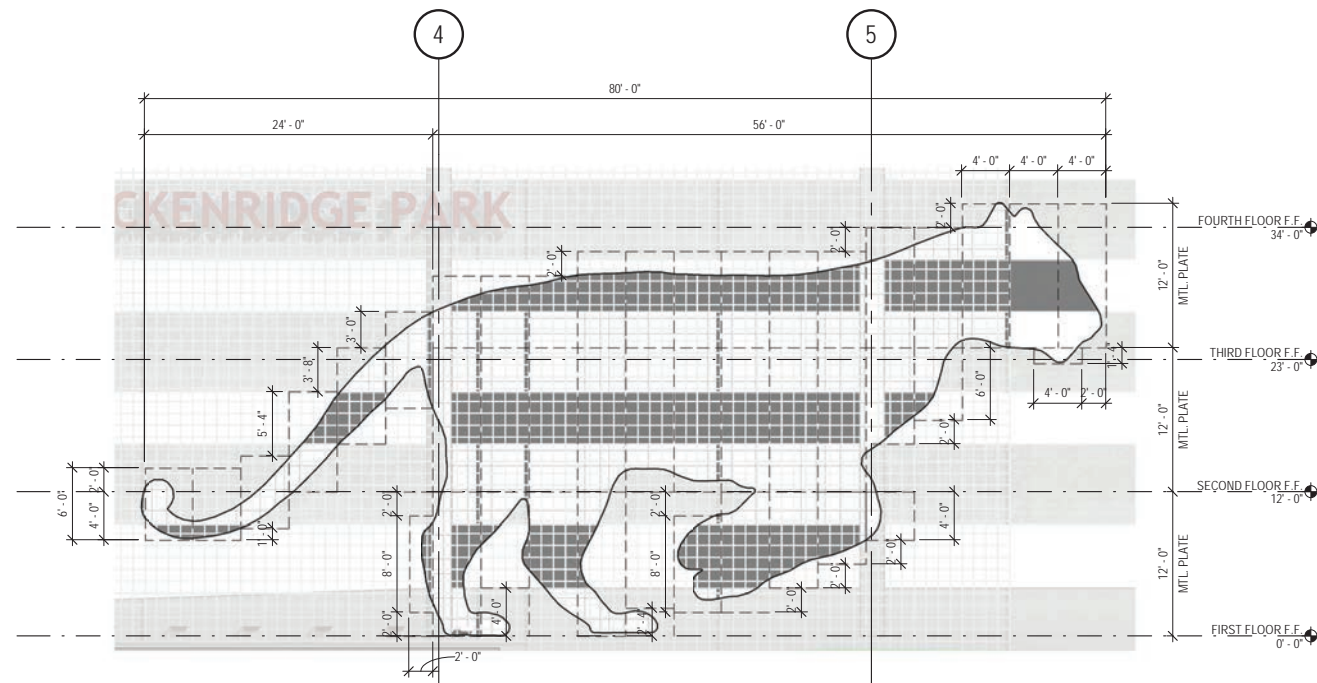
Historic Design Review Commission - Final Approval - Signage / Artwork

May 20th, 2020

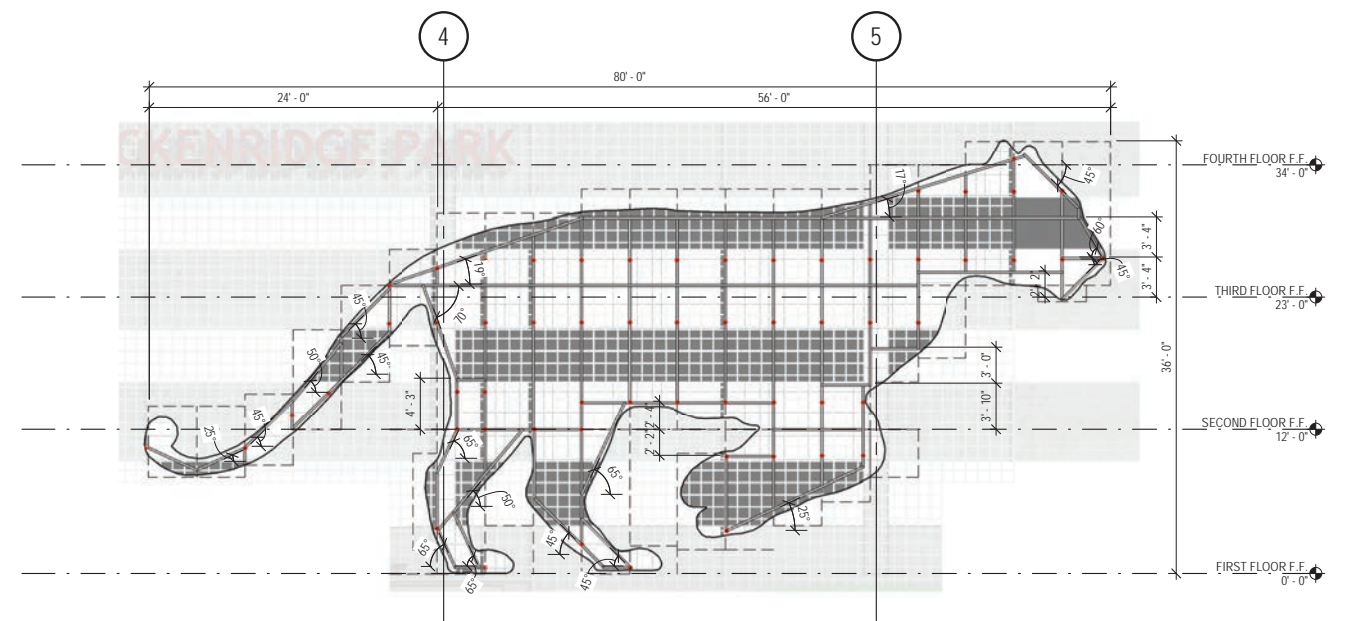
ARTWORK

TIGER

Scale: NTS



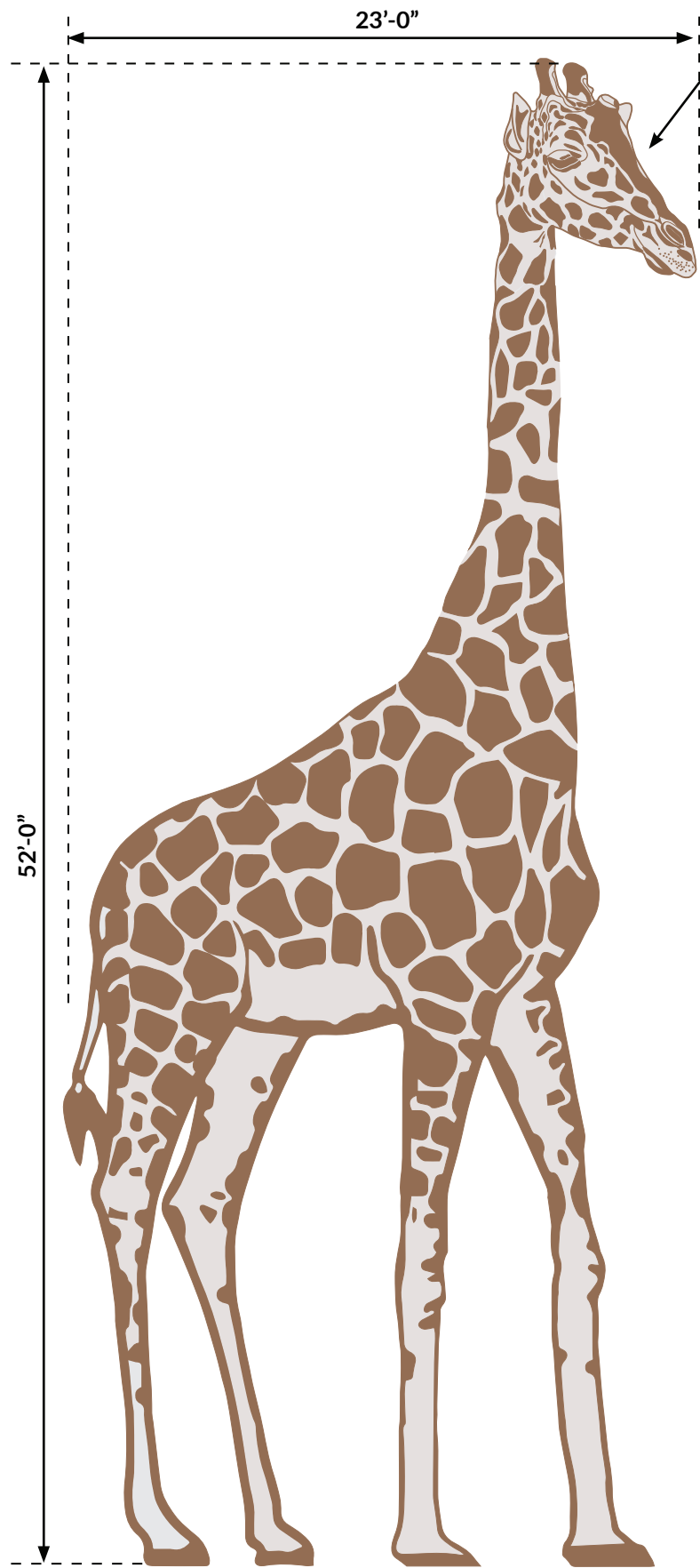
Conceptual Artwork - Tiger Panel Layout
(final layout to be determined by fabricator)



Conceptual Artwork - Tiger Structural Frame Layout
(final layout to be determined by fabricator)

In association with:





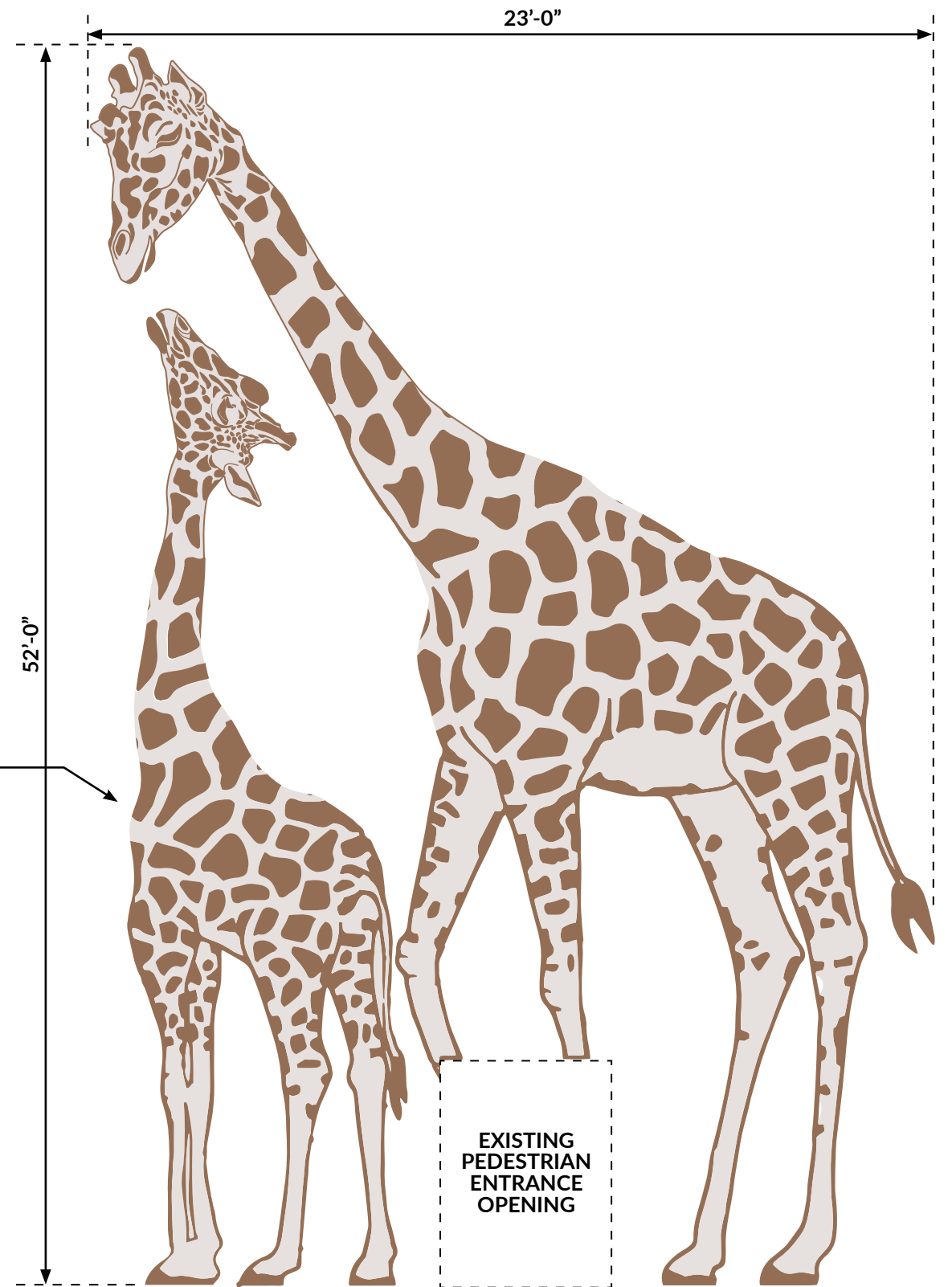
Giraffe - South Facade - Elevator Tower

GIRAFFE ARTWORK - SOUTH FACADE

- SIZE:** APPROXIMATELY "24'-0" x 53'-0"
- MATERIAL:** 1/8" (2) COLOR PAINTED ALUMINUM PLATES ON ALUMINUM STRUCTURAL SUPPORT FRAME
- COLOR:** (2) COLORS
- FIELD - SW-6095 - TOASTY
- RGB (approx. value)
R - 148
G - 110
B - 84
- SPOTS - SW-6014 - QUARTZ WHITE
- RGB (approx. value)
R - 229
G - 223
B - 222
- STRUCTURE:** ALUMINUM SUB FRAME MOUNTED TO STEEL CLIPPED BACK TO EXISTING STRUCTURE AND NEW CONCRETE FOUNDATION.
- LIGHTING:** LANDSCAPE UPLIGHTING TO BE INSTALLED. SEE ATTACHED CUT SHEET
- NOTES:** TO BE INSTALLED IN FRONT OF EXISTING PERFORATED METAL PANEL

GIRAFFE ARTWORK - EAST FACADE

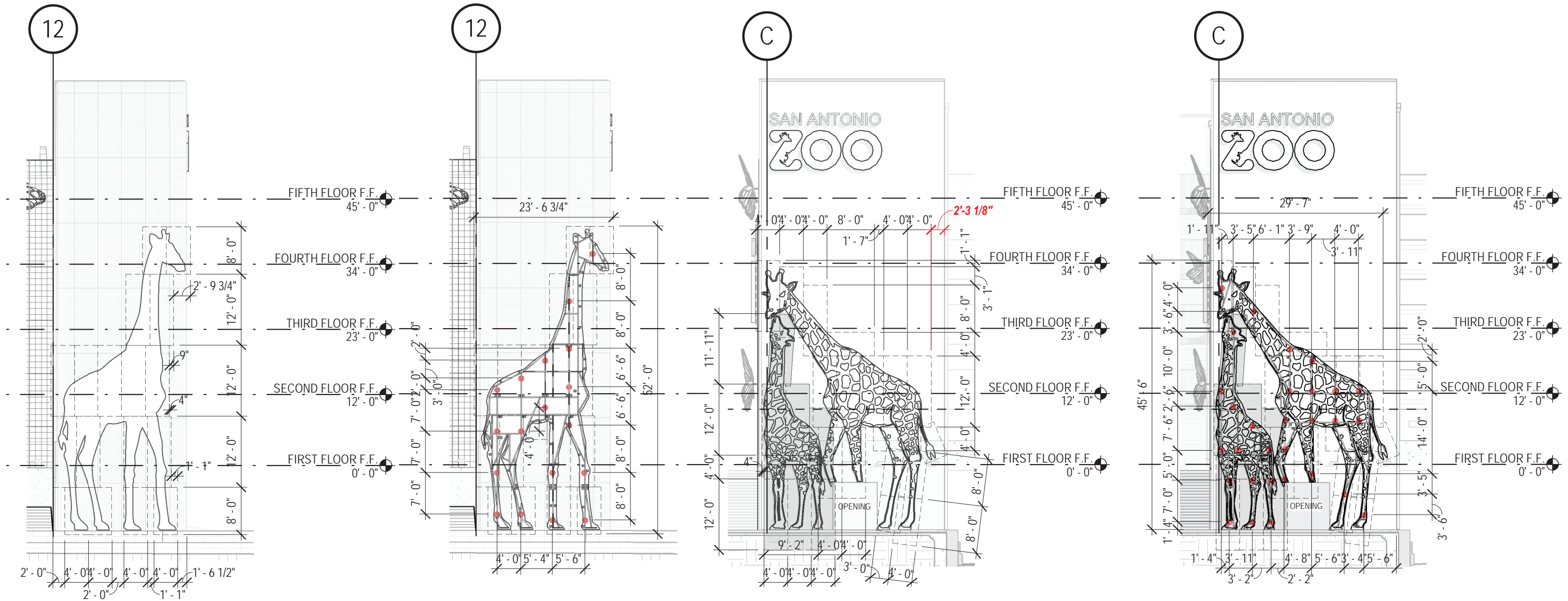
- SIZE:** APPROXIMATELY "24'-0" x 53'-0"
- MATERIAL:** 1/8" (2) COLOR PAINTED ALUMINUM PLATES ON ALUMINUM STRUCTURAL SUPPORT FRAME
- COLOR:** (2) COLORS
- FIELD - SW-6095 - TOASTY
- RGB (approx. value)
R - 148
G - 110
B - 84
- SPOTS - SW-6014 - QUARTZ WHITE
- RGB (approx. value)
R - 229
G - 223
B - 222
- STRUCTURE:** ALUMINUM SUB FRAME MOUNTED TO STEEL STRUCTURE EMBEDDED INTO EXISTING PRECAST STRUCTURE.
- LIGHTING:** NEW POLE MOUNTED LIGHTING TO BE INSTALLED IN LANDSCAPING. SEE ATTACHED CUT SHEET
- NOTES:** NONE



Giraffes - East Facade - Elevator Tower

In association with:





**Conceptual Giraffe - S. Elevation
Panel Layout**

(final layout to be determined by fabricator)

**Conceptual Giraffe - S. Elevation
Structural Frame Layout**

(final layout to be determined by fabricator)

**Conceptual Giraffes - E. Elevation
Panel Layout**

(final layout to be determined by fabricator)

**Conceptual Giraffes - E. Elevation
Structural Frame Layout**

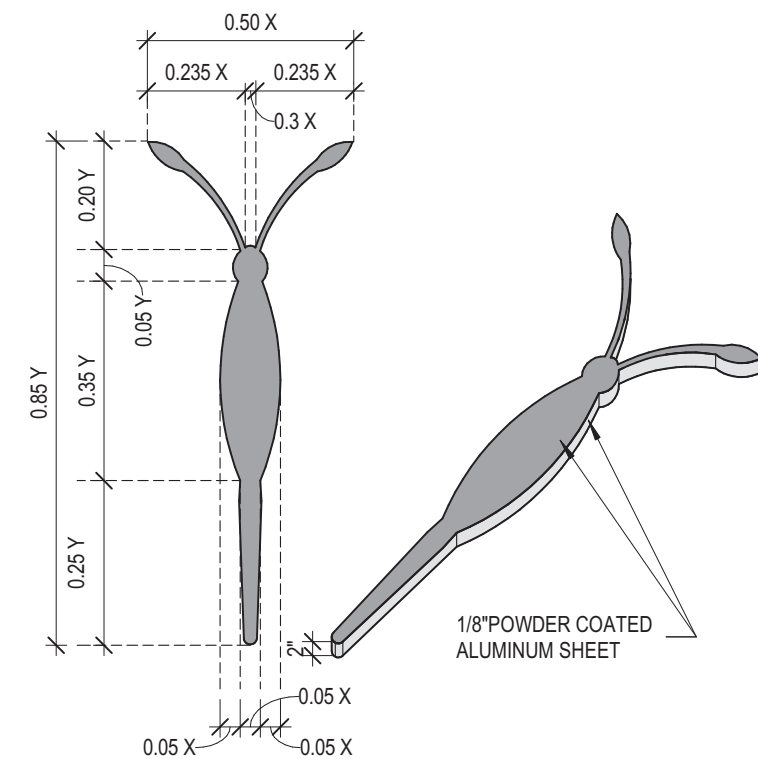
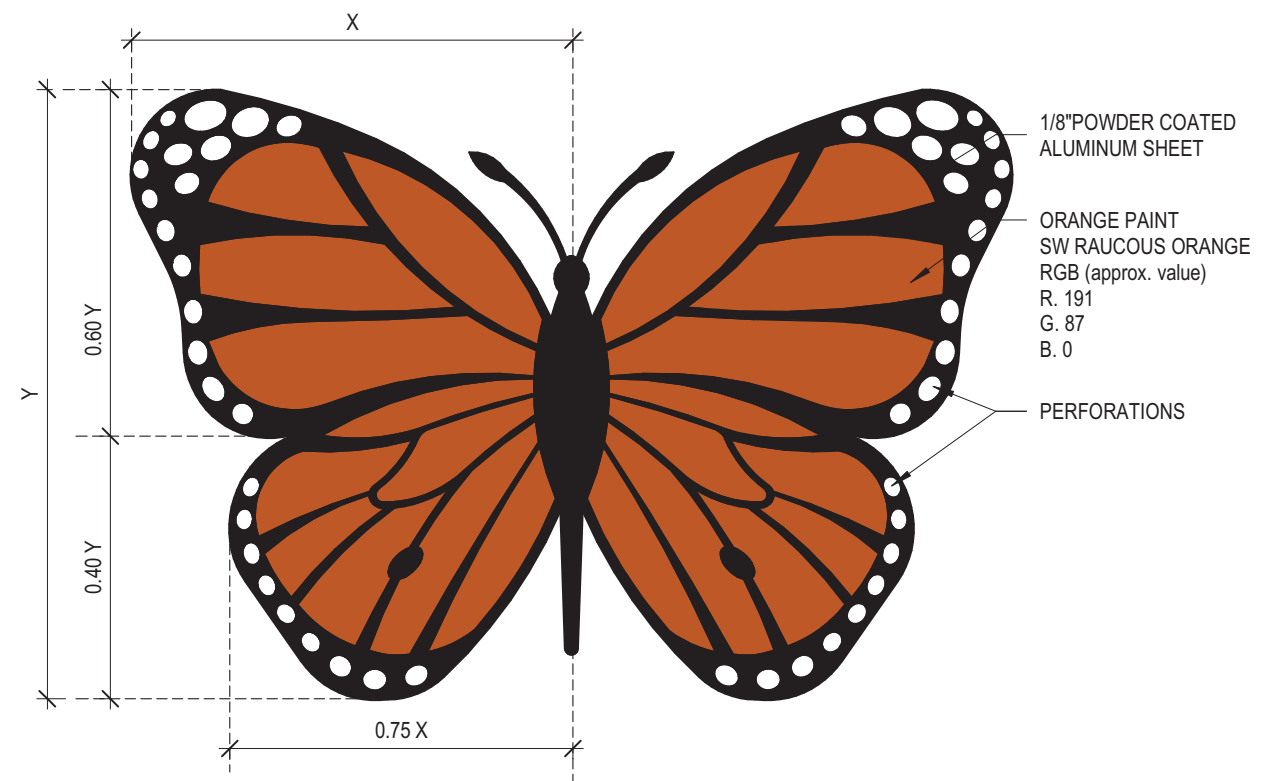
(final layout to be determined by fabricator)

In association with:



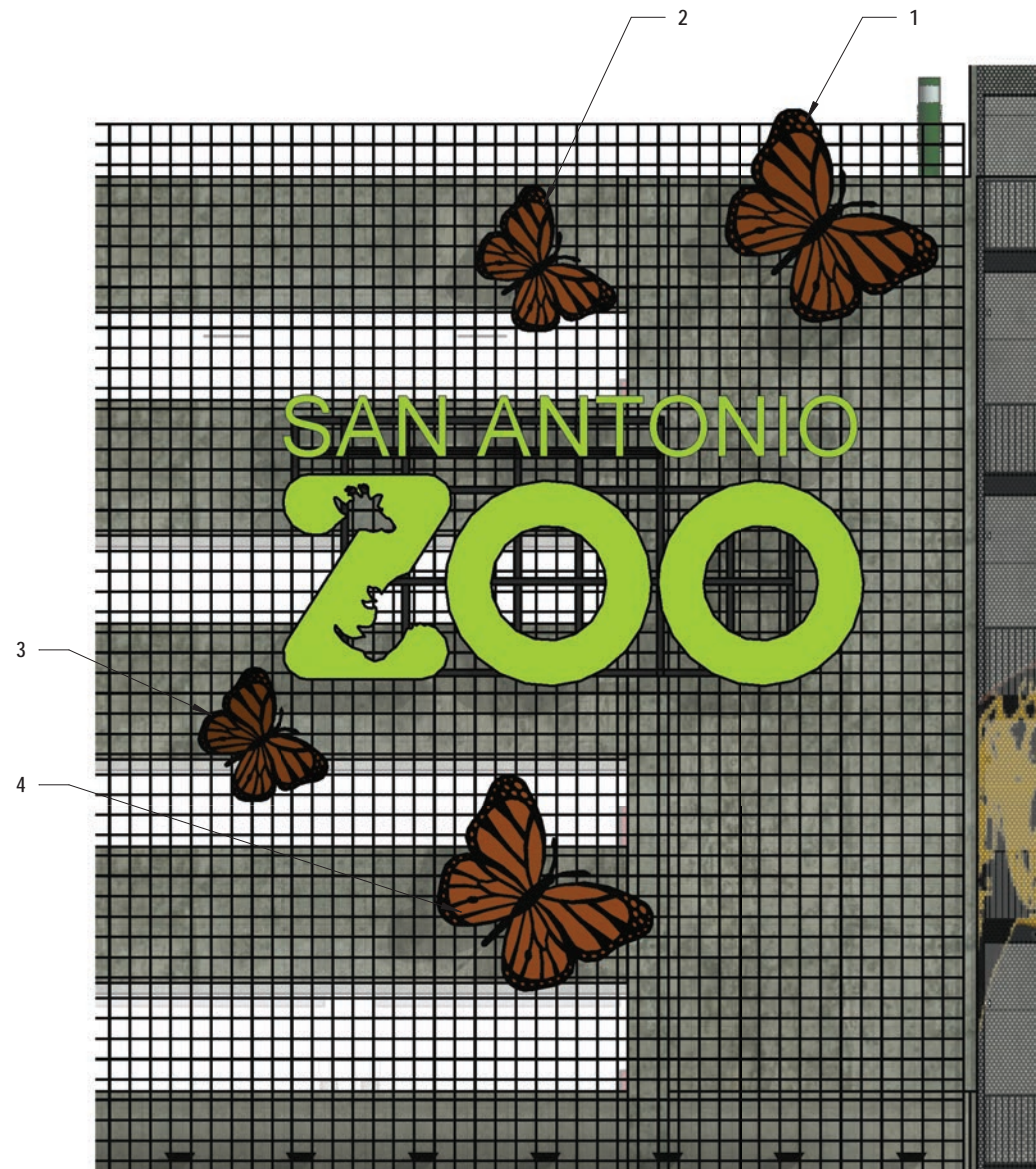


PRECEDENT IMAGES. PAINTED MTL. SHEET BODY AND WINGS



In association with:





MONARCH BUTTERFLIES - SOUTH FACADE

- SIZE:** VARIES, SEE SCHEDULE AND DETAIL FOR APPROXIMATE SIZES
- MATERIAL:** 1/8" - 1/4" (2) COLOR PAINTED MTL. PLATES
- COLOR:** (2) COLORS
- FIELD - SW-6883 - RAUCOUS ORANGE
- RGB (approx. value)
R - 191
G - 87
B - 0
- SPOTS - SW-6991 - BLACK MAGIC
- RGB (approx. value)
R - 0
G - 0
B - 0
- STRUCTURE:** SUB FRAME MOUNTED TO STEEL EMBEDDED TO TO EXISTING PRECAST STRUCTURE
- LIGHTING:** NO ADDITIONAL LIGHTING TO BE INSTALLED

ARTWORK - BUTTERFLIES SIZE AND ANGLES							
BUTTERFLY	V	X	Y	Z	S1	LW	RW
1	45°	5' - 3"	7' - 3"	14°	0' - 10 1/2"	60°	60°
2	35°	3' - 7"	4' - 10"	18°	1' - 0 1/2"	70°	70°
3	35°	3' - 3"	4' - 8"	25°	1' - 1 1/2"	53°	53°
4	45°	5' - 3"	7' - 5 1/2"	1.5°	1' - 3 1/2"	70°	70°





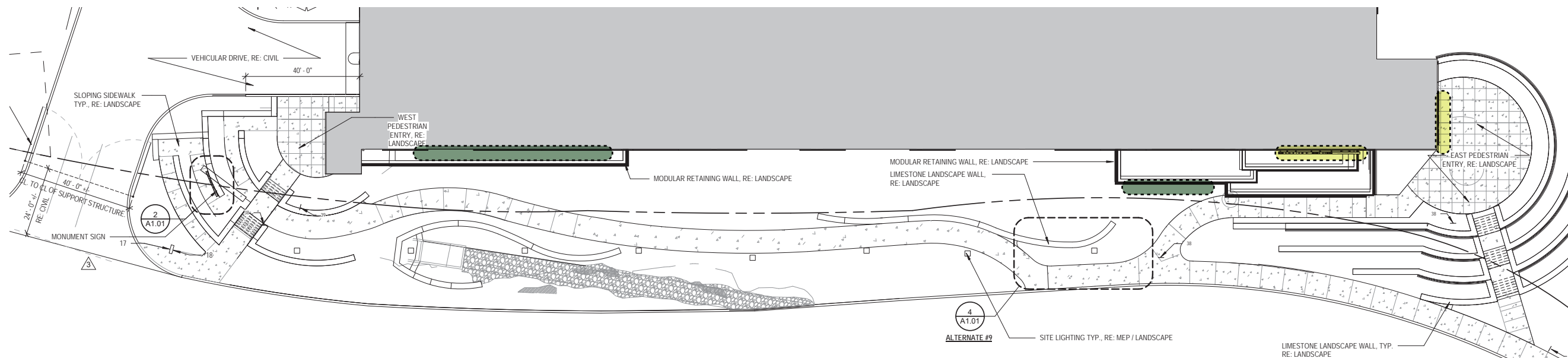
**Existing Material
Precast Concrete Panel**



**Existing Material
Galvanized Trellis Structure**



Lighting Example



Building Signage Proposed Locations - Partial Site Plan

- SAN ANTONIO ZOO SIGN
- BRACKENRIDGE PARK SIGN

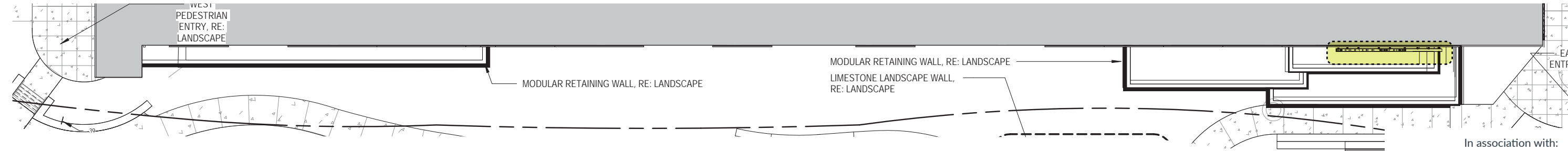
In association with:



“SAN ANTONIO ZOO” - REVERSE CHANNEL LETTERS MOUNTED TO STEEL SUB FRAME MOUNTED TO PRECAST CONCRETE WALL. “ZOO” LETTERS TO MATCH SAN ANTONIO ZOO BRAND FONT, AND COLORS, SIGNAGE ON STAIR TOWER WALL SIMILAR IN DESIGN. REFER TO DETAIL FOR DIMENSIONS



Conceptual San Antonio Zoo Signage



San Antonio Signage Proposed Location - Partial Site Plan





FONT: COMFORTAA BOLD

SAN ANTONIO
ZOO®

SIZE: VARIES, REFER TO DETAIL DRAWINGS

COLOR: SINGLE COLOR
-"ZOO GREEN"



C 59 R 117
M 0 G 192
Y 99 B 68
K 0

HEX #82c657

SAN ANTONIO ZOO SIGN - EAST FACADE

- "SAN ANTONIO ZOO" - REVERSE CHANNEL LETTERS
- MOUNTED TO PRECAST CONCRETE STRUCTURE WITH STAND OFF SPACERS
- "ZOO" LETTERS TO MATCH SAN ANTONIO ZOO BRAND FONT, AND COLORS
- REVERSE HALO LIGHTING
- REFER TO DETAIL FOR SIZES AND ADDITIONAL INFORMATION

SAN ANTONIO ZOO SIGN - SOUTH FACADE

- "SAN ANTONIO ZOO" - REVERSE CHANNEL LETTERS
- MOUNTED TO STEEL SUB FRAME MOUNTED TO PRECAST CONCRETE STRUCTURE
- "ZOO" LETTERS TO MATCH SAN ANTONIO ZOO BRAND FONT, AND COLORS
- REVERSE HALO LIGHTING
- REFER TO DETAIL FOR SIZES AND ADDITIONAL INFORMATION

In association with:



Alamo
ARCHITECTS

SAN ANTONIO
ZOO

San Antonio Zoo Parking Garage

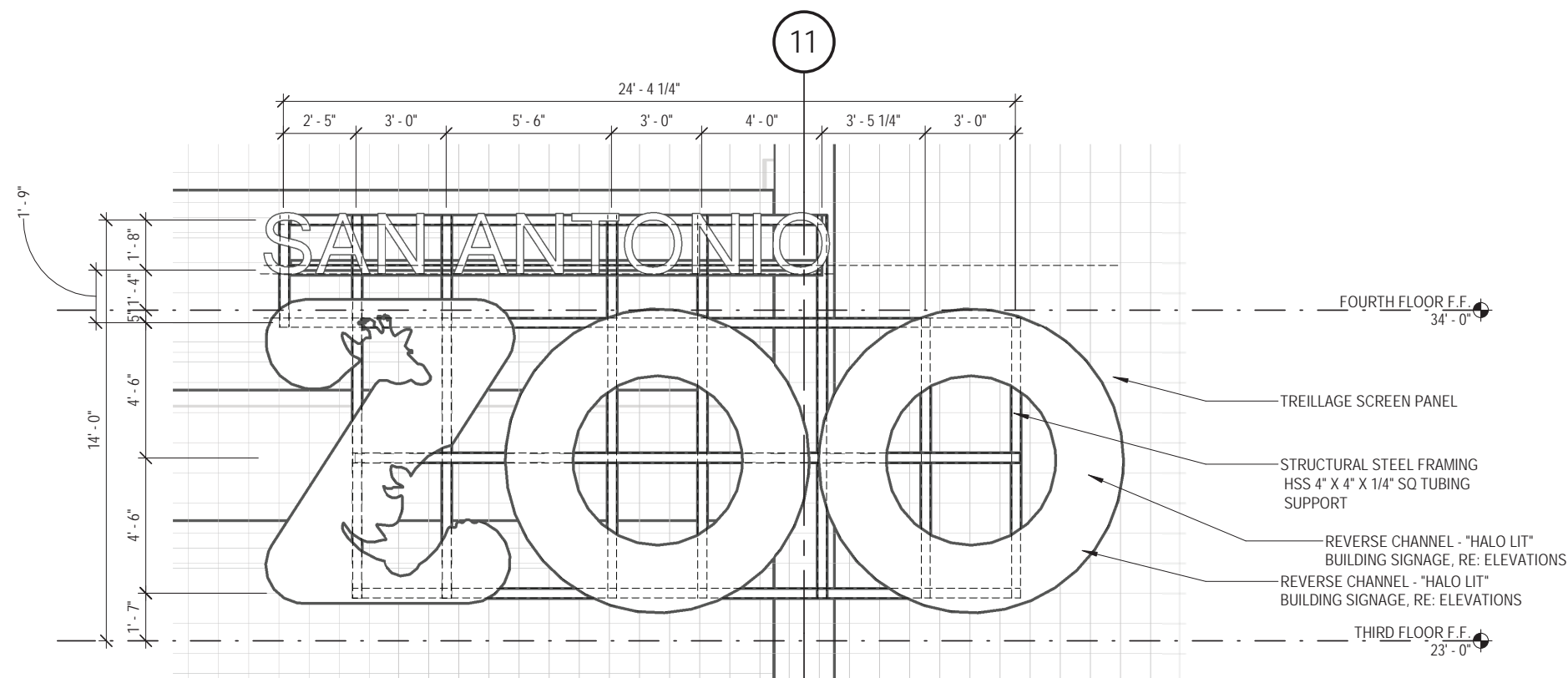
Historic Design Review Commission - Final Approval - Signage / Artwork

May 20th, 2020

BUILDING SIGNAGE

PARTIAL PERSPECTIVE RENDERING & SIGNAGE
SPECIFICATIONS

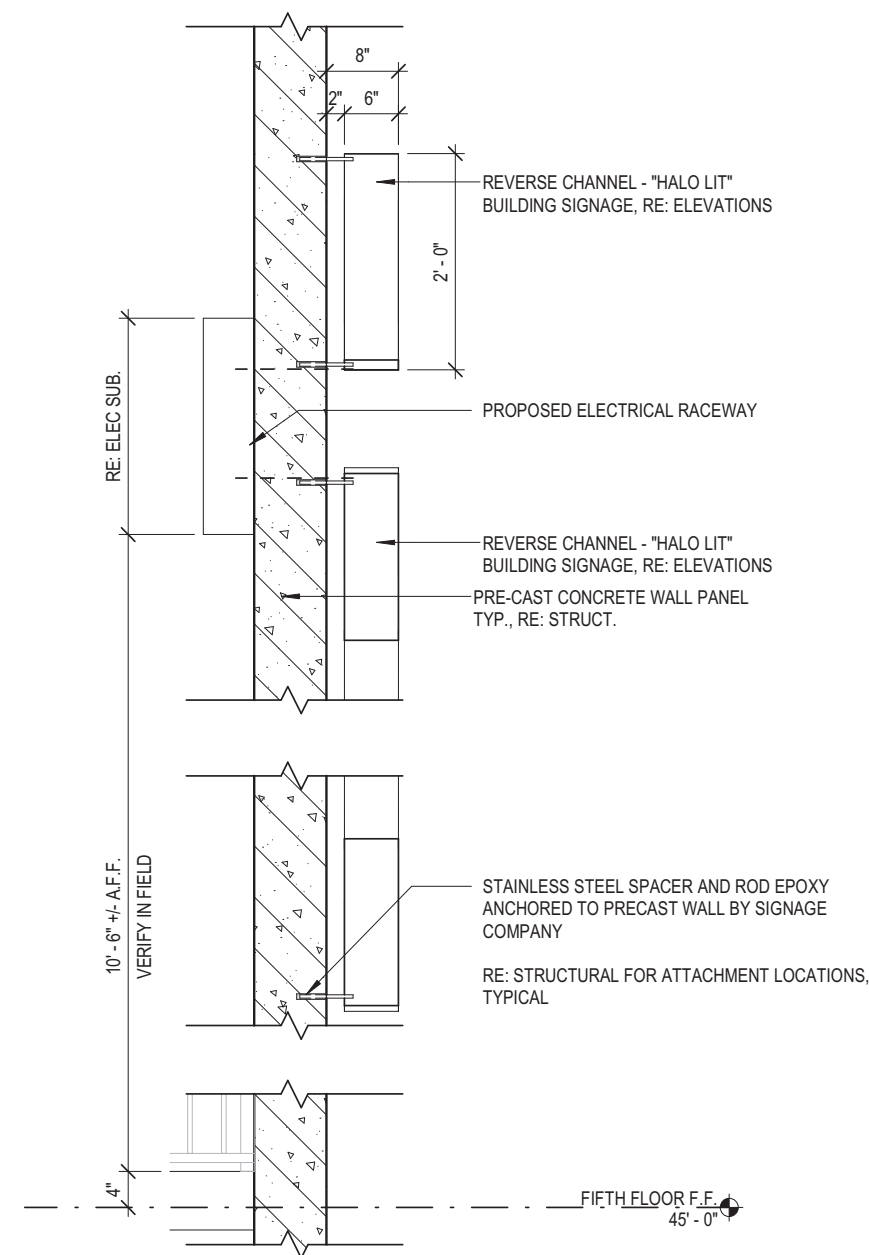
Scale: NTS



Building Signage - San Antonio Zoo sign at Green Screen



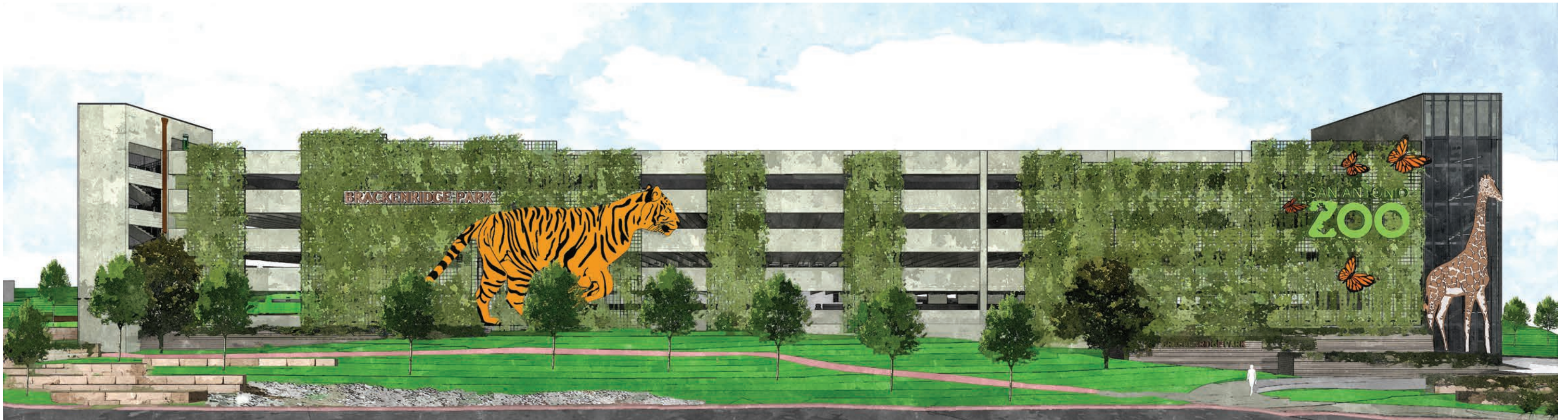
Building Signage - San Antonio Zoo Sign - Precast Wall



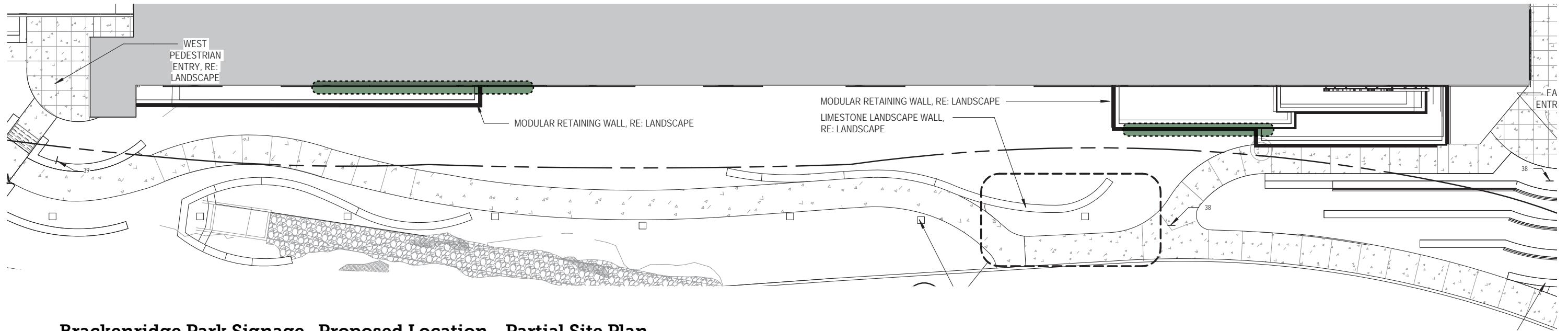
Signage Detail - Precast Wall - San Antonio Zoo Sign

In association with:





Conceptual Brackenridge Park Signage



Brackenridge Park Signage Proposed Location - Partial Site Plan

In association with:



Alamo
ARCHITECTS

SAN ANTONIO
ZOO

San Antonio Zoo Parking Garage

Historic Design Review Commission - Final Approval - Signage / Artwork

May 20th, 2020

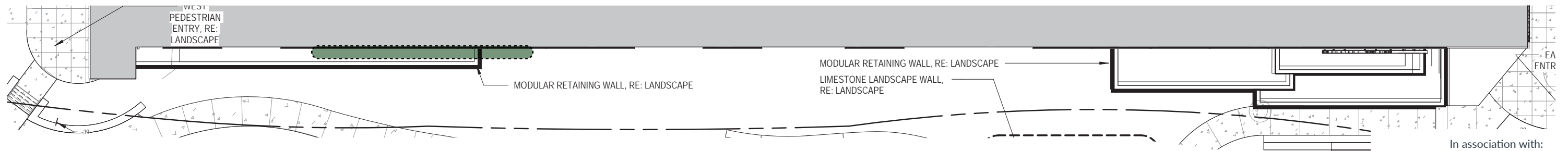
BUILDING SIGNAGE

PARTIAL PLAN & ELEVATION - BRACKEN RIDGE
PARK SIGNAGE

Scale: NTS



Conceptual Brackenridge Park Signage



Brackenridge Park Signage Proposed Location - Partial Site Plan

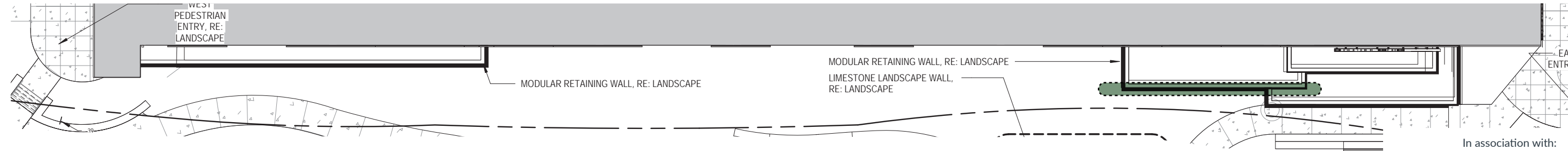
In association with:



“BRACKENRIDGE PARK” - REVERSE CHANNEL LETTERS 1'-8" TALL MOUNTED TO MODULAR RETAINING WALL.



Conceptual Brackenridge Park Signage



Brackenridge Park Signage Proposed Location - Partial Site Plan

In association with:
Guido
CONSTRUCTION

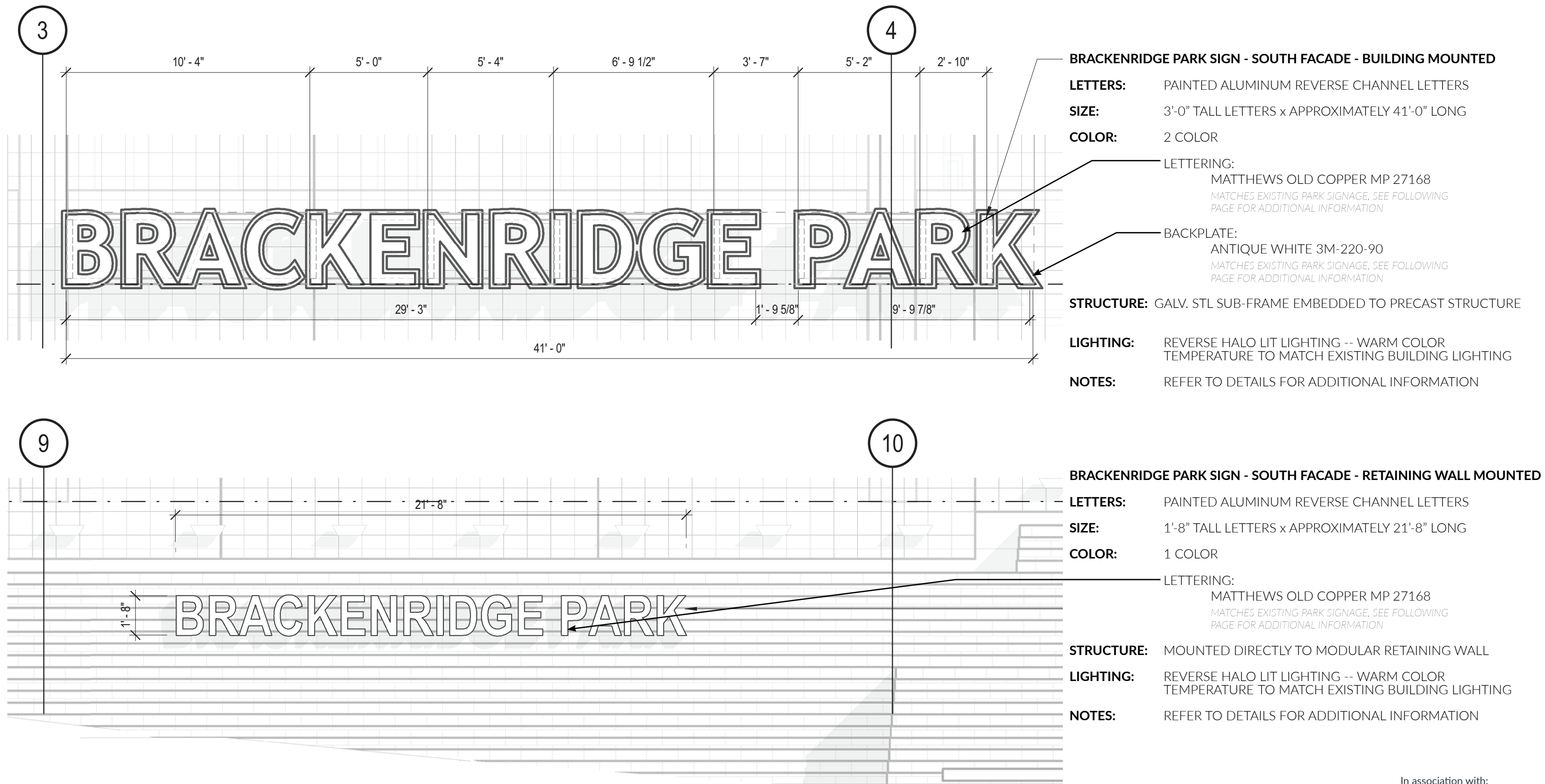
Alamo
ARCHITECTS

SAN ANTONIO
ZOO

San Antonio Zoo Parking Garage
Historic Design Review Commission - Final Approval - Signage / Artwork
May 20th, 2020

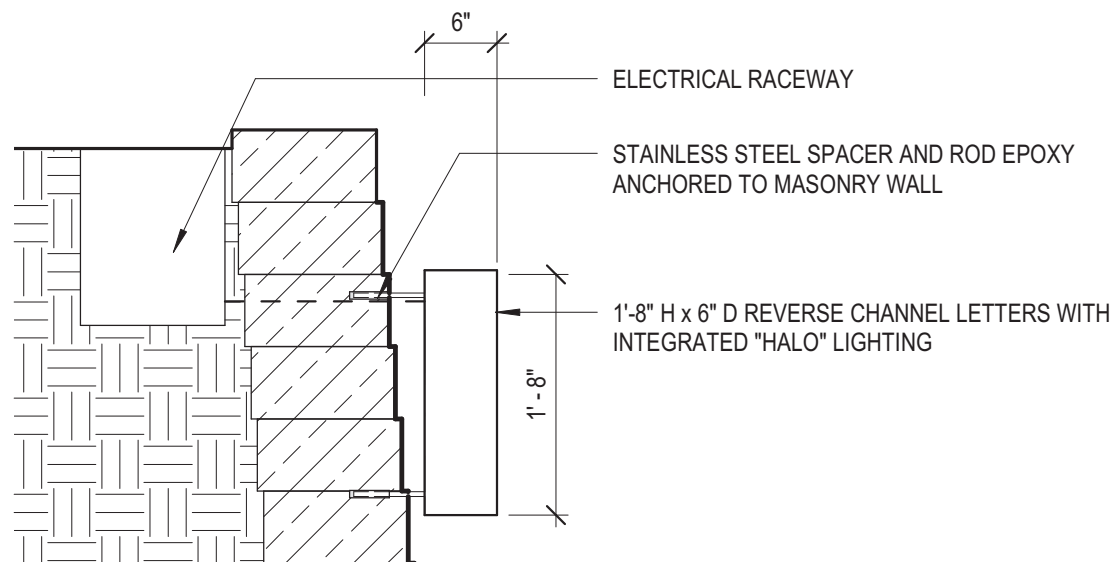
BUILDING SIGNAGE
PARTIAL PLAN & ELEVATION - BRACKENRIDGE
PARK SIGNAGE - LANDSCAPE WALL MOUNTED

Scale: NTS

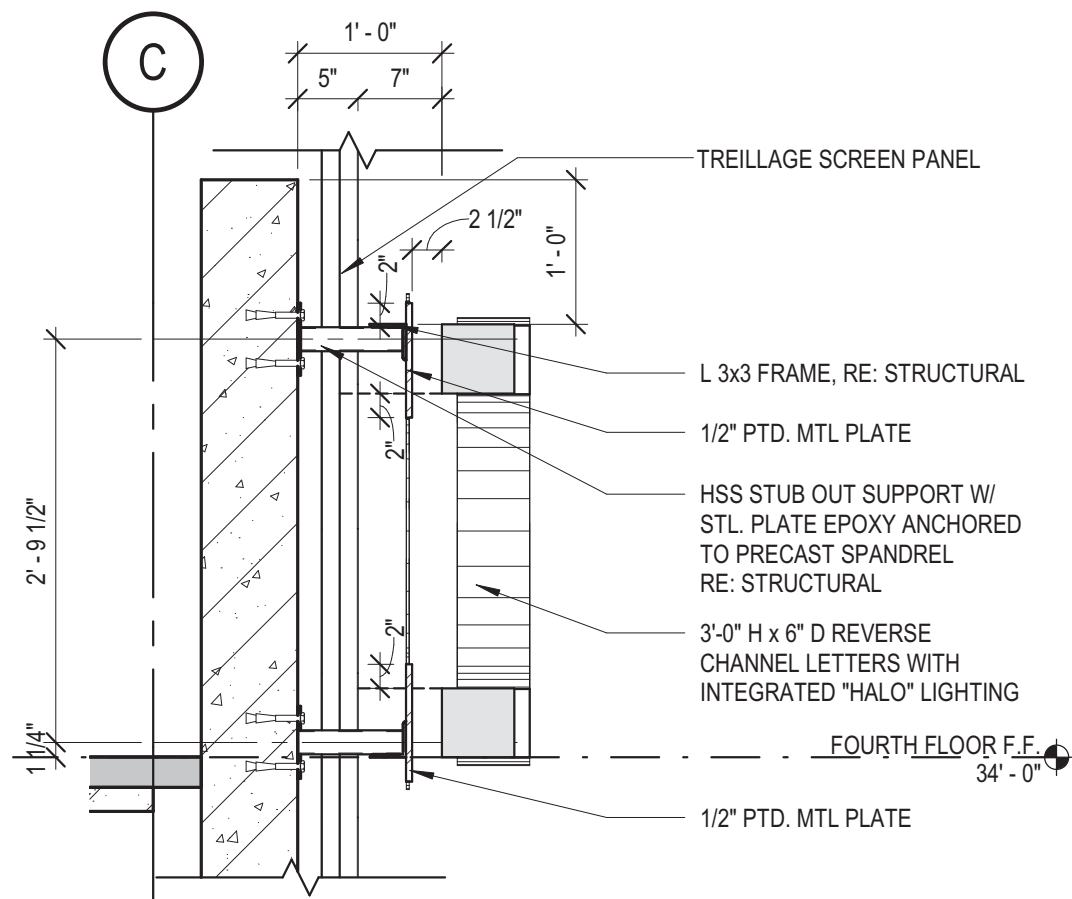


In association with:





Signage Detail - Modular Wall - Brackenridge Park Sign



Signage Detail - Precast with Green Screen - Brackenridge Park sign
(San Antonio Zoo sign similar -refer to elevation for size)

BRACKENRIDGE PARK

Brackenridge Park Signage Color - Matthews Old Copper MP 27168
Matches color palette of existing signage throughout park

Signage Color Elevation - Modular Wall - Brackenridge Park

BRACKENRIDGE PARK

Brackenridge Park Signage Color - Matthews Old Copper MP 27168 w/ Antique White backplate
Matches color palette of existing signage throughout park

Signage Color Elevation - Building Mounted- Brackenridge Park



*Excerpt from CoSA provided Brackenridge Park Signage Construction Documents showing existing Brackenridge color palette

In association with:



Alamo
ARCHITECTS

SAN ANTONIO
ZOO

San Antonio Zoo Parking Garage

Historic Design Review Commission - Final Approval - Signage / Artwork

May 20th, 2020

BUILDING SIGNAGE

SIGNAGE DETAILS & SPECIFICATIONS

Scale: NTS



A large, high power architectural grade spotlight that combines technology and performance in a modern form factor. Packed with features including **EasyGlow™** visual comfort and **CoolDrive™** thermal management technologies. **PowerSync™** allows for highly granular digital control via common protocols. Unique and flexible mounting with glare control accessories enable installation in multiple orientations. Lighting professionals now have greater creative flexibility with the choice of designer lens options, which provides superb color-over-angle consistency and blending of colors even at close blending distances. Standard LED options are also available for exceptional reach.

Up to 620,000 Candela

Performance

Static White & Color ¹	Lumen Output (lm)	Efficacy (lm/W)	Peak Intensity (cd)
● 2,700 K (80 CRI)	7,600	92	219,200
● 3,000 K (80 CRI)	7,630	93	220,000
○ 3,500 K (80 CRI)	7,330	89	211,500
● 4,000 K (80 CRI)	7,630	93	220,100
● 5,000 K (70 CRI)	9,120	111	263,100
● Red	2,220	27	73,900
● Green	4,880	59	160,100
● Blue	2,110	26	69,800

¹ Static white lumen output values are based on a 8° standard lens.

Dynamic Color ²	Lumen Output (lm)	Efficacy (lm/W)	Peak Intensity (cd)
● RGBA	3,650	44	115,700
● RGBW	3,960	48	150,100
● RGBW with Royal Blue	3,600	44	136,400

² Dynamic color lumen output values based on an 10° designer lens.

Tunable White	Lumen Output (lm)	Efficacy (lm/W)	Peak Intensity (cd)
● 2,700 K – 6,500 K	7,230	88	208,600

4.5° BEAM ANGLE (VN OPTION)

Static White & Color ³	Lumen Output (lm)	Efficacy (lm/W)	Peak Intensity (cd)
● 2,700 K (80 CRI)	5,760	67	570,500
● 3,000 K (80 CRI)	5,760	67	570,500
○ 3,500 K (80 CRI)	5,760	67	570,500
● 4,000 K (80 CRI)	6,270	73	621,200
● 5,000 K (70 CRI)	6,270	73	621,200

³ Static white lumen output values are based on a 4.5° designer lens.

Beam Angles

Light Engine	Series	Beam Angles
Static White & Single Color	Standard	8°, 18°, 30°, 45°, 65°, 10° x 40°, 40° x 10°, 10° x 60°, 60° x 10°, 20° x 40°, 40° x 20°, 20° x 60°, 60° x 20°
	Designer ³	4.5°, 10°, 18°, 30°, 45°, 60°, 10° x 40°, 40° x 10°, 10° x 60° 60° x 10°, 20° x 40° 40° x 20°, 20° x 60°, 60° x 20°
Dynamic Color	Designer ³	4.5°, 10°, 18°, 30°, 45°, 60°, 10° x 40°, 40° x 10°, 10° x 60° 60° x 10°, 20° x 40° 40° x 20°, 20° x 60°, 60° x 20°
Tunable White	Designer ³	4.5°, 10°, 18°, 30°, 45°, 60°, 10° x 40°, 40° x 10°, 10° x 60° 60° x 10°, 20° x 40° 40° x 20°, 20° x 60°, 60° x 20°

³ Designer optics provide superb color-over-angle consistency and blending of colors, even at close blending distances.



www.lumascap.com



Products and specifications are subject to change without notice.
LS9160-200116

www.lumascap.com

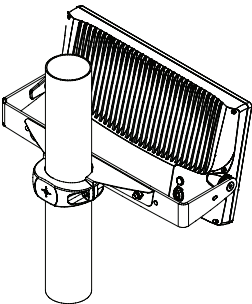


Products and specifications are subject to change without notice.
LS9160-200116

Mounting Accessories

Pole Clamp

Provides an easy method of installing the fixture onto a pole, while retaining fill aiming and adjustability. Available in 3.0" (76 mm), 4.0" (102 mm), 4.5" (114 mm) and 5.0" (127 mm) options.



Specification Matrix

		-	
Mounting Accessories ¹	Code	Finish	Code
3.0" (76 mm) Pole Clamp	LS6317	Black	BL
4.0" (102 mm) Pole Clamp	LS6318	Anthracite Grey	AG
4.5" (114 mm) Pole Clamp	LS6319	Basalt Grey	BT
5.0" (127 mm) Pole Clamp	LS6320	Anodic Silver	SL
		White	WT
		Dark Bronze	DB
		Latte	LT
		Dark Aluminum	DA
		Custom RAL	CC ²

¹ Luminaire must be ordered with a 3G rated bracket.

² RAL color required

In association with:



Light Fixture Cutsheet - Giraffe Lighting - East Facade




San Antonio Zoo Parking Garage
Historic Design Review Commission - Final Approval - Signage / Artwork
May 20th, 2020

LIGHTING
SPECIFICATIONS

Scale: NTS

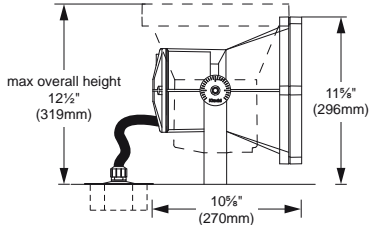


Collection of projectors for exterior applications. Available in two sizes. Thanks to its adjustable spotlights and versatile installation, the MaxiWoody system can light horizontal surfaces (streets, squares, car parks) and vertical planes (facades, monuments, architectural details) simultaneously.

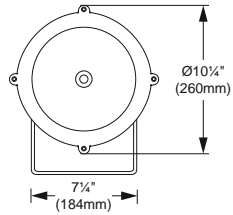
Luminaire characteristics:	
Power input: 28W to 60W Lumens: 2600lm to 6700lm (for 3000K, 80CRI) Luminaire efficacy: Up to 114lm/W	
Source:	White LED (LM-80 Tested) 3000K: 80CRI 4000K: 80CRI
Lumen maintenance:	>80% of initial lumens at 100 000 hours (L80)
Optics:	Available in spot, flood or wide flood.
Material:	Body: Die-cast aluminum optical assembly frame and base. Reflector: 99.93% super-pure aluminum. Diffuser: 4mm thick tempered sodium-calcium glass. Hardware: Stainless steel screws.
Mounting:	Ground, wall, MultiWoody arm and pole flange mounting. Single entry feed. Supplied with 3ft (1m) of power cable.
Electrical:	Universal high efficiency electronic driver, rated at 50 000 hours, 120V-277V.
Dimming:	Supplied standard with 0-10V dimmable LED driver (15% minimum dimming). Leading and trailing edge (ELV) for 120V only for compact.
Finish:	Gray (RAL9007) painted finish with a high level of weather and UV resistance. The semi-gloss finish coating is electrostatically applied, durable acrylic enamel baked at high temperatures for superior color retentive finish.
Weight:	Compact: 10lbs (4.57kg) Small: 16.75lbs (7.60kg)
Warranty:	5 year limited warranty.
Ratings:	IP67, IK08
Certification:	 cULus listed for wet location

DIMENSIONS

COMPACT Ø10¼"

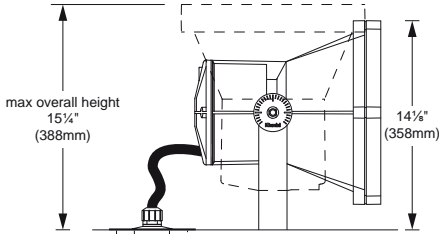


SIDE VIEW

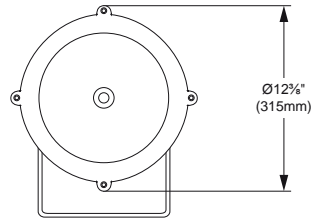


FRONT VIEW

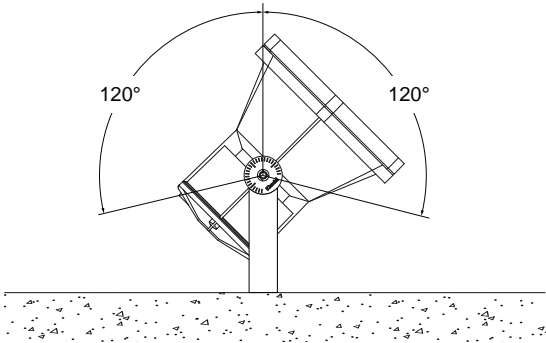
SMALL Ø12¾"



SIDE VIEW



FRONT VIEW



Light Fixture Cutsheet - Giraffe Lighting - South Facade



CITY OF SAN ANTONIO
**OFFICE OF HISTORIC
PRESERVATION**

Historic and Design Review Commission
Design Review Committee Report

DATE: May 5, 2020

HDRC Case #: 2020-117

Signage and Mural installation

Meeting Location: WebEx

APPLICANT: Jeffrey Watson/Alamo Architects

DRC Members present: Curtis Fish, Daniel Lazarine, Scott Carpenter, Jeffrey Fetzer

Others present: Ben Barton/ SA Zoo, Bill Pennell/Parks, Ariel Chavela/Alamo Architects, Mark Beavers,

REQUEST:

Signage and mural installation at Brackenridge Park/San Antonio Zoo parking garage

COMMENTS/CONCERNS:

JW: Overview of signage and mural installation, illumination and materials

JF: Signage is appropriate and is not overlit. Questions regarding Brackenridge Park signage (should it be visible from the north, seen from US HWY 281)?

SC: Has there been discussion between a balance in signage (zoo and park signage)?

TM: Overview of support from stakeholders (SAISD, Brackenridge Park conservancy, Witte, etc.). Signage has been organized and coordinated with stakeholders and the City. General overview on how the proposed signage became determined.

CF: Would be concerned with an increase in signage. Artwork and signage as currently proposed is appropriate.

CE: Comments regarding signage, purview of signage (design).

CF: Is artwork included as signage? (No).

DL: Concerned about the lack of human scale and size to relate to pedestrians.

Overall, support from the DRC.