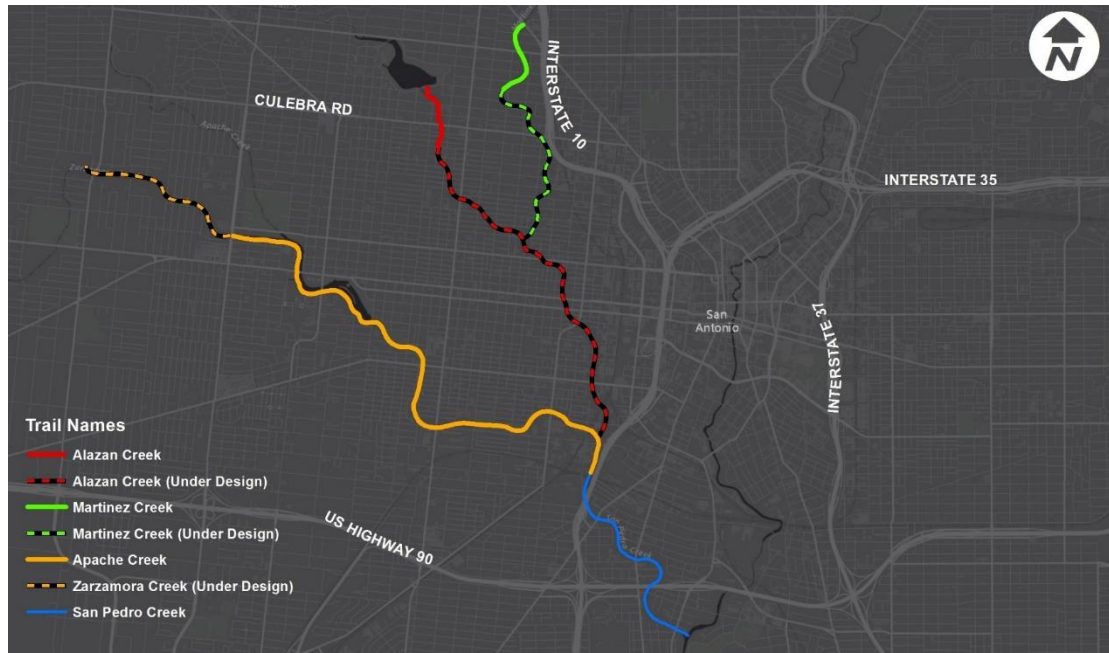




Westside Creeks: Tree Planting

Ross Hosea, Special Projects Manager
Urban Forestry and Trails Division



Westside Creeks Greenway Trail System

- Alazán
- Apache
- Martinez
- San Pedro
- Zarzamora





**Retrofit, Task
2 - Martinez**

**New,
Martinez**

**New,
Alazan**

**Retrofit, Task
3 - Lower
Apache**

**Retrofit, Task
1 - Upper
Apache**

CULEBRA RD

**New,
Zarzamora**

INTERSTATE 10

INTERSTATE 35

INTERSTATE 37


San
Antonio

US HIGHWAY 90

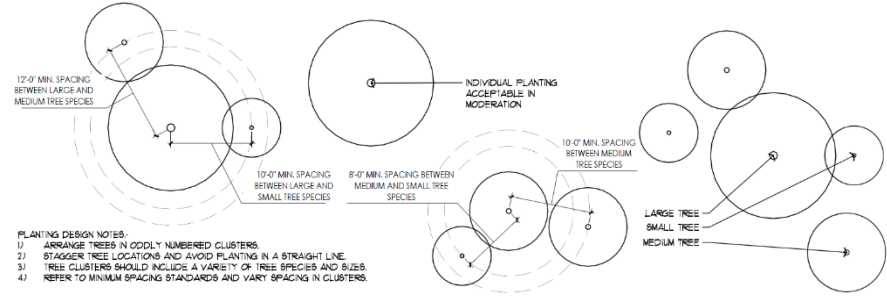
Trail Names

-  Alazan Creek
-  Alazan Creek (Under Design)
-  Martinez Creek
-  Martinez Creek (Under Design)
-  Apache Creek
-  Zarzamora Creek (Under Design)
-  San Pedro Creek

Phoenix



	Common Name	Latin Name	Size	Shade Provision	Sun Needs	Water Needs	Soil Moisture	Roots	Wind	Ice	Rock	Soil
TALL SHADE TREES 40-60' Tall	Black Willow	Salix nigra	L	max 8'7.5'	☀️ ●	High	M, W	● ● ● ● ●	●	●	●	●
	Bur Oak	Quercus macrocarpa	L	max 120'0"	☀️ ●	Medium	D, M	●	●	●	●	●
	Cedar Elm	Ulmus crassifolia	L	max 8'7.5'	☀️ ●	Medium	M	● ● ● ● ●	●	●	●	●
	Chinquapin Oak	Quercus muhlenbergii	L	max 8'7.5'	☀️ ●	Medium	D	● ● ● ● ●	●	●	●	●
	Mexican Sycamore	Platanus mexicana	L	max 120'0"	☀️ ●	High	D, M, W	● ● ● ● ●	●	●	●	●
	Hackberry	Celtis sp.	L	max 8'7.5'	☀️ ●	Low	D, M	● ● ● ● ●	●	●	●	●
	Bald Cypress	Taxodium distichum	L	max 120'0"	☀️ ●	Medium	M	● ● ● ● ●	●	●	●	●
	Live Oak	Quercus virginiana	L	max 8'7.5'	☀️ ●	Medium	M	● ● ● ● ●	●	●	●	●
	Atakia	Ehretia anacard	L	max 8'7.5'	☀️ ●	Low	D	● ● ● ● ●	●	●	●	●
	Pecan	Carya illinoensis	L	max 120'0"	☀️ ●	High	M	● ● ● ● ●	●	●	●	●
MEDIUM TREES 25-40' Tall	Hyalopche	Vachellia farnesiana	M	max 250'0"	☀️ ●	Low	D	● ● ● ● ●	●	●	●	●
	Evo's Necklor	Styphnolobium affine	M	max 8'7.5'	☀️ ●	Low	D	● ● ● ● ●	●	●	●	●
	Mesquite	Prosopis glandulosa	M	max 250'0"	☀️ ●	Low	D	● ● ● ● ●	●	●	●	●
	Carolina Buckhorn	Fraxinus caroliniana	M	max 250'0"	☀️ ●	Medium	M	● ● ● ● ●	●	●	●	●
	Texas Crabapple	Malus ioensis var. texana	M	max 250'0"	☀️ ●	Medium	M	● ● ● ● ●	●	●	●	●
SHORT TREES 15-25' Tall	Kidneywood	Erythronia tozoni	S	max 250'0"	☀️ ●	Low	D	● ● ● ● ●	●	●	●	●
	Mexican Buckeye	Ulmus parviflorus	S	max 250'0"	☀️ ●	Low	D	● ● ● ● ●	●	●	●	●
	Rusty Blackhaw	Viburnum rufidulum	S	max 250'0"	☀️ ●	Low	D, M, W	● ● ● ● ●	●	●	●	●
	Texas Mountain Laurel	Sophora secundiflora	S	max 250'0"	☀️ ●	Low	D, M	● ● ● ● ●	●	●	●	●
	Bonsai Hawth	Tree decidua	S	max 250'0"	☀️ ●	Medium	M	● ● ● ● ●	●	●	●	●



- PLANTING DESIGN NOTES:
- 1) ARRANGE TREES IN ODDLY NUMBERED CLUSTERS
 - 2) STAGGER TREE LOCATIONS AND AVOID PLANTING IN A STRAIGHT LINE
 - 3) TREE CLUSTERS SHOULD INCLUDE A VARIETY OF TREE SPECIES AND SIZES
 - 4) REFER TO MINIMUM SPACING STANDARDS AND VARY SPACING IN CLUSTERS

7 PLAN: TREE CLUSTER SPACING

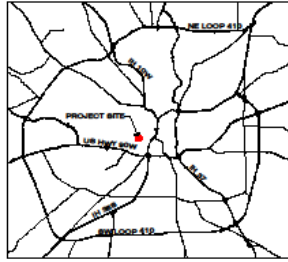
NOT TO SCALE

Design Process

TREE LIST

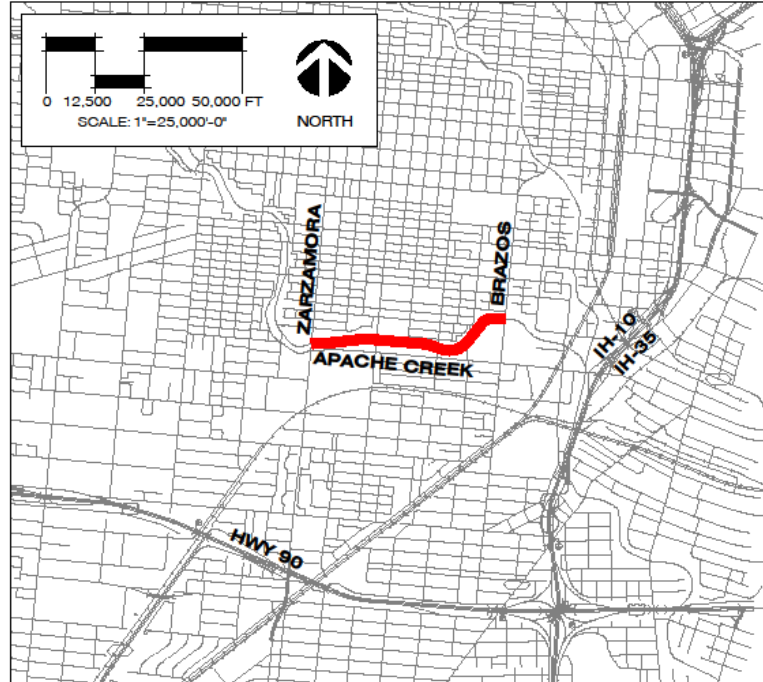
QTY	KEY	UNIT	COMMON NAME	SCIENTIFIC NAME	SIZE	HEIGHT	SPREAD
7	ANA	EA	Anaqua	<i>Ehretia anacua</i>	3" caliper/24" min. dia. rootball	10	5
27	BUC	EA	Mexican Buckeye	<i>Ungnadia speciosa</i>	#15 cont./24" min. dia. rootball	3.5	2
16	ELM	EA	Cedar Elm	<i>Ulmus crassifolia</i>	2" caliper/24" min. dia. rootball	8	4
23	ELM	EA	Cedar Elm	<i>Ulmus crassifolia</i>	4" caliper/36" min. dia. rootball	12	6
15	LOK	EA	Lacey Oak	<i>Quercus glaucooides</i>	1-1/2" caliper/24" min. dia. rootball	8	4
12	LOK	EA	Lacey Oak	<i>Quercus glaucooides</i>	3" caliper/24" min. dia. rootball	8	4
16	MOK	EA	Monterrey Oak	<i>Quercus polymorpha</i>	6" caliper/60" min. dia. rootball	18	8
13	MPL	EA	Mexican Plum	<i>Prunus mexicana</i>	#15 cont./24" min. dia. rootball	3.5	2
19	MPL	EA	Mexican Plum	<i>Prunus mexicana</i>	3" caliper/24" min. dia. rootball	8	4
20	OAK	EA	Live Oak	<i>Quercus virginiana</i>	2" caliper/24" min. dia. rootball	8	4
18	OAK	EA	Live Oak	<i>Quercus virginiana</i>	4" caliper/36" min. dia. rootball	12	6
12	PEC	EA	Pecan	<i>Carya illinoensis</i>	4" caliper/36" min. dia. rootball	12	6
39	POS	EA	Possumhaw Holly	<i>Ilex decidua</i>	#15 cont./24" min. dia. rootball	3.5	2
42	RBT	EA	Texas Redbud	<i>Cercis texensis</i>	2" caliper/24" min. dia. rootball	8	4
11	RET	EA	Retama (Multi-trunk)	<i>Parkinsonia aculeata</i>	36" box/ 24" min. dia. rootball	8	6
15	SYC	EA	Mexican Sycamore	<i>Plantanus mexicana</i>	3" caliper/24" min. dia. rootball	8	4
35	WLO	EA	Mexican Olive	<i>Cordia boissieri</i>	#15 cont./24" min. dia. rootball	3.5	2
88	BUF	SY	Buffalograss Sod	<i>Bouteloua dactyloides</i>	Solid Sod		





SITE MAP
WESTSIDE CREEKS TREE
PLANTING ENHANCEMENTS
APACHE CREEK TRAIL
(S. ZARZAMORA ST. TO S. BRAZOS ST.)

LOCATION MAP



Upper Apache Creek

- 340 Trees Planted With Irrigation
- 0.55 Trail Miles
- Completed: Summer 2019







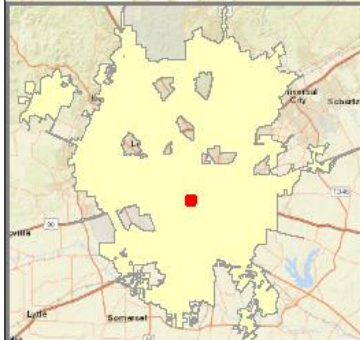
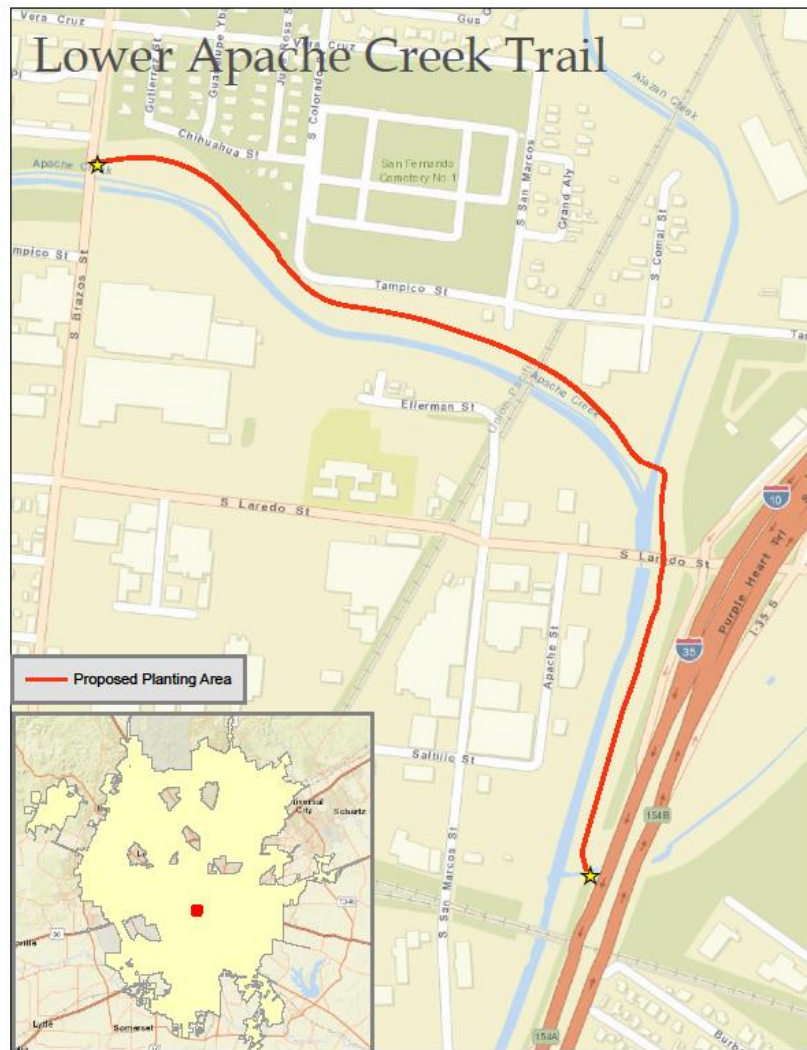
Martinez Creek

- 350 Trees Planted With Irrigation
- 0.60 Trail Miles
- Completion: September 2020





Lower Apache Creek Trail



Lower Apache Creek

- 175 Trees To Be Planted With Irrigation
- 0.75 Trail Miles
- Completion: Winter 2021





Questions?