



CITY OF SAN ANTONIO  
**EDWARDS AQUIFER**  
PROTECTION PROGRAM

# Conservation Advisory Board

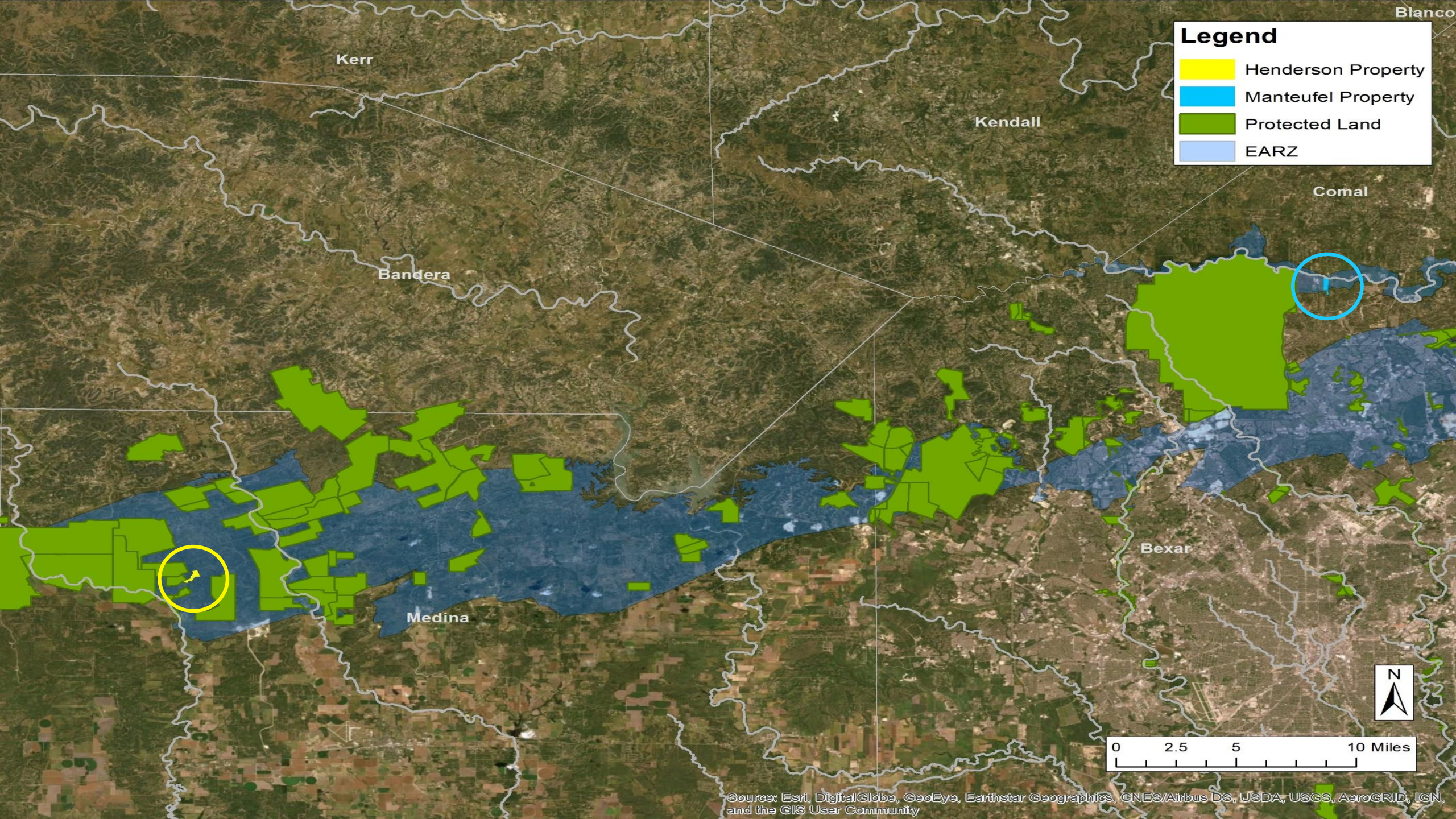
## August 26, 2020



GREEN  
SPACES  
ALLIANCE  
OF SOUTH TEXAS

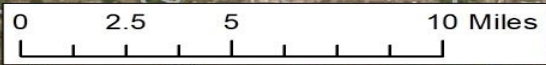
Henderson and Manteufel Properties





**Legend**

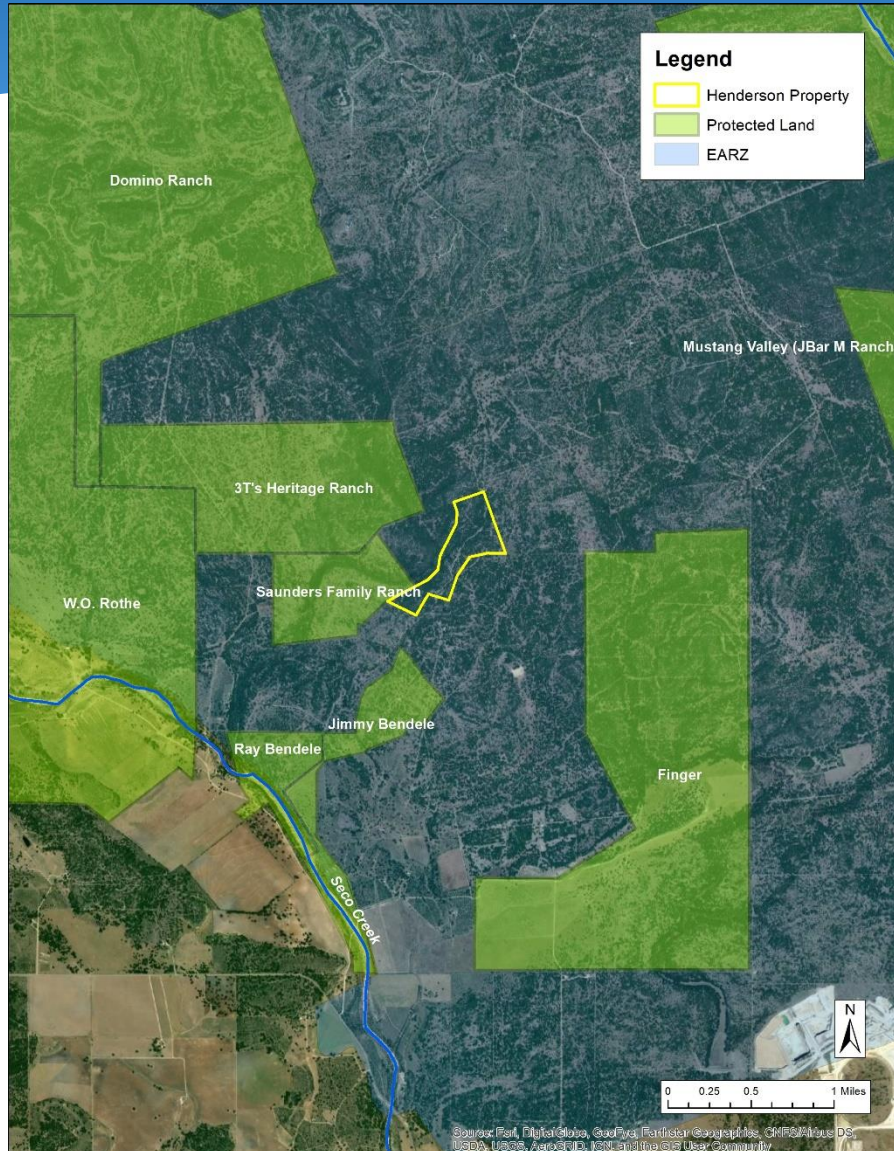
- Henderson Property
- Manteufel Property
- Protected Land
- EARZ



Source: Esri, DigitalGlobe, GeoEye, Earthstar Geographics, CNES/Airbus DS, USDA, USGS, AeroGRID, IGN, and the GIS User Community



# Henderson Property (~100 acres) Medina County



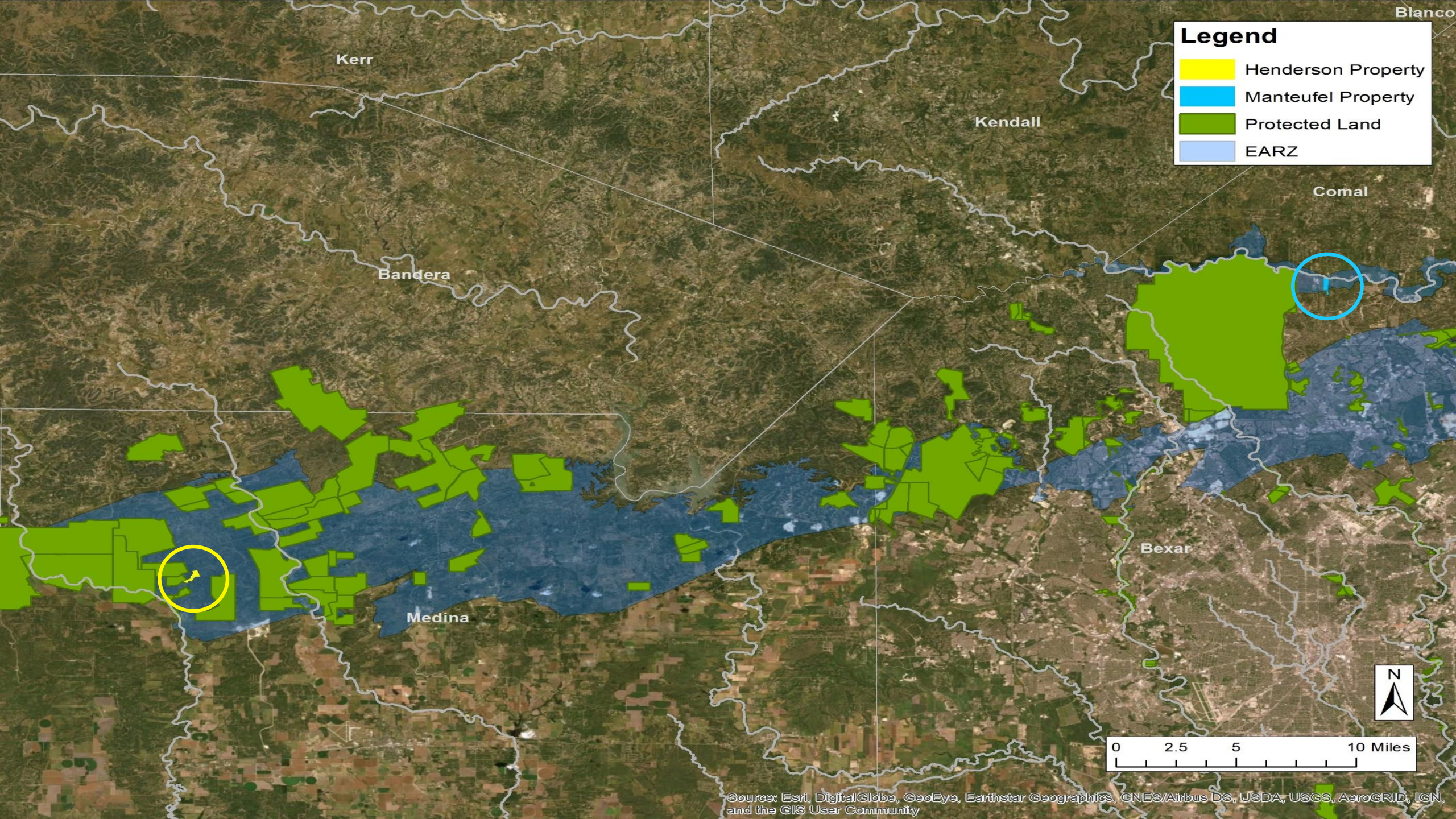


## Henderson Property (~100 acres) Medina County

- ~100 acres
  - 100% EARZ
  - Top 50% SET
  - Karst features observed
  - Adjacent to Saunders CE, and near several other EAPP CEs
  - Seco Creek watershed
- 
- Requesting Stage 1 Approval

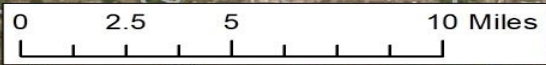






**Legend**

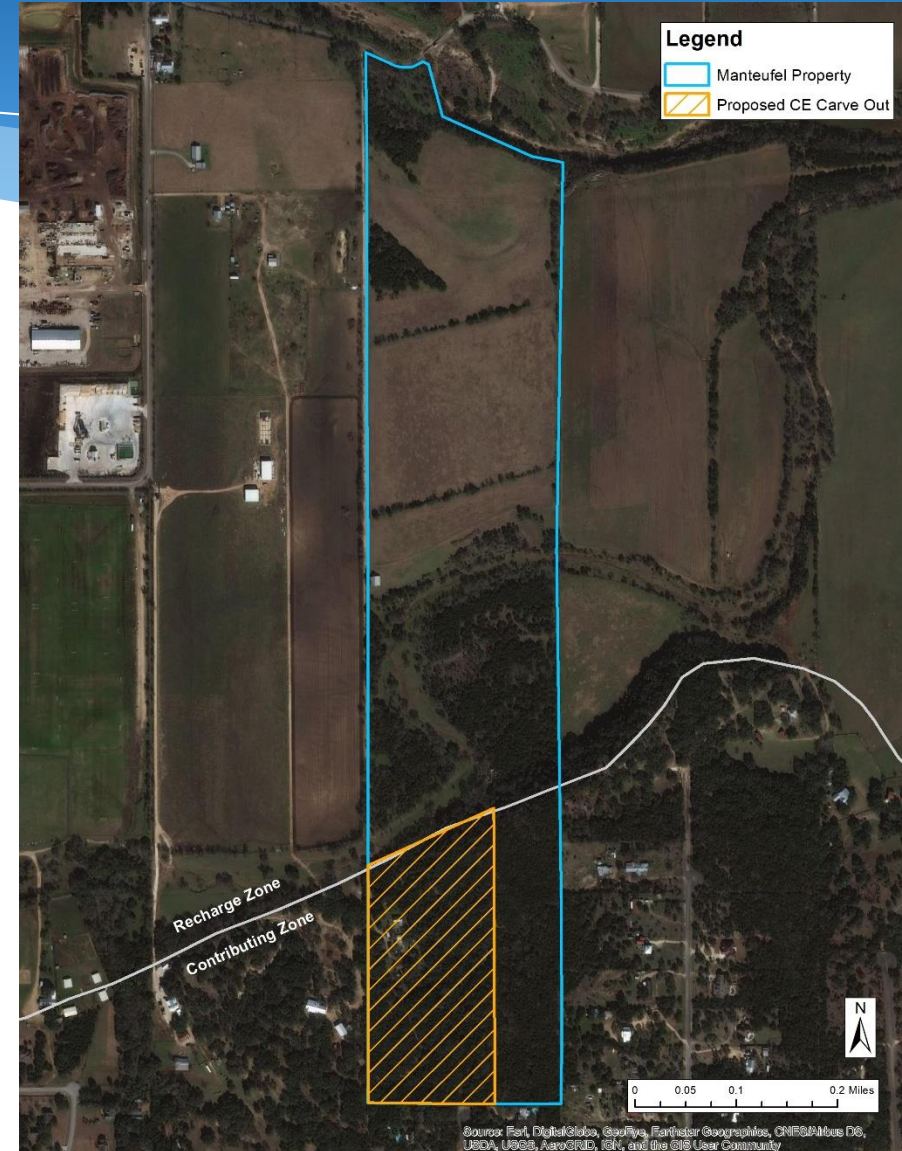
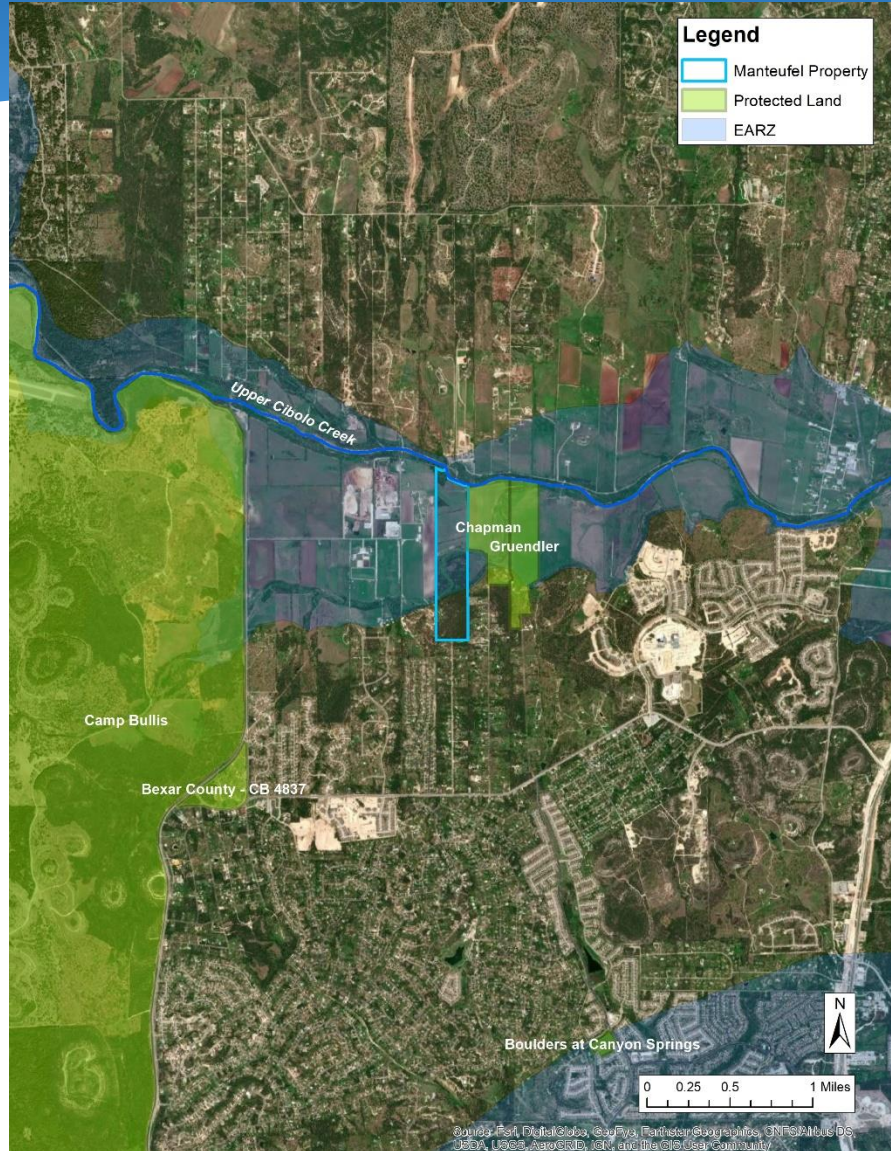
- Henderson Property
- Manteufel Property
- Protected Land
- EARZ



Source: Esri, DigitalGlobe, GeoEye, Earthstar Geographics, CNES/Airbus DS, USDA, USGS, AeroGRID, IGN, and the GIS User Community



# Manteufel Property (~100 acres) Bexar County





## Manteufel Property (~100 acres) Bexar County

- ~100 acres
  - ~90% EARZ
  - Top 20% SET
  - Includes Cibolo and Meusebach Creeks
  - Adjacent to Chapman CE
  - High to very high water quantity
  - Moderate to high water quality
  - Proposed 21-acre carve out
    - CE will protect key karst features identified on the property
- Requesting Stage 2 Approval

