



CITY OF SAN ANTONIO
EDWARDS AQUIFER
PROTECTION PROGRAM

Conservation Advisory Board

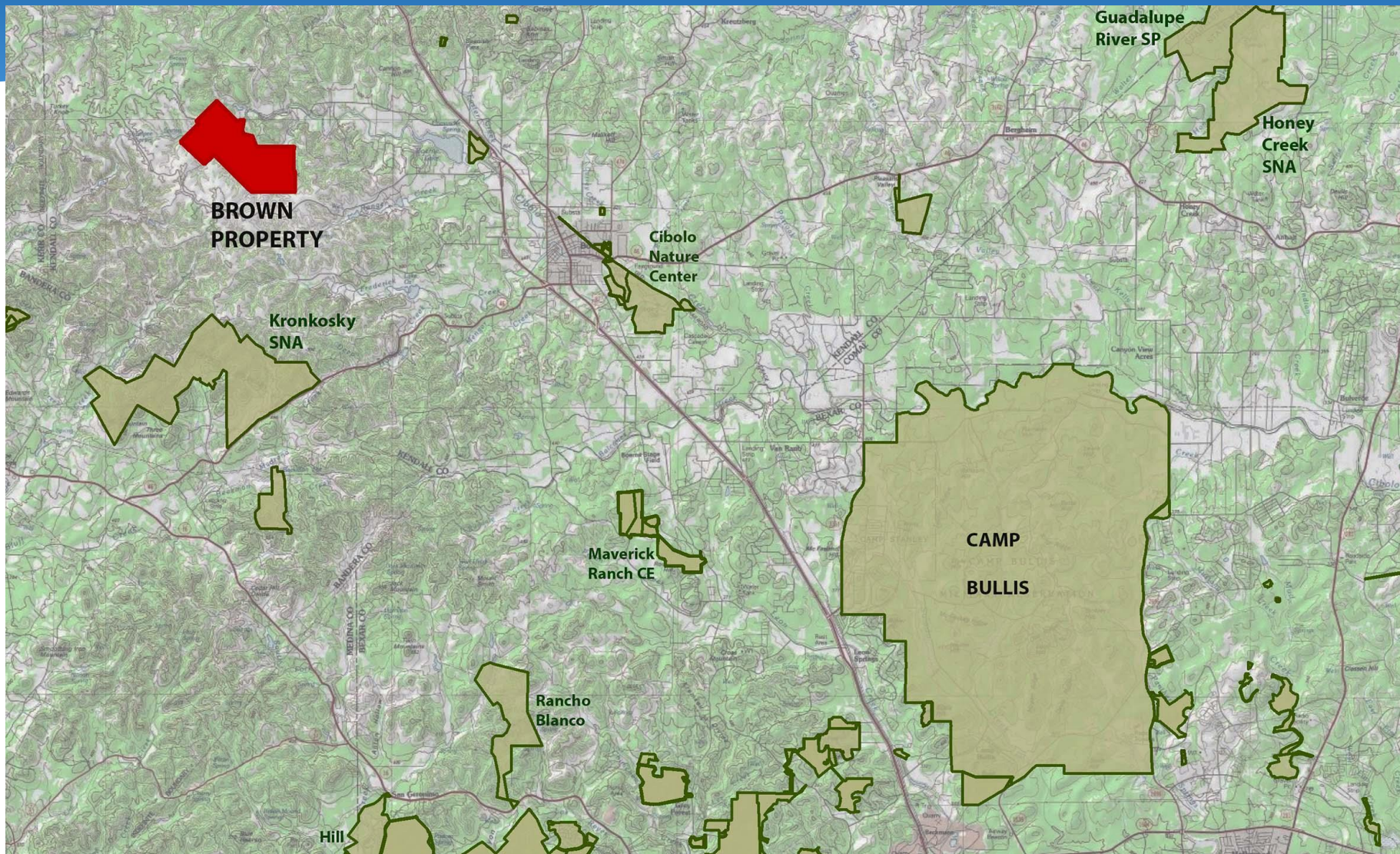
August 26, 2020

The Nature Conservancy



Brown Ranch, Mazurek Ranch & Bloomfield Hills Property

Brown Ranch (1,608 Acres) Kendall County

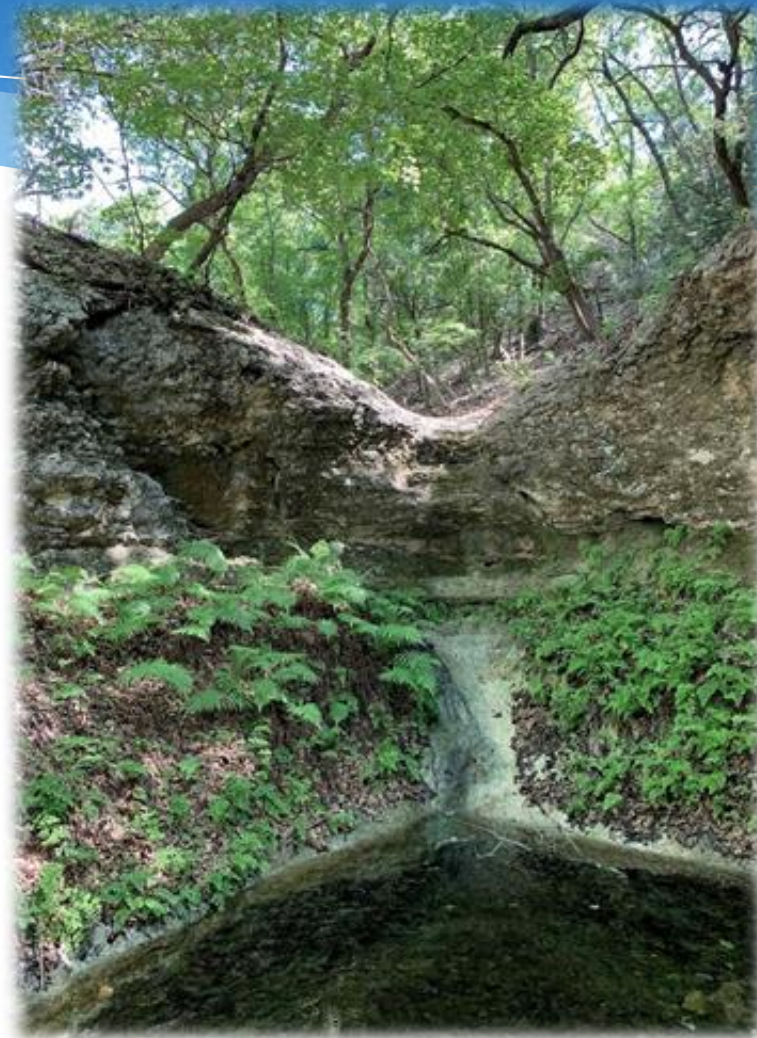


Brown Ranch (1,608 Acres) Kendall County

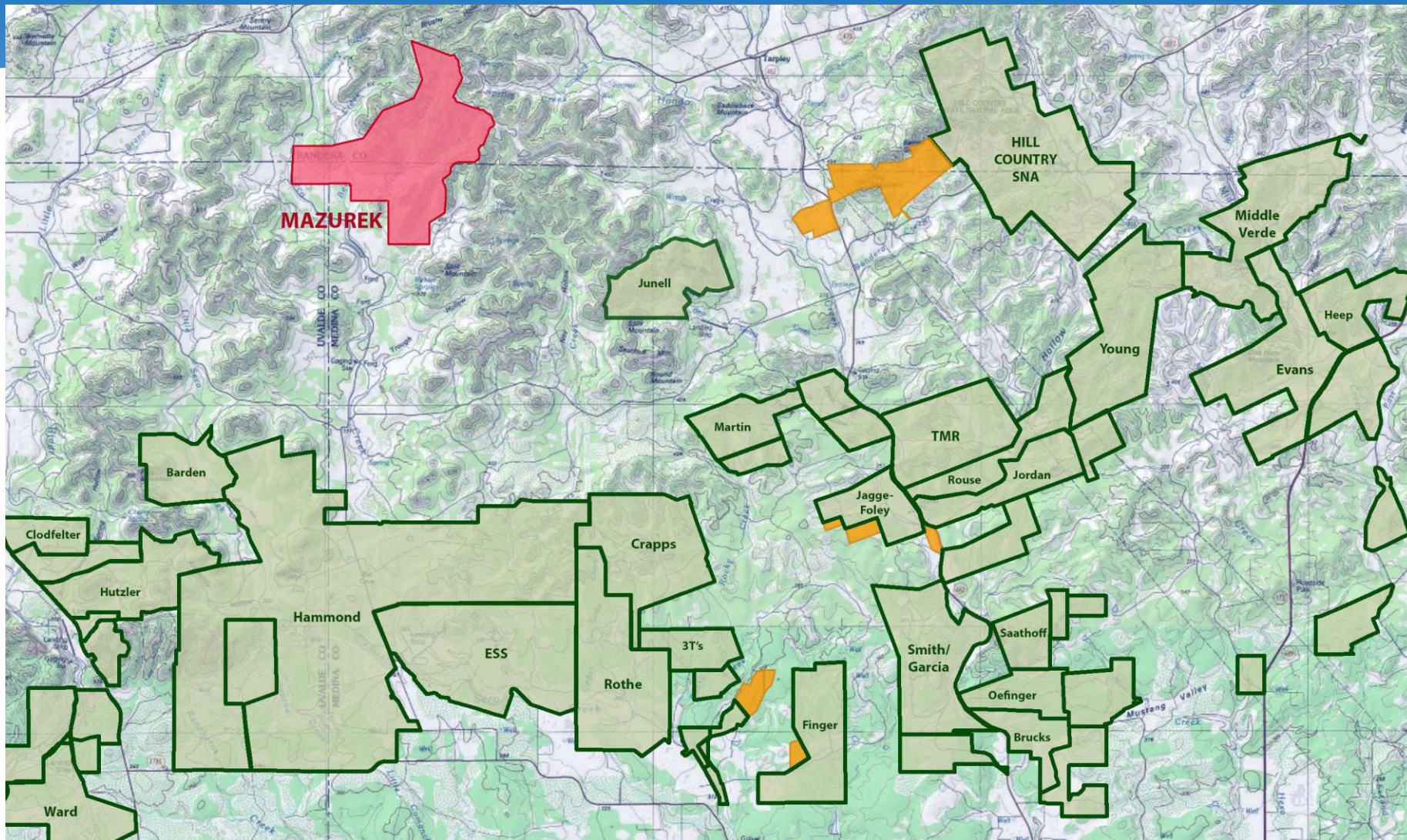


Brown Ranch (1,608 Acres) Kendall County

- Headwaters of Cibolo Creek with ten springs; largely undeveloped
- EAA ranked very high for water quantity, very high for water quality
- **Requesting Final Approval**



Mazurek Ranch (3,900 Acres) Bandera/Medina/Uvalde Counties



Mazurek Ranch (3,900 Acres) Bandera/Medina/Uvalde Counties

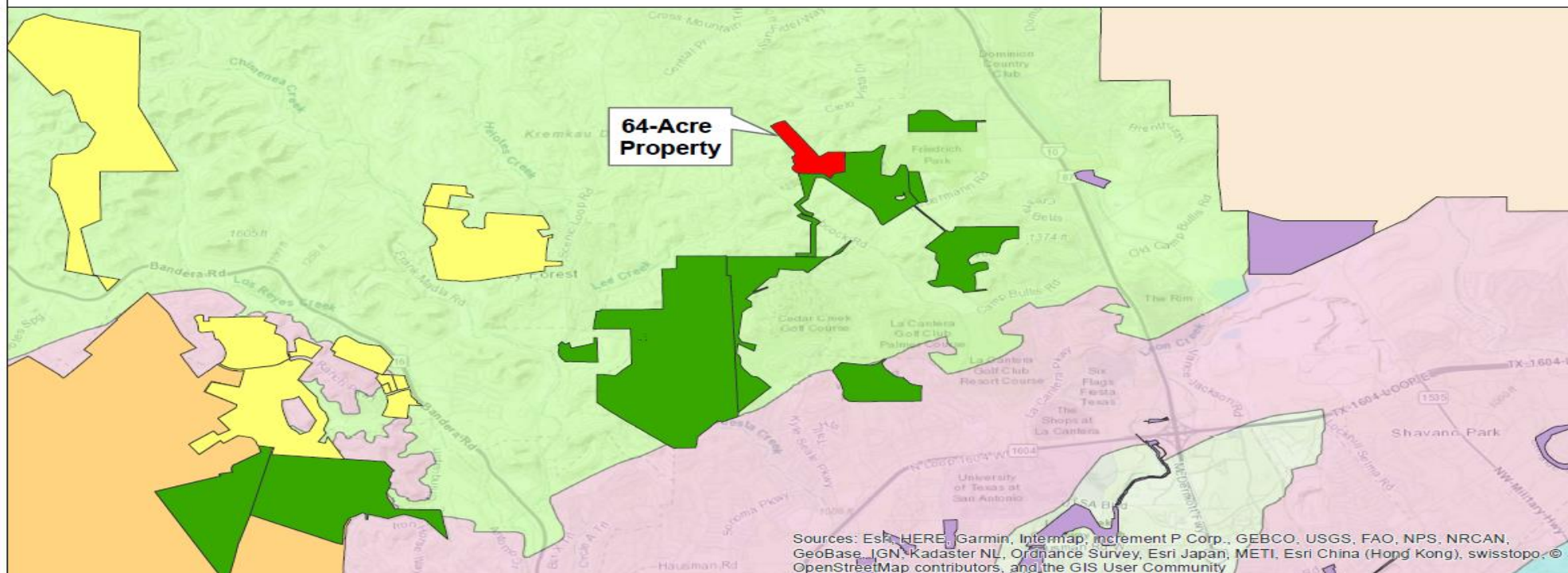
- Large ranch in Seco Creek watershed
- Includes Seco and tributary, springs, dinosaur tracks
- Includes 750 acres owned by Mazureks with remaining acreage in family trust
- EAA ranked high for water quantity, very high for water quality
- **Requesting Stage 1-B (Appraisal)**






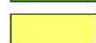

Bloomfield Hills Property (~55 Acres) Bexar County



City of San Antonio Edwards Aquifer Protection Program Friedrich Wilderness Area Property



Sources: Esri, HERE, Garmin, Intermap, increment P Corp., GEBCO, USGS, FAO, NPS, NRCAN, GeoBase, IGN, Kadaster NL, Ordnance Survey, Esri Japan, METI, Esri China (Hong Kong), swisstopo, OpenStreetMap contributors, and the GIS User Community

- | | | |
|--|--|---|
|  64-Acre Property |  City Parks |  Edwards Aquifer Contributing Zone |
|  Proposition 3 Properties |  Federal Managed Land |  Edwards Aquifer Recharge Zone |
|  Proposition 1 Properties |  Texas Parks and Wildlife |  Edwards Aquifer Artesian Zone |

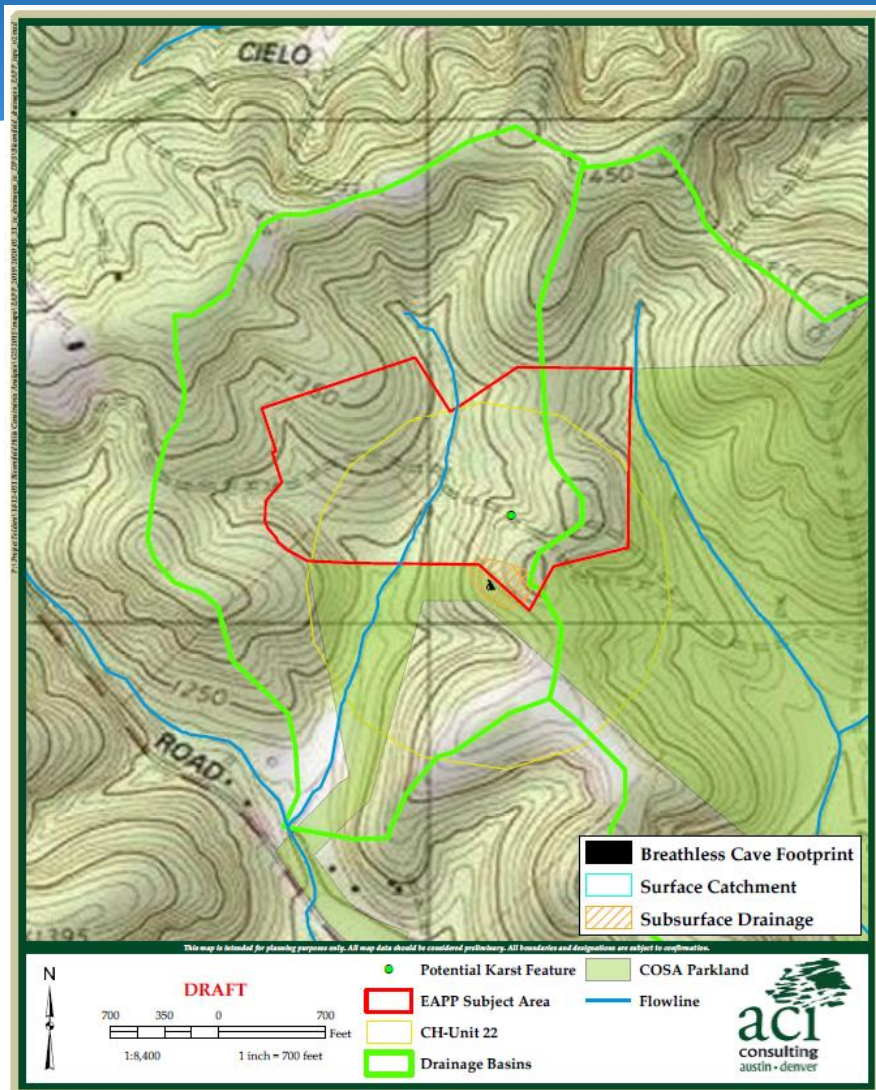
0 0.75 1.5 3 4.5 6 Miles



THE CITY OF SAN ANTONIO MAKES NO WARRANTY, REPRESENTATION, OR GUARANTEE OF ANY KIND REGARDING THIS MAP OR INFORMATION PROVIDED HEREIN.

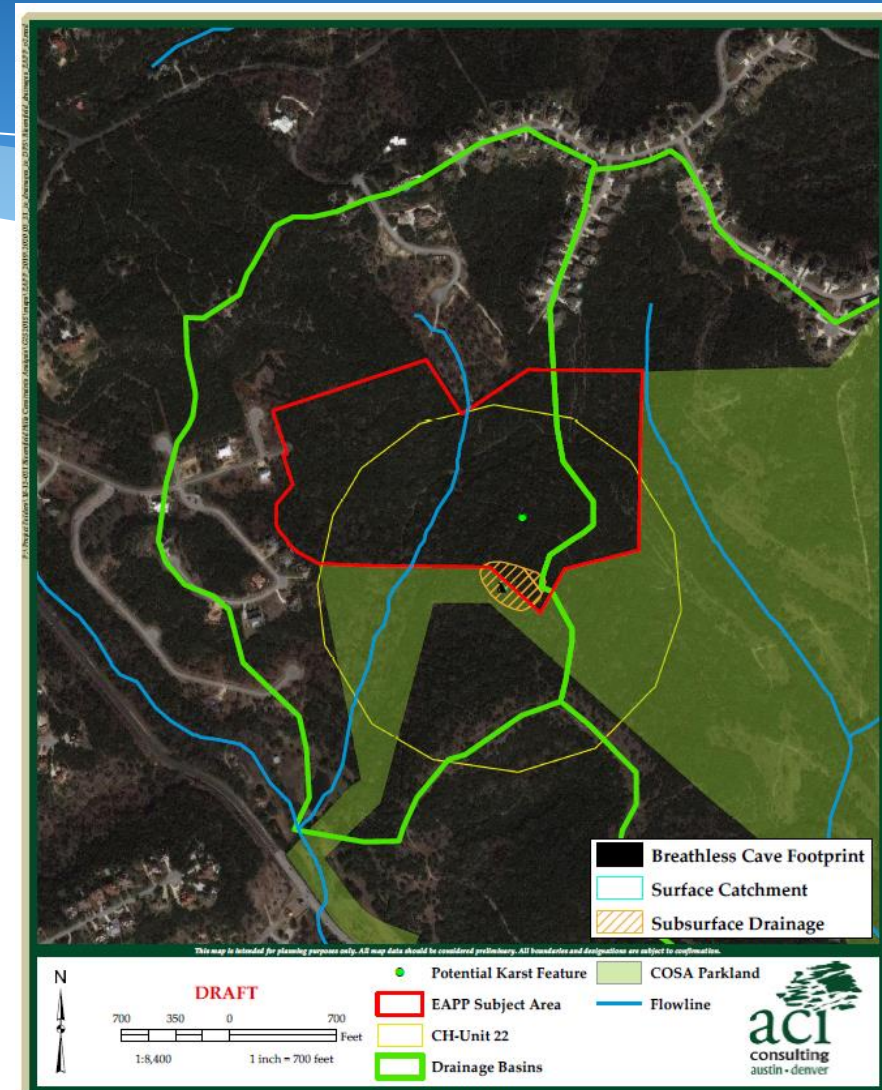
The City of San Antonio assumes no liability either for any errors, omissions, or inaccuracies in the information provided regardless of the cause of such or for any decision made, action taken, or action not taken by the user in reliance upon any maps or information provided.

Bloomfield Hills Property (~55 Acres) Bexar County



Bloomfield
Drainage Basins - Topographic Map

aci Project No.: 18-13-031
March 2020



Bloomfield
Drainage Basins - Aerial Photograph

aci Project No.: 18-13-031
March 2020

Bloomfield Hills Property (~55 Acres) Bexar County

- Located in Contributing Zone in Bexar County
- Adjacent to Friedrich Wilderness Park; contains drainage buffer for Breathless Cave
- Owned by developer of Bloomfield Hills subdivision off Babcock Road
- Contains karst features
- EAA ranked high to moderate water quality and quantity benefit for the City
- Requesting Stage 2 Approval

