



CITY OF SAN ANTONIO
EDWARDS AQUIFER
PROTECTION PROGRAM

Conservation Advisory Board

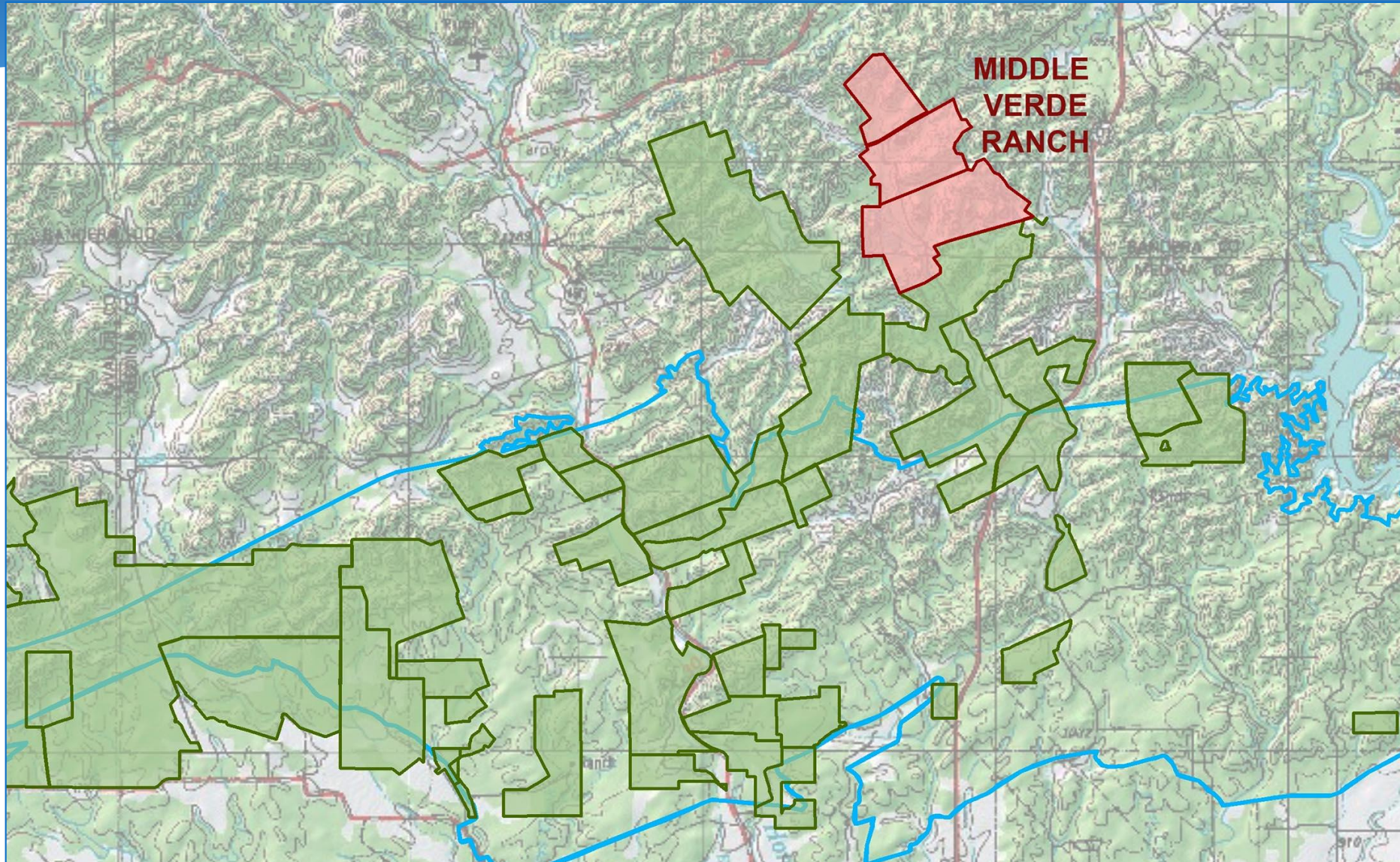
September 23, 2020

The Nature Conservancy

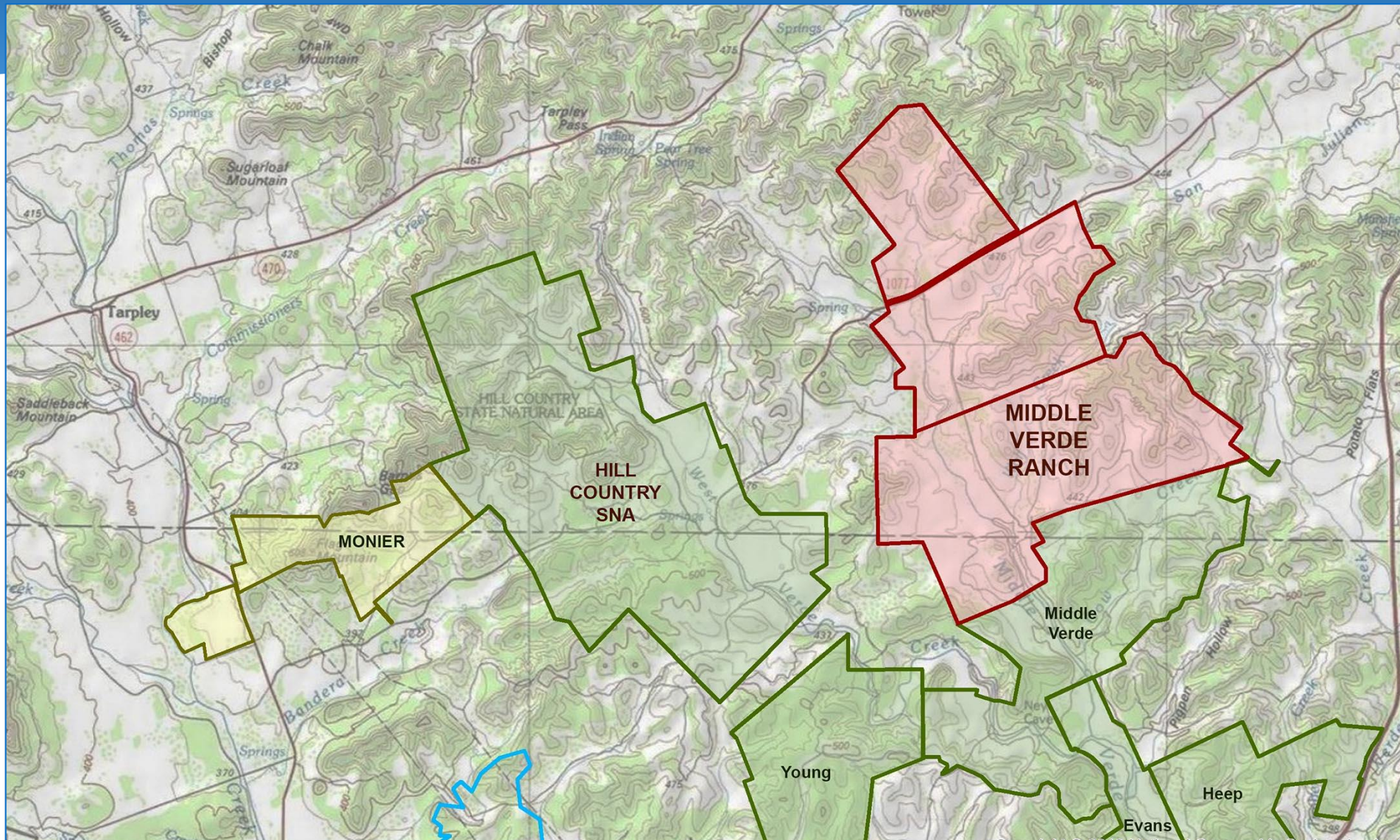


Middle Verde & Ellen White Ranches

Middle Verde Ranch (2,900-6,000 Acres) Bandera/Medina Counties



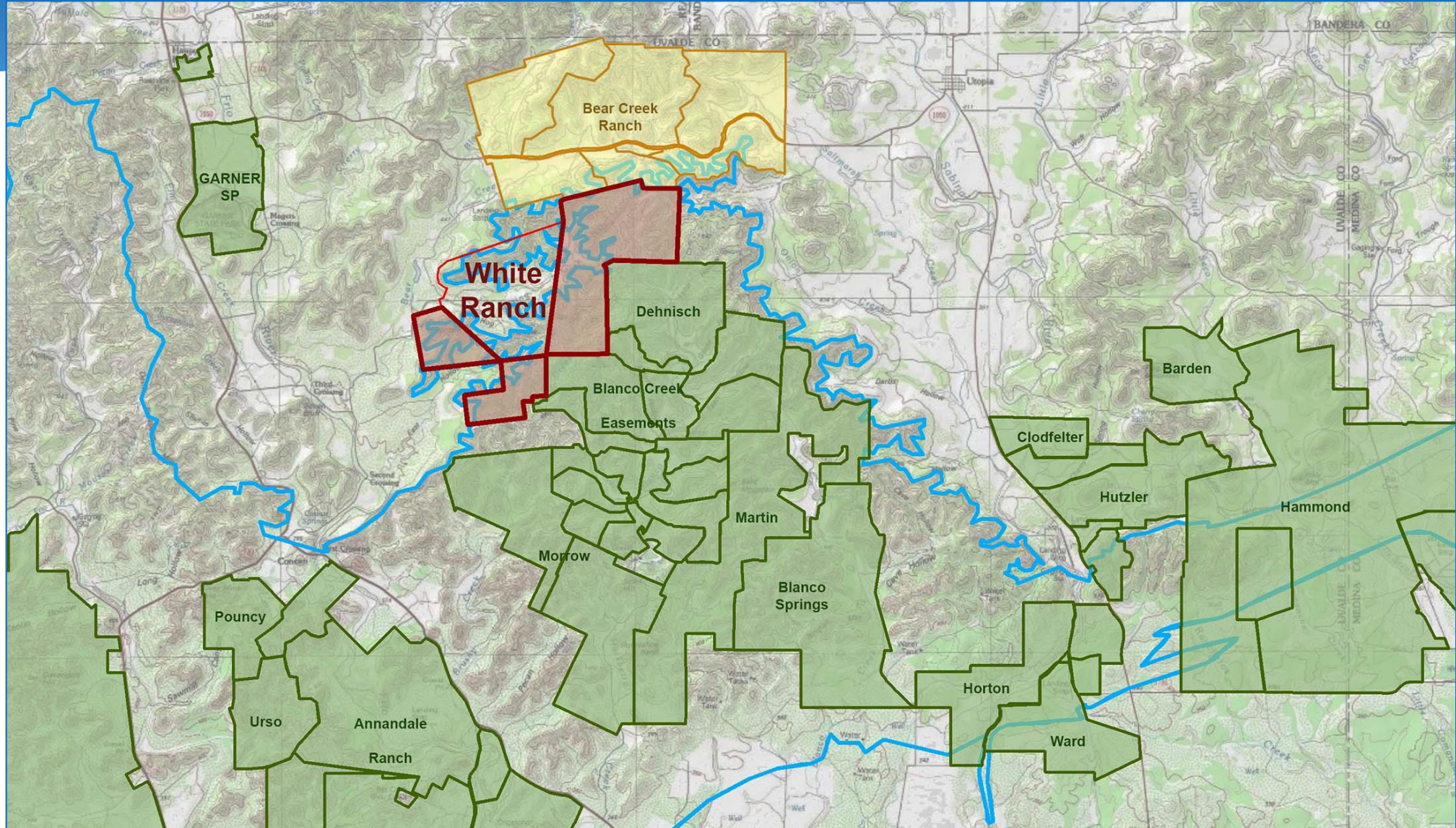
Middle Verde Ranch (2,900-6,000 Acres) Bandera/Medina Counties



Middle Verde Ranch (2,900-6,000 Acres) Bandera/Medina Counties

- City acquired easement on southern 1/3 of ranch in 2017
- Family wants to sell an easement on the remainder of the ranch or a 2,900-acre middle section
- Middle part of ranch ranked in Top 30% in new model; northern portion of ranch unranked
- **Requesting Stage 1**

Ellen White Ranch (~5,000 Acres) Uvalde County



Ellen White Ranch (~5,000 Acres) Uvalde County

- 8,000-acre ranch largely within the recharge zone
- Ranked Top 30% in new model (top 10% in previous model)
- Being offered easement on parts of ranch; would connect Blanco Creek easements with Bear Creek Ranch
- **Requesting Stage 1**