



CITY OF SAN ANTONIO
EDWARDS AQUIFER
PROTECTION PROGRAM

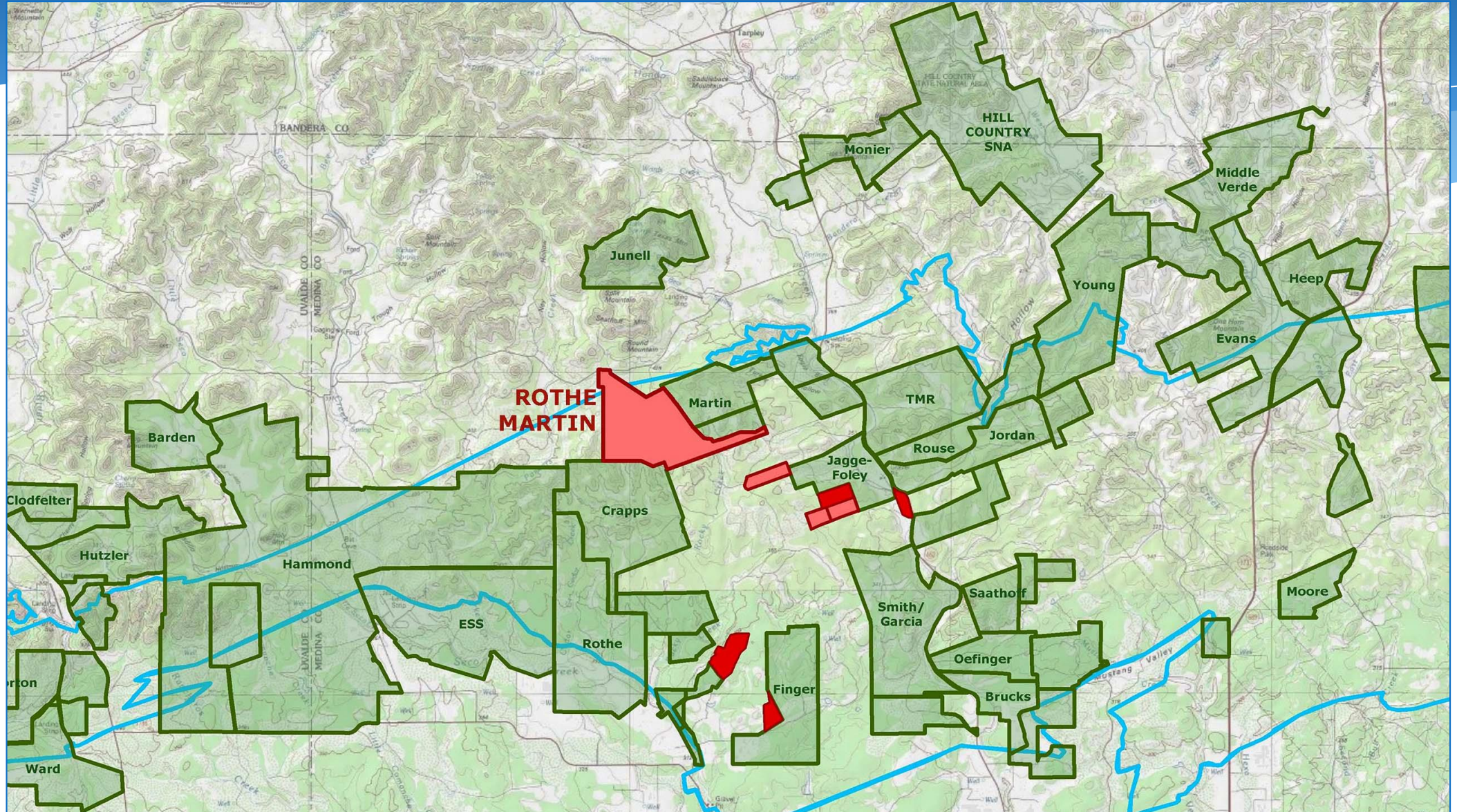
Conservation Advisory Board

October 28, 2020



Rothe Martin Addition
Pearce, Kolinek and Galewsky properties
Mazurek Ranch
Khadem property
Hilton Ranch
Smart Ranch
Shut In Ranch
Klaus Ranch

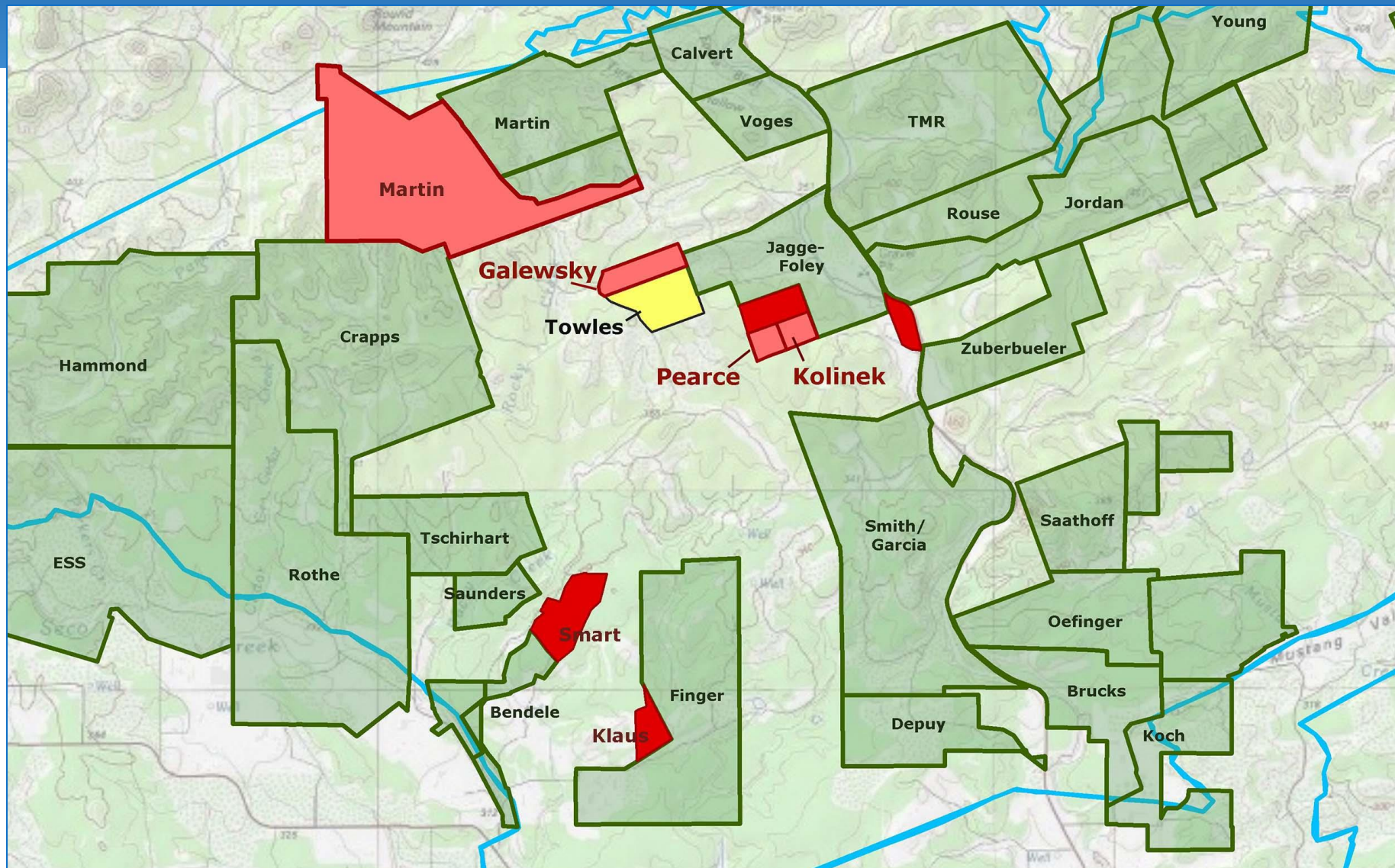
Rothe Martin 3 (1,740 Acres) Medina County



Rothe Martin 3 (1,740 Acres) Medina County

- Remainder of ranch with two prior COSA easements
- Connects Domino Ranch, Calvert forming a continuous 20-mile corridor of easement lands
- Mostly in recharge zone; ranked top 60% in model
- **Requesting Stage 1**

Jagge-Foley Neighbors (Pearce, Kolinek & Galewsky (~248 Acres) Medina County



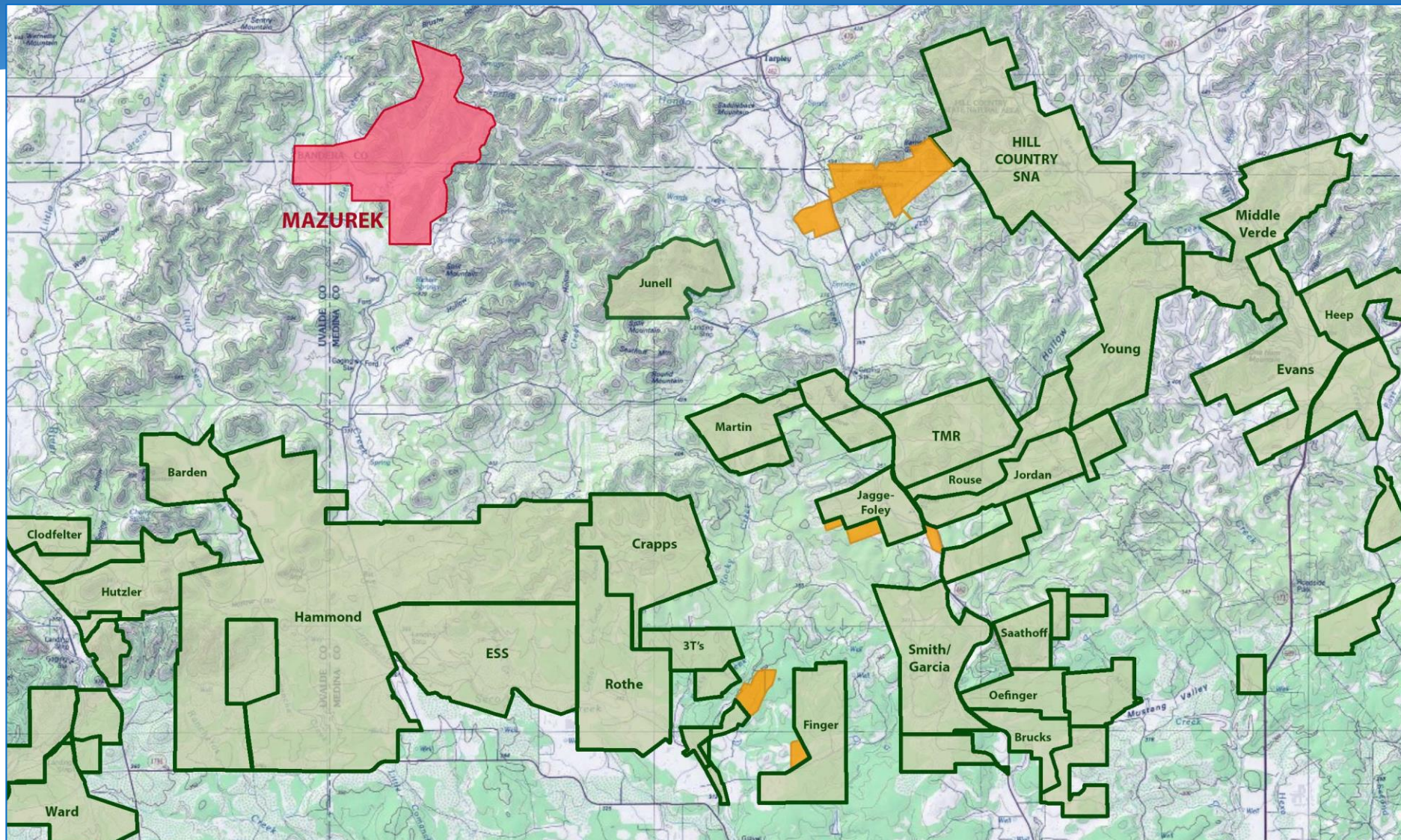


Jagge-Foley Neighbors (Pearce, Kolinek & Galewsky (~248 Acres) Medina County

- Several parcels adjoining Jagge-Foley Ranch east of Domino Ranch
- Owners very interested in the Program; including Galewsky (135 acres), Pearce (57 acres), Kolinek (56 acres) and others
- **Requesting Stage 1**



Mazurek Ranch (3,753 Acres) Bandera/Medina/Uvalde Counties



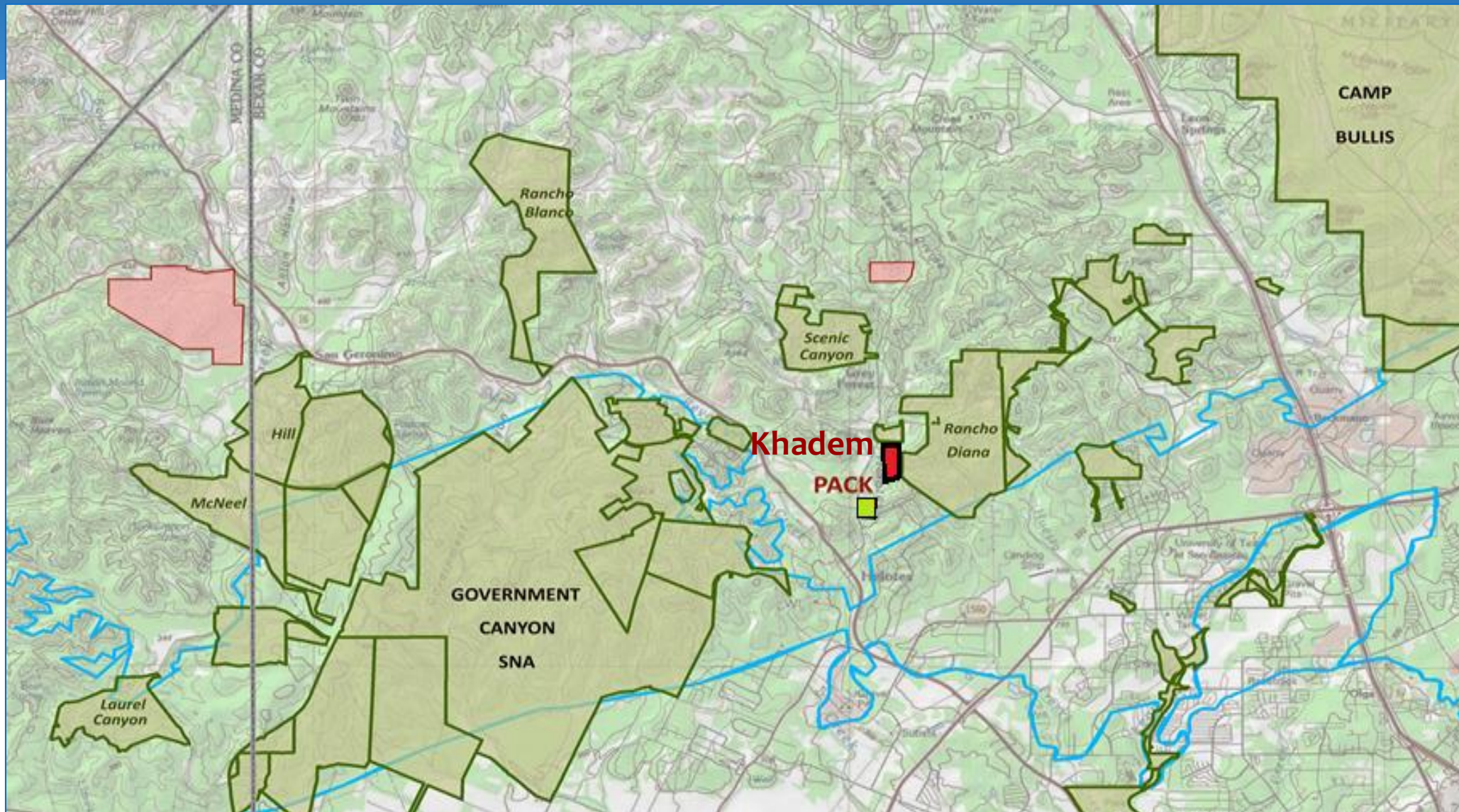
Mazurek Ranch (3,753 Acres) Bandera/Medina/Uvalde Counties

- Large ranch in Seco Creek watershed
- Includes Seco and tributary, springs, & dinosaur tracks
- EAA report found high water quantity, very high water quality benefit
- **Requesting Stage 2**





Khadem Property (82.7 Acres) Bexar County





Khadem Property (82.7 Acres) Bexar County

Khadem Property

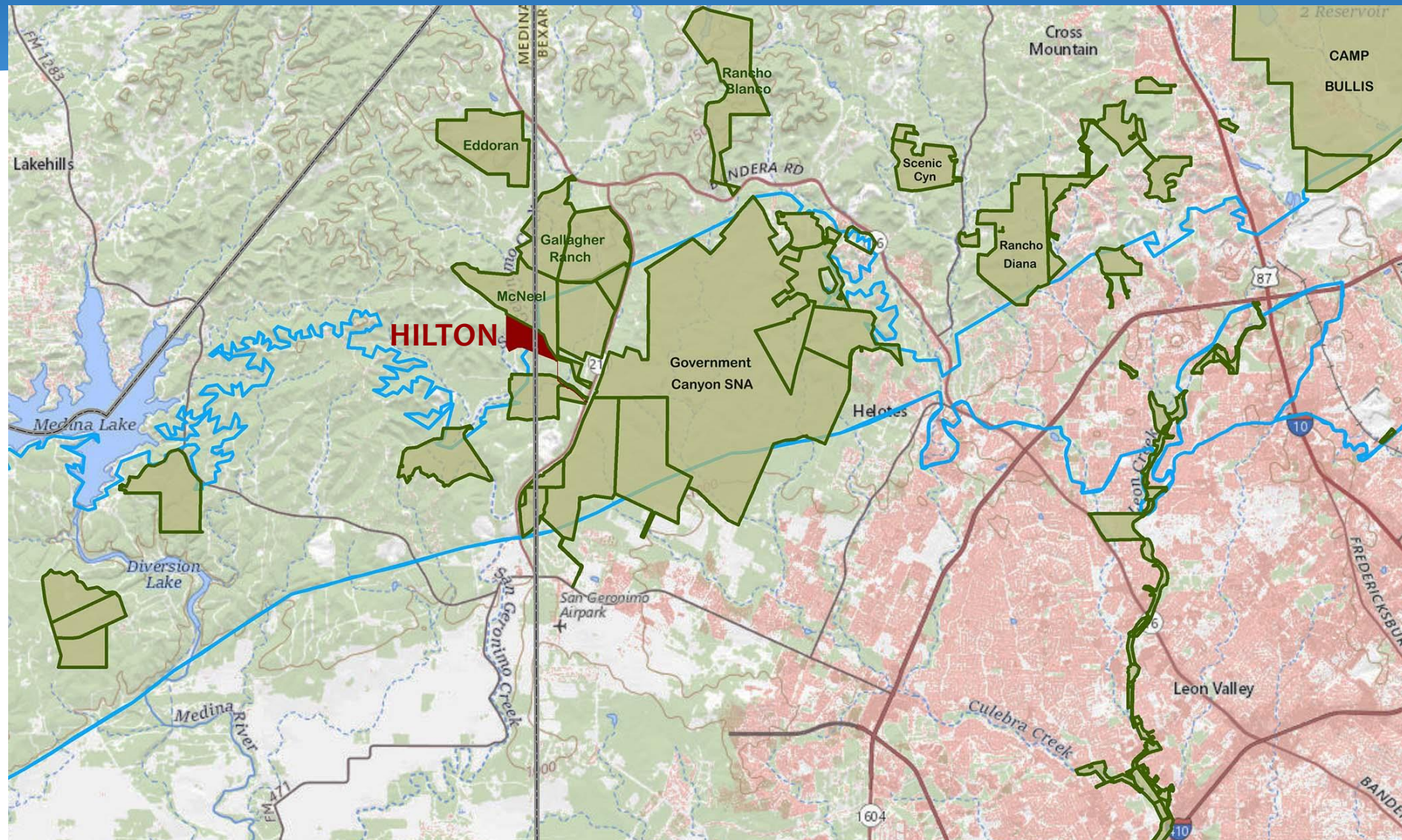
- 82.7 Acres located adjacent to Rancho Diana and Madla Park CE; also near Pack CE
- Located within Helotes Creek watershed in Contributing Zone
- Owner seeking property sale to EAPP

➤ **Requesting Stage 2**





Hilton Ranch (190.9 Acres) Bexar/Medina Counties

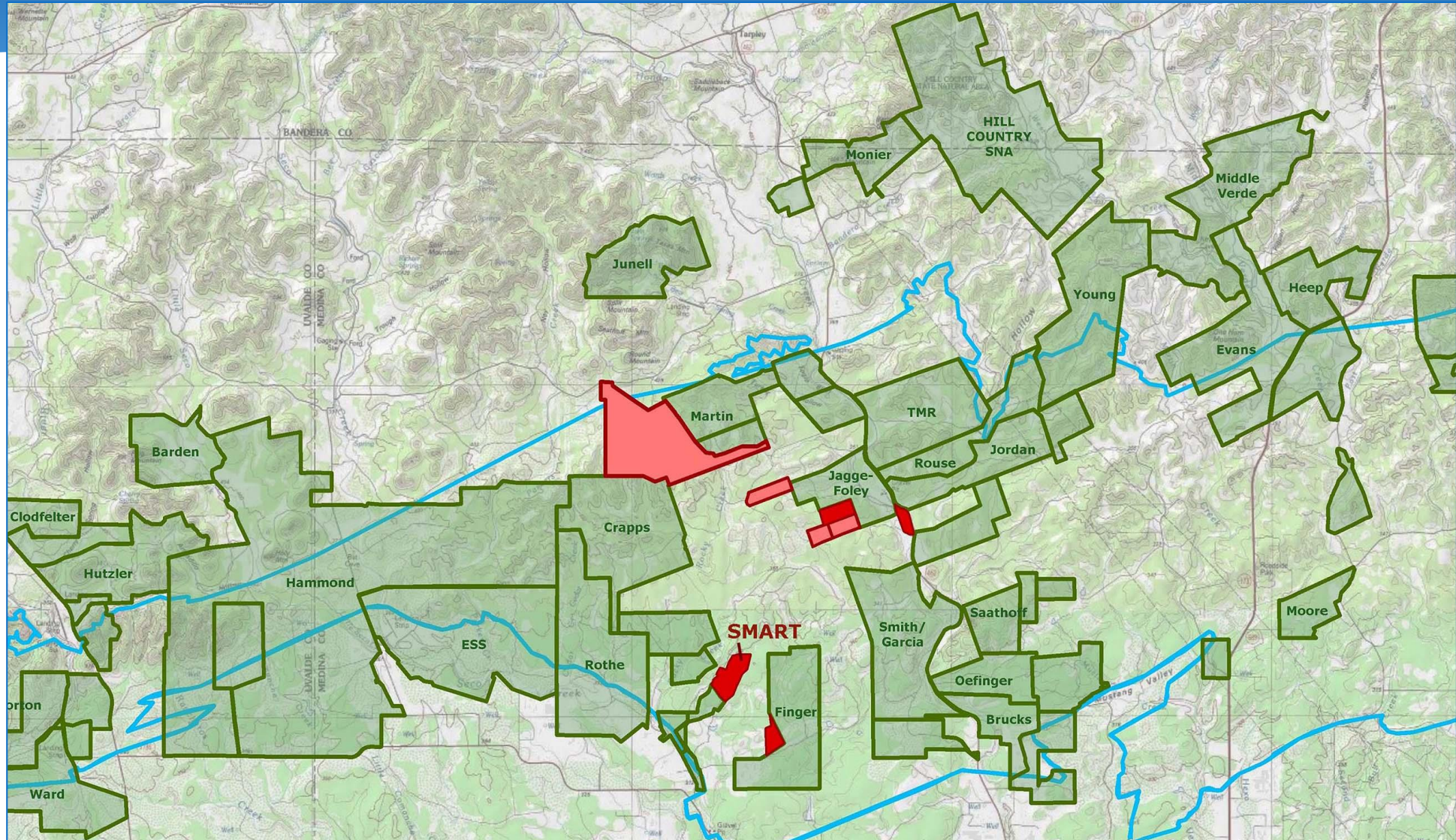


Hilton Ranch (190.9 Acres) Bexar/Medina Counties

- Contains section of San Geronimo Creek
- GA found high for water quality and high/very high for quantity
- Contiguous with McNeel and Hill/Gallagher Ranch easements
- **Requesting final approval**



Smart Ranch (217.4 Acres) Medina County

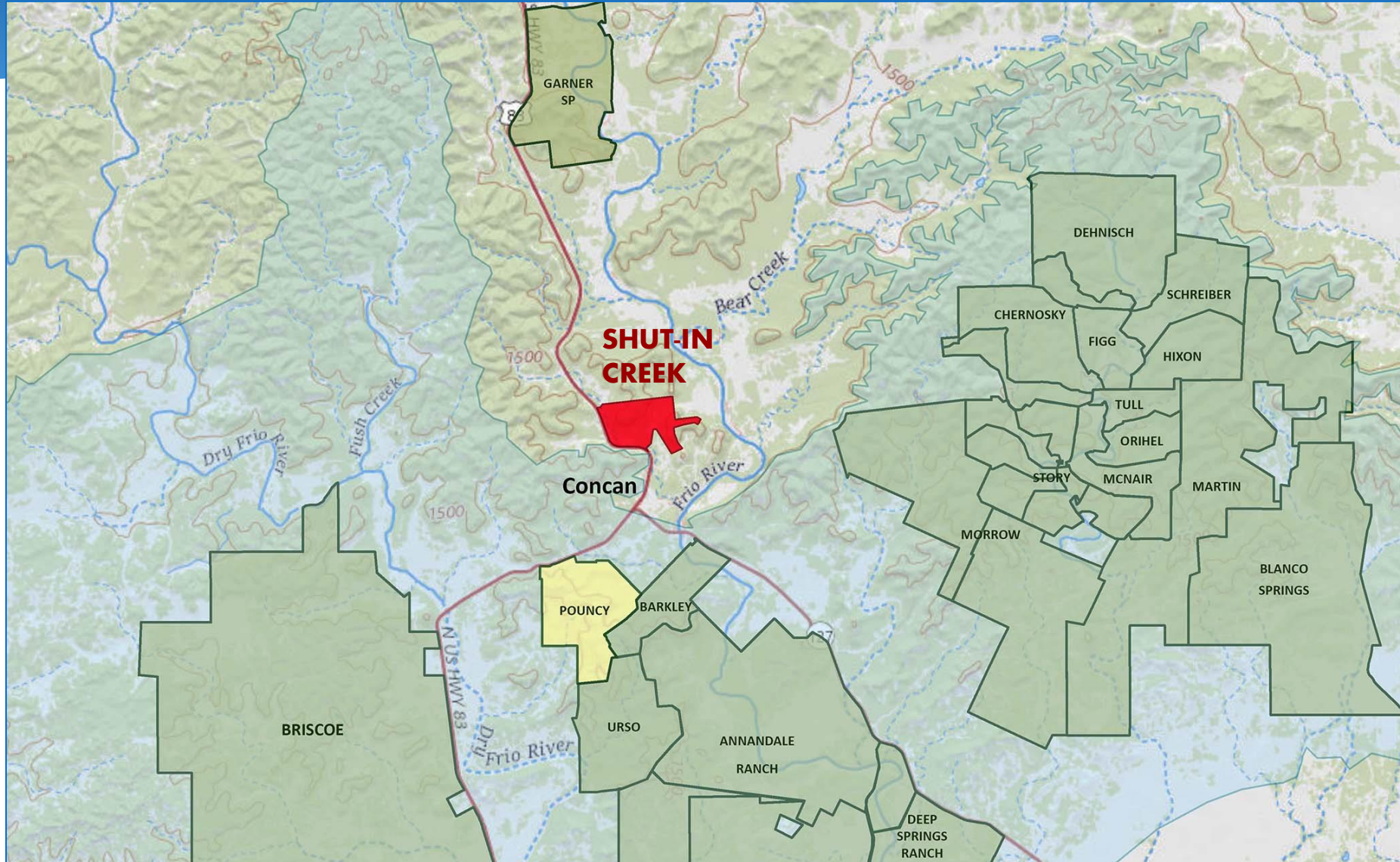


Smart Ranch (218 Acres) Medina County

- Contiguous with existing Bendele easements; near others (Finger, Saunders, Tschirhart)
- GA found high for water quality and quantity
- **Requesting final approval**



Shut-in Creek Ranch LLC (431.73 Acres) Uvalde County

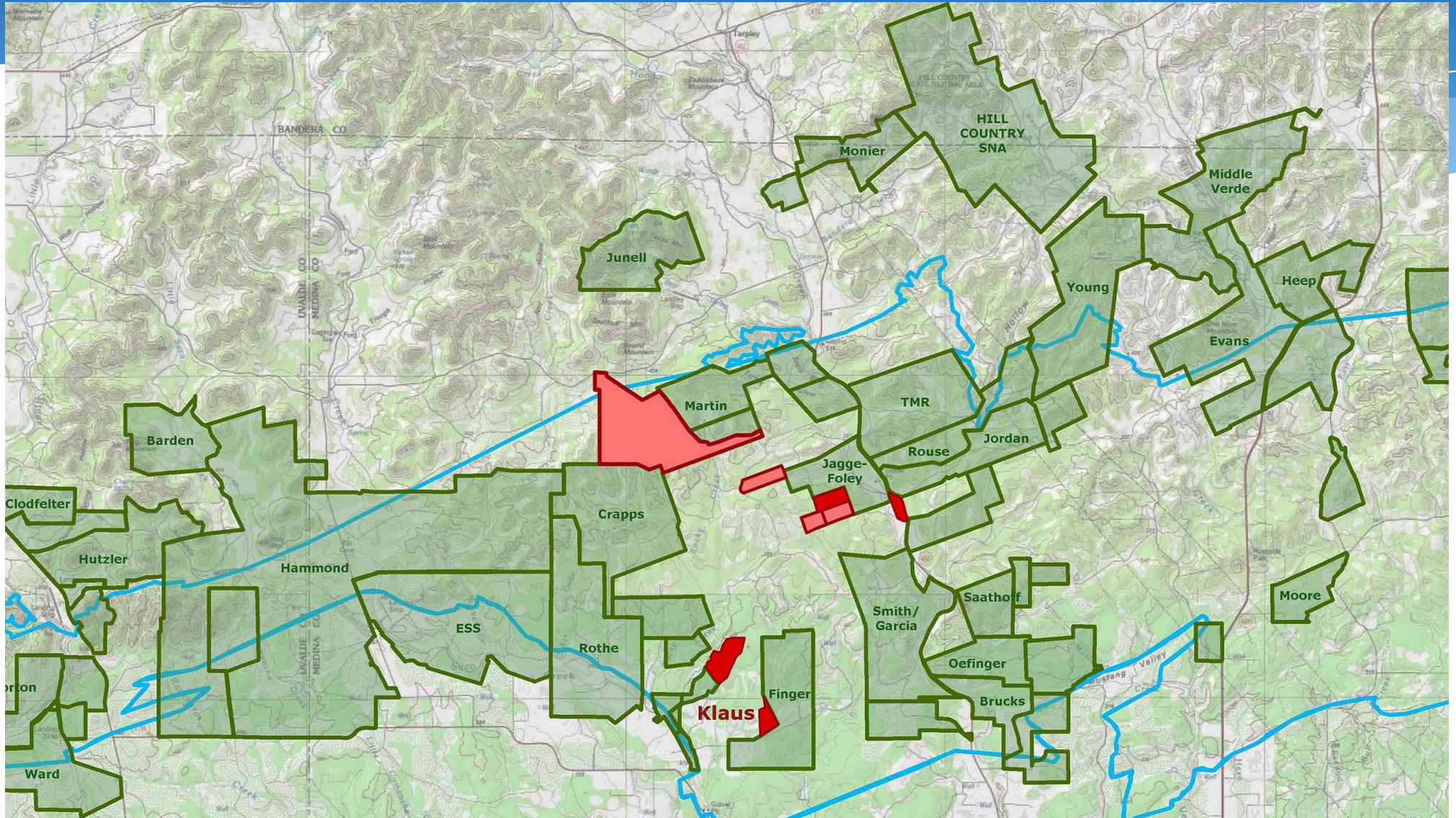


Shut-in Creek Ranch LLC (431.73 Acres) Uvalde County

- In Concan; contains spring, Shut-in Creek drainage
- EAA found overall recharge moderate to high, water quality very high
- Top 20% in model
- **Requesting final approval**



Klaus Ranch (97.13 Acres) Medina County



Klaus Ranch (97.13 Acres) Medina County

- GA found high water quality and moderate quantity benefit
- Contiguous with Finger Ranch
- **Requesting final approval**

