

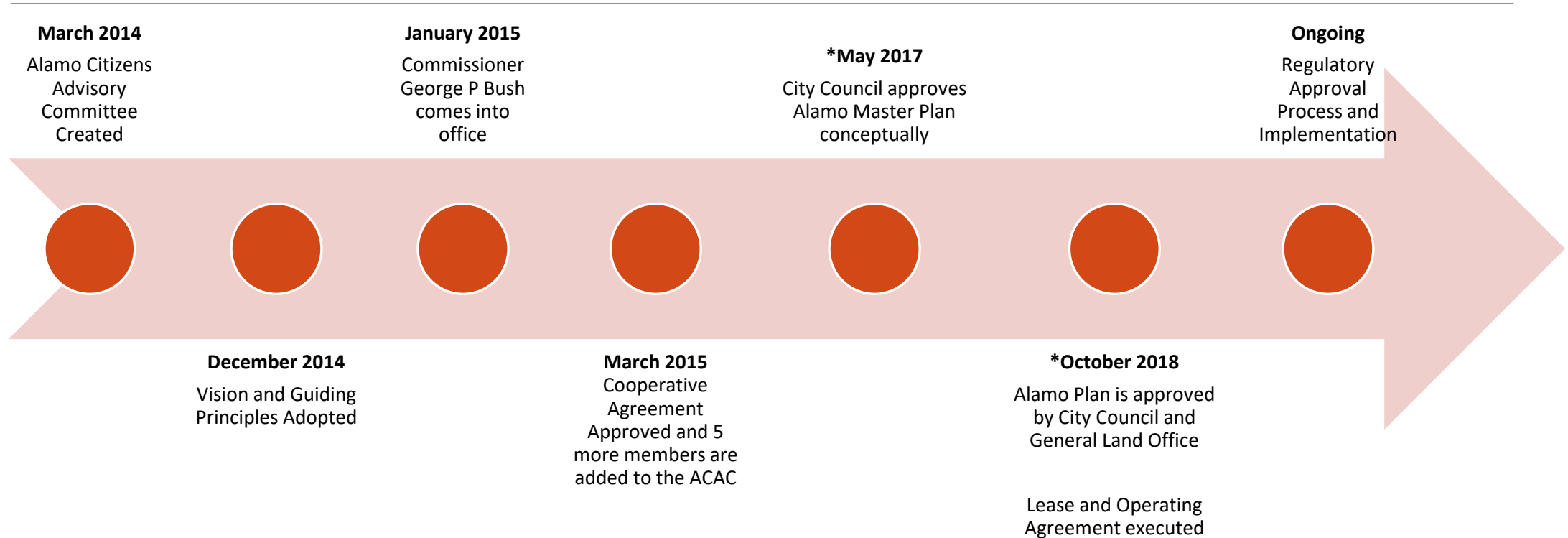
The Alamo Plan

September 2020

The Alamo Trust, Inc.
City of San Antonio
Texas General Land Office



History and Timeline



*Public Engagement and Stakeholder Coordination

What's different and why now?



VISION

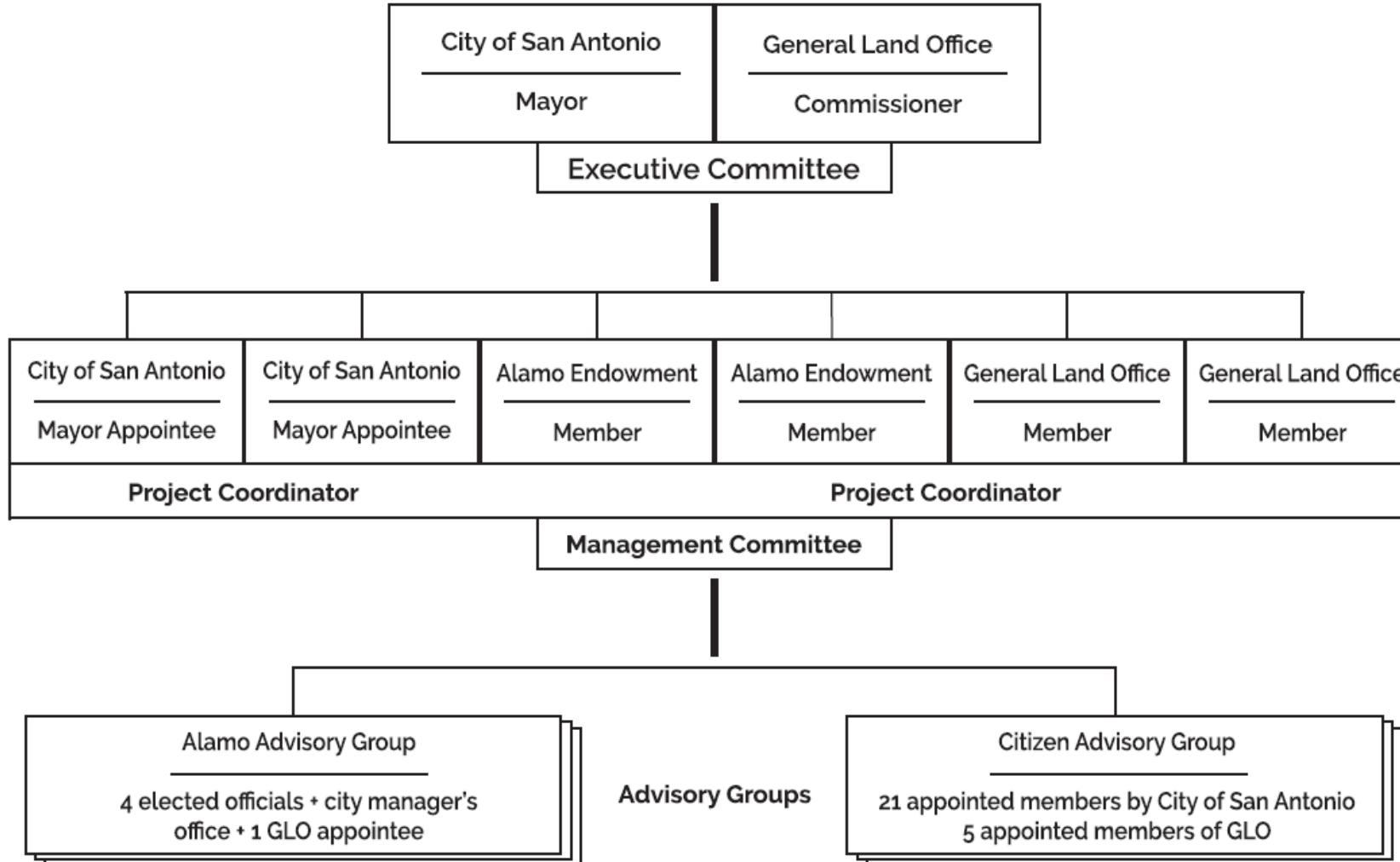
- Engage
- Tell the Story of the Battle
- Include and Interpret
- In Depth History

GUIDING PRINCIPLES

Entire Story
Accessibility
Visitor Experience
Connectivity
Balance
Continuum of History
Unified Leadership
Preservation and Interpretation



Exhibit C
The Alamo
 Cooperative Agreement



Ground Lease and Management Agreement

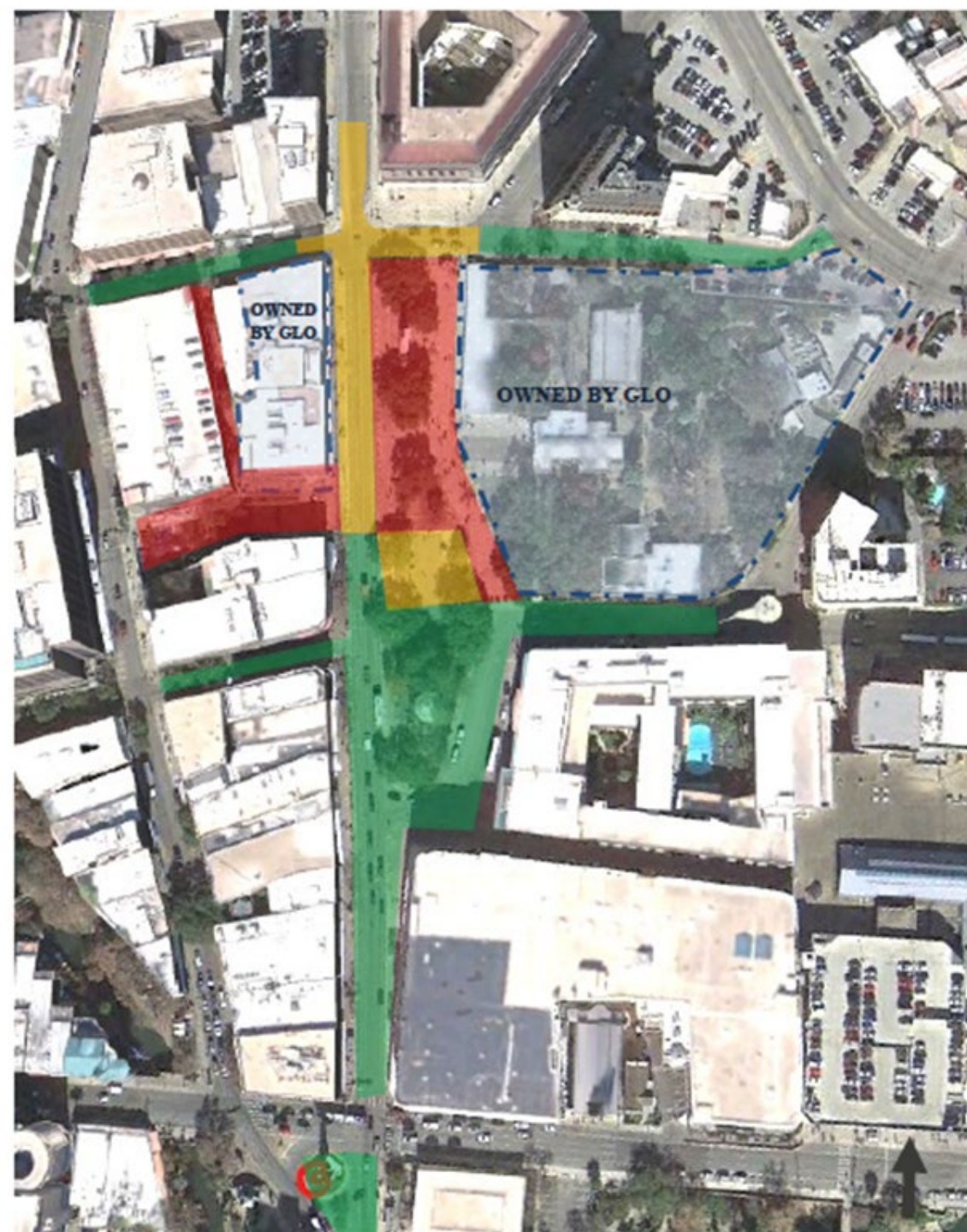
Between the City and GLO.

50 years with two 25-year extensions.

Requires the Plaza area remain open, accessible, and free of charge to the public.

Mandates high quality programming and services that enhances the historic and cultural significance of the site to include maintenance, custodial, and security.

Assigns project management authority to the GLO for the construction and implementation of the approved Alamo Plan.



Funding

State of Texas - \$106 Million

- Building Acquisition
- Church and Long Barrack

City of San Antonio - \$38 Million

- Phase 1 Alamo Plaza
- Public realm improvements

Alamo Foundation - \$200 Million

- Museum and Visitor Center
- Historic Footprint



Alamo Plan Public Involvement

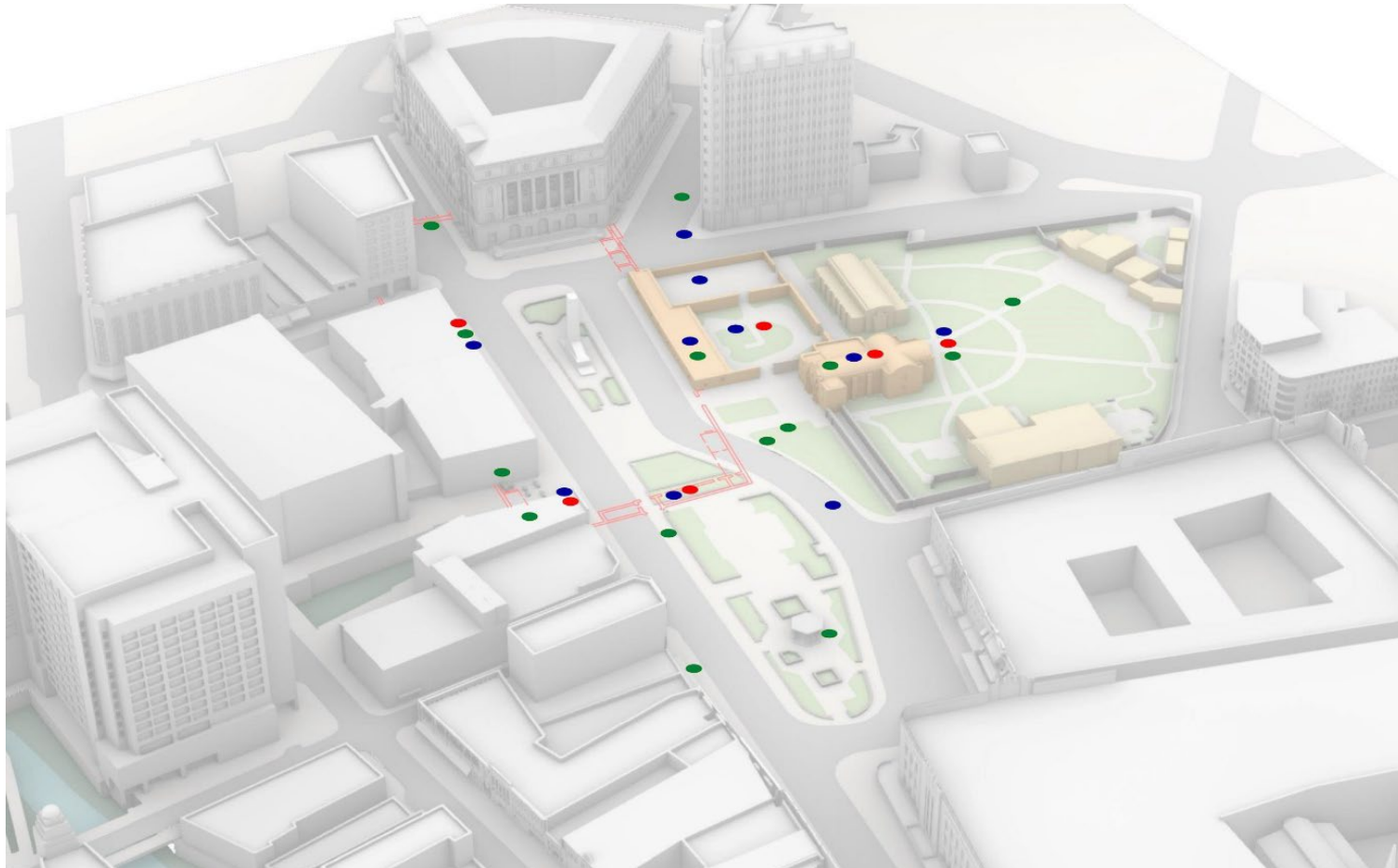
Over six years of extensive public engagement and endorsement

- Public Meetings in San Antonio 12
- Public Meetings Across Texas 13
- Stakeholder Meetings 200+
- Advisory Committee Workshops 19
 - * Unanimous Approval
- Brand Assessment Participants. . . 2,000+

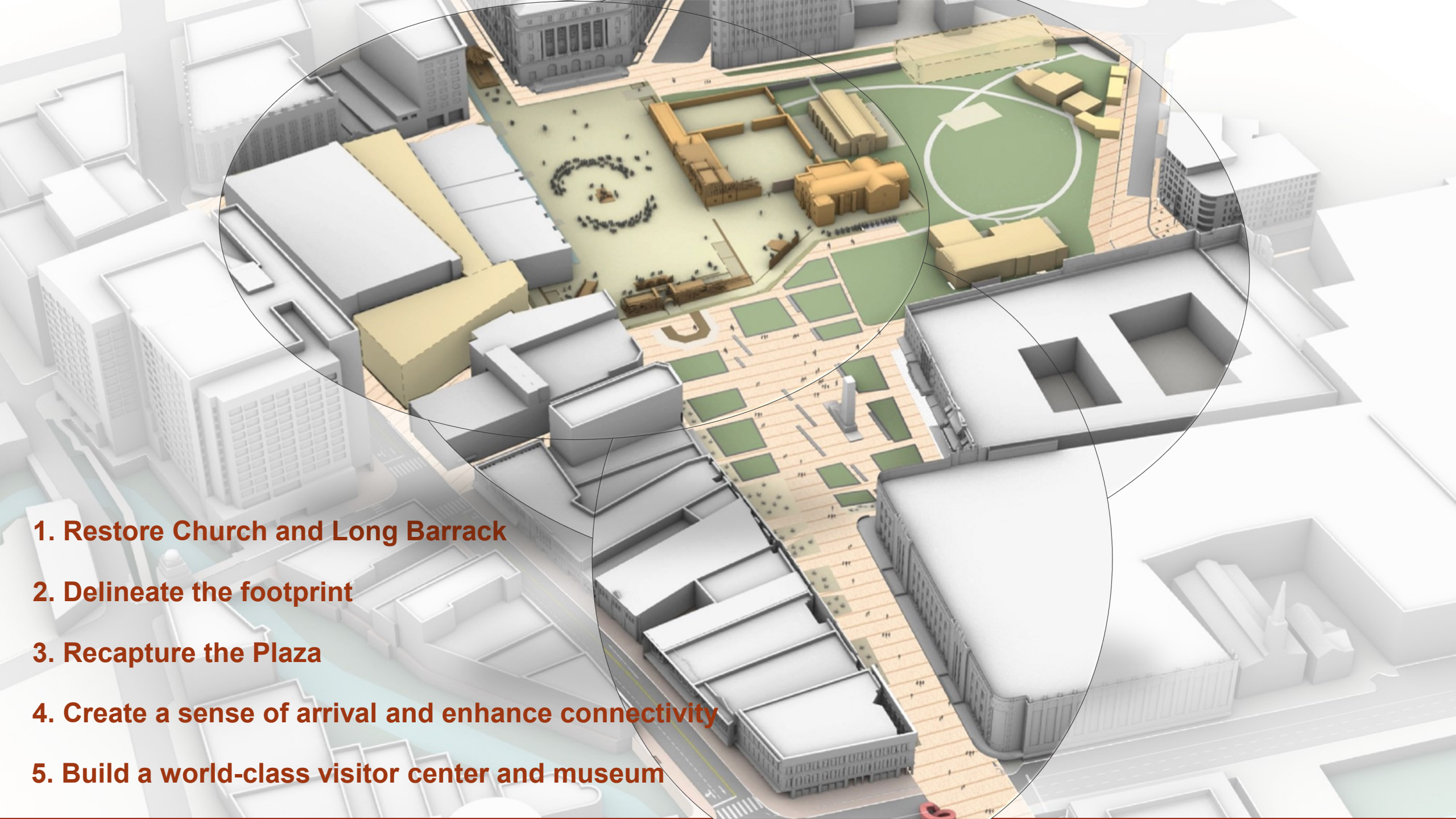
- Visitor Evaluations 200+
- City Council Briefings 9
 - * Conceptual Approval and Final Approval
- San Antonio Regulatory Approvals
 - * Historic and Design Review Commission
 - * Planning Commission
 - * Development Services Department

300+ Years of Layered History

Mission de Valero, The Alamo



- MISSION DE VALERO
1519 - 1793
- BATTLE OF THE ALAMO
+ TEXAS REVOLUTION
1793 - 1836
- ALAMO: RUIN TO ICON
1836 - TODAY



1. Restore Church and Long Barrack

2. Delineate the footprint

3. Recapture the Plaza

4. Create a sense of arrival and enhance connectivity

5. Build a world-class visitor center and museum

Repair the Church and Long Barrack

Alamo Historic Structures are Falling Apart

1) Roof and Wall Repairs

- Necessary to prevent further erosion and damage
- Implement comprehensive moisture mitigation measures
- Alamo roof may need replacement



2) Exterior Wall Foundations

- Archaeological investigations needed for load bearing masonry walls and foundations
- Structural stabilization of below grade foundations required to ensure long-term conservation



Build a World Class Museum and Visitor Center

Crockett, Palace and Woolworth Buildings

John G. Waite Associates, Architects' assessment on the Alamo Plaza Buildings

- Sound structural condition
- Strong potential for continued use for new museum spaces and functions

Dr. Carey Latimore's report on the history of desegregation in San Antonio from World War II to the mid-1960's

- African American Civil Rights Movement in San Antonio is connected to the national Civil Rights Movement

Alamo Research team's report on 1960 lunch counter integration in downtown San Antonio

- Examines press coverage of cafeteria and lunch counter integration in downtown San Antonio on March 16, 1960 and the ongoing debate about how those events were documented

All studies will inform the design and development of the Museum and Visitor Centre

Create a Sense of Arrival and Enhance Connectivity

Phase 1 – Alamo Plaza



Phase 1 Alamo Plaza/Cenotaph Repair and Relocation

Approval Process

City

- October 2018 City Council Approval
- August 2019 ACAC Briefing
- October 2019 Council Committee Briefing
- November 2019 ACAC Briefing
- December 2019 HDRC Approval

State

- October 2018 General Land Office Approval
- January 2020 THC consideration (tabled)
- March 2020 THC consideration (cancelled)
- June 2020 THC Consideration (moved)
- September 2020 THC Consideration (denied)

Status

- Phase 1 – Alamo Plaza is designed and assumes the cenotaph is the focal point.
- The Museum and Visitor Center may not happen or will be delayed. The recaptured historic mission plaza was to serve as part of the museum and provide for an outdoor space that accommodates diverse programming.
 - Alamo Foundation members have resigned



Discussion

- The Alamo Plan that was approved by City Council cannot be implemented unless the timelines are adjusted.
- The partners are committed to the Vision and Guiding Principles and to continued cooperation.
- The parties understand that any path forward will require a change to the lease and management agreement.
- A mutually agreed wind-down of the lease and management agreement remains an option.





THE ALAMO PLAN