

# HISTORIC AND DESIGN REVIEW COMMISSION

December 02, 2020

**HDRC CASE NO:** 2020-521  
**ADDRESS:** 173 LOVERA BLVD  
**LEGAL DESCRIPTION:** NCB 9003 BLK 15 LOT 69 AND 70  
**ZONING:** R-4, H  
**CITY COUNCIL DIST.:** 1  
**DISTRICT:** Olmos Park Terrace Historic District  
**APPLICANT:** Anne Noel/NOEL ANNE ELIZABETH & HERNANDEZ ROLAND RENE JR  
**OWNER:** Anne Noel/NOEL ANNE ELIZABETH & HERNANDEZ ROLAND RENE JR  
**TYPE OF WORK:** Fenestration modifications  
**APPLICATION RECEIVED:** November 07, 2020  
**60-DAY REVIEW:** Not Applicable Due to City Council Emergency Orders  
**CASE MANAGER:** Rachel Rettaliata  
**REQUEST:**

The applicant is requesting a Certificate of Appropriateness for approval to remove one (1) window that faces Howard Street and enclose the opening with siding.

## APPLICABLE CITATIONS:

*Historic Design Guidelines, Chapter 2, Exterior Maintenance and Alterations*

### 1. Materials: Woodwork

#### A. MAINTENANCE (PRESERVATION)

- i. *Inspections*—Conduct semi-annual inspections of all exterior wood elements to verify condition and determine maintenance needs.
- ii. *Cleaning*—Clean exterior surfaces annually with mild household cleaners and water. Avoid using high pressure power washing and any abrasive cleaning or stripping methods that can damage the historic wood siding and detailing.
- iii. *Paint preparation*—Remove peeling, flaking, or failing paint surfaces from historic woodwork using the gentlest means possible to protect the integrity of the historic wood surface. Acceptable methods for paint removal include scraping and sanding, thermal removal, and when necessary, mild chemical strippers. Sand blasting and water blasting should never be used to remove paint from any surface. Sand only to the next sound level of paint, not all the way to the wood, and address any moisture and deterioration issues before repainting.
- iv. *Repainting*—Paint once the surface is clean and dry using a paint type that will adhere to the surface properly. See *General Paint Type Recommendations* in Preservation Brief #10 listed under Additional Resources for more information.
- v. *Repair*—Repair deteriorated areas or refasten loose elements with an exterior wood filler, epoxy, or glue.

#### B. ALTERATIONS (REHABILITATION, RESTORATION, AND RECONSTRUCTION)

- i. *Facade materials*—Avoid removing materials that are in good condition or that can be repaired in place. Consider exposing original wood siding if it is currently covered with vinyl or aluminum siding, stucco, or other materials that have not achieved historic significance.
- ii. *Materials*—Use in-kind materials when possible or materials similar in size, scale, and character when exterior woodwork is beyond repair. Ensure replacement siding is installed to match the original pattern, including exposures. Do not introduce modern materials that can accelerate and hide deterioration of historic materials. Hardiboard and other cementitious materials are not recommended.
- iii. *Replacement elements*—Replace wood elements in-kind as a replacement for existing wood siding, matching in profile, dimensions, material, and finish, when beyond repair.

### 6. Architectural Features: Doors, Windows, and Screens

#### A. MAINTENANCE (PRESERVATION)

- i. *Openings*—Preserve existing window and door openings. Avoid enlarging or diminishing to fit stock sizes or air conditioning units. Avoid filling in historic door or window openings. Avoid creating new primary entrances or window openings on the primary façade or where visible from the public right-of-way.
- ii. *Doors*—Preserve historic doors including hardware, fanlights, sidelights, pilasters, and entablatures.
- iii. *Windows*—Preserve historic windows. When glass is broken, the color and clarity of replacement glass should match the original historic glass.
- iv. *Screens and shutters*—Preserve historic window screens and shutters.
- v. *Storm windows*—Install full-view storm windows on the interior of windows for improved energy efficiency. Storm window may be installed on the exterior so long as the visual impact is minimal and original architectural details are not obscured.

## **B. ALTERATIONS (REHABILITATION, RESTORATION, AND RECONSTRUCTION)**

- i. *Doors*—Replace doors, hardware, fanlight, sidelights, pilasters, and entablatures in-kind when possible and when deteriorated beyond repair. When in-kind replacement is not feasible, ensure features match the size, material, and profile of the historic element.
- ii. *New entrances*—Ensure that new entrances, when necessary to comply with other regulations, are compatible in size, scale, shape, proportion, material, and massing with historic entrances.
- iii. *Glazed area*—Avoid installing interior floors or suspended ceilings that block the glazed area of historic windows.
- iv. *Window design*—Install new windows to match the historic or existing windows in terms of size, type, configuration, material, form, appearance, and detail when original windows are deteriorated beyond repair.
- v. *Muntins*—Use the exterior muntin pattern, profile, and size appropriate for the historic building when replacement windows are necessary. Do not use internal muntins sandwiched between layers of glass.
- vi. *Replacement glass*—Use clear glass when replacement glass is necessary. Do not use tinted glass, reflective glass, opaque glass, and other non-traditional glass types unless it was used historically. When established by the architectural style of the building, patterned, leaded, or colored glass can be used.
- vii. *Non-historic windows*—Replace non-historic incompatible windows with windows that are typical of the architectural style of the building.
- viii. *Security bars*—Install security bars only on the interior of windows and doors.
- ix. *Screens*—Utilize wood screen window frames matching in profile, size, and design of those historically found when the existing screens are deteriorated beyond repair. Ensure that the tint of replacement screens closely matches the original screens or those used historically.
- x. *Shutters*—Incorporate shutters only where they existed historically and where appropriate to the architectural style of the house. Shutters should match the height and width of the opening and be mounted to be operational or appear to be operational. Do not mount shutters directly onto any historic wall material.

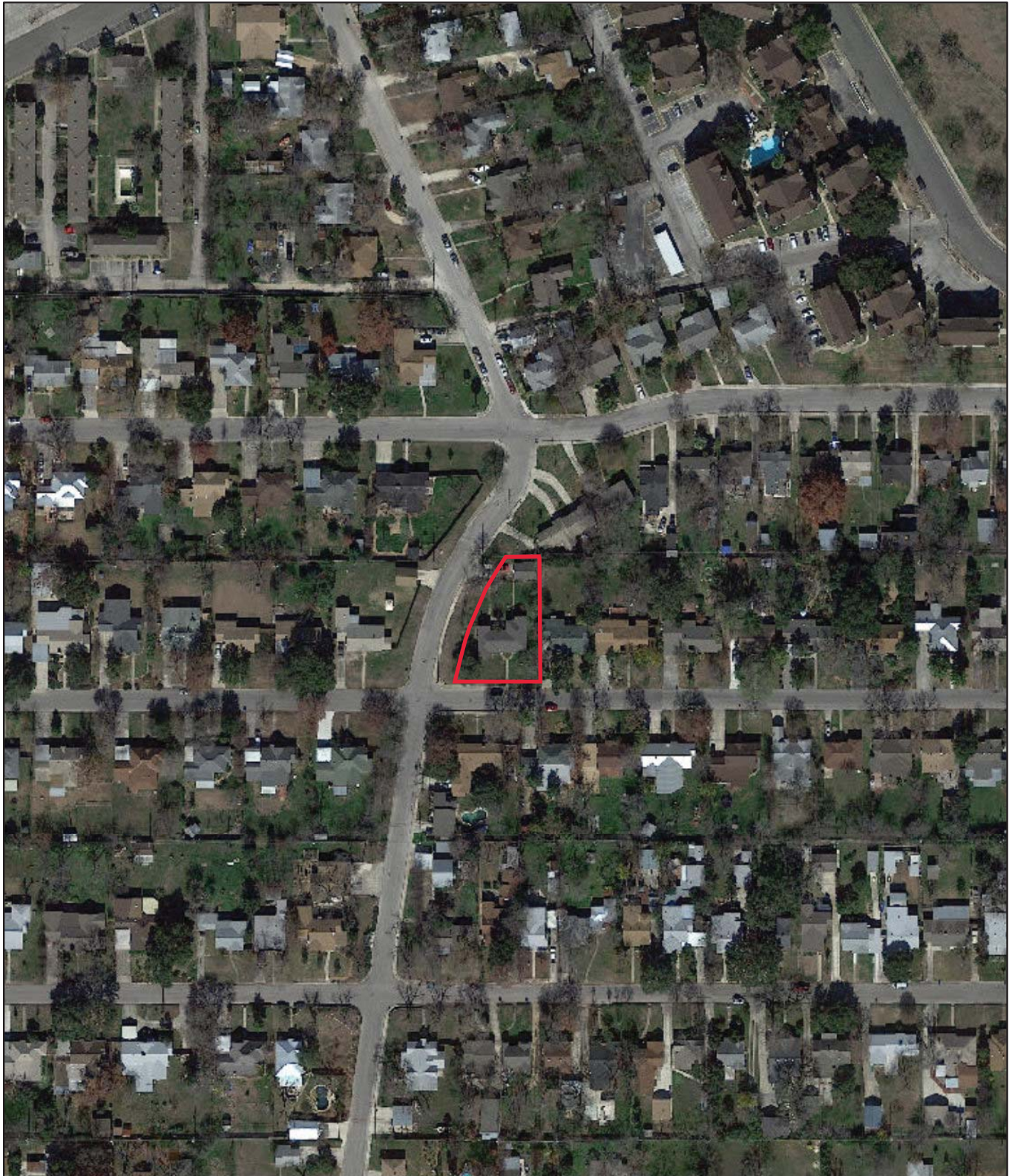
## **FINDINGS:**

- a. The structure located at 173 Lovera is a 1-story, single-family residence constructed circa 1950 in the Minimal Traditional style. The structure is not featured on the 1951 Sanborn Map. The home features a primary hip roof configuration, ganged windows, and a front gable with decorative vent detailing. The structure is contributing to the Olmos Park Terrace Historic District.
- b. **WINDOW REMOVAL** – The applicant has proposed to remove the existing window on the west elevation facing Howard Street. The applicant has proposed to fill in the existing window opening with siding to match existing. Guidelines 6.A.i for Exterior Maintenance and Alterations states that filling in historic door or window openings should be avoided. However, the existing window is a non-historic aluminum frame window and the primary structure was constructed later than the neighboring structures. Although the existing window faces Howard Street, staff does not find that the removal of the window will negatively impact the integrity of the primary structure. Staff finds the proposal appropriate.

## **RECOMMENDATION:**

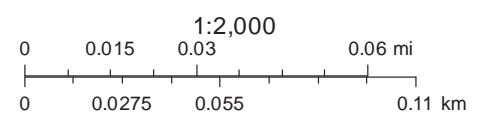
Staff recommends approval based on findings a through b.

# City of San Antonio One Stop



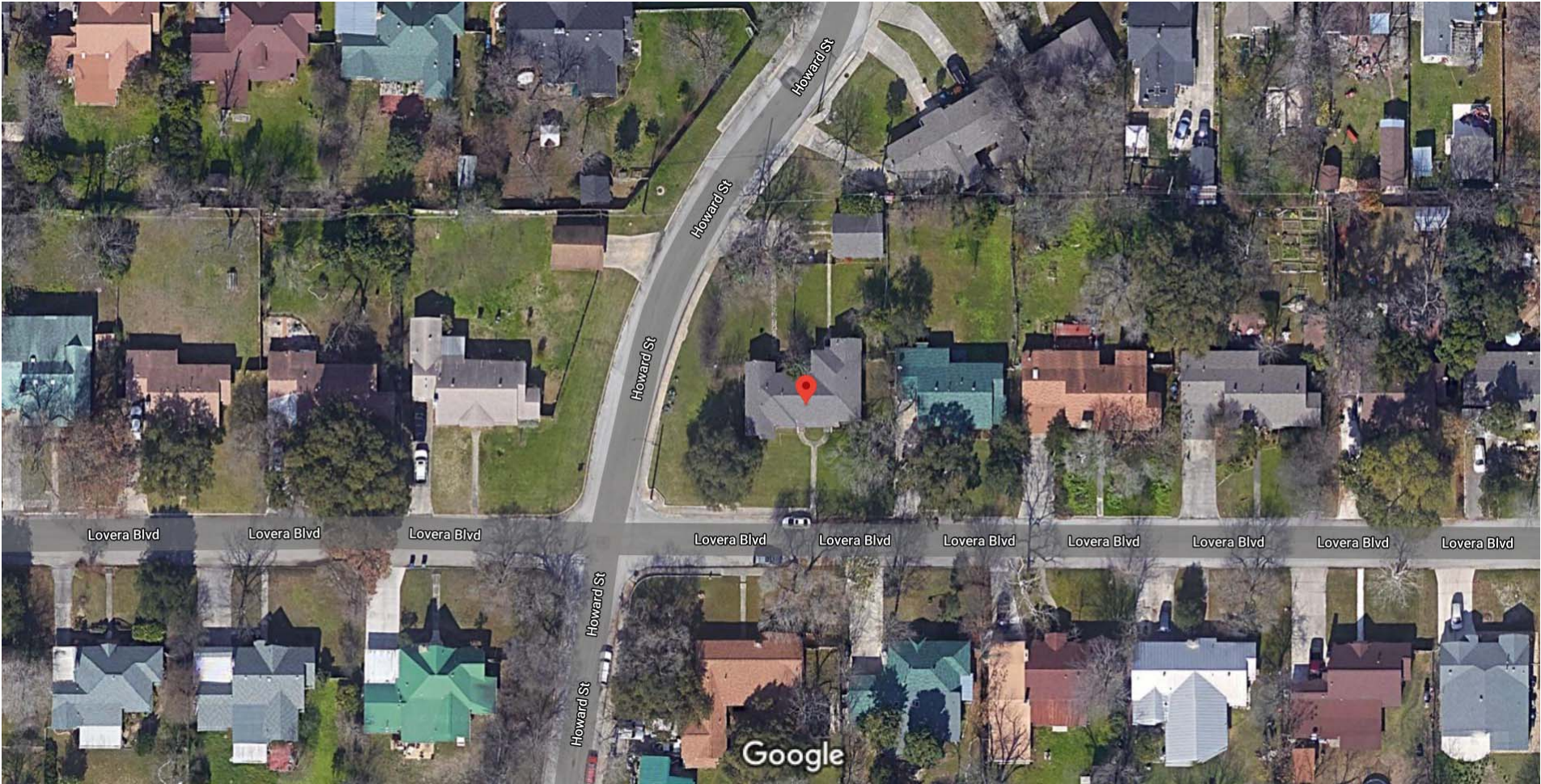
November 18, 2020

— User drawn lines





Google Maps 173 Lovera Blvd



Imagery ©2020 CAPCOG, Maxar Technologies, Map data ©2020 20 ft



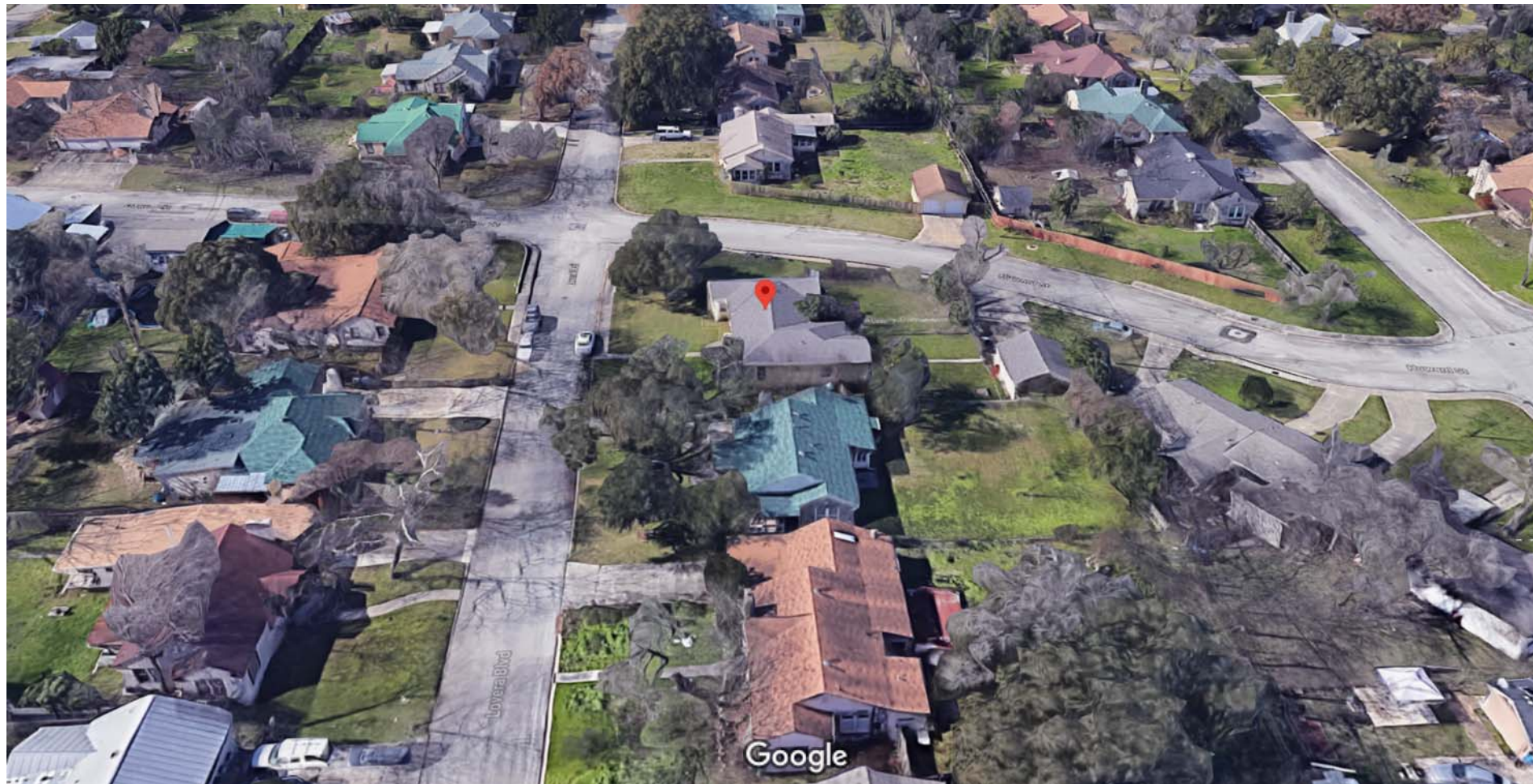
Google Maps 173 Lovera Blvd



Imagery ©2020 Google, Map data ©2020 20 ft



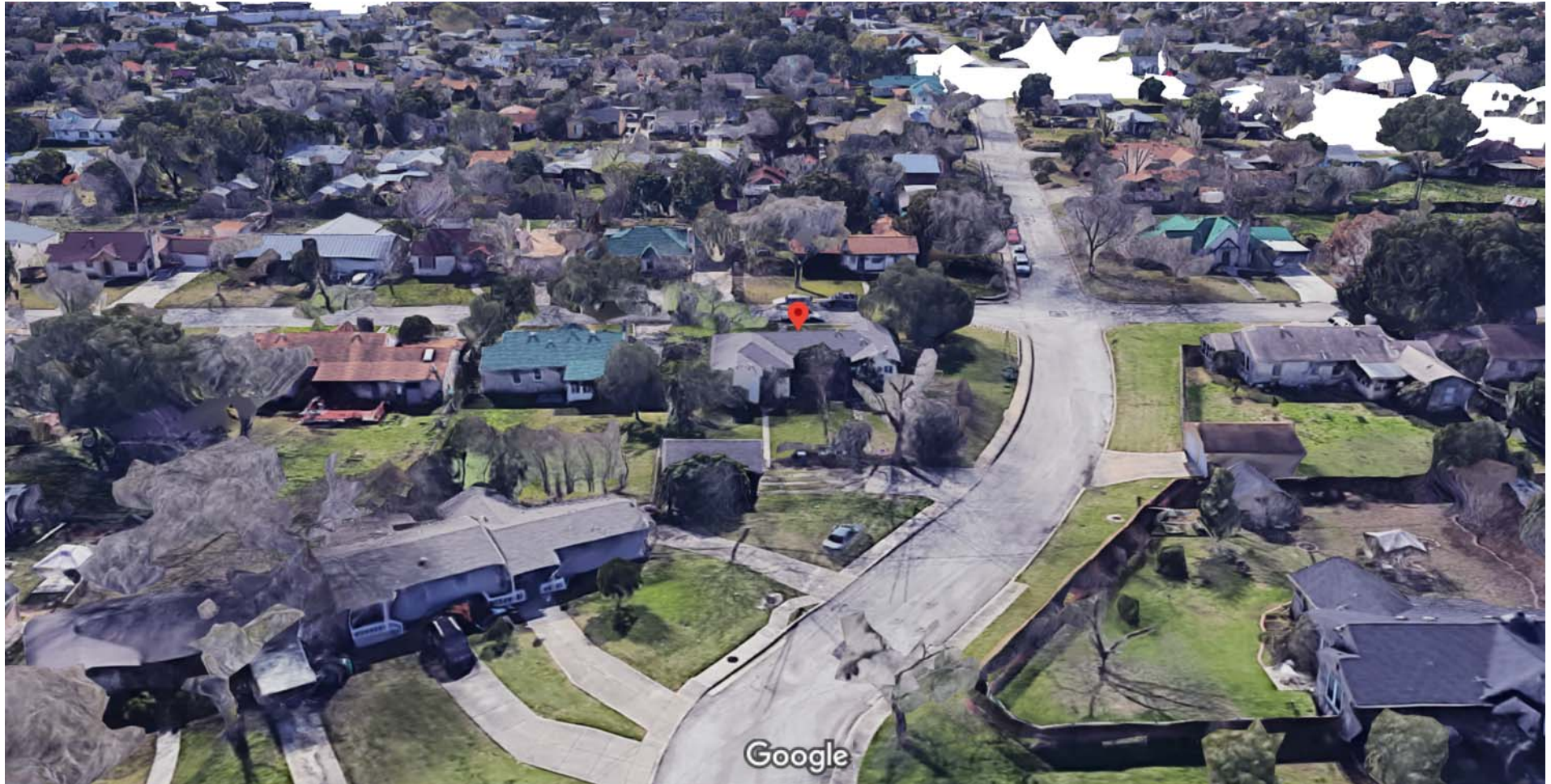
Google Maps 173 Lovera Blvd



Imagery ©2020 Google, Map data ©2020 20 ft



Google Maps 173 Lovera Blvd



Imagery ©2020 Google, Data SIO, NOAA, U.S. Navy, NGA, GEBCO, Landsat / Copernicus, Map data ©2020 20 ft



Google Maps 173 Lovera Blvd



Imagery ©2020 Google, Data SIO, NOAA, U.S. Navy, NGA, GEBCO, Data LDEO-Columbia, NSF, NOAA, Landsat / Copernicus, Map data ©2020 20 ft



564

(545)

"A"

MAY 1949

