



CITY OF SAN ANTONIO  
**EDWARDS AQUIFER**  
PROTECTION PROGRAM

# Conservation Advisory Board

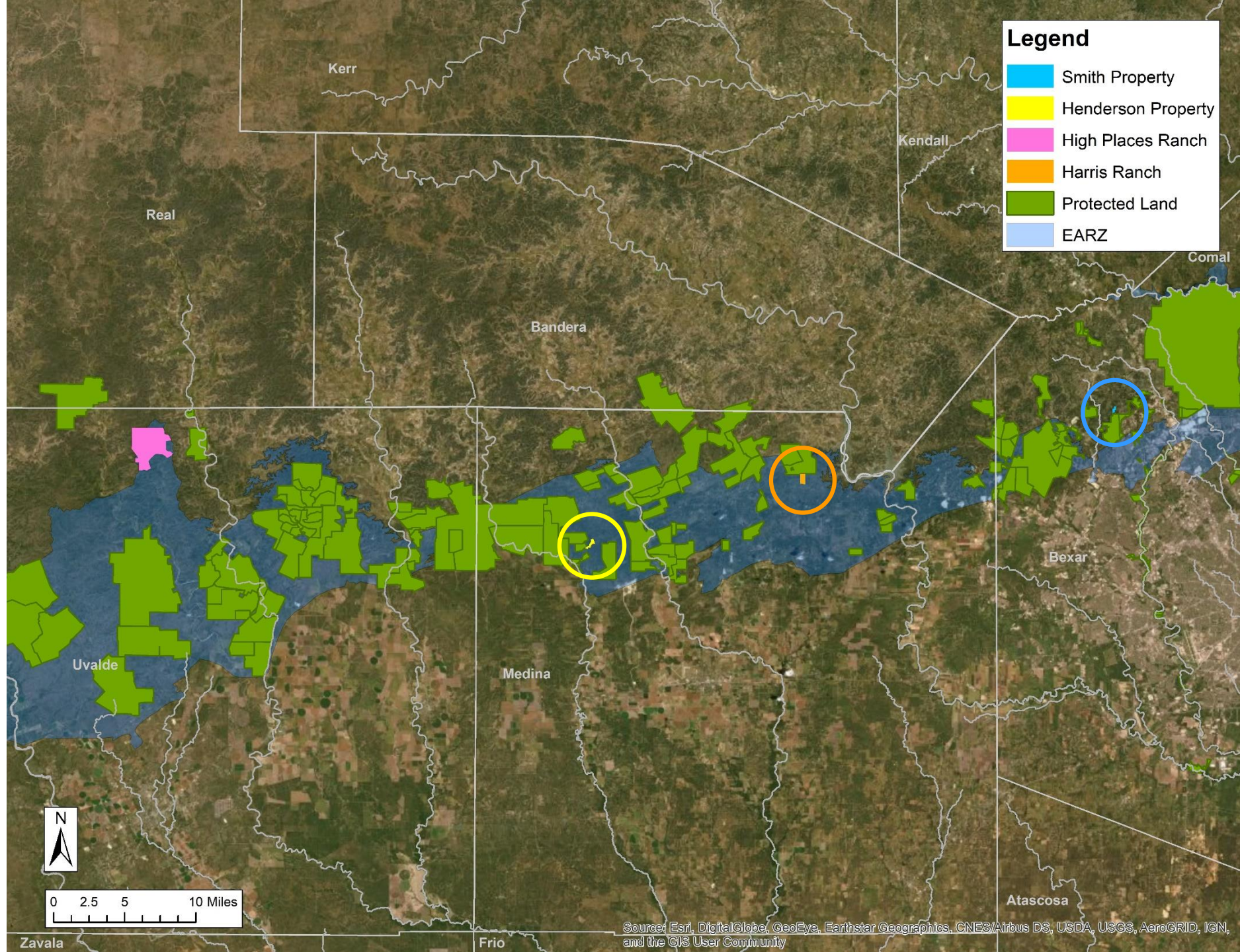
## December 2, 2020



GREEN  
SPACES  
ALLIANCE  
OF SOUTH TEXAS

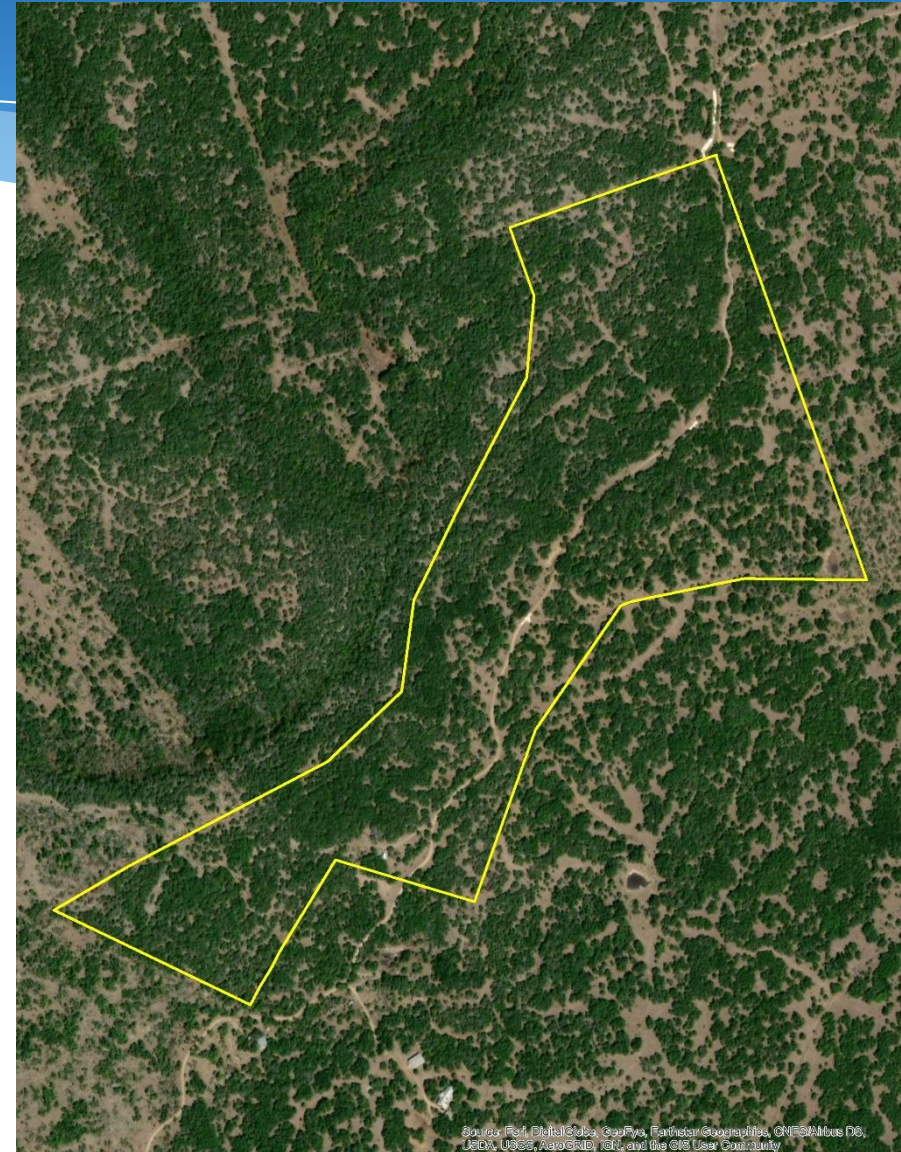
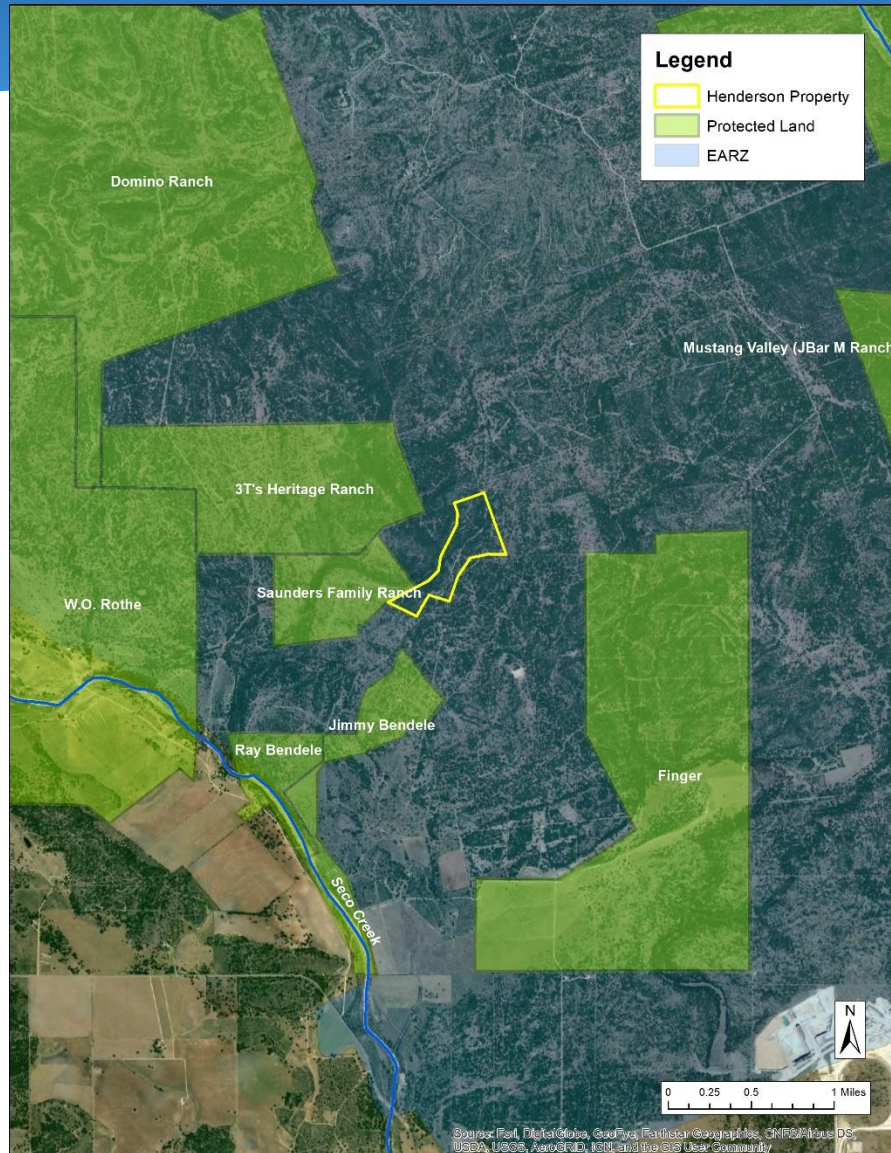
Henderson Ranch  
Highplaces Ranch







# Henderson Property (~100 acres) Medina County



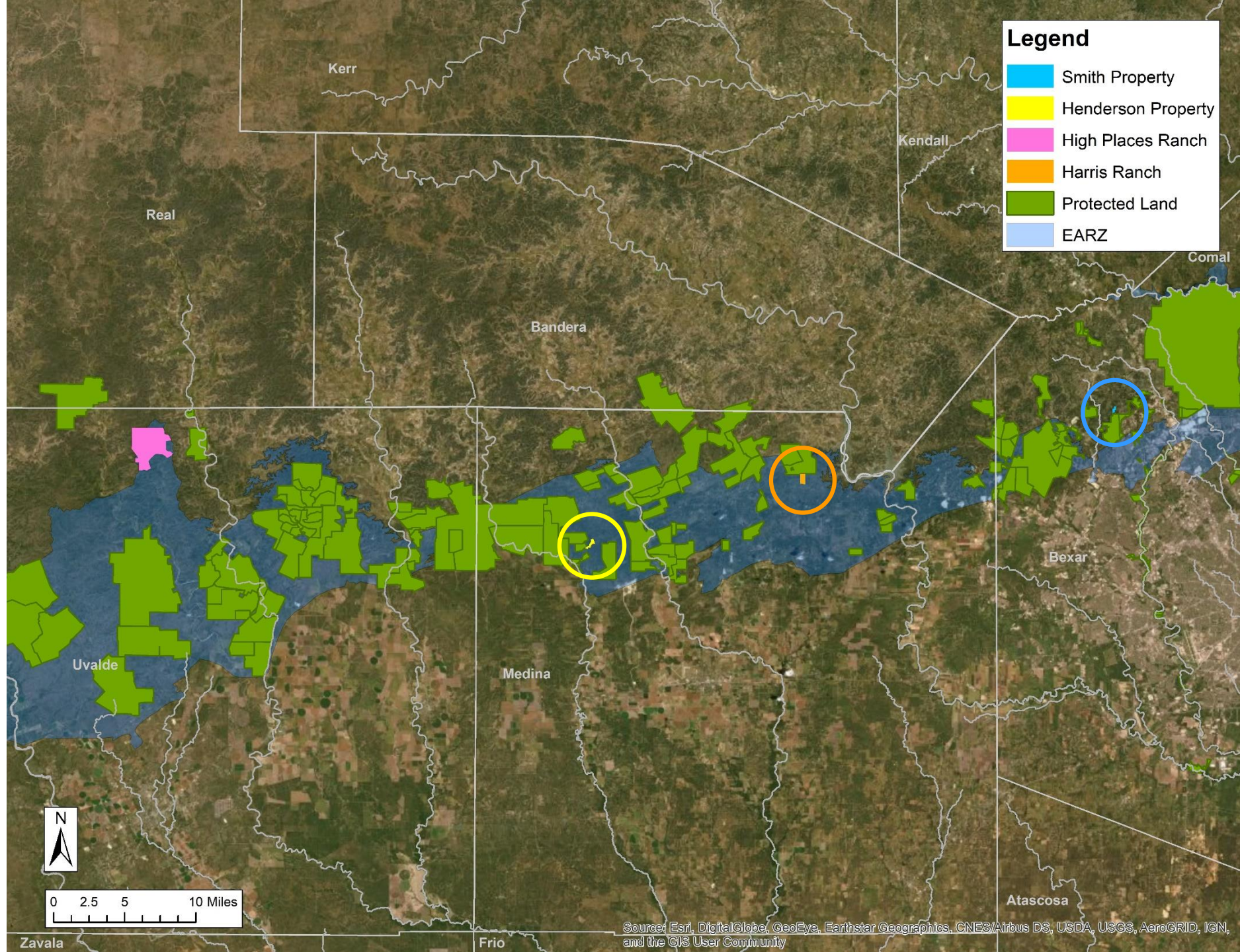


## Henderson Property (~100 acres) Medina County

- 100% in EARZ
- Top 50% of SET model
- Adjacent to Saunders CE, and near several others
- Seco Creek watershed
- High water quantity
- High water quality
- Requesting Stage 2 Approval

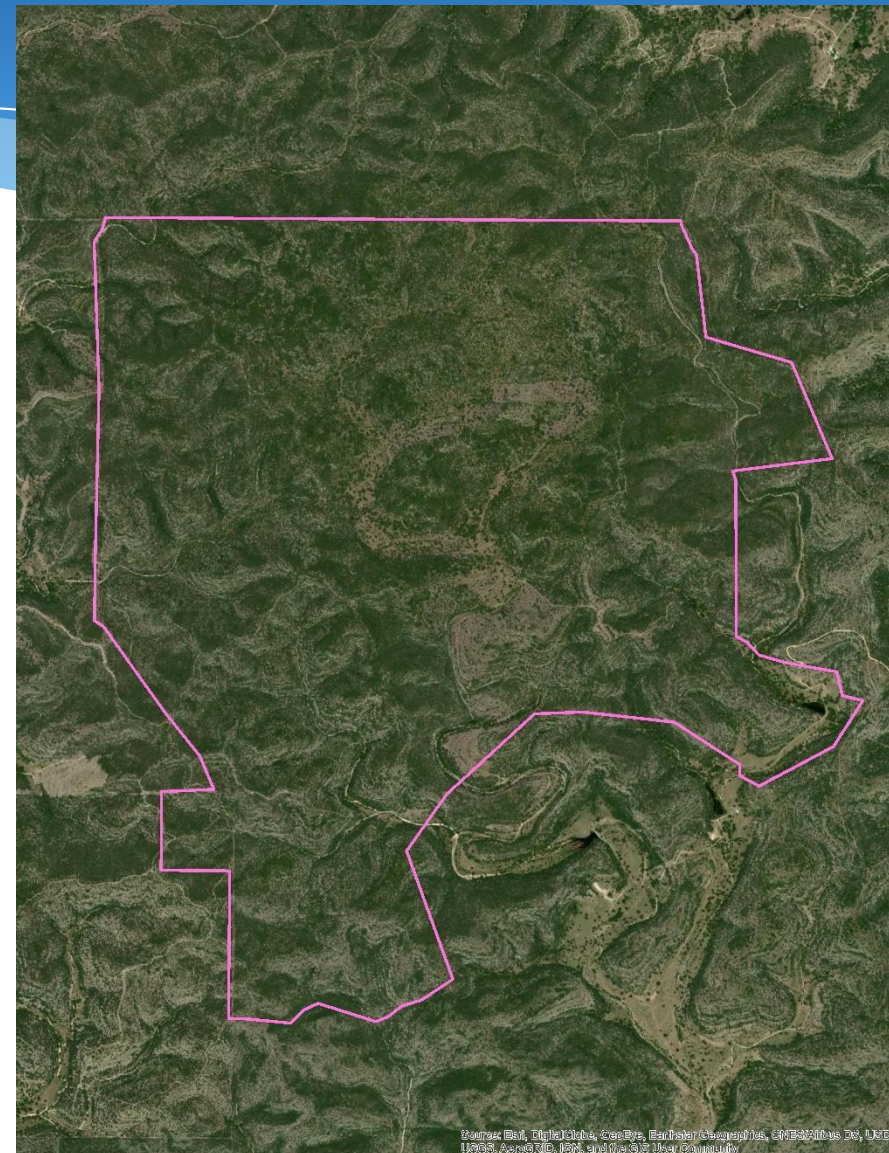
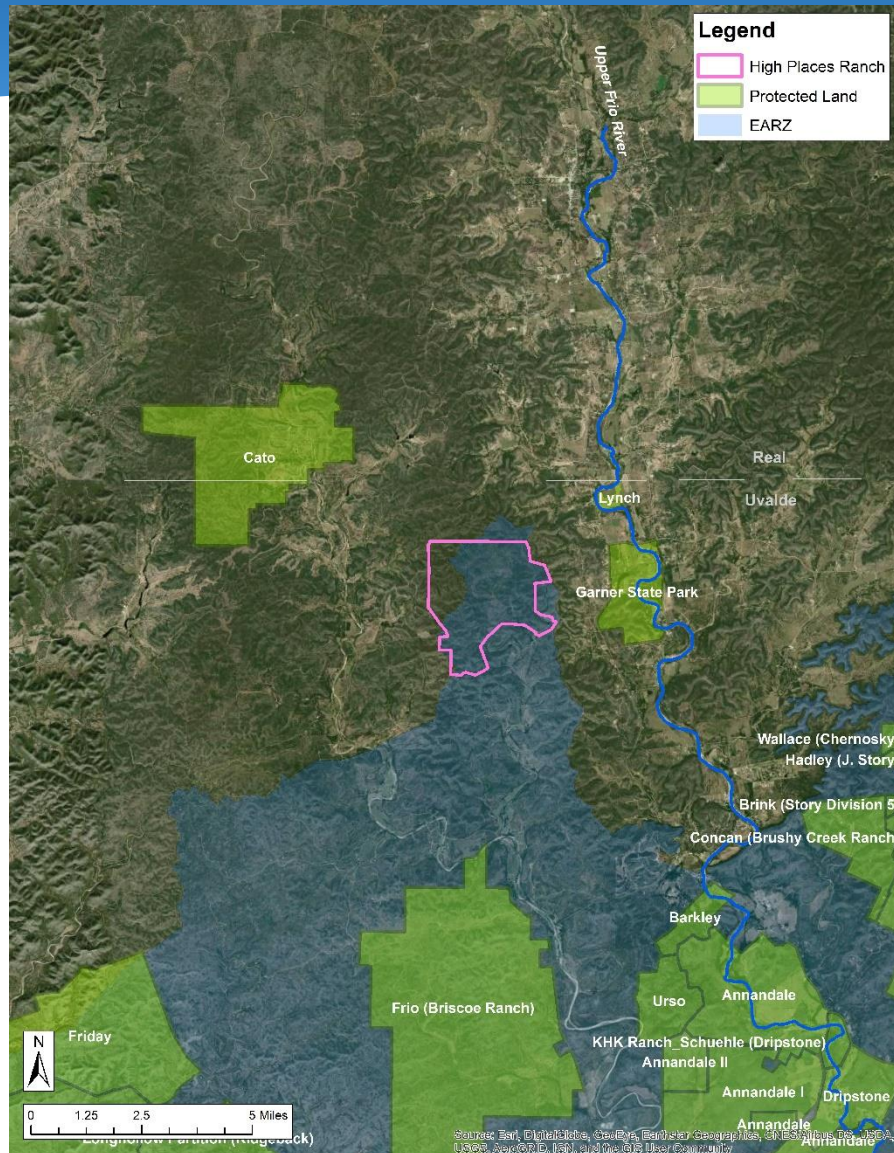








# High Places Ranch (3,656 acres) Uvalde County





## High Places Ranch (3,656 acres) Uvalde County

- Approx. 75% in EARZ
- Near Garner State Park and Cato CE
- Top 20% of SET model
- Upper Frio River watershed
- High water quantity
- High water quality
- Requesting Stage 1-B Approval





## High Places Ranch (3,656 acres) Uvalde County

