

City of San Antonio

SA CLIMATE READY

Joint Advisory Committee Orientation



November 17, 2020
6-8:30 PM
Webex

Welcome!

ft. Councilwoman Sandoval



SA
**CLIMATE
READY**

Staff & Facilitator Intros

Office of Sustainability Staff

Douglas Melnick (he/him)

Chief Sustainability Officer

Douglas.Melnick@sanantonio.gov

Julia Murphy (she/her)

Deputy Chief Sustainability Officer

Julia.Murphy@sanantonio.gov

Minerva Defee (she/her)

Climate Program Manager

Minerva.Defee@sanantonio.gov

Facilitators

Nicholas Burgett (he/him)

The Why Group

nburgett@whygroup.com

Guadalupe González (she/her)

Chief Executive Officer, The Thrive Advisory LLC

Lupita@TheThriveAdvisory.com

Agenda

ITEM	MINUTES
Welcome & Staff/Facilitator Intros	5
Land Acknowledgement	2
Public Comment	10
Introductions (Name, Pronouns, Committee, Organization)	25
Meeting Norms and Expectations <ol style="list-style-type: none"> 1. Meeting protocol 2. Committee roles and responsibilities 3. Committee coordination 	20
CAAP and Equity Overview	10
Break	5
CAAP Overview <ol style="list-style-type: none"> 1. What is it? 2. OS FY21 Work Plan & American Cities Climate Challenge (ACCC) 3. Overview on CAAP Communications and Engagement Scope of Work 	20
Reflection Exercise	30
Next Steps <ol style="list-style-type: none"> 1. Meeting schedule 2. Equity Trainings 	15
Total Time	142

Land Acknowledgement

We acknowledge with respect that the land we are on is the traditional and ancestral homeland of the Coahuiltecan, Tonkawa, and Jumanos peoples and all other tribes not explicitly stated.



San Antonio River



Phil Hardberger Park

Public Comment



SA
**CLIMATE
READY**

Introductions

Please state your:

Name*

Preferred Pronouns (i.e. she/her, he/him, they/them)*

Committee (Climate Equity or Technical and Community)

Organization or Expertise

Please update your display name with preferred name and pronouns by next meeting.
Instructions will be provided closer to the next meeting date.



Meeting Norms

1. **Stay Engaged** – stay present and pay attention even when you are shutting down
2. **Speak Your Truth** – speak truths about our experiences
3. **No Fixing** – it's important that we let each person in the room experience their own discomfort and not fix it for them
4. **Experience Discomfort** – “Learn to become comfortable with the discomfort”
5. **Take Risks** – the more you are willing to risk, the more potential you have to learn
6. **Listen for Understanding** – try and understand where another person is coming from but be careful not to compare your experiences with another person's
7. **Expect and Accept Non-Closure** – these are process conversations where greater awareness leads to future changes

Committee Roles and Coordination

Climate Equity Advisory Committee

- 10 at-large representatives from community-based organizations and other key stakeholders representing the interests of low-income populations, communities of color, and marginalized populations, and the Chair or Vice-Chair of the Technical and Community Advisory Committee.
- Mission: provide input on the implementation of the CAAP to ensure an equity-centered approach and equitable outcomes.

Technical & Community Advisory Committee

- 17 at-large members, 5 organizational members, 1 research collaborator, and the Chair/Vice-Chair of the Climate Equity Committee.
- The Committee is designed to provide expertise, diverse perspectives, and input regarding implementation of the CAAP as the City works to achieve greenhouse gas reduction and adaptation goals.
- Mission: Advise City staff and City Council on the advancement and equity-centered implementation of the SA Climate Ready Plan, as well as related long-term sustainability plans, such as the SA Tomorrow Sustainability Plan.

Committee Coordination

- Cross-serving committee members
- Annual joint planning meetings
- Development of combined annual reports

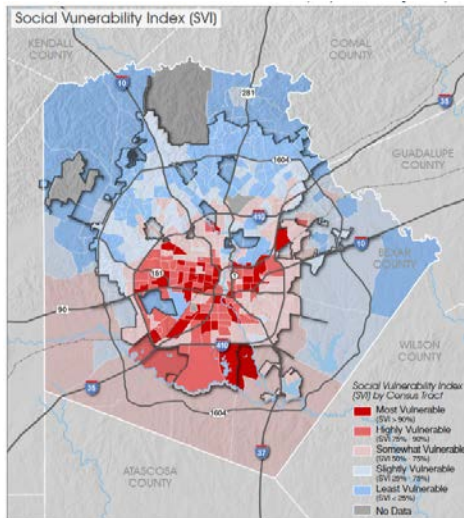
Advisory Committee Member Expectations

- **Attend and actively participate in quarterly 2 hour-long meetings.**
- **Attend annual joint CAAP advisory committee retreat.**
- **Participate in Equity training.**
- **Prepare for the quarterly meetings by reviewing the meeting agenda and completing pre-meeting homework.**
- **Alert Office of Sustainability Staff of conflicts to participation.**
- **Assist with community and stakeholder engagement.**
- **Work towards successful outcomes.**



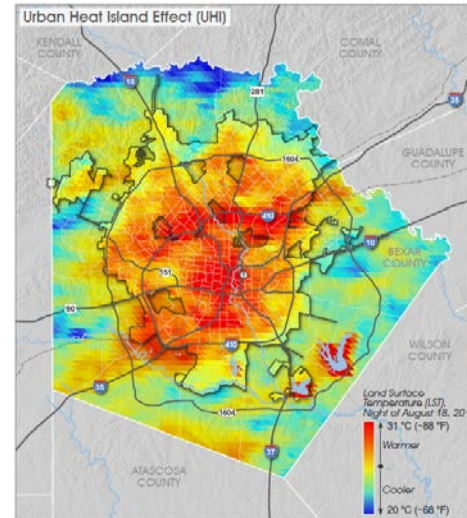
Disproportionate Impacts of Climate Change

1 Most vulnerable population



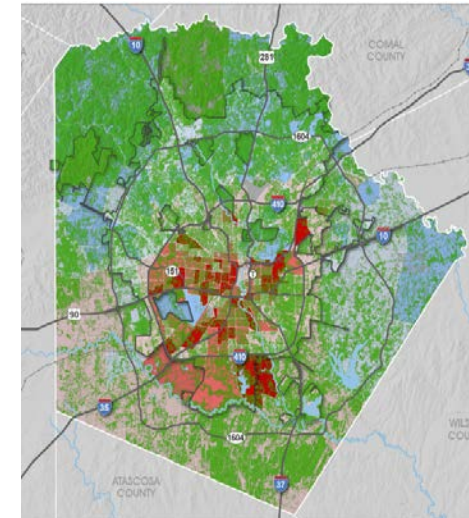
Social Vulnerability Index (SVI)

2 Hottest areas of our city



Urban Heat Island Effect (UHI)

3 Lowest area of tree canopy



Social Vulnerability Index (SVI) with Tree Canopy

The Social Vulnerability Index (SVI) helps identify communities that are most likely to need support before, during, and after a hazardous event or natural disaster, such as people who live in poverty, are chronically ill, disabled, over 65 or under 5 years old.

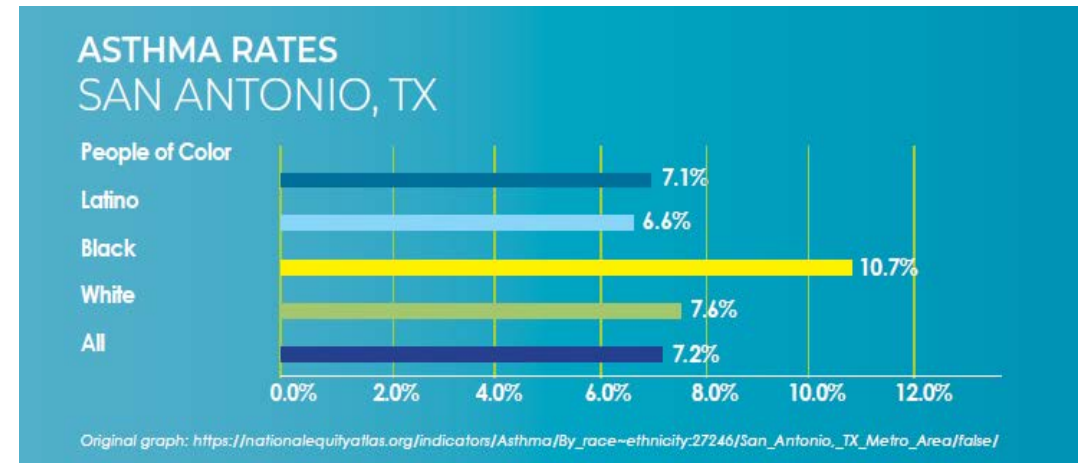
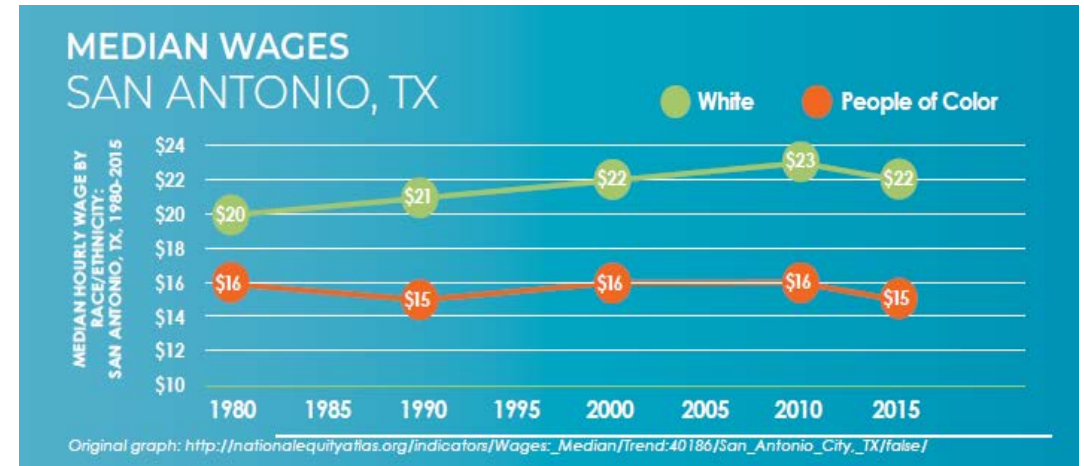
Climate Equity

Equity – Policy-making, service delivery, and distribution of resources account for the different histories, challenges, and needs of the people we serve.

Climate Equity – Ensures that communities burdened the most by climate change, that contribute the least to climate change, and those most socially vulnerable play a central role in the just transformation of the systems.

Intentional policies and projects must:

1. Actively seek, include, and prioritize direction from these communities.
2. Prioritize benefits to these communities.
3. Reduce existing burdens and bar additional burdens to these communities.



Climate Equity Screening Tool

1. Access and Accessibility

Increased access to jobs, housing, transportation, funding, education, healthy foods, and clean air

2. Affordability

Lower / more predictable costs related to basic living needs (e.g. housing, food, utilities, healthcare, transportation, etc.) for marginalized communities

3. Cultural Preservation

Respecting and honoring cultural relevance & history

4. Health

Increased health (physical and mental) for vulnerable communities

5. Safety and Security

Mitigation of potential threats as well as access to critical lifelines. when (or before) threats are experienced

IMPLEMENTING CLIMATE EQUITY: SCREENING TOOL

NOTE: This tool requires additional evaluation, refinement, and testing to ensure effectiveness.

STRATEGY/PROGRAM TO BE EVALUATED:

THEME 1: ACCESS AND ACCESSIBILITY

Desired Outcome: Results in increased access to jobs, housing, transportation, funding, education, healthy foods, and clean air for vulnerable populations.

SAMPLE SUPPLEMENTAL QUESTIONS	IMPACT Does it have the ability to positively/negatively impact or have no impact on the desired outcome? Include explanation.	RECOMMENDATIONS
Could this expand access to healthy/clean transport systems, such as walking paths, bike routes, and public transit?		
Could this increase amenities and walkability in traditionally underserved geographies/neighborhoods?		
Could this reduce food insecurity in low-income areas by increasing access to healthy, local food sources?		
Could this increase access to information around climate, i.e. impacts, benefits, and programs?		
Could this increase access to quality parks/greenspaces in the most vulnerable communities?		
Could this increase opportunities for living wage jobs in the same zip code as people live?		
Will this offer workforce or support training programs?		
Other considerations?		
SUMMARY:		

THEME 2: AFFORDABILITY

Desired Outcome: Results in lower / more predictable costs related to basic living needs (housing, food, utilities, healthcare, transportation, etc.) for vulnerable populations.

SAMPLE SUPPLEMENTAL QUESTIONS	IMPACT Does it have the ability to positively/negatively impact or have no impact on the desired outcome? Include explanation.	RECOMMENDATIONS
Could this reduce the number of families that are cost burdened by housing + transportation (defined as spending more than 33% of income on H+T)?		
Could this limit displacement of residents and small businesses when surrounding property values rise?		
Could this increase energy price stability?		
Could this reduce barriers to homeownership?		
Does this offer inclusive financing strategies that prioritize the most income-burdened populations?		
Could this increase quality affordable (below 60% AMI) housing stock?		
Other considerations?		
SUMMARY:		

5 Min. Break

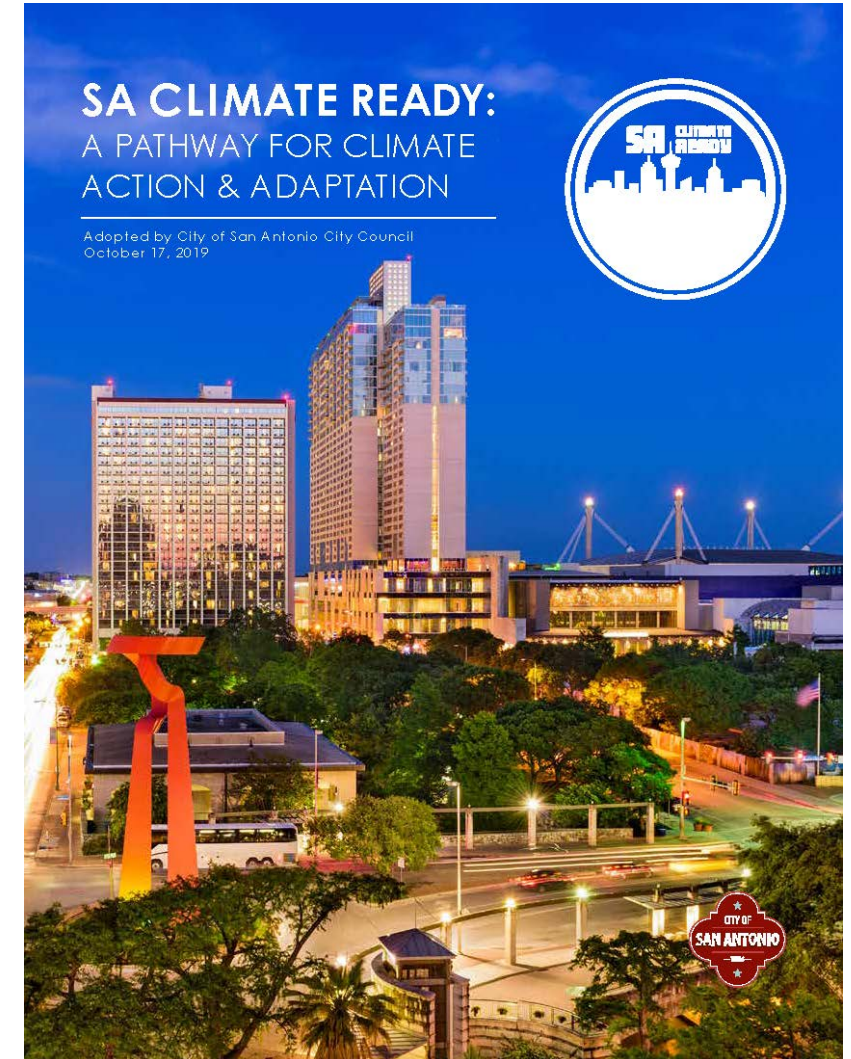


SA
**CLIMATE
READY**

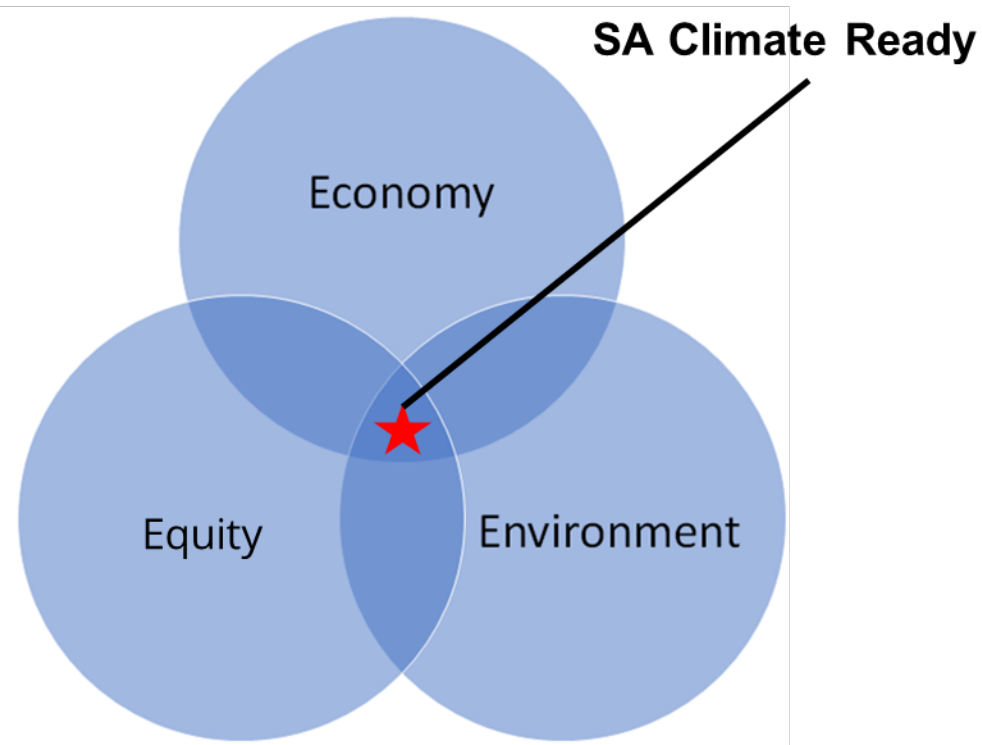
SA Climate Ready: A Pathway for Climate Action & Adaptation

- **SA Tomorrow Sustainability Plan**— a roadmap for enhancing our community's quality of life and overall resilience while balancing the impact of our expected growth.
- **Paris Climate Agreement** — on June 22, 2017 City Council passed a Resolution supporting the Paris Climate Agreement with goals to reduce greenhouse gas emissions and prepare for climate change.
- **Marginal Non-Attainment** — in 2018, the EPA designated the city to be in marginal non-attainment for ground-level ozone.
- **CAAP** — adopted on October 17, 2019.

Goals: Net Carbon Neutrality by 2050 & Adapt to Climate Impacts



SA Climate Ready and Current Council Priorities



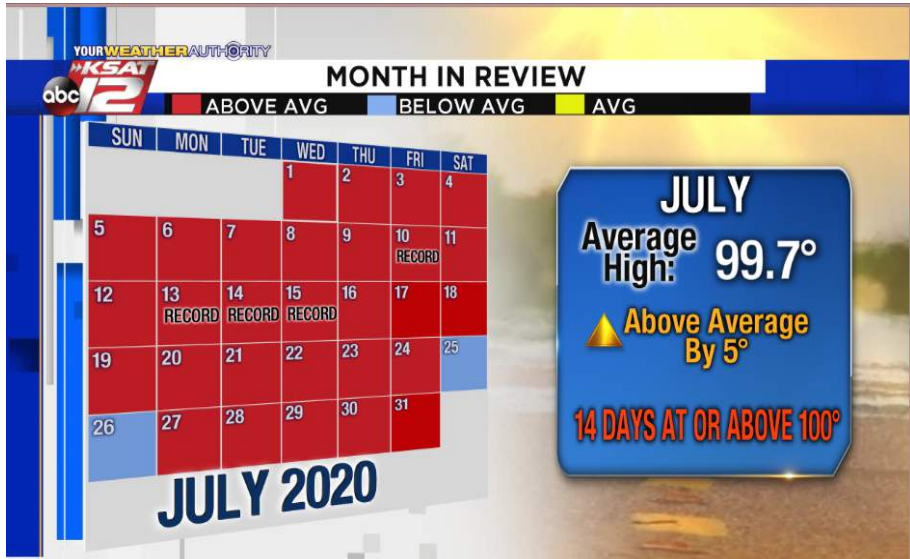
Climate action reinforces San Antonio's current response to the overlapping threats from:

- Covid-19
- Economic recession
- Systemic racism

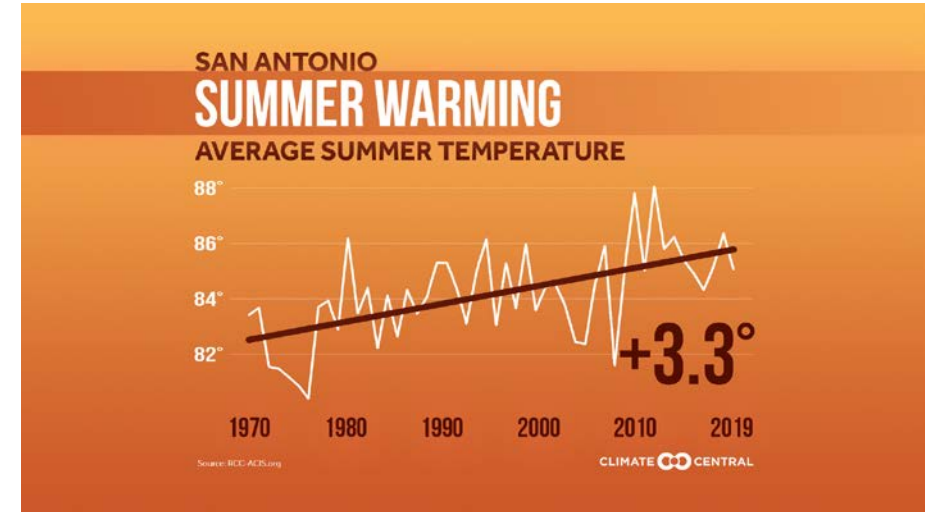
SA Climate Ready focuses on:

- Reducing emissions and improving air quality and public health outcomes
- Reducing unnecessary energy consumption, lowering energy bills and saving money for residents, businesses and institutions
- Promoting equity and environmental and climate justice
- Increasing economic competitiveness and access to green job opportunities
- Building community resilience

Current Status of Climate Change



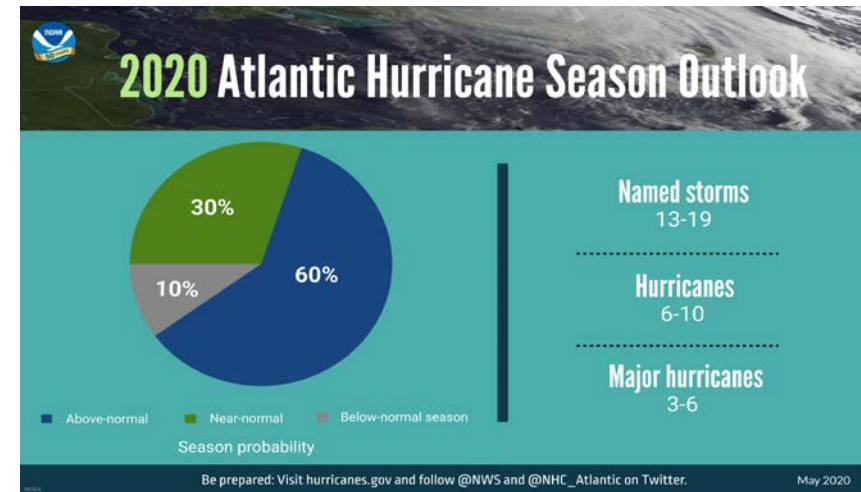
KSAT.com/weather



<https://medialibrary.climatecentral.org/resources/2020-summer-package>



A screenshot of the PurpleAir map on September 11, 2020 shows the impact of wildfire smoke in California, Oregon and Washington. Courtesy of PurpleAir.



<https://www.noaa.gov/media-release/busy-atlantic-hurricane-season-predicted-for-2020>

Climate Projections, End of Century

	Low Emissions Pathway	High Emissions Pathway
Summer Maximum Temperature	+ 6° F	+ 10° F
Hot Days (Maximum Temperature >100° F)	+ 48 days	+ 94 days
Warm Nights (Minimum Temperature >80° F)	+ 10 nights	+ 55 nights
Annual Precipitation	- 3 inches	- 4 inches
+ Increased risk of extreme precipitation and flooding		

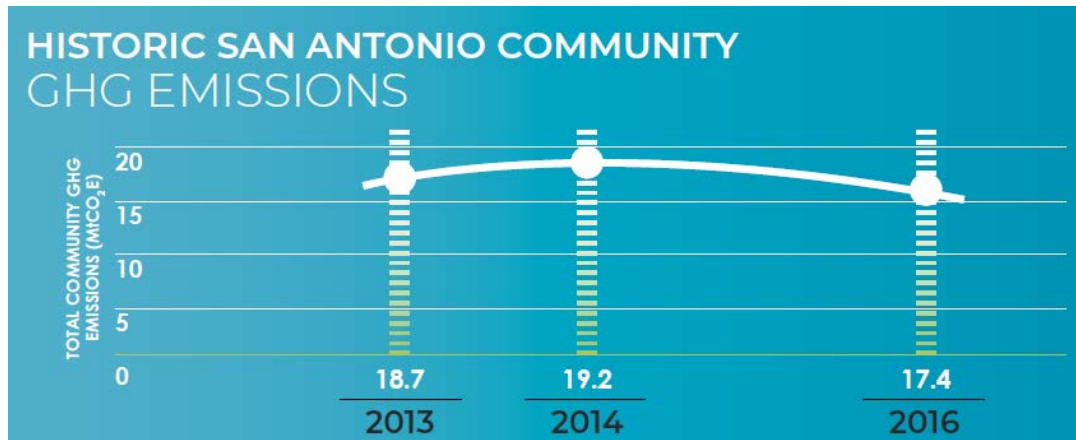
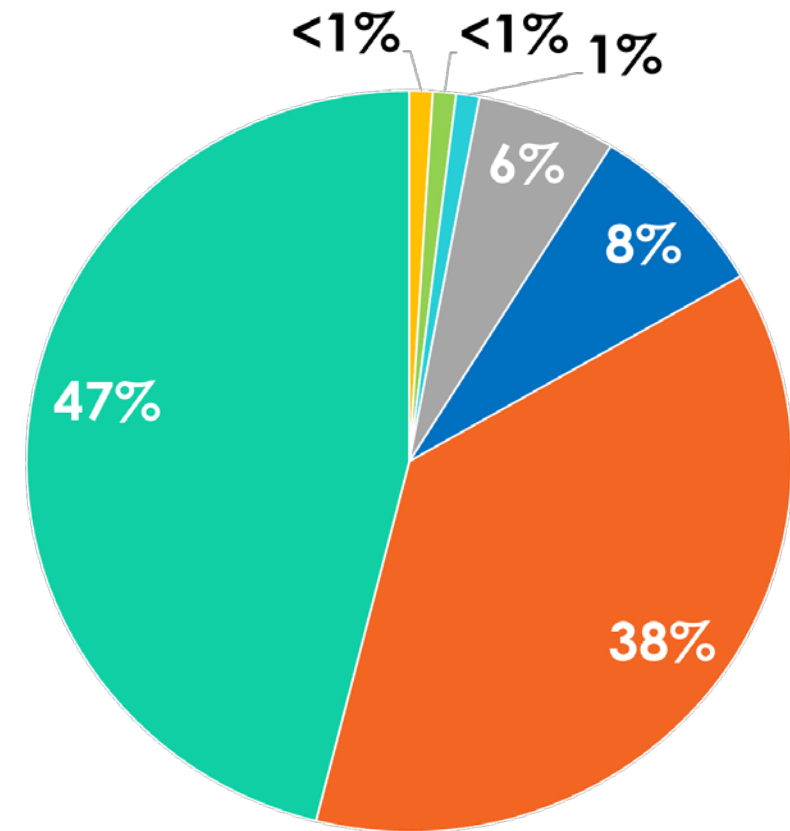
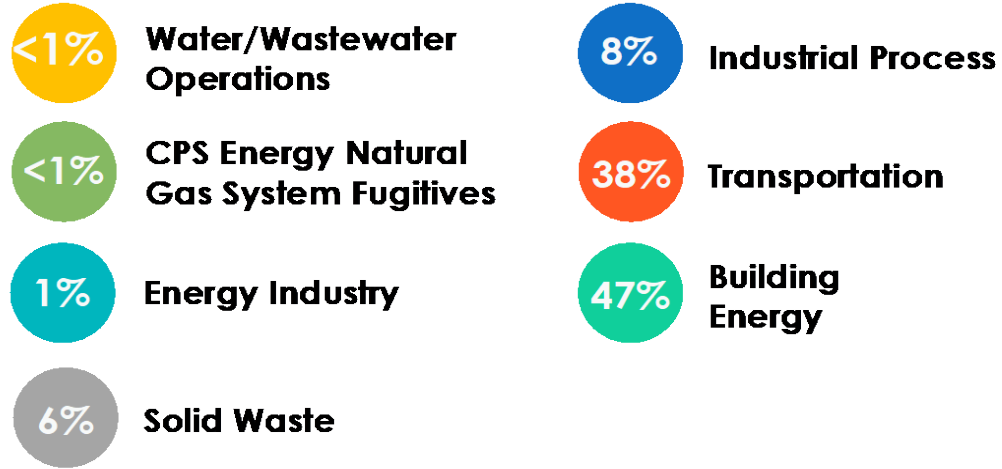


The Cost of Doing Nothing

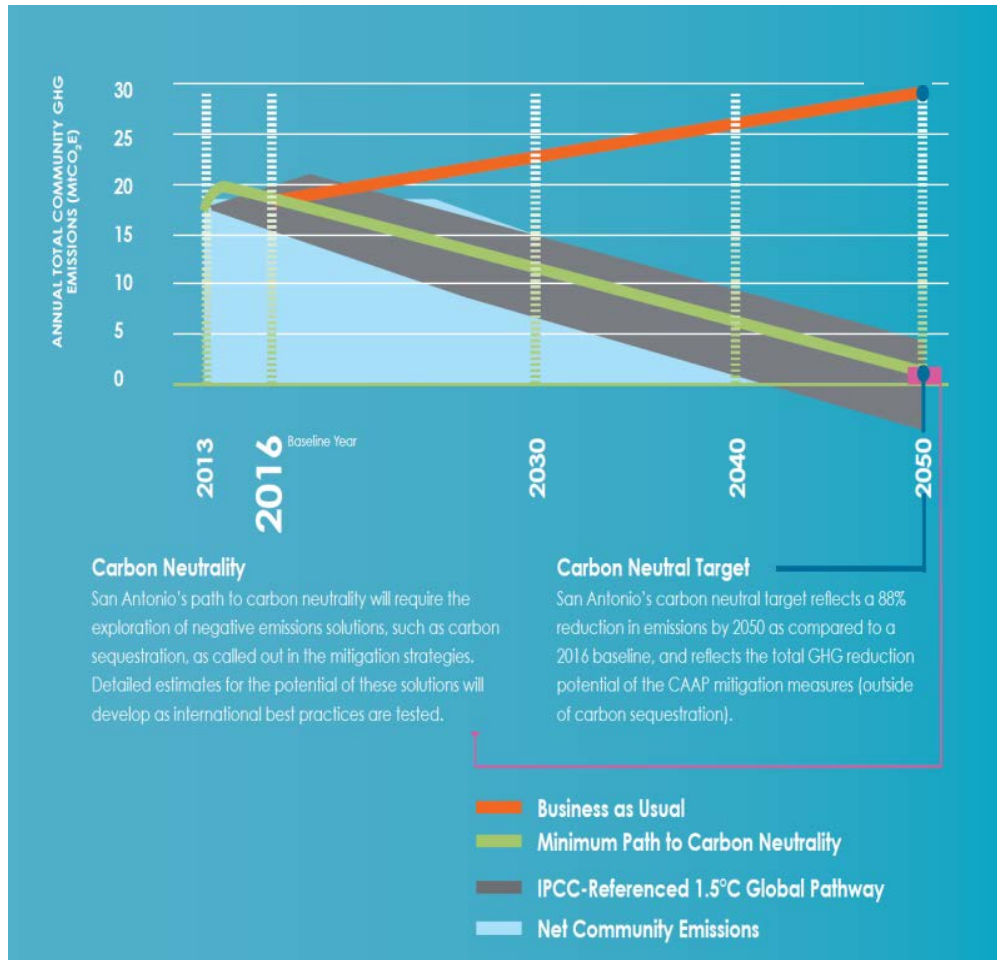
- 1. Increased Health Risks from Heat Exposure** The death rate for elderly populations with chronic health conditions could increase from 9% to 20%.
- 2. Ozone and Human Health** Exposure to ground-level ozone poses significant threats to human health including premature death, aggravated asthma, and respiratory hospital admissions. Marginal nonattainment of ozone levels, result in 19 additional deaths annually.
- 3. Increased Wildfires** Rising temperatures and more sporadic precipitation are expected to increase the wildfire risk and duration of the fire season. In total, homes in areas of high and medium risk represent an estimated \$16.6B of property value.
- 4. Impact on Infrastructure** Projected climate impacts to infrastructure are among the highest of all regions. Increases in electricity costs to meet projected increases in demand are high, rising from \$0.57 billion per year in 2050 to \$1.7 billion per year by 2090 under high emissions scenarios.
- 5. Impact on Financial Markets** Many entities including the Federal Reserve, Moody's, S&P, U.S. Commodity Futures Trading Commission have produced reports stating that "climate change poses a major risk to the stability of the U.S. Financial system and the ability to sustain the American economy."



Greenhouse Gas Inventory



Greenhouse Gas Reduction Pathway



INTERIM GHG REDUCTION TARGETS	2030	2040	2050
Total Emissions: percent reduction over 2016 GHG emissions	41%	71%	100%
INTERIM GHG REDUCTION TARGETS	2030	2040	
Stationary emissions	41%	74%	
Transportation emissions	47%	75%	
Solid waste emissions	32%	54%	
Water supply emissions	<1%	<1%	
Industrial process emissions	23%	56%	

In 2018 the Intergovernmental Panel on Climate Change (IPPC) released the "Special Report: Global Warming of 1.5°C" that states "For reduction pathways that are technically feasible currently, i.e. include no or limited overshoot of 1.5°C, **global anthropogenic CO2 emissions need to decline by about 45% from 2010 levels by 2030, reaching net zero around 2050.**"

Greenhouse Gas Framework

Mitigation

Examples:

Increasing renewable energy
Reducing energy use in buildings

Greenhouse Gas Reduction Strategies

- 1) Increase Carbon-Free Energy
- 2) Reduce Building Energy Consumption
- 3) Reduce Transportation Energy Consumption
- 4) Advance the Circular Economy
- 5) Promote Biodiversity and Healthy Ecosystems
- 6) Educate & Empower

28 Community Strategies

13 Municipal Strategies

Adaptation

Example:

Flood-proof roadways & critical infrastructure

Adaptation Strategies

- 1) Increase Infrastructure Resilience
- 2) Strengthen Public Health Systems
- 3) Enhance Emergency Management & Community Preparedness
- 4) Promote, Restore, and Protect Green Infrastructure & Ecosystems
- 5) Protect Local Food Security
- 6) Increase Resiliency Awareness & Outreach
- 7) Ensure Equity in Adaptation

45 Community & Municipal Strategies

Implementation

Community Sustainability

- Benchmarking & Disclosure American Cities Climate Challenge
- EV & Solar Readiness American Cities Climate Challenge
- Mayor's Youth Engagement Council on Climate Initiatives
- Heat Vulnerability Analysis
- Property Assessed Clean Energy (PACE) American Cities Climate Challenge
- SA Climate Ready Forum
- 2019 Greenhouse Gas Inventory
- CPS FlexSTEP & FlexBundle

Municipal Sustainability

- Leadership & Employee CAAP Training Program
- CAAP Departmental Consistency Reviews
- Green Fleet Policy Update & EV Procurement
- 100% Renewable Electricity
- Cool Pavement Pilots
- Municipal Energy Efficiency Projects
- Racial Equity & Capacity Building

Transportation

- EVSA Public Information Campaign
- Community EV Charging Infrastructure American Cities Climate Challenge
- Clean Air for Kids
- High-Frequency Public Transit Network American Cities Climate Challenge
- Commuter Incentives American Cities Climate Challenge
- Public Transit Speed, Reliability, & User Experience American Cities Climate Challenge



Engagement & Communications Initiative

Engagement & Communications:

- Social Media/Media/Marketing Campaign
- Customization of campaign messaging
- Story pitches to local media/op-eds
- Survey target audiences
- Spanish translation
- Drive awareness and action

Graphic Design Services:

- Engagement & Outreach Materials
- Infographics

Focus on Equity

- Funds dedicated to contracting with grassroots organizations for targeted engagement with vulnerable residents and communities of color

Timeline

- City Council A Session + Implementation in early 2021



Reflection Exercise



SA
**CLIMATE
READY**

Next Steps

Mandatory Trainings

Climate Science 101 Sessions

- January or February 2021: Dr. Andrew Dessler, TAMU

Required Training Sessions

- January 2021: **Historical Truths Unveiled: An Introduction to Racism in the U.S.** (4 hrs)
- February 2021: **Examining Power and Its Impact** (2 hrs)
- February 2021: **Coaching Skills as Race Equity Tools** (1.5 hrs)

Meeting Schedule 2021

- **Q1** – March
- **Q2** – June
- **Q3** – September
- **Q4** – December

Questions?



SA
**CLIMATE
READY**

Thank You!



SA
**CLIMATE
READY**