



TRANSPORTATION DEPARTMENT

Micromobility Plan

Implementation of Bicycle Infrastructure

Transportation & Mobility Council Committee

January 12 , 2021

Bianca Thorpe, P.E., Capital Programs Manager



FY 2020 BUDGET



SAN ANTONIO
**BIKE
PLAN
2011**
+ IMPLEMENTATION STRATEGY

Creation of PW Active
Transportation Team

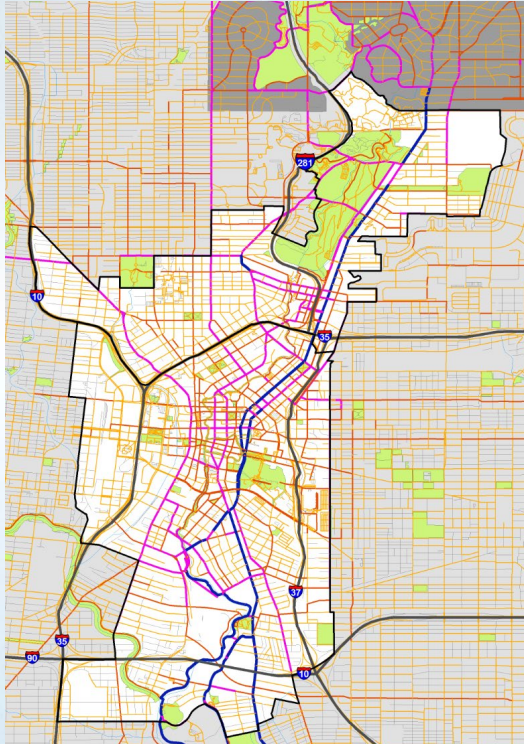
Micromobility Policy Document

Best Practice Review
of Complete Street Policies

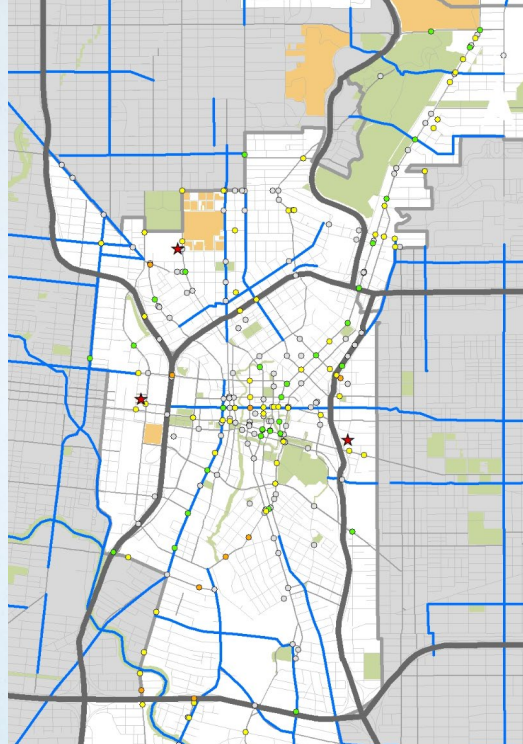
Downtown/Midtown
Implementation Plan

Community Engagement

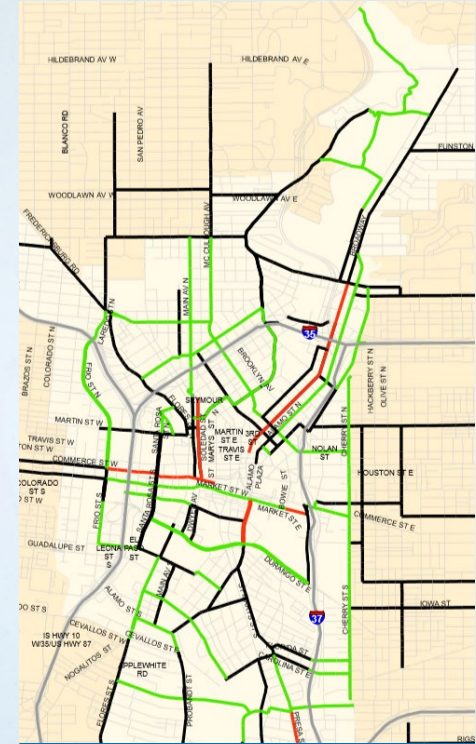
CORRIDOR IDENTIFICATION



Demand



Equity/Safety



Connectivity



Downtown & Midtown Implementation Plan



Community Engagement

Corridor Identification: 4-6

Corridor Modeling



CORRIDOR PRIORITIZATION

CRITERIA

SCORE

| | |
|---------------------|----|
| Stakeholder Input | 8 |
| Constraints | 5 |
| Opportunity | 5 |
| Safety | 10 |
| Existing Conditions | 5 |
| Demand | 5 |
| Connectivity | 9 |
| Equity | 8 |



U.S. Department of Transportation
Federal Highway Administration



THE UNIVERSITY OF NORTH CAROLINA
**HIGHWAY SAFETY
RESEARCH CENTER**



ONLINE OUTREACH

Online Survey

Crowd Sourcing
Map

Ad Campaign

MAKE YOUR MARK!

MAP YOUR COMMENTS & TAKE THE SURVEY!

As the City of San Antonio develops a micromobility policy for San Antonio, make sure you share your priorities, comments, and concerns. Take the survey and share comments on an interactive map.

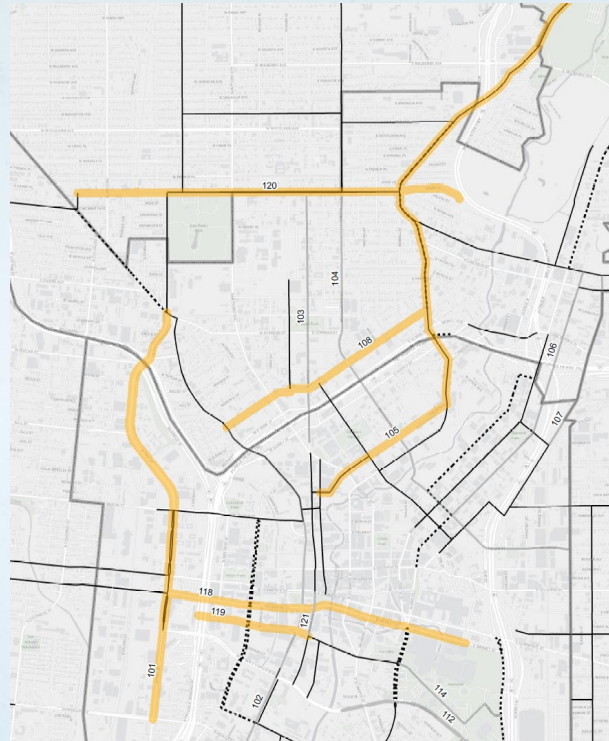
www.onlinepublicmeeting.org



Downtown/Midtown Implementation

| Key | Corridor | Limits |
|-----|------------------------|------------------------------|
| 101 | Frio | Guadalupe to Fredericksburg |
| 102 | Flores | Cevallos to Euclid |
| 103 | Main | Ashby to San Pedro |
| 104 | McCullough | Cherry to Ashby |
| 105 | St. Mary's /Augusta | Lexington to Tuleta |
| 106 | Alamo | McCullough to Josephine |
| 107 | Austin | Jones to Josephine |
| 108 | Euclid | St. Mary's to Flores |
| 109 | Probandt | King Roger to Theo |
| 110 | Steves | Probandt to Roosevelt |
| 111 | Florida-Carolina | I-37 Access to Cherry |
| 112 | Cesar Chavez | Pancoast to Cherry |
| 113 | Cherry | Milam to Westfall |
| 114 | Hemisfair Park Streets | Alamo to Tower of Americas |
| 115 | Lonestar | Roosevelt to Flores |
| 116 | Guenther | Flores to Eagleland |
| 117 | Labor | Cesar Chavez to Carolina |
| 118 | Market | Frio to Bowie |
| 119 | Nueva | Pecos to Main |
| 120 | Ashby-Dewey | St. Mary's to Fredericksburg |
| 121 | Main Plaza | Commerce to Nueva |

Demand



Connectivity

Highest Ranked

Frio (5 Points to Guadalupe)

St. Mary's
(Brackenridge to Downtown)

Ashby (St. Mary's to Fred)

Euclid (St. Mary's to Flores)

Market (Frio to Bowie)

Nueva (Pecos to Main)

Define Bike User

**Interested
but Concerned**
51%-56% of the total
population

**Somewhat
Confident**
5-9% of the total
population

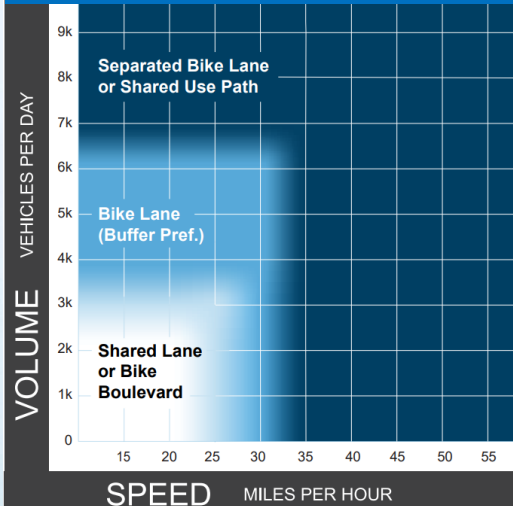
**Highly
Confident**
4-7% of the total
population



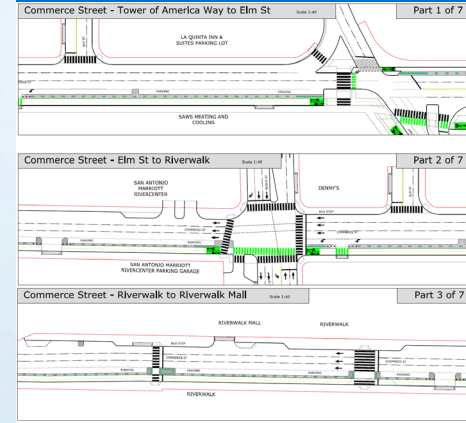
**LOW STRESS
TOLERANCE**

**HIGH STRESS
TOLERANCE**

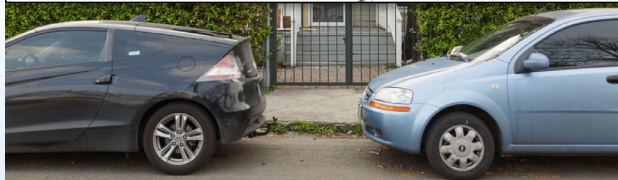
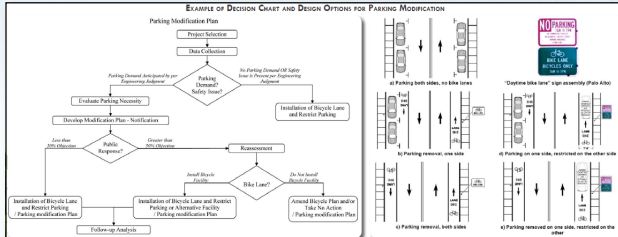
Facility Selection



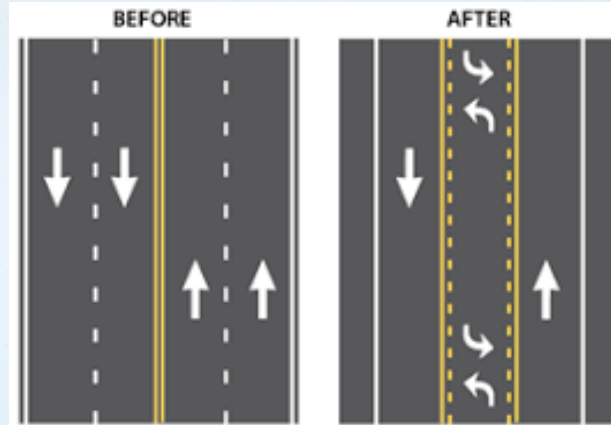
Model



Micromobility Policy Document



Parking



Road Diets



National Complete
Streets Coalition



Smart Growth America
Improving lives by improving communities

Complete Streets
Policy



- ✓ Staff work sessions for two new policy initiatives:
 - Complete Streets Policy (including a micromobility toolkit) & Sidewalk Transition Plan.
 - Gather staff input.
- ✓ 6 Options for a one-hour virtual work session



Micromobility
Policy



Proposed
Future Funding



Proposed 2022
Bond Program



TRANSPORTATION DEPARTMENT

Micromobility Plan

Implementation of Bicycle Infrastructure

Transportation & Mobility Council Committee

January 12 , 2021

Bianca Thorpe, P.E., Capital Programs Manager