



CITY OF SAN ANTONIO  
**EDWARDS AQUIFER**  
PROTECTION PROGRAM

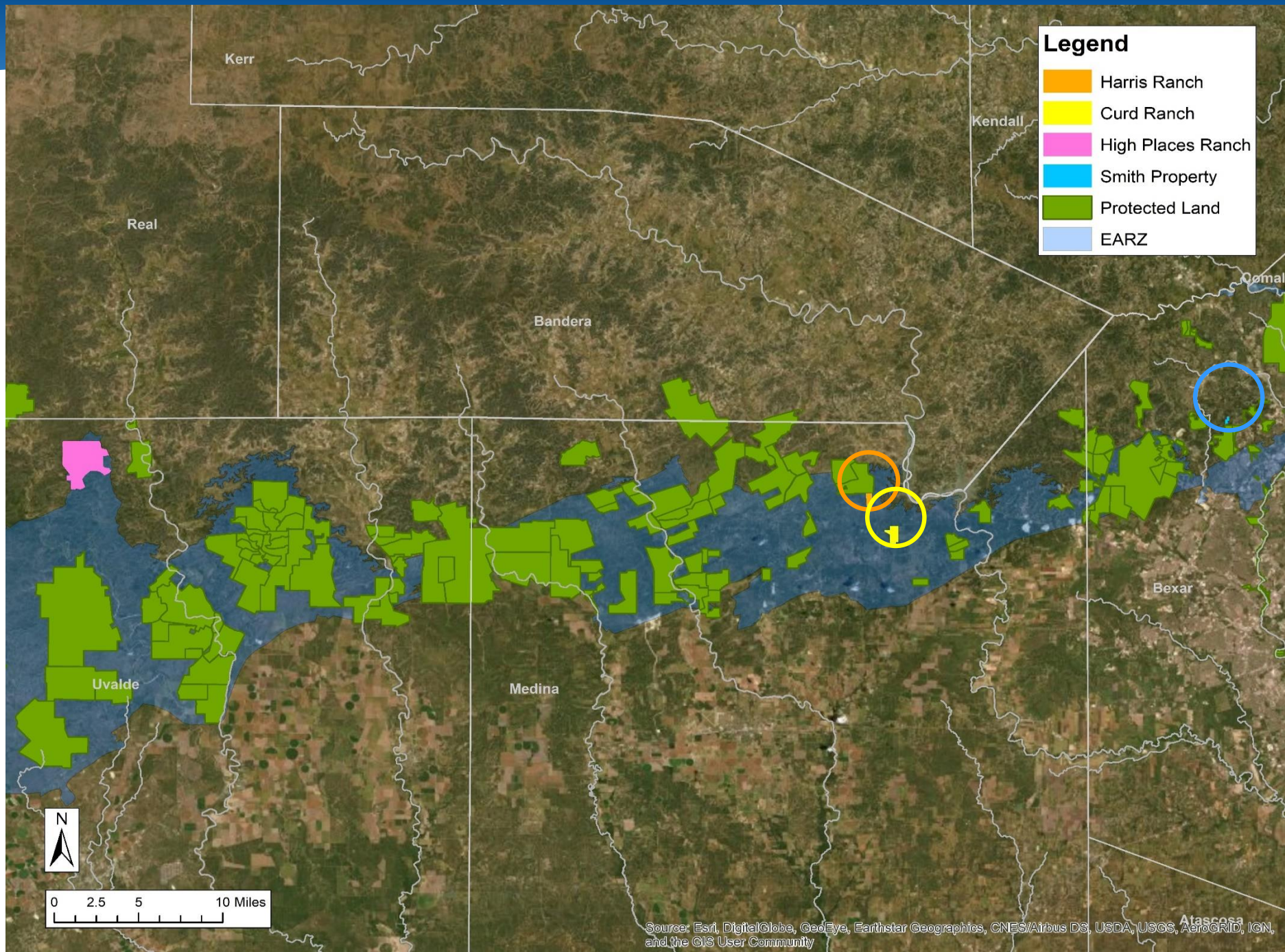
# Conservation Advisory Board

## January 27, 2021



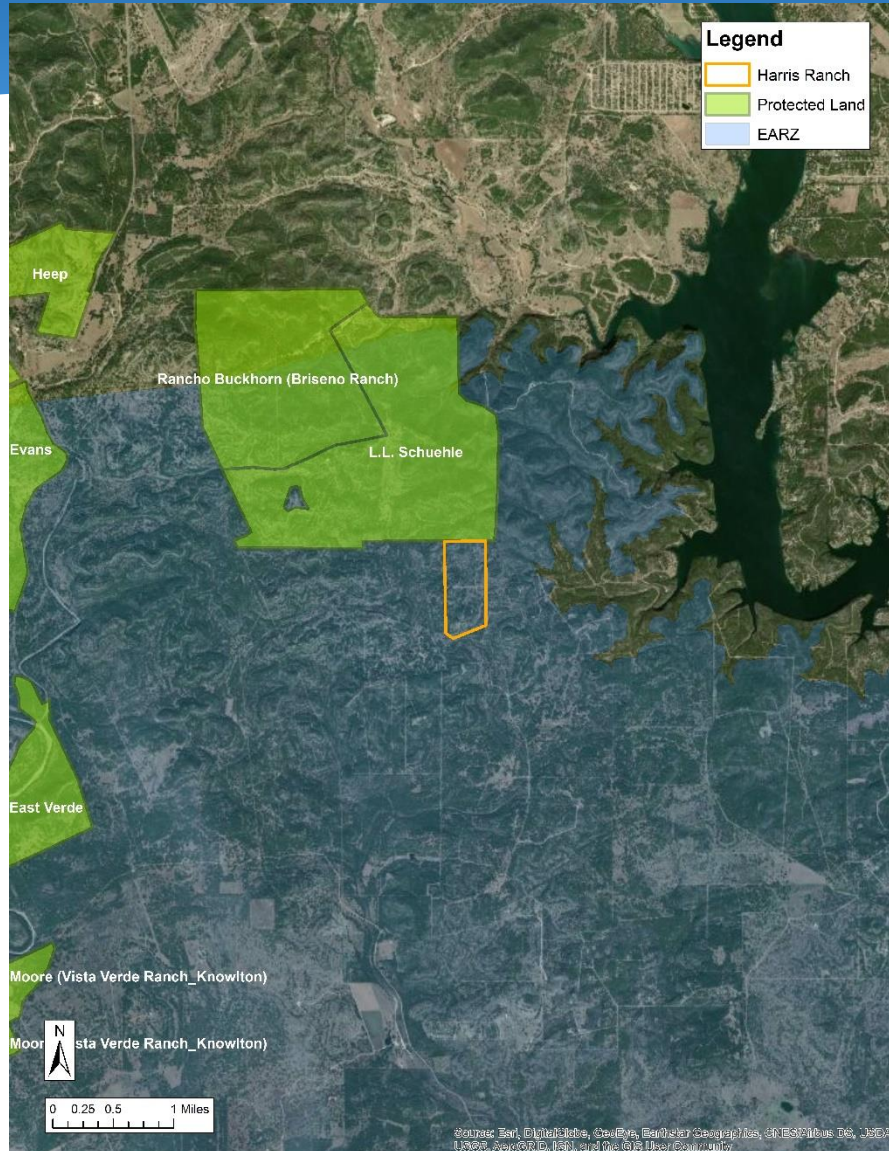
GREEN  
SPACES  
ALLIANCE  
OF SOUTH TEXAS

Harris Ranch  
Curd Ranch  
High Places Ranch  
Smith Property





# Harris Ranch (~157 acres) Medina County



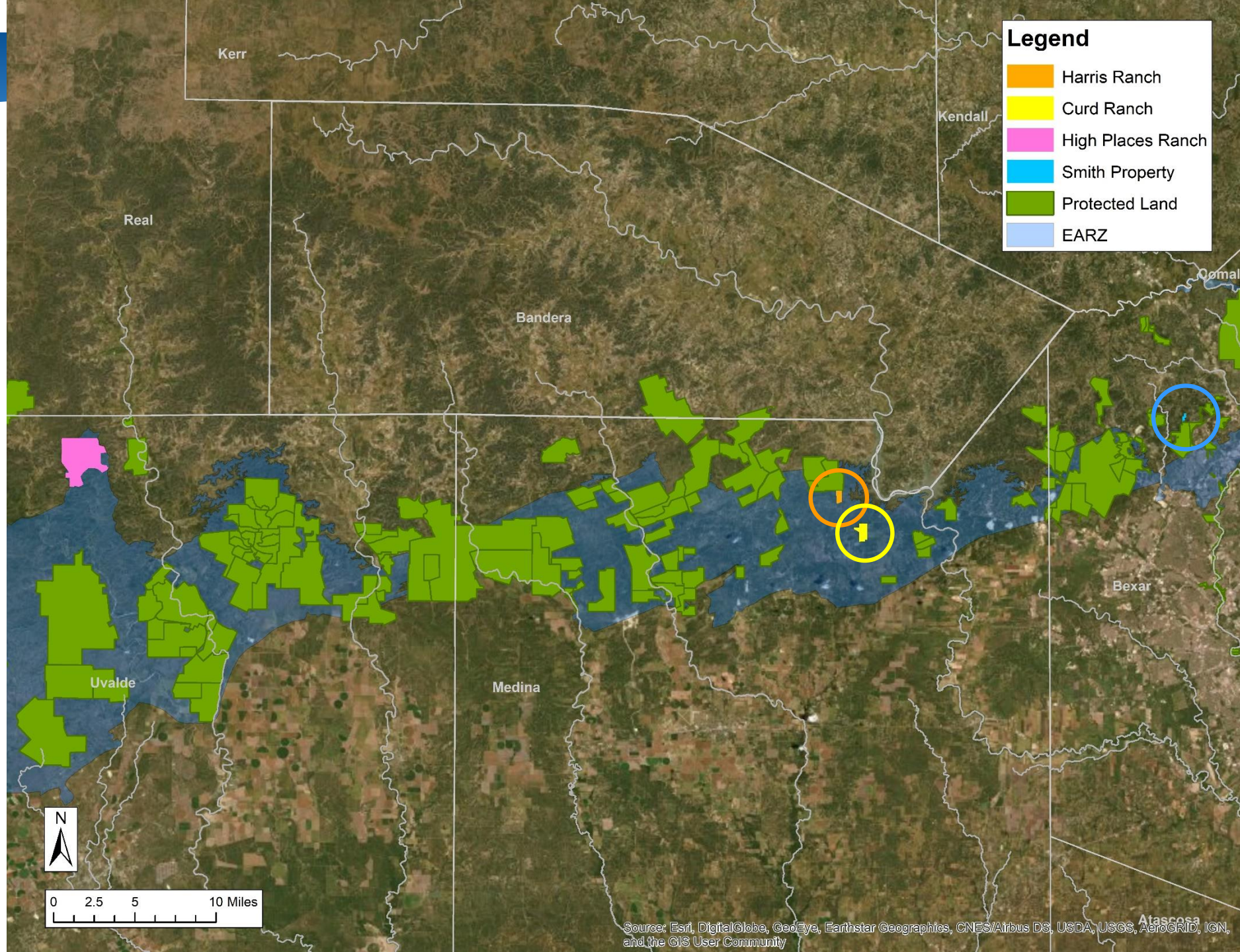


## Harris Ranch (~157 acres) Medina County

- 100% in EARZ
- Adjacent to L.L. Schuehle CE; SW of Medina Lake
- Top 50% of SET model
- Medina River watershed
- Requesting Stage 1 Approval

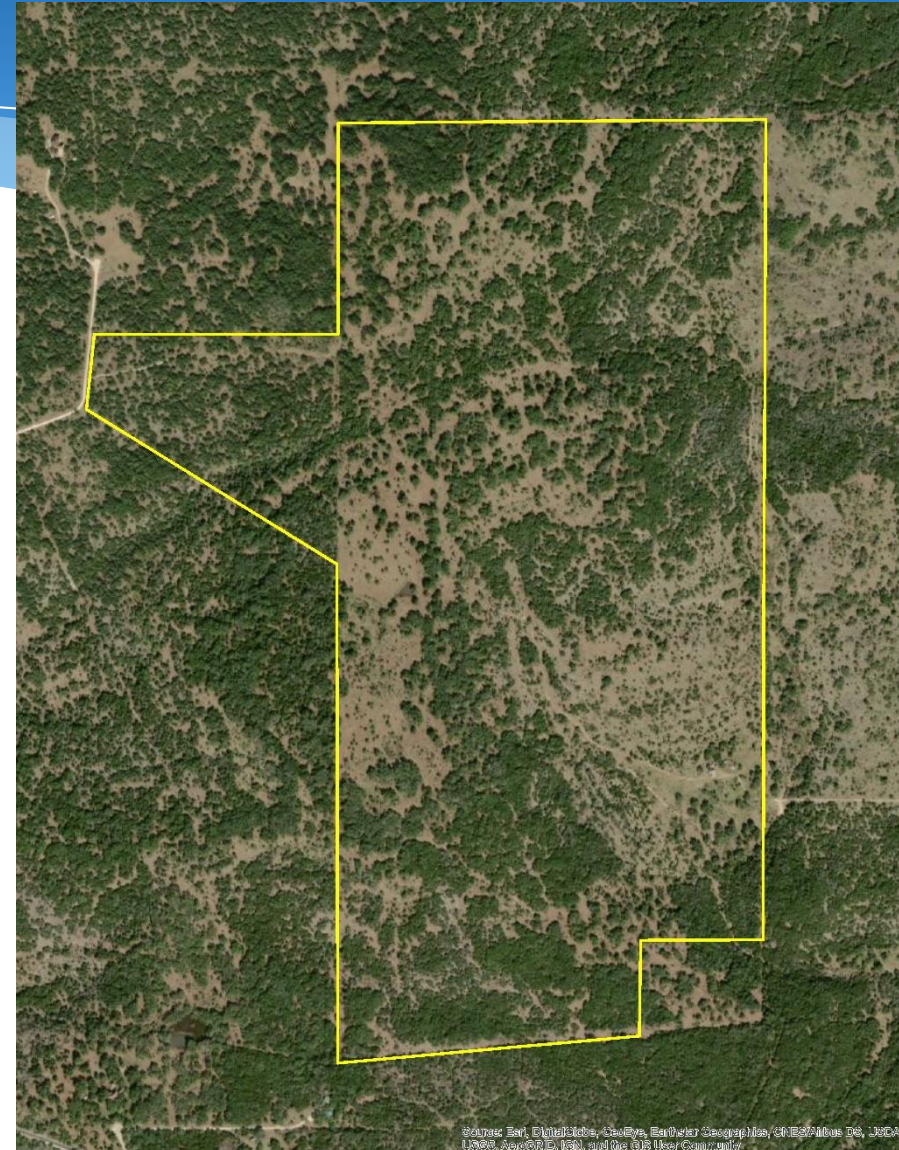








# Curd Ranch (~363 acres) Medina County



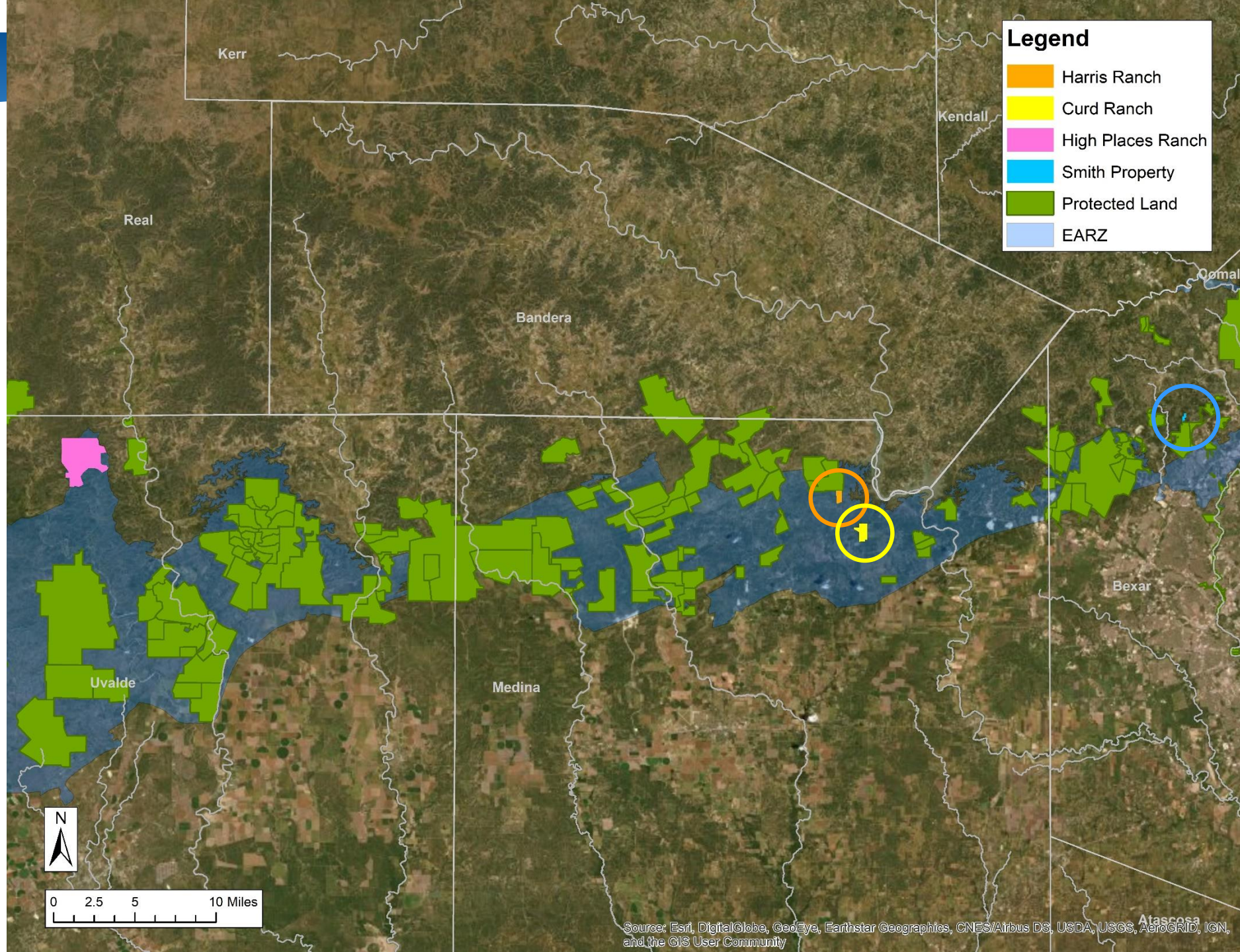


## Curd Ranch (~363 acres) Medina County

- 100% in EARZ
- Top 80% of SET model
- SW of Medina Lake
- Several known karst features in the area
- Medina River watershed
- Requesting Stage 1 Approval

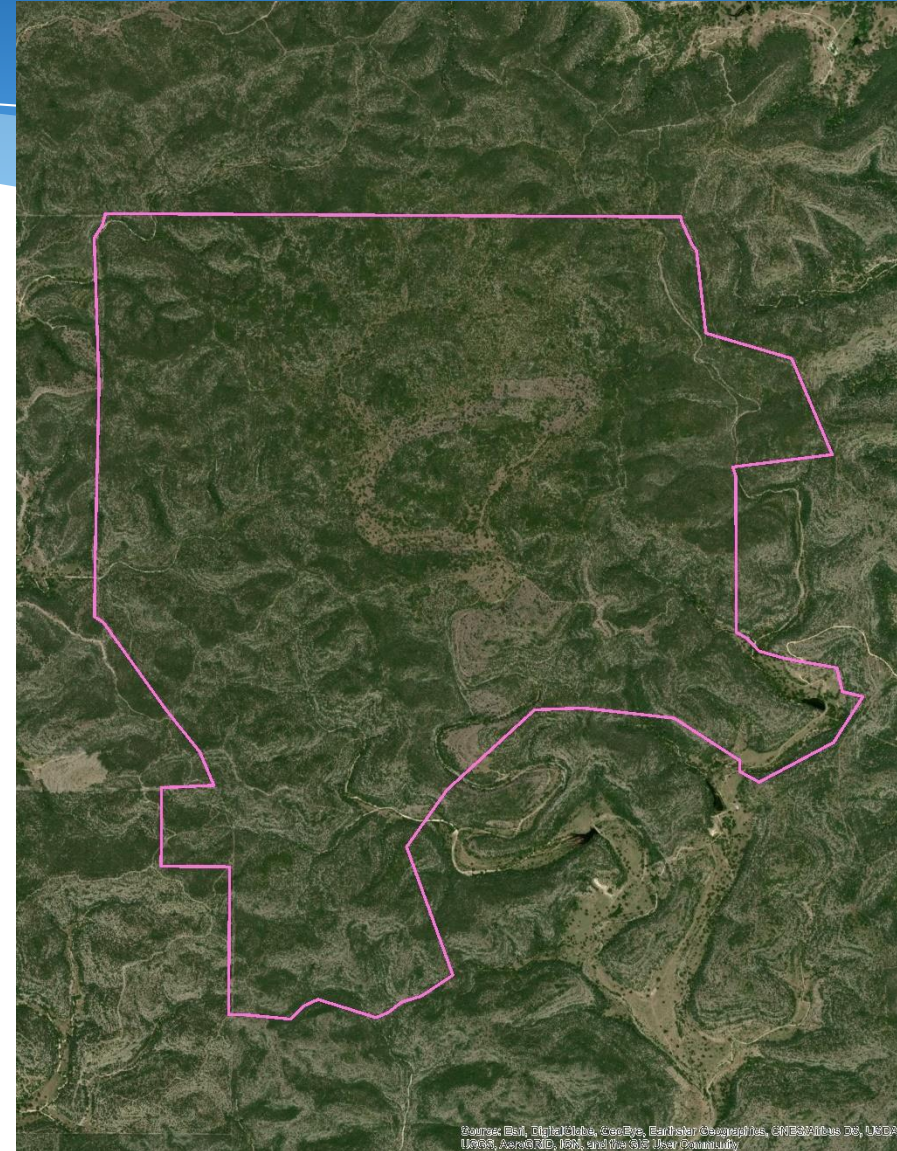
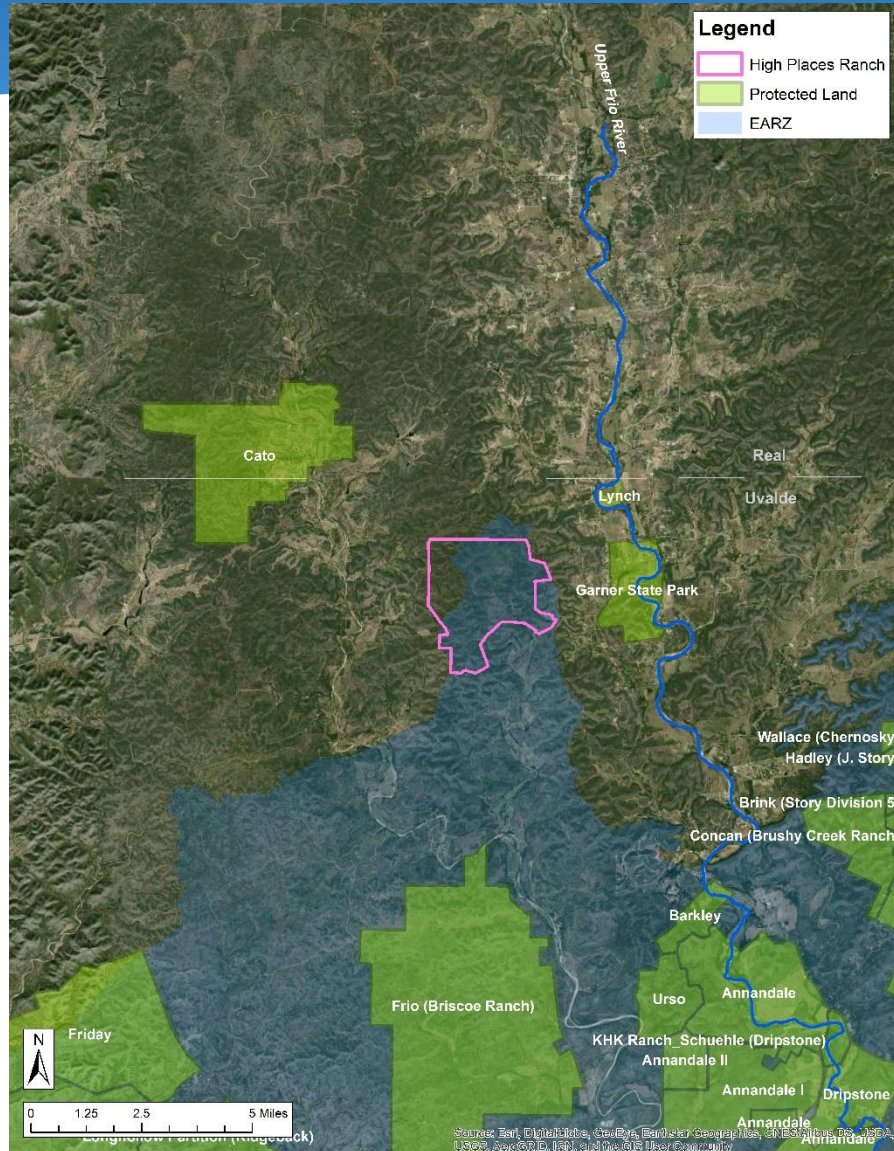








# High Places Ranch (3,656 acres) Uvalde County





## High Places Ranch (3,656 acres) Uvalde County



- Approx. 75% in EARZ
- Near Garner State Park and Cato CE
- Top 20% of SET model
- Upper Frio River watershed
- High water quantity
- Very high water quality

➤ Requesting Stage 2 Approval

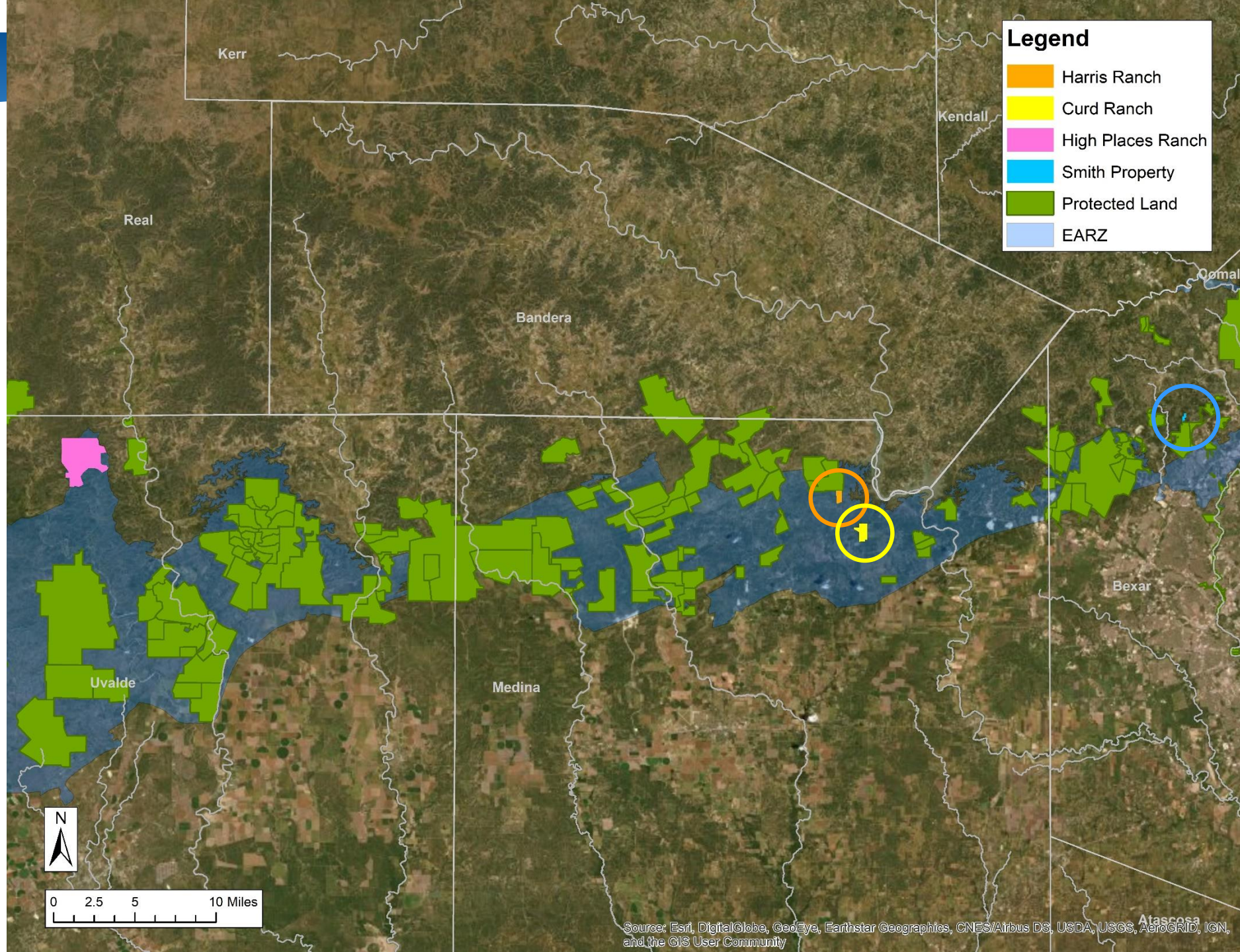




## High Places Ranch (3,656 acres) Uvalde County

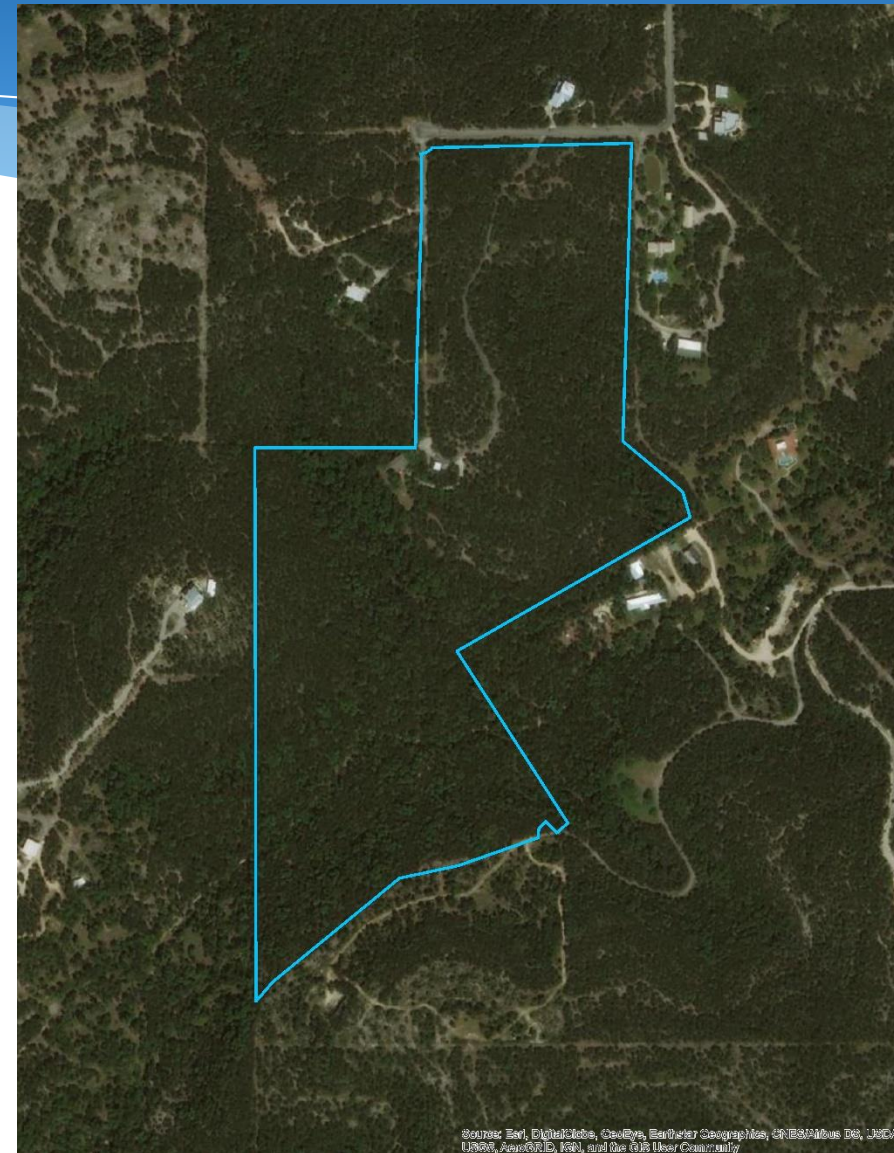
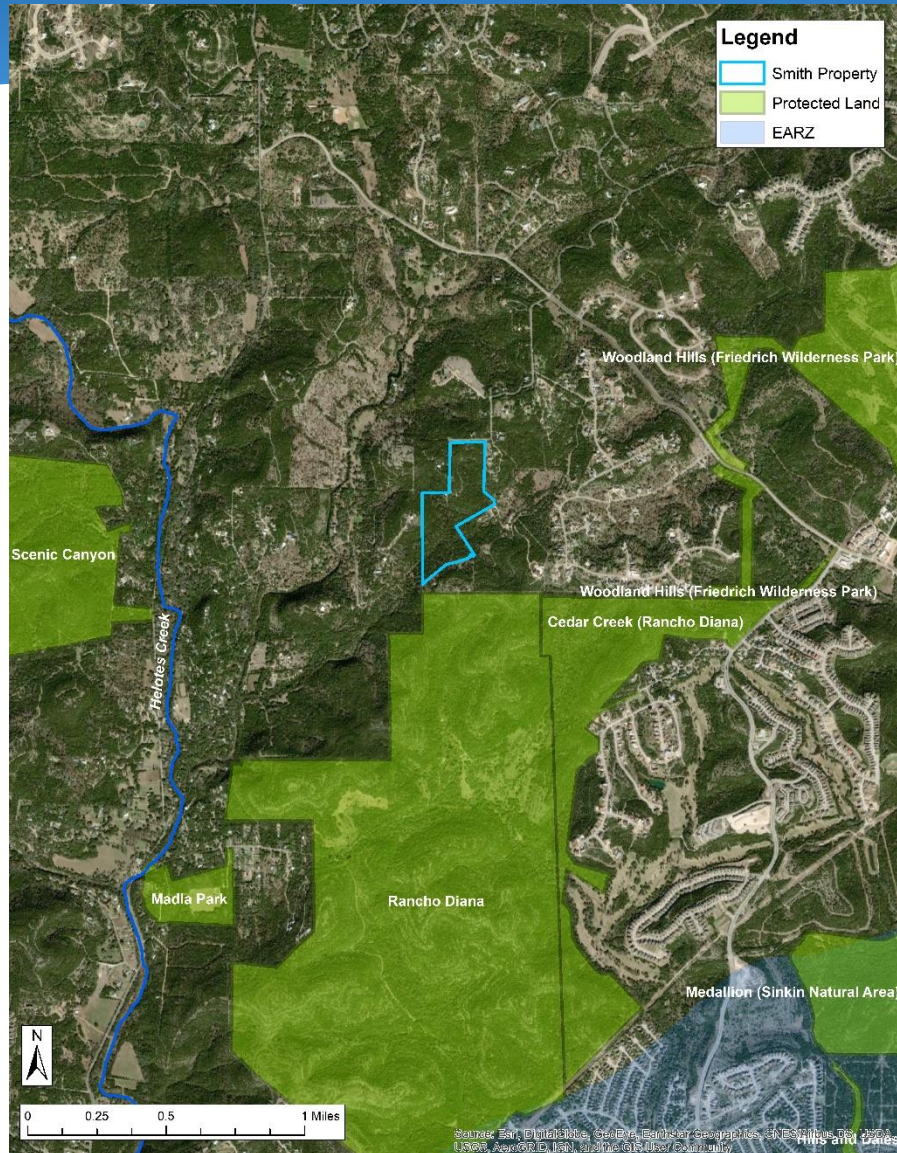








# Smith Property (48.20 acres) Bexar County





## Smith Property (48.20 acres) Bexar County

- ~2 miles from EARZ
- Close to Rancho Diana
- Top 10% of SET model
- Lee Creek watershed
- Moderate water quantity
- High water quality
- Requesting Final Approval

