



CITY OF SAN ANTONIO  
**EDWARDS AQUIFER**  
PROTECTION PROGRAM

# Conservation Advisory Board

## January 27, 2021

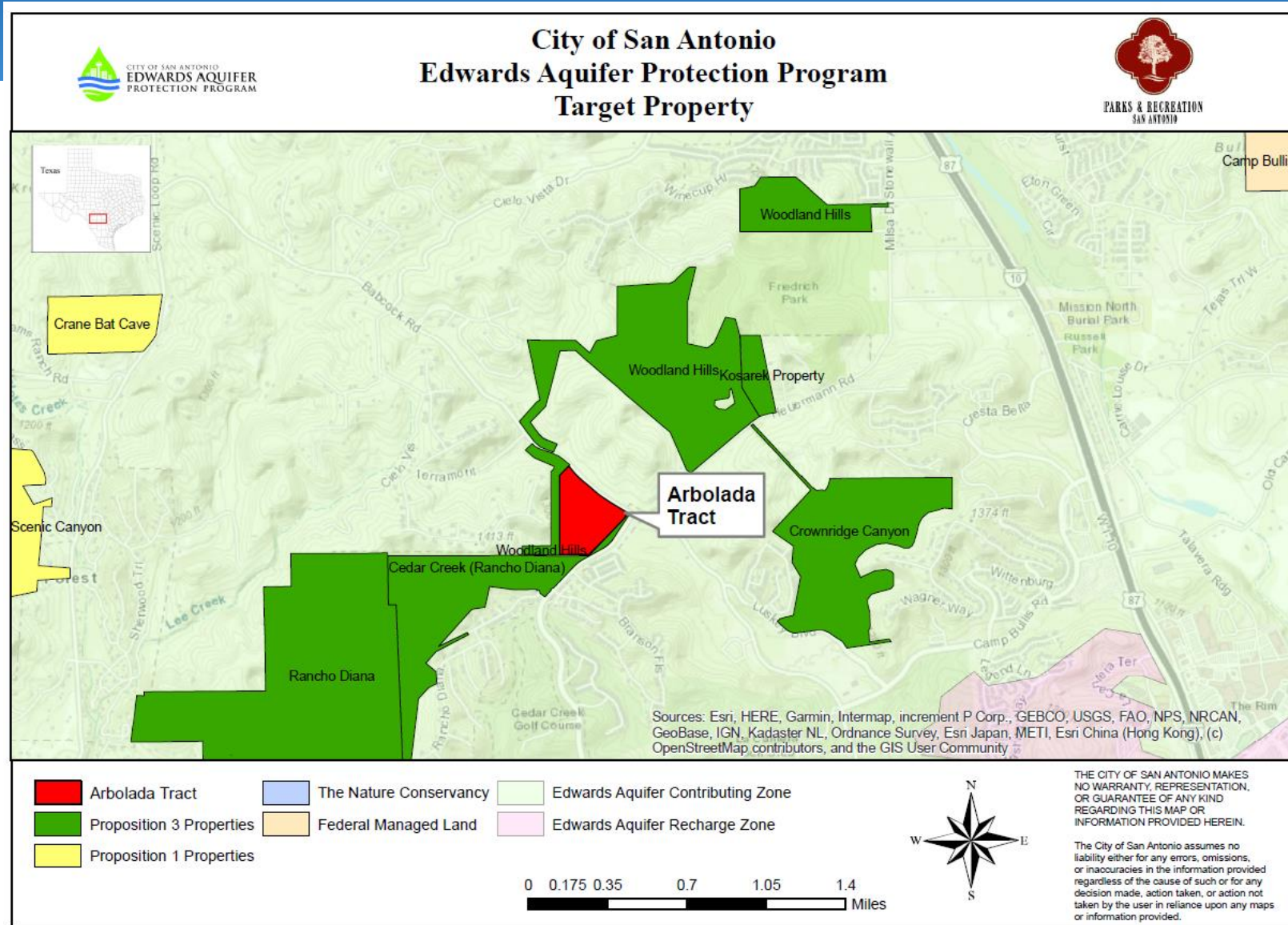


CITY OF SAN ANTONIO  
**PARKS & RECREATION**

Arbolada Project  
Stoner Ranch



# Arbolada Project (~20 Acres) Bexar County





# Arbolada Project (~20 Acres) Bexar County

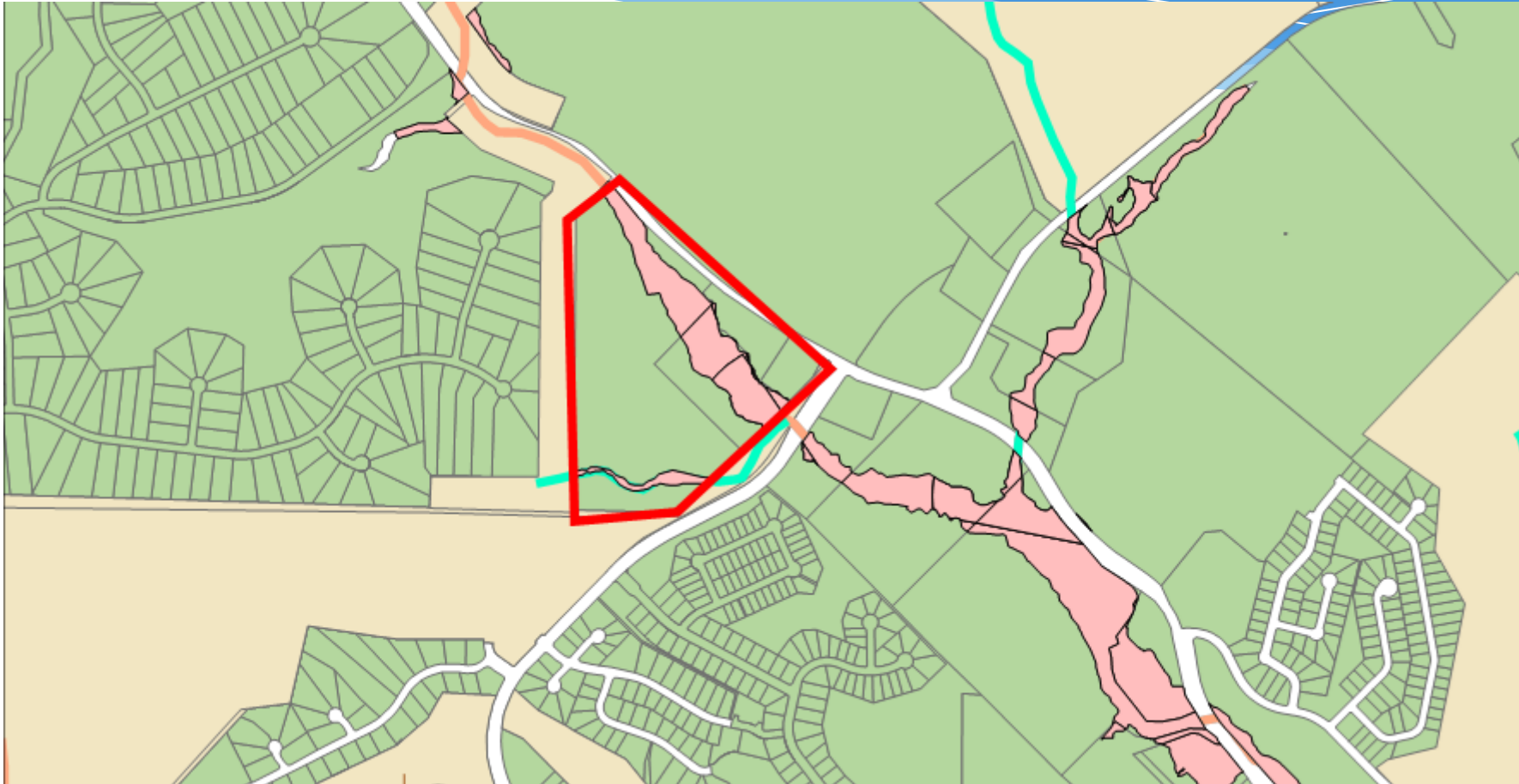
- Contains Cedar Creek; springs located on property
- Top 30% of Model
- Townhomes being developed by Place Development
- Place Devt has partnered with USFWS and CoSA SEP-HCP to protect golden cheeked warbler habitat
- Owner seeking donation of land or conservation easement; would provide second connection to Cedar Creek and Woodland Hills NAs
- **Requesting Stage 1 Consideration**





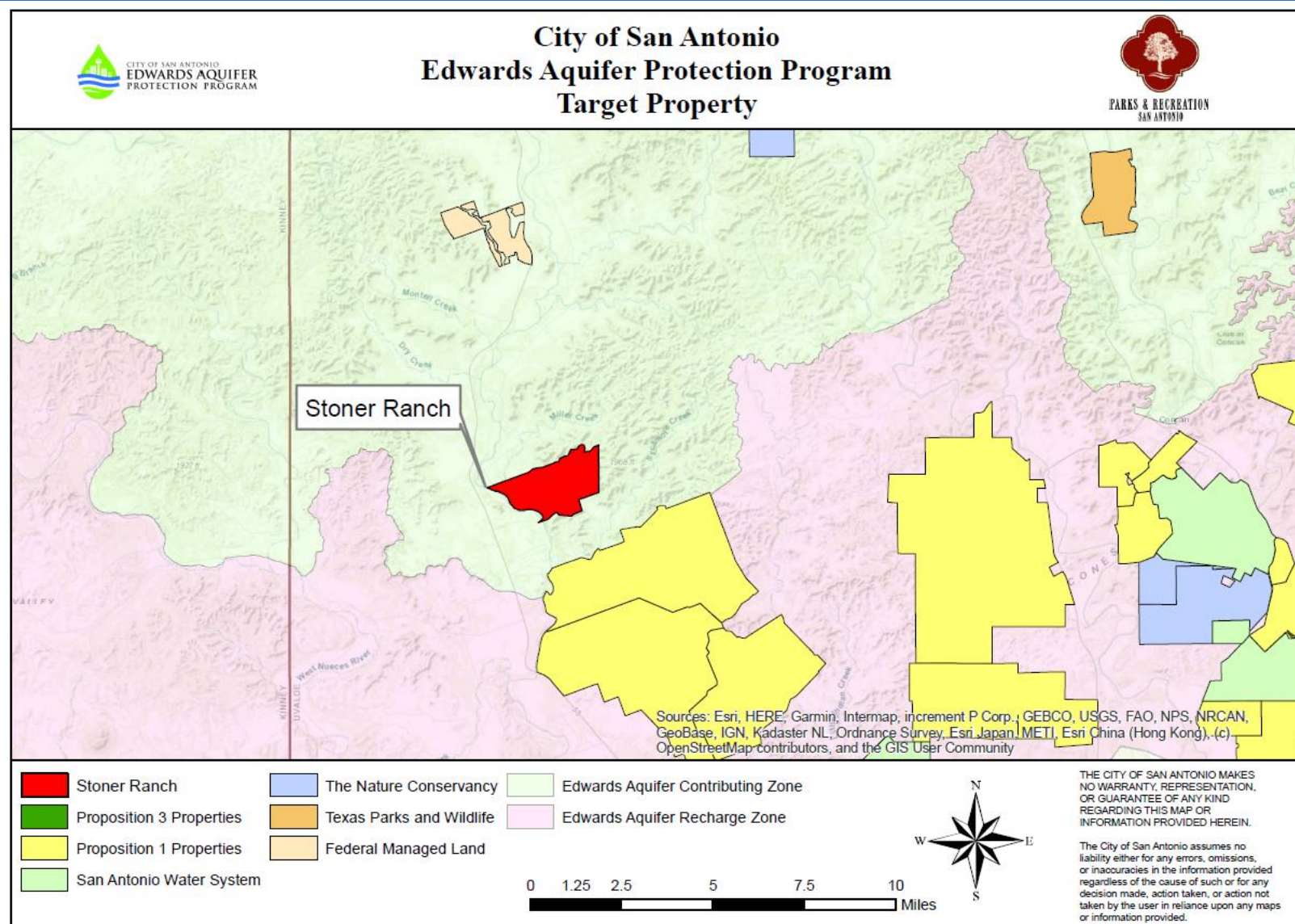


# Arbolada Project (~20 Acres) Bexar County





# Stoner Ranch (~2,088 Acres) Uvalde County





## Stoner Ranch (~2,088 Acres) Uvalde County

- Located NW of Friday Ranch about 2 miles north of Contributing Zone
- Top 40% of Model
- Contains 1.75 miles of Nueces River; 1.4 miles of Miller Creek
- **Requesting Stage 1 Consideration**

