



SA CLIMATE READY ADVISORY COMMITTEES

Welcome & Land Acknowledgement



Medina River Natural Area – City of San Antonio

Meeting Norms



- **Stay Engaged** – stay present and pay attention even when you are shutting down
- **Speak Your Truth** – speak truths about our experiences
- **No Fixing** – it's important that we let each person in the room experience their own discomfort and not fix it for them
- **Experience Discomfort** – “Learn to become comfortable with the discomfort”
- **Take Risks** – the more you are willing to risk, the more potential you have to learn
- **Listen for Understanding** – try and understand where another person is coming from but be careful not to compare your experiences with another person's
- **Expect and Accept Non-Closure** – these are process conversations where greater awareness leads to future changes
- **Progressive Stacking for Equity in Participation**



Public Comment

Approval of Meeting Minutes



Individual Items for Consideration

Office of Sustainability

Staff Briefing



Chair & Vice-Chair Selection

- If interested, send resumes to Minerva.Defee@sanantonio.gov
- Additional Commitments
 - Work with OS staff to prep agendas
 - Participation in the other Advisory Committee
 - Required participation in the other Advisory Committee meetings
 - Potential additional meetings
 - Increased time commitment

Shared Drive & Virtual Collaboration

- SharePoint guidelines
 - Release of documents & resources
 - Peer info sharing
 - Archive
- Virtual Collaboration
 - Static → SharePoint
 - Real-time → Teams
 - Opportunity for increased efficiency
 - Open to both committees

Discussion



- What is needed to ensure the effectiveness of virtual collaboration?
- What sub-committees would need to be created?
- Is this a more equitable way to collaborate?

Texas Creative Introduction



Communication Update



Contract Details



PURPOSE

- Gather input, educate and empower community in alignment with SA Climate Ready, Climate Action and Adaptation Plan

TERMS

- One year not to exceed \$195,000
 - 20% of total in year one for subcontracted grassroots engagement (\$39,000)
 - Option to increase up to 40% in subsequent years
- 2 additional 1 year options

TOTAL FUNDING

- Total not to exceed \$585,000
 - Grassroots engagement (\$117,000 - \$195,000)

Grassroots Engagement



WHO

- Direct Service Organizations with experience working in traditionally underserved communities/neighborhoods

WHY

- Provides an essential avenue for input and awareness with the hardest to reach in our community

HOW

- Formalized “grant” application process

WHEN

- Draft RFP, receive grantee responses, award/kickoff in next 90 days



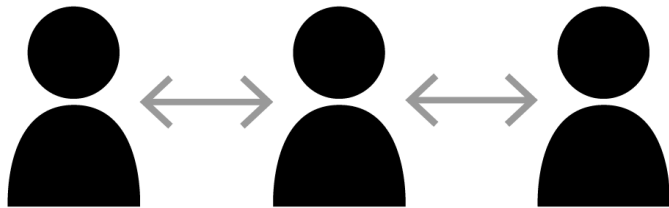
Target Audience

A diverse San Antonio population with a focus on historically under-represented communities.

Phased Approach



1 INPUT



Next 90 Days

2 EDUCATE



3 EMPOWER





90 Day Action Plan

PHASE 1: INPUT Primary & Secondary Listening Tools

Input Gathering – 3 parallel paths



Methodology for community listening – pre-messaging.

1 Equity: Subs Grant Process

1	Embracing the Gifts of Diversity
2	Realizing the Role of Race, Power, and Injustice
3	Radical Hospitality: Invitation and Listening
4	Trust-Building and Commitment
5	Honoring Dissent and Embracing Protest
6	Adaptability to Community Change

Equitable & Inclusive
Civic Engagement

2 Businesses: Large & Small



Relationship Building;
Advisory Committees

3 Masses: Quant Research

Issue	February 2020	April 2020	Difference
Lack of affordable housing	41%	53%	+12%
Low wages	53%	65%	+12%
The cost of healthcare	64%	75%	+11%
Climate change	42%	52%	+10%



BEXAR  FACTS

Attitudes, Awareness &
Perceptions Study

Thank you

Engagement



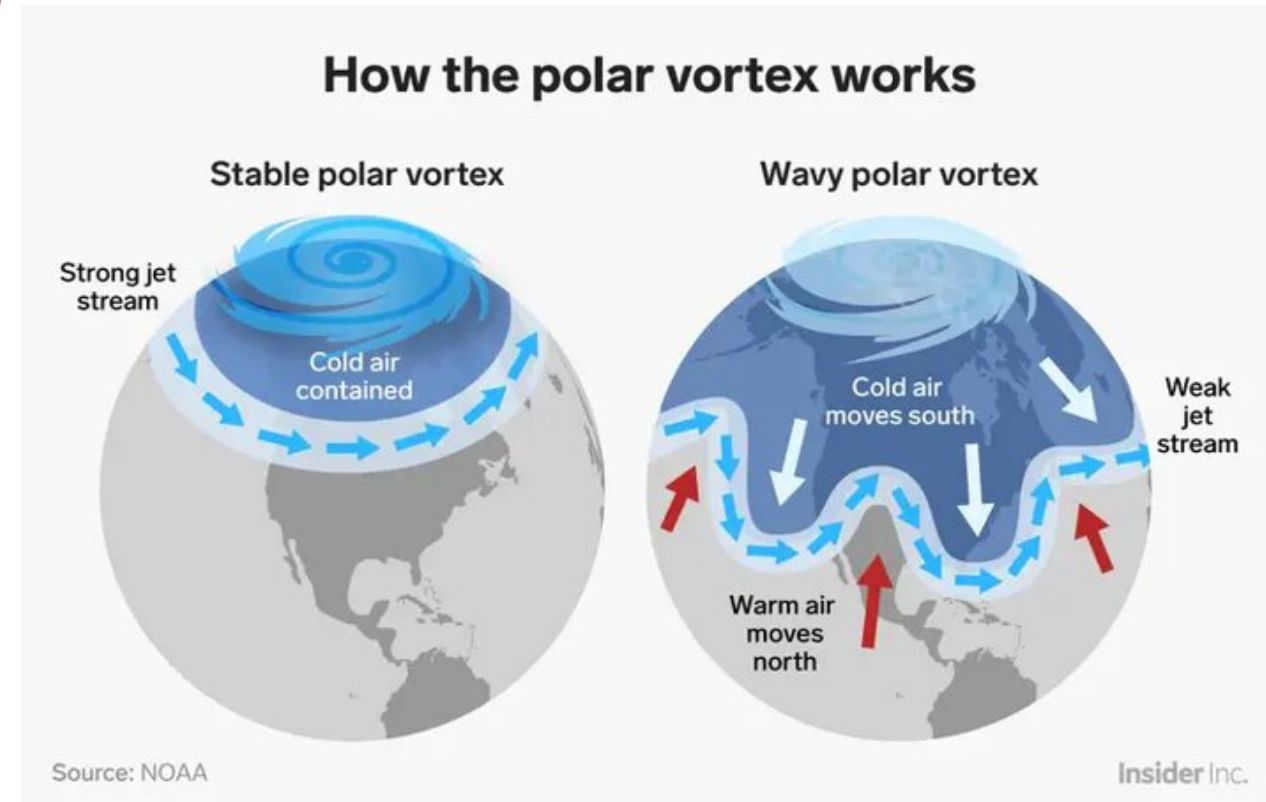
“

“Civic engagement is more than a collection of meetings, techniques, and tools. It takes place in an environment made up of diverse people, practices, conditions, and values. Our civic environments are where we derive our opportunities to succeed. Some communities have healthy, sustainable, and rich civic and built environments. Others suffered from decades of segregation and disinvestment, leaving residents segregated from opportunities and unable to strongly influence the policies that drive community investment.

As a result, residents in these communities have lost the structural and cultural supports necessary to ensure justice and to achieve successful outcomes in their lives. The result is that civic engagement is often viewed as a means of gathering consent for initiatives supported by those with wealth and power, rather than a vehicle for delivering civic power to the community.... For people to exercise their civic power and voice equitably, we must change the way we think about civic engagement, making transformative changes in our longstanding customs, assumptions, and institutions. It also means moving our conversations away from those that foster polarization and towards those that build relationships, foster mutual accountability, and strive for understanding among neighbors.”

— Kip Holley, *The Principles for Equitable and Inclusive Civic Engagement: A Guide to Transformative Change*

Climate Impacts



Paris Climate Agreement

On June 22, 2017, City Council passed Resolution No. 2017-06-22-0031R in support of the Paris Climate Agreement, directing city staff to develop a plan to help San Antonio meet the objectives of this agreement.

After extensive public input, City Council adopted the SA Climate Ready Plan by Ordinance 2019-10-17-0840 on October 17, 2019.

President Biden rejoined the accord on January 20, 2021.



United Nations
Climate Change

Office of Sustainability

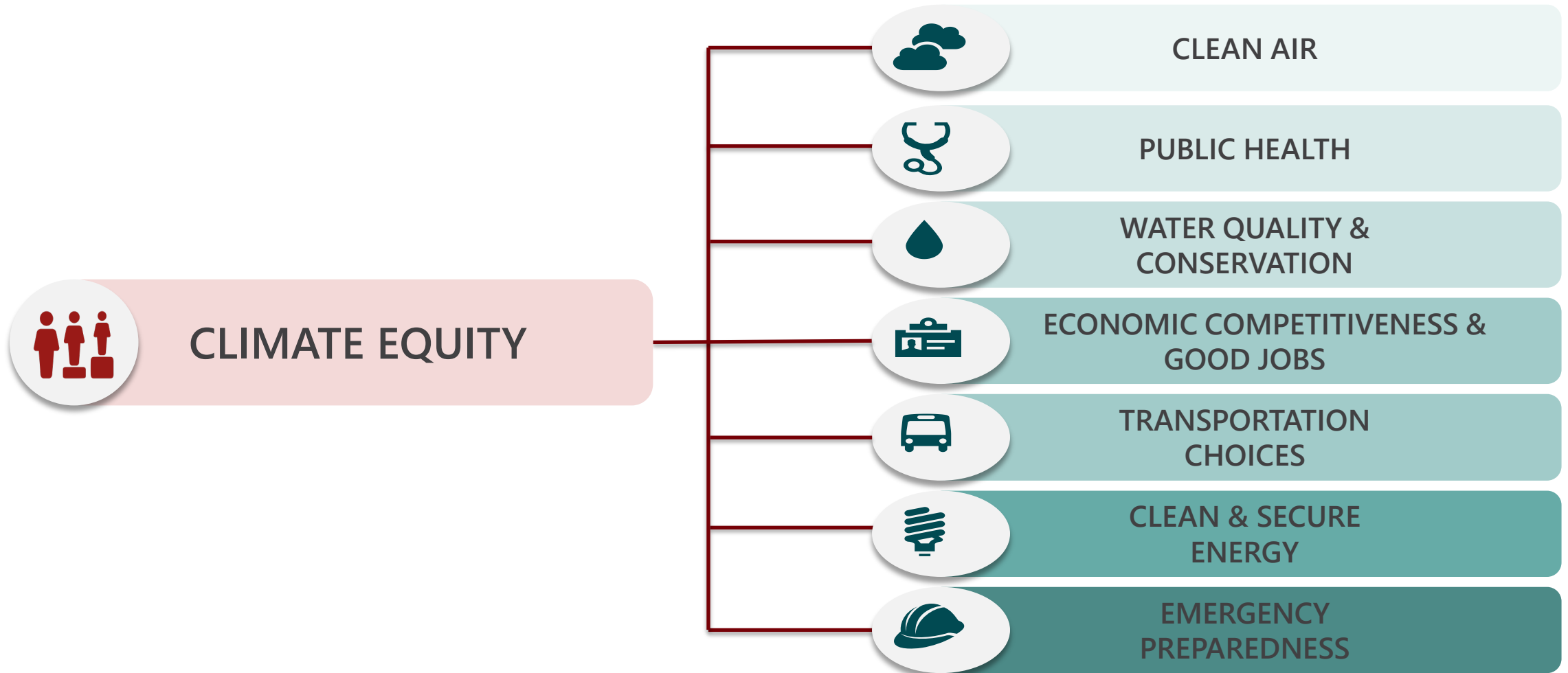


CoSA's Commitments

- Climate equity
- Carbon neutral by 2050
- Climate adaptation
- Reporting requirements



Climate Equity + the CAAP



Climate Projections

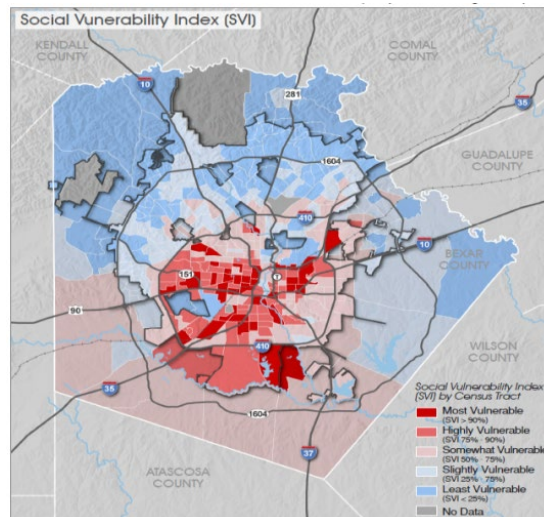


San Antonio End of Century	Low Emissions Pathway	High Emissions Pathway
Summer Maximum Temperature	+ 6° F	+ 10° F
Hot Days (Maximum Temperature >100° F)	+ 48 days	+ 94 days
Warm Nights (Minimum Temperature >80° F)	+ 10 nights	+ 55 nights
Annual Precipitation	- 3 inches	- 4 inches
+ Increased flooding + Increased extreme storms + Increased cold weather events		

Climate Equity + Adaptation for Extreme Events

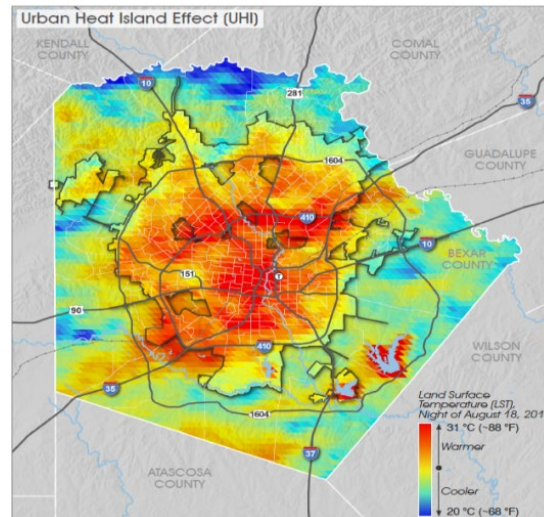
A climate equity framework prioritizes the communities burdened the most by climate change. Climate equity ensures these communities play a central role in the just transformation of the systems that have established, and continue to perpetuate, the unequal burden of climate impacts.

1 Most vulnerable population



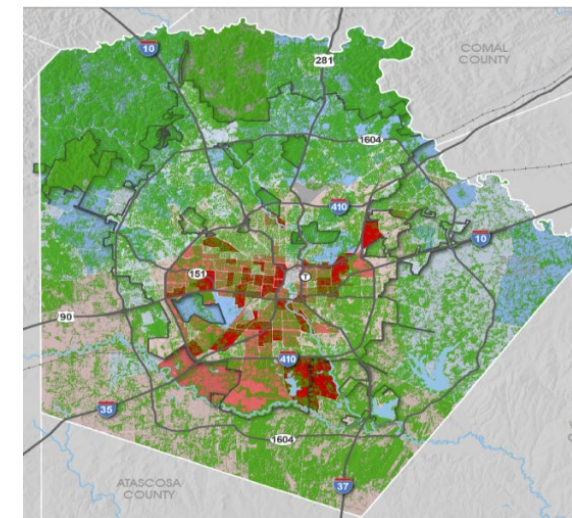
Social Vulnerability Index (SVI)

2 Hottest area of our city



Urban Heat Island Effect (UHI)

3 Lowest area of tree canopy



Social Vulnerability Index (SVI) with Tree Canopy

Why is equity important?



Climate change affects everyone, but not all people are impacted equally.



CoSA Office of Equity

Vulnerable communities

- Communities of color
- Low-income communities
- Seniors
- People with disabilities

Risk Factors

- Increased vulnerability to heat-related illnesses, respiratory illnesses, or vector borne diseases
- Increased risk to the impact of extreme cold and related impacts on housing lacking adequate weatherization
- Reduced mobility due to flooding, extreme weather, extreme heat and related impacts to transportation infrastructure
- High exposure to GHGs emission sources and environmental pollution
- Lack of representation in local government
- Lack of financial means to respond to environmental and economic stresses

Discussion



- Was the storm impact the same throughout San Antonio?
- Who was most affected?

Winter Storm 2021 and SA Climate Ready

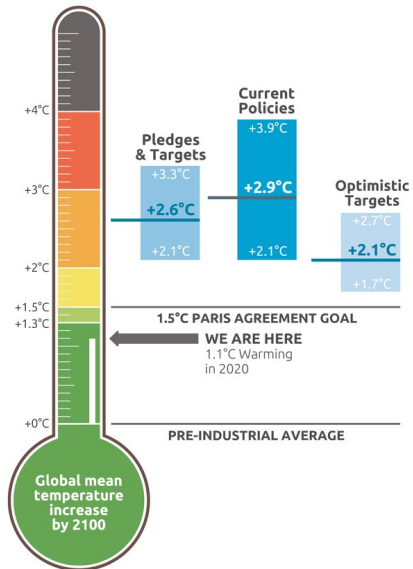


Addressing climate change requires mitigation and adaptation



MITIGATION

Actions to reduce or prevent emissions from greenhouse gases



Greenhouse Gas Reduction Strategies

- 1) Increase Carbon-Free Energy
- 2) Reduce Building Energy Consumption
- 3) Reduce Transportation Energy Consumption
- 4) Advance the Circular Economy
- 5) Promote Biodiversity and Healthy Ecosystems
- 6) Educate & Empower

- **28 Community Strategies**
- 12 Near-Term initiated by 2021
- **13 Municipal Strategies**

ADAPTATION

Actions that help reduce the negative effects of climate change

Adaptation Strategies

- 1) Increase Infrastructure Resilience
- 2) Strengthen Public Health Systems
- 3) Enhance Emergency Management & Community Preparedness
- 4) Promote, Restore, and Protect Green Infrastructure & Ecosystems
- 5) Protect Local Food Security
- 6) Increase Resiliency Awareness & Outreach
- 7) Ensure Equity in Adaptation

- **45 Community & Municipal Strategies**

Current Projects in Implementation



Community

Benchmarking & Disclosure

EV & Solar Readiness

Climate Youth Initiative

Property Assessed Clean Energy (PACE)

Climate Communications & Engagement Initiative

Grid Decarbonization

Community Resilience

Municipal

CAAP Departmental Consistency Documents

CoSA Leadership & Employee CAAP Training Program

Green Fleet Policy Update

100% Renewable Electricity for Municipal Operations

Urban Heat Island Mitigation

Municipal Energy Efficiency Projects

OS Racial Equity & Capacity Building

Sustainable Transportation

EVSA Public Information Campaign

Community EV Charging Infrastructure

Key SA Climate Ready Strategies



Mitigation

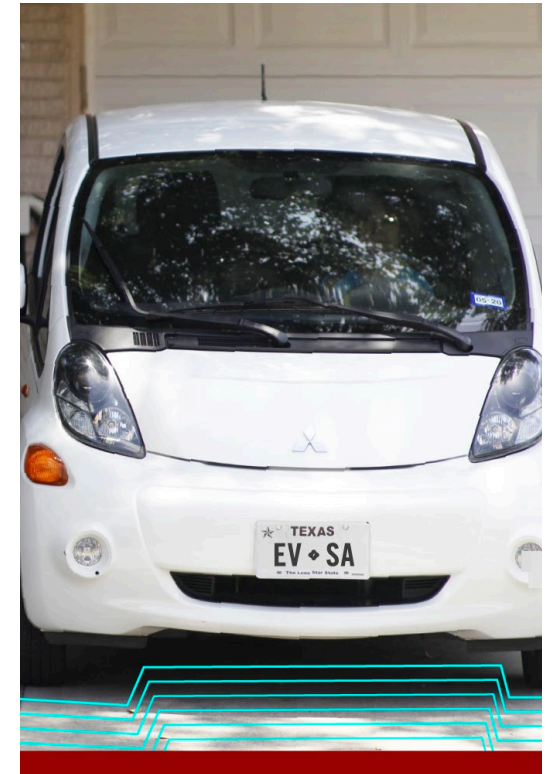
- M1–M3 – Increase Carbon-Free Energy
- M4 - Commercial and Multi-Family Benchmarking
- M6 - Zero Net Energy Building Codes
- M7 - Energy Efficiency Financing and Programs
- M12 - Sustainable Land Planning and Development
- M25 - Residential and Commercial Energy and Water Rating System
- M27 - Develop and Implement Framework for Regional Collaboration
- M28 - Electric and Water Rate Structures

Adaptation

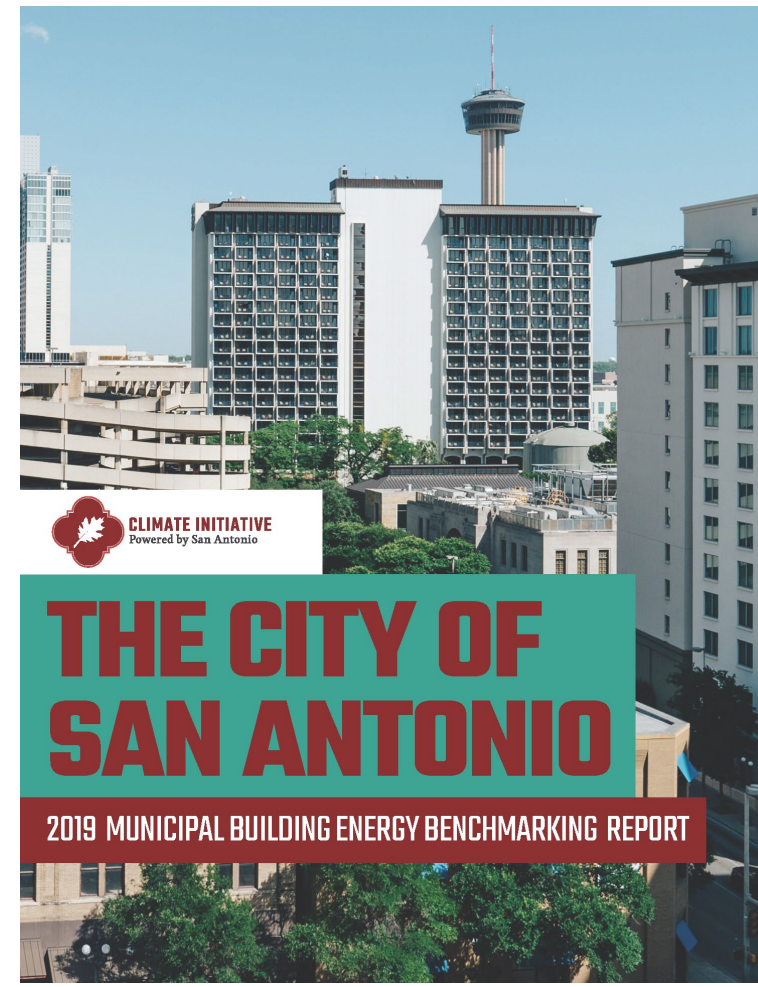
- A1 - Utility Preparedness for Climate Impacts
- A2 - Risk Assessment of Critical Infrastructure
- A6 - Building Retrofits for Vulnerable Populations
- A7 - Climate Risk in the Development Review Process
- A11 - Resilience in Building Codes and Programs
- A18 - Early Warning Systems
- A21 - Damage Cost Assessment Protocols
- A22 - Assess Emergency Shelter Policies & Resilience Hubs
- A23 - Emergency Planning for Vulnerable Groups
- A42 - Climate Resilience Education and Outreach
- A44 - Prioritization of Vulnerable Residents
- A45 - Anti-Displacement Measures

Equity Indicators & Data | Climate Equity Screening Mechanism

Homework



Data and Research



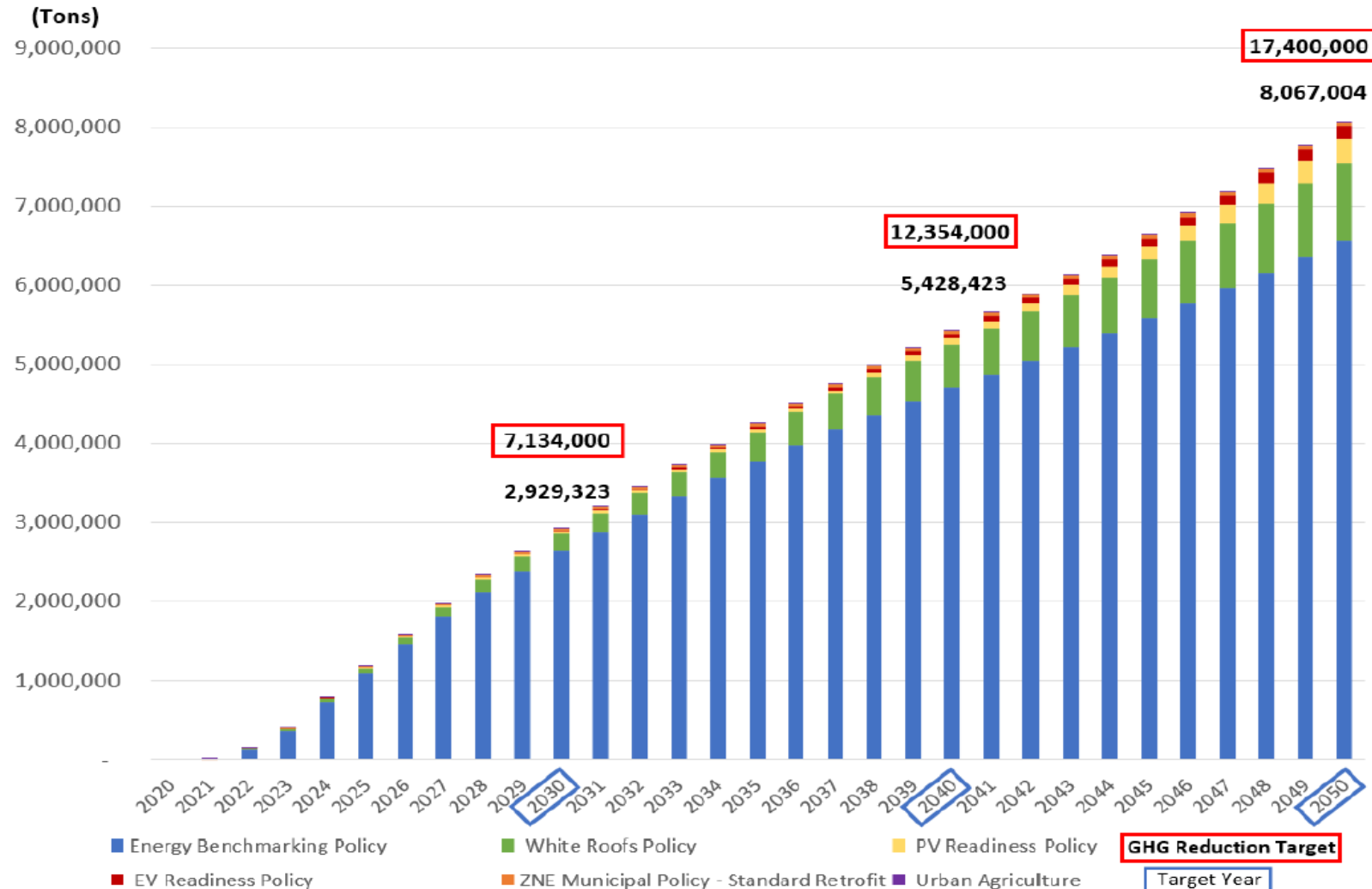
Cost-Benefit Analysis – Strategies



- Energy benchmarking for commercial and multi-family buildings;
- White roofs and energy insulation building code;
- Electric vehicle charger readiness building code;
- Solar readiness building code;
- Zero net energy in municipal buildings; and
- Incentivizing urban agriculture.



Cumulative CO2 Emissions Reduction



The CAAP goals support recovery & resilience



Human Health

- Protect San Antonians from detriments to health and well-being associated with a changing climate

Source: San Antonio Office of Equity



Resilience

- Build a city that can maintain normal function in response to external stresses and disruptions

Source: San Antonio Express / Billy Calzada



Economic growth

- Mitigate infrastructural losses attributed to climate change that impede the rate of economic growth

Source: City of San Antonio



Determination of Next Meeting Date

Adjournment

