

HISTORIC AND DESIGN REVIEW COMMISSION

March 17, 2021

HDRC CASE NO: 2021-114
ADDRESS: 314 E COURTLAND PLACE
LEGAL DESCRIPTION: NCB 2999 BLK 1 LOT 10
ZONING: R-6, H
CITY COUNCIL DIST.: 1
DISTRICT: Tobin Hill Historic District
APPLICANT: WALKER ABIGAIL S
OWNER: WALKER ABIGAIL S
TYPE OF WORK: Window replacement
APPLICATION RECEIVED: February 25, 2021
60-DAY REVIEW: Not Applicable Due to City Council Emergency Orders
CASE MANAGER: Rachel Rettaliata

REQUEST:

The applicant is requesting a Certificate of Appropriateness for approval to replace 10 existing wood windows with vinyl windows.

APPLICABLE CITATIONS:

Historic Design Guidelines, Chapter 2, Exterior Maintenance and Alterations

6. Architectural Features: Doors, Windows, and Screens

A. MAINTENANCE (PRESERVATION)

- i. *Openings*—Preserve existing window and door openings. Avoid enlarging or diminishing to fit stock sizes or air conditioning units. Avoid filling in historic door or window openings. Avoid creating new primary entrances or window openings on the primary façade or where visible from the public right-of-way.
- ii. *Doors*—Preserve historic doors including hardware, fanlights, sidelights, pilasters, and entablatures.
- iii. *Windows*—Preserve historic windows. When glass is broken, the color and clarity of replacement glass should match the original historic glass.
- iv. *Screens and shutters*—Preserve historic window screens and shutters.
- v. *Storm windows*—Install full-view storm windows on the interior of windows for improved energy efficiency. Storm window may be installed on the exterior so long as the visual impact is minimal and original architectural details are not obscured.

B. ALTERATIONS (REHABILITATION, RESTORATION, AND RECONSTRUCTION)

- i. *Doors*—Replace doors, hardware, fanlight, sidelights, pilasters, and entablatures in-kind when possible and when deteriorated beyond repair. When in-kind replacement is not feasible, ensure features match the size, material, and profile of the historic element.
- ii. *New entrances*—Ensure that new entrances, when necessary to comply with other regulations, are compatible in size, scale, shape, proportion, material, and massing with historic entrances.
- iii. *Glazed area*—Avoid installing interior floors or suspended ceilings that block the glazed area of historic windows.
- iv. *Window design*—Install new windows to match the historic or existing windows in terms of size, type, configuration, material, form, appearance, and detail when original windows are deteriorated beyond repair.
- v. *Muntins*—Use the exterior muntin pattern, profile, and size appropriate for the historic building when replacement windows are necessary. Do not use internal muntins sandwiched between layers of glass.
- vi. *Replacement glass*—Use clear glass when replacement glass is necessary. Do not use tinted glass, reflective glass, opaque glass, and other non-traditional glass types unless it was used historically. When established by the architectural style of the building, patterned, leaded, or colored glass can be used.
- vii. *Non-historic windows*—Replace non-historic incompatible windows with windows that are typical of the architectural style of the building.
- viii. *Security bars*—Install security bars only on the interior of windows and doors.

- ix. *Screens*—Utilize wood screen window frames matching in profile, size, and design of those historically found when the existing screens are deteriorated beyond repair. Ensure that the tint of replacement screens closely matches the original screens or those used historically.
- x. *Shutters*—Incorporate shutters only where they existed historically and where appropriate to the architectural style of the house. Shutters should match the height and width of the opening and be mounted to be operational or appear to be operational. Do not mount shutters directly onto any historic wall material.

Standard Specifications for Original Wood Window Replacement

- SCOPE OF REPAIR: When individual elements such as sills, muntins, rails, sashes, or glazing has deteriorated, every effort should be made to repair or reconstruct that individual element prior to consideration of wholesale replacement. For instance, applicant should replace individual sashes within the window system in lieu of full replacement with a new window unit.
- MISSING OR PREVIOUSLY-REPLACED WINDOWS: Where original windows are found to be missing or previously-replaced with a nonconforming window product by a previous owner, an alternative material to wood may be considered when the proposed replacement product is more consistent with the Historic Design Guidelines in terms of overall appearance. Such determination shall be made on a case-by-case basis by OHP and/or the HDRC. Whole window systems should match the size of historic windows on property unless otherwise approved.
- MATERIAL: If full window replacement is approved, the new windows must feature primed and painted wood exterior finish. Clad, composition, or non-wood options are not allowed unless explicitly approved by the commission.
- SASH: Meeting rails must be no taller than 1.25". Stiles must be no wider than 2.25". Top and bottom sashes must be equal in size unless otherwise approved.
- DEPTH: There should be a minimum of 2" in depth between the front face of the window trim and the front face of the top window sash. This must be accomplished by recessing the window sufficiently within the opening or with the installation of additional window trim to add thickness.
- TRIM: Original trim details and sills should be retained or repaired in kind. If approved, new window trim must feature traditional dimensions and architecturally appropriate casing and sloped sill detail. Window track components such as jamb liners must be painted to match the window trim or concealed by a wood window screen set within the opening.
- GLAZING: Replacement windows should feature clear glass. Low-e or reflective coatings are not recommended for replacements. The glazing should not feature faux divided lights with an interior grille. If approved to match a historic window configuration, the window should feature real exterior muntins.
- COLOR: Replacement windows should feature a painted finished. If a clad product is approved, white or metallic manufacturer's color is not allowed, and color selection must be presented to staff.
- INSTALLATION: Replacement windows should be supplied in a block frame and exclude nailing fins. Window opening sizes should not be altered to accommodate stock sizes prior to approval.
- FINAL APPROVAL: If the proposed window does not meet the aforementioned stipulations, then the applicant must submit updated window specifications to staff for review, prior to purchase and installation. For more assistance, the applicant may request the window supplier to coordinate with staff directly for verification.

FINDINGS:

- a. The property located at 314 E Courtland is a 1-story, single-family home constructed in 1910 in the Folk Victorian style. The structure features a rectangular plan, a composition shingle hip roof with a front gable, a deep-set front porch with simplified wood columns, wood siding, and original one-over-one wood windows. The property is contributing to the Tobin Hill Historic District.
- b. SITE VISIT – Staff requested a site visit prior to the March 17th HDRC hearing. As of Friday, March 12th, a site visit has not been scheduled. Following review of the photos and materials submitted, staff finds that the existing windows may feature minor water damage, uneven sashes or missing sash elements, and peeling or chipping paint. Some of the existing windows may require reglazing or the reworking of the sashes. The submitted photos do not clearly show significant wood rot, wood damage, or severe deterioration. A site visit should be conducted to confirm the current condition of the existing windows.
- c. ENERGY EFFICIENCY – The applicant has expressed concern to staff regarding the need to improve the energy efficiency of the house. However, in most cases, windows only account for a fraction of heat gain/loss in a house. Improving the energy efficiency of historic windows should be considered only after other options have

been explored such as improving attic and wall insulation. Products are available to reduce heat transfer such as window films, interior storm windows and thermal shades. Additionally, air infiltration can be mitigated through weatherstripping or readjusting the window assembly within the frame, as assemblies can settle or shift over time. In most cases, windows may also be retrofitted with new glass. In general, staff encourages the repair of historic wood windows. A wood window that is maintained over time can last for decades. Replacement window products have a much shorter lifespan and cannot be repaired once they fail.

- d. WINDOW REPLACEMENT – The applicant has proposed to replace 10 existing wood windows with vinyl replacement windows. The decorative window on the west side of the front façade is not requested for replacement at this time. Guideline 6.B.iv for Exterior Maintenance and Alterations states that new windows should be installed to match the historic or existing windows in terms of size, type, configuration, material, form, appearance, and detail when original windows are deteriorated beyond repair. Staff finds that the existing windows are repairable and that the replacement product is not appropriate or consistent with the Guidelines.

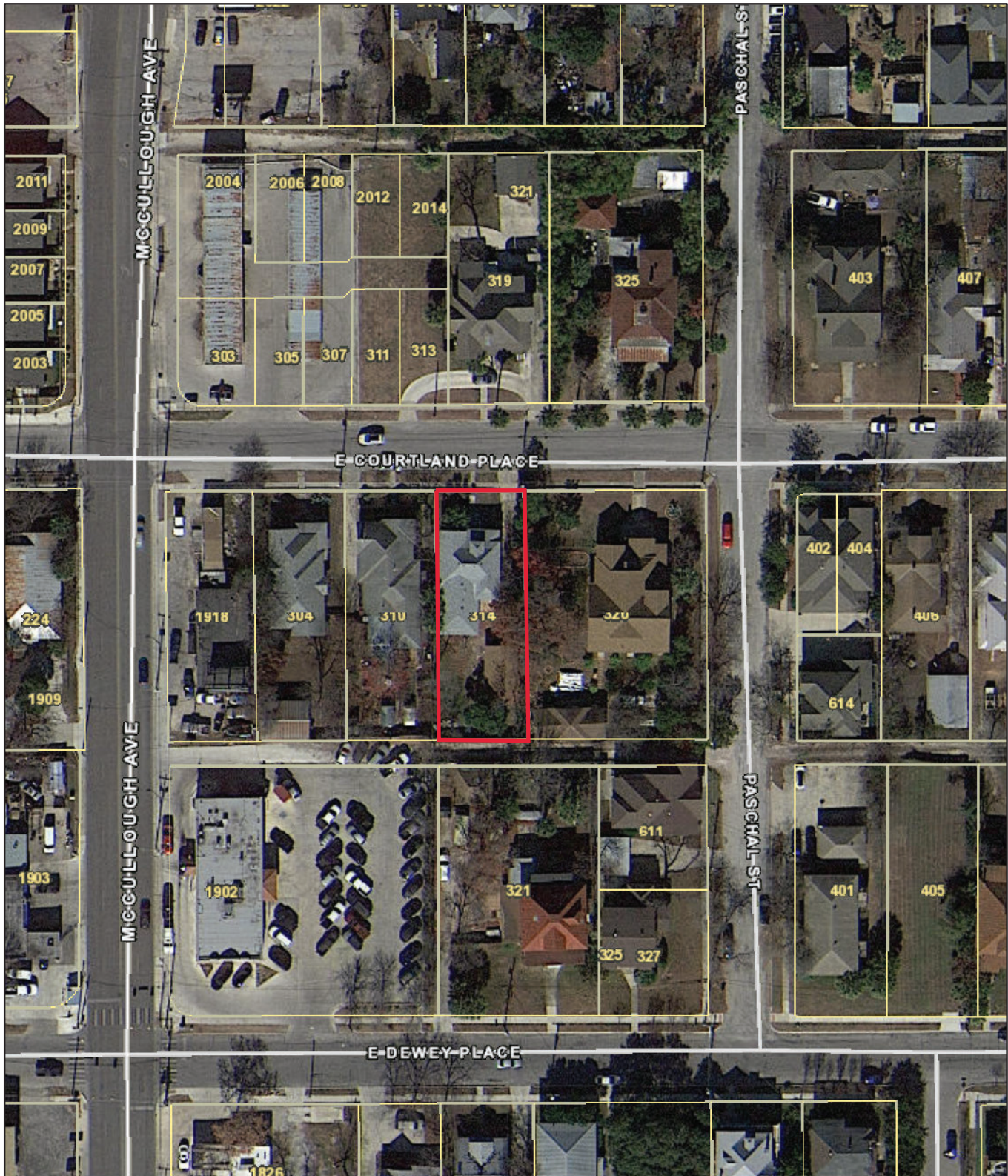
RECOMMENDATION:

Staff does not recommend approval based on findings a through d.

If the HDRC is compelled to approve window replacement, staff recommends the following stipulation:

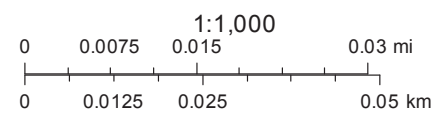
- i. That the applicant installs fully wood windows that meet staff's standard window stipulations and submits updated specifications to staff for review and approval. The windows should feature an inset of two (2) inches within facades and should feature profiles that are found historically within the immediate vicinity. Meeting rails must be no taller than 1.25" and stiles no wider than 2.25". White manufacturer's color is not allowed, and color selection must be presented to staff. There should be a minimum of two inches in depth between the front face of the window trim and the front face of the top window sash. This must be accomplished by recessing the window sufficiently within the opening or with the installation of additional window trim to add thickness. Window trim must feature traditional dimensions and architecturally appropriate sill detail. Window track components must be painted to match the window trim or concealed by a wood window screen set within the opening.

City of San Antonio One Stop

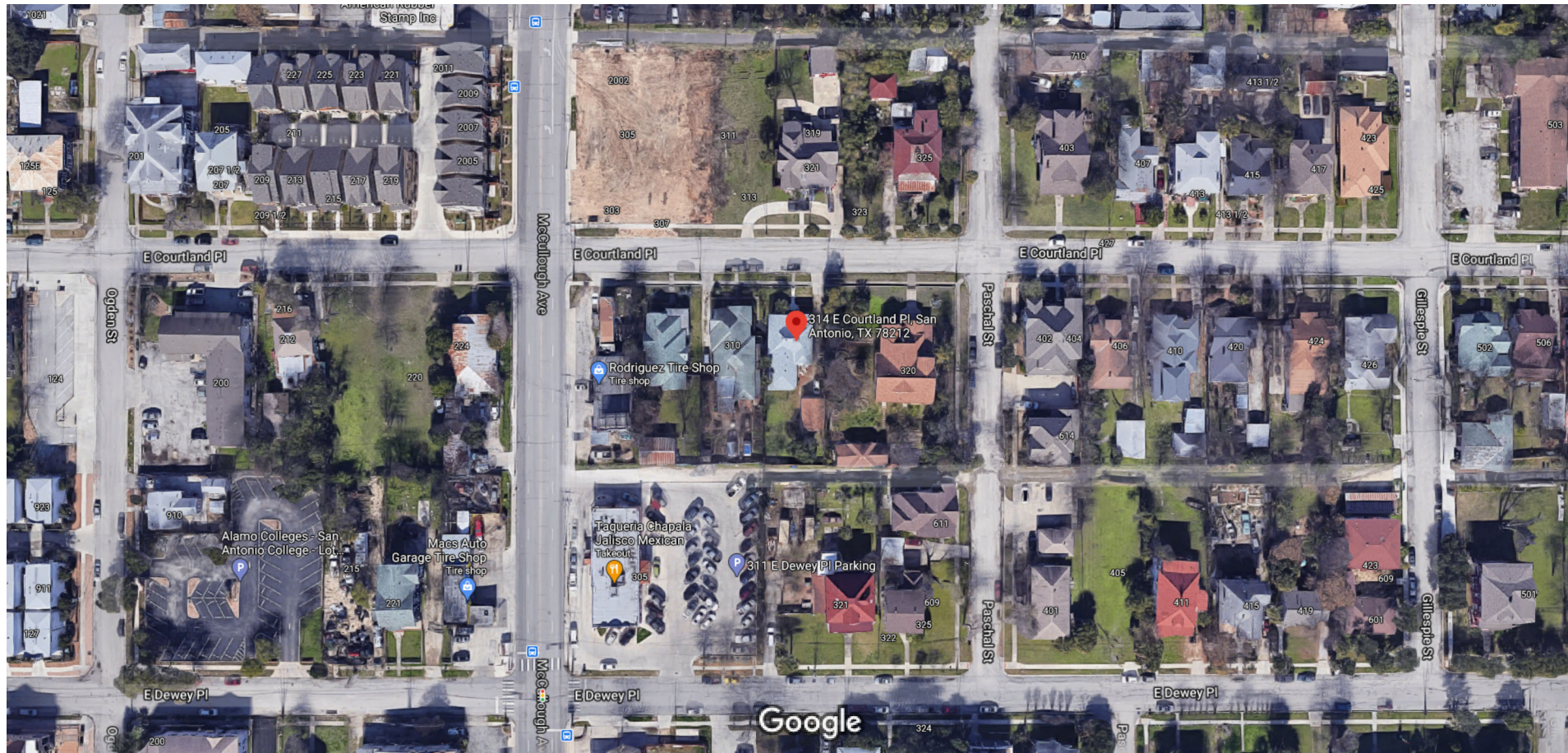


March 12, 2021

— User drawn lines

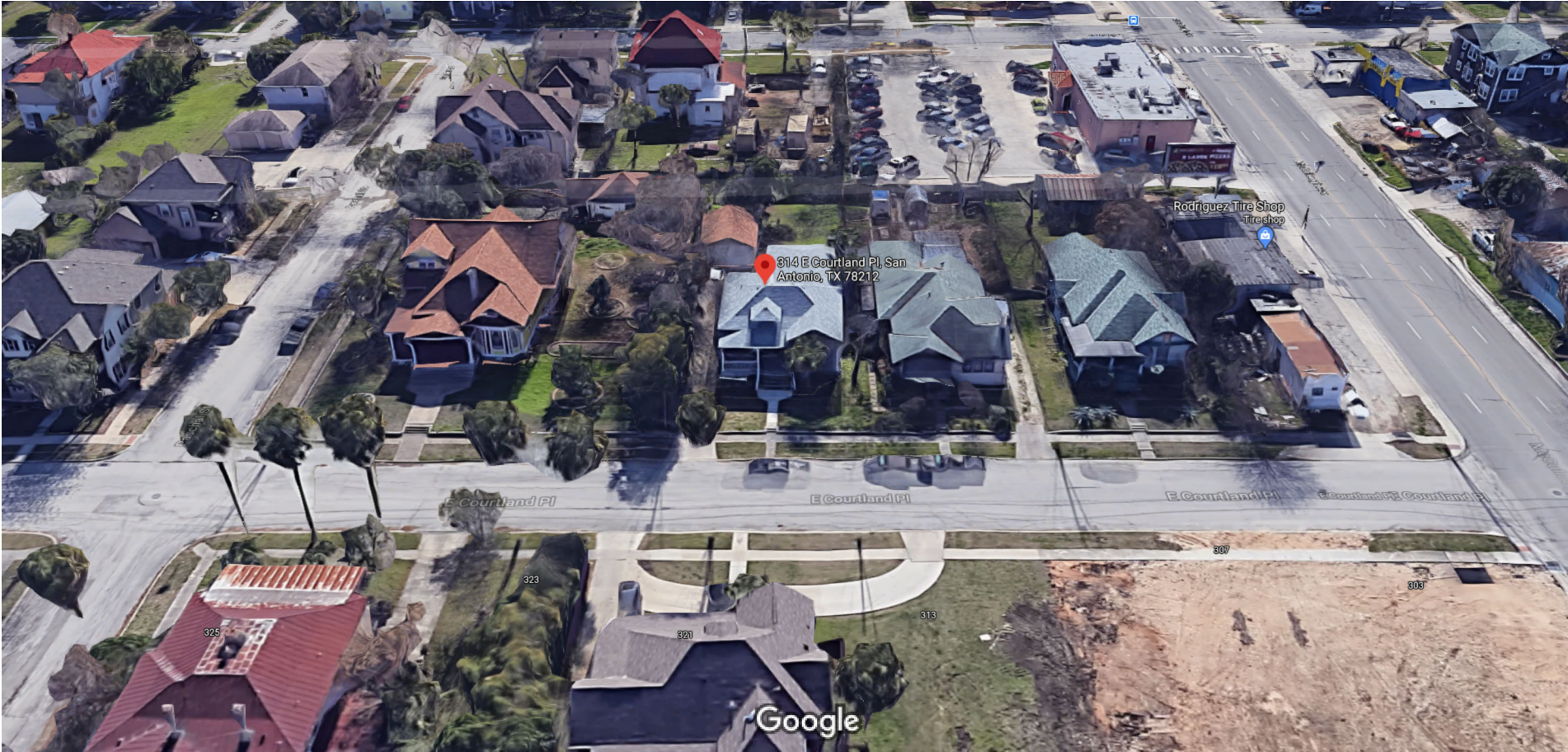


Google Maps 314 E Courtland Pl



Imagery ©2021 Google, Imagery ©2021 CNES / Airbus, Maxar Technologies, Map data ©2021 Google 50 ft

Google Maps 314 E Courtland Pl



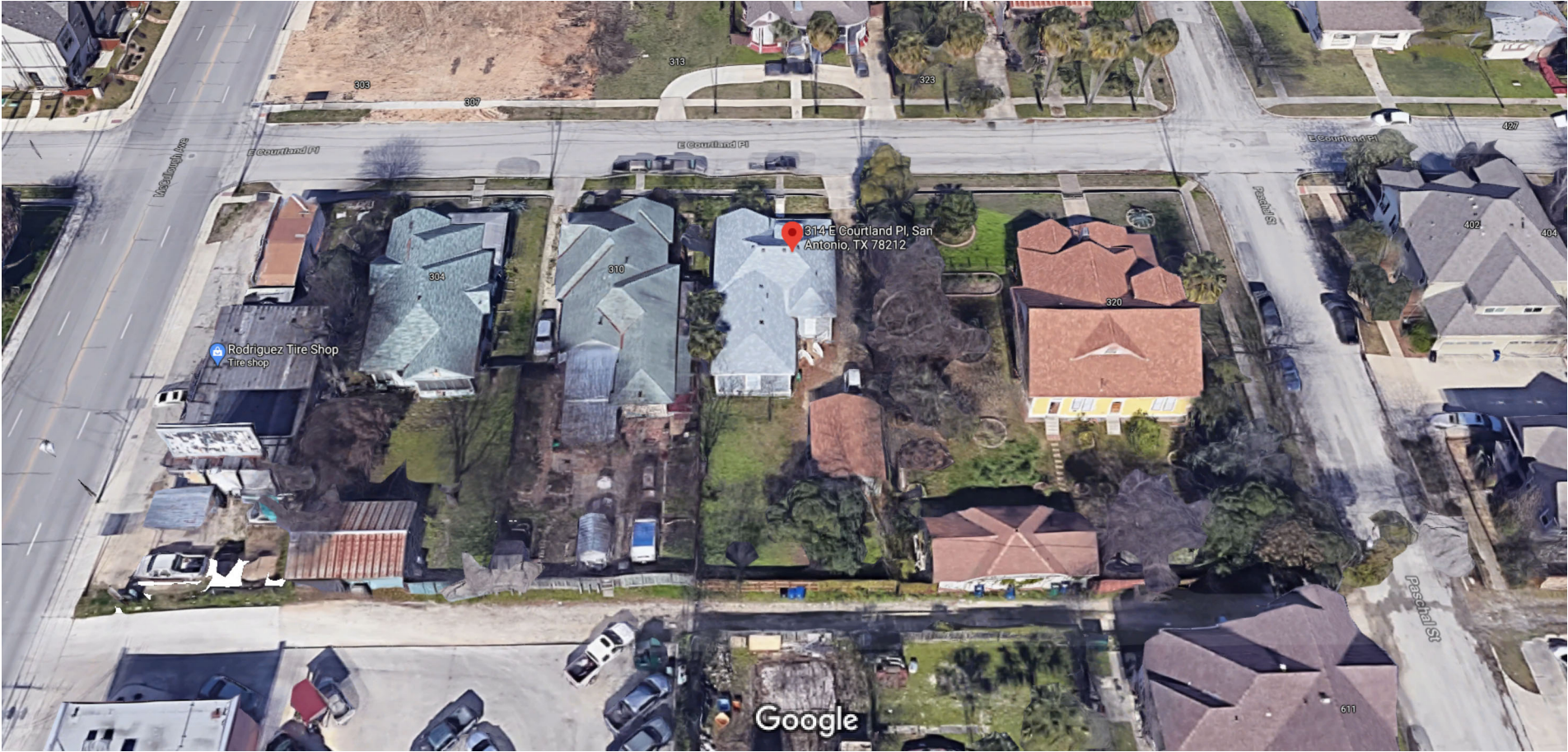
Imagery ©2021 Google, Map data ©2021 , Map data ©2021 Google 20 ft

Google Maps 314 E Courtland Pl



Imagery ©2021 Google, Map data ©2021 , Map data ©2021 Google 20 ft

Google Maps 314 E Courtland Pl



Imagery ©2021 Google, Map data ©2021 , Map data ©2021 Google 20 ft

Google Maps 314 E Courtland Pl



Imagery ©2021 Google, Map data ©2021 , Map data ©2021 20 ft











Job #:

Customer: Abbey Walker

Date: 2/24/21

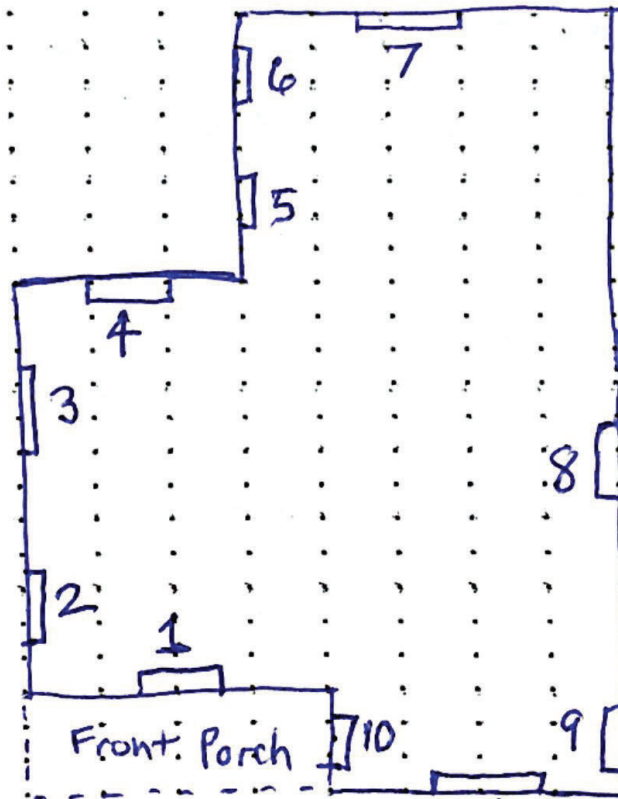
Consultant: David Sykes

Consultant Cell Nos:

Install: Seamless Aluminum 5" or 6" Gutter with Standard or Commercial Downspouts

SKETCH ENTIRE ROOF

314 E Courtland Place, San Antonio, Tx 78212



Not Doing

Key Code E; Courtland Place STREET SIDE





















6500

Series Double Hung



6500 Series WINDOWS

Uncompromising Curb Appeal

- Deeply beveled, miter-cut sashes create the rich stylish look of a real wood window
- Triple-Step Sloped Sill on double hung windows offers a classic exterior while providing a watertight seal against driving rain
- Low gloss exterior always looks freshly painted

Beyond Simple Aesthetics

- Thick, multi-chambered construction provides superior structural integrity and increased insulating performance
- Fusion welding of the sash and frame creates a weathertight fit
- Reinforced interlocking center rail virtually eliminates air and water infiltration
- 100% vinyl means no peeling, cracking, fading, or corroding

Easy Operation

- Low-profile tilt latches allow both sashes to tilt in for effortless cleaning
- Constant Force Balance System along with contoured rails molded into the sash for smooth and effortless operation

QUESTIONS? CONTACT US



CALL
1-877-903-3768



CLICK
MyHomeDepotProject.com



WINDOW CARE AND MAINTENANCE

Congratulations on choosing windows and doors that offer the easy care and maintenance of vinyl. Vinyl won't pit, peel or chalk over time. As a result, with simple care and cleaning, your windows can keep their beautiful appearance for years to come.

- Wash using mild detergent (if necessary) and a soft cloth or ordinary long-handled soft bristle brush. Do not wash the windows or doors with a high pressure spray. The extreme pressure could crack or destroy the caulking around the window or door
- For difficult to remove dirt and stains, use readily available household cleaners
- In some cases you may wish to use a mildly abrasive cleaner such as Soft Scrub® but the use of any abrasive material could scratch the surface of the glass and window or door frame
- Do not use liquid grease remover, strong soaps and detergents containing organic solvents, nail polish remover, furniture polish or cleaners containing chlorine bleach. These items could affect the surface appearance of the vinyl



HDE-100

400 SERIES

**TIME-TESTED, CLASSIC WOOD
CRAFTSMANSHIP**





400 SERIES WINDOWS & PATIO DOORS

As our most popular and longest-standing product line, the 400 Series brings you the best overall blend of performance and style to satisfy just about any window or patio door need. With years of engineering and craftsmanship to build on, 400 Series windows and patio doors are designed to live up to your high standards. Plus, with a broad array of shapes, style and colors to choose from, you can achieve the style you've envisioned for your home while having peace of mind knowing they're backed by our renowned Owner-2-Owner® limited warranty. With Andersen® 400 Series products, have confidence knowing you will be getting the quality and performance in which Andersen built its reputation. For more information, visit andersenwindows.com/400series.





MATCH ANY HOME DESIGN

From contemporary design to traditional and classic architecture, 400 Series products offer a time-tested blend of engineering and craftsmanship, combined with a variety of style options that can elevate a classic wood window into a stunning focal point in any home style. Visit our Home Style Library at andersenwindows.com/stylelibrary.



CONTEMPORARY DESIGN

Contemporary home design embraces minimalism and simplicity – clean lines, glass that stretches floor-to-ceiling and sleek, dark colors. Large windows and combinations allow you to enjoy stunning vistas and bring the outdoors in.



CASEMENT & AWNING WINDOWS

Enhance your view and create stunning combinations by grouping together casement and/or awning windows. Casement windows hinge on the side and crank open outward allowing for full top to bottom ventilation. Awning windows are hinged at the top and open outward from the bottom allowing for ventilation and protection from the rain.

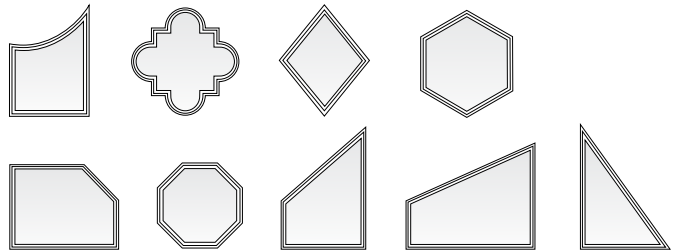
- Low-maintenance Perma-Shield® exterior cladding protects the unit and offers long-lasting* weathertight performance
- Smooth control hardware allows for easy operation with the simple turn of the handle
- Available in custom sizes for replacement projects
- Single-actuation lock secures casement windows at multiple points with a single handle and features a “reach out” action that pulls the sash in for a weathertight seal



SPECIALTY WINDOWS

Create large combinations with specialty windows to maximize light and view. Specialty windows are stationary windows that come in a variety of uncommon shapes, including elegant arches, striking angles and compelling curves to add curb appeal or enhance the character of your home. Flexiframe® windows are designed in nearly any shape made with straight lines, provided no angle is less than 14 degrees.

- Low-maintenance Perma-Shield exterior cladding protects the unit and offers long-lasting* weathertight performance
- Available in custom sizes



Examples of available shapes.

For contemporary patio door options, visit andersenwindows.com/doors.

*Visit andersenwindows.com/warranty for details.



TRADITIONAL DESIGN

Traditional home design remains true to the history, authenticity and character of home styles that date back decades or even centuries. The classic design of Andersen® 400 Series windows and patio doors complement traditional style homes.



Double-hung windows have two operating sash (glass panels) that move up and down allowing for ventilation on the top, bottom or both.

DOUBLE-HUNG WINDOWS

Bring fresh air in while not interfering with patios or walkways. Plus, with tilt-in features, cleaning double-hung windows from inside your home is easy. Woodwright® double-hung windows are built with authentic craftsmanship to help replicate the look of classic architecture. They allow you to retain or add charm to your home with beautiful wood interiors and an array of style options. Tilt-wash double-hung windows offer classic styling with thinner profiles and the perfect balance of modern and traditional design. Their classic blend of engineering and craftsmanship, along with energy efficiency, makes them our best-selling double-hung window.

- Low-maintenance exterior cladding protects the unit while wood interiors offer beauty and warmth
- Dual layer weatherstrip helps seal out dust, wind and water
- Available in custom size insert windows for easy replacement or full-frame windows for new construction and remodeling projects



PATIO DOORS

Designed to bring nature's beauty inside while enhancing the style and personality of your home. Frenchwood® hinged inswing patio doors are designed to open into a room and save space for smaller exterior areas. Frenchwood gliding patio doors are ideal for any climate, they glide horizontally so not to interfere with your room.

- Experience smooth, long-lasting* operation with adjustable ball-bearing rollers and a durable stainless-steel capped track on gliding doors. Hinged doors feature adjustable hinges, so you can easily fine tune the position of our door panel.
- Weatherstrip is designed to seal out air and water infiltration
- Secure locking systems tighten the door against the frame for improved security and weather protection
- Optional blinds-between-the-glass offer privacy and are protected from dust and damage and never need cleaning
- Available in custom sizes for replacement projects

*Visit andersenwindows.com/warranty for details.

GLASS OPTIONS

Glass can affect energy efficiency more than any other part of a window or patio door — and not all glass performs the same. Andersen offers one of the industry's widest array of glass options, so you're sure to find the right choice for your climate and your home. Choose from these High-Performance glass options.

| GLASS | | ENERGY | | LIGHT | |
|----------------------------------|--|---|--|---|---|
| | | U-Factor | Solar Heat Gain Coefficient | Visible Light Transmittance | UV Protection |
| | | How well a product prevents heat from escaping. | How well a product blocks heat caused by sunlight. | How much visible light comes through a product. | How well a product blocks ultraviolet rays. |
| SmartSun™ | Thermal control similar to tinted glass, with visible light transmittance similar to Low-E4 glass. | ● ● ● ○ | ● ● ● ● | ● ● ● ○ | ● ● ● ● |
| SmartSun with HeatLock® Coating | Applied to the room-side surface, it reflects heat back into the home and improves U-Factors. | ● ● ● ● | ● ● ● ● | ● ● ○ ○ | ● ● ● ● |
| Low-E4® | Outstanding overall performance for climates where both heating and cooling costs are a concern. | ● ● ● ○ | ● ● ● ○ | ● ● ● ○ | ● ● ● ○ |
| Low-E4 with HeatLock Coating | Applied to the room-side surface, it reflects heat back into the home and improves U-Factors. | ● ● ● ● | ● ● ● ○ | ● ● ● ○ | ● ● ● ○ |
| Sun | Outstanding thermal control in southern climates where less solar heat gain is desired. | ● ● ● ○ | ● ● ● ● | ● ○ ○ ○ | ● ● ● ○ |
| PassiveSun® | Ideal for northern, passive solar construction applications where solar heat gain is desired. | ● ● ● ○ | ● ○ ○ ○ | ● ● ● ○ | ● ● ● ○ |
| PassiveSun with HeatLock Coating | Applied to the room-side surface, it reflects heat back into the home and improves U-Factors. | ● ● ● ○ | ● ○ ○ ○ | ● ● ● ○ | ● ● ● ○ |
| Clear Dual-Pane | High visibility with basic thermal performance. | ● ○ ○ ○ | ○ ○ ○ ○ | ● ● ● ● | ○ ○ ○ ○ |

Center of glass performance only. Ratings based on glass options as of March 2019. Visit andersenwindows.com/energystar for ENERGY STAR® map and NFRC total unit performance data.



Additional glass options are also available. Visit andersenwindows.com/glass or see your Andersen supplier.

ADDITIONAL GLASS OPTIONS

Blinds-between-the-glass are available on select Frenchwood® gliding and hinged patio doors.

Tempered safety glass, standard on patio doors.

Laminated glass for added strength, enhanced security and sound control.

Patterned glass lets in light while obscuring vision and adds a unique, decorative touch. Cascade and Reed patterns can be ordered with either a vertical or horizontal orientation.



Cascade



Fern



Obscure



Reed

ART GLASS

With art glass from Andersen, you can add interest, create focal points and make your work stand out. These finely crafted inserts are available in two distinctly different series — Classic and Artisan — to complement any home's architecture. For more information, visit andersenwindows.com/artglass.



STORMWATCH® PROTECTION

Most Andersen 400 Series windows are available with impact-resistant glass and structural upgrades to meet the tough building codes of hurricane-prone coastal areas. See your local code official for specific requirements. Visit andersenwindows.com/coastal for more details.

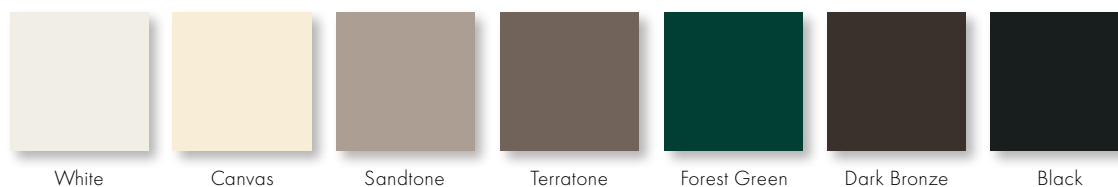




EXTERIOR & INTERIOR OPTIONS

Our Perma-Shield® exterior cladding system, a time-tested Andersen innovation, offers low maintenance and durability while also providing an attractive appearance. The interiors of all 400 Series windows and patio doors are available in unfinished stain-grade pine or with a long-lasting, low-maintenance white finish. Select windows are also available with a dark bronze or black** finish. 400 Series Woodwright® windows and Frenchwood® patio doors are also available with unfinished oak or maple interiors.

EXTERIOR COLORS



INTERIOR OPTIONS**



Design your window at
andersenwindows.com/design-tool

*Visit andersenwindows.com/warranty for details.

**Some products are not available in all colors or wood species. See your Andersen supplier for details.

†Dark bronze and black interior units have matching exteriors.

‡Not available on 400 Series Woodwright double-hung windows.

Printing limitations prevent exact replication of colors and finishes. See your Andersen supplier for actual color and finish samples.

GRILLE OPTIONS

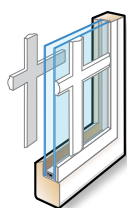
A variety of grille patterns, widths and configurations fit any architectural style and help you create your vision. When remodeling or replacing, they play an important role in preserving the style of your home which is why we also offer custom patterns.



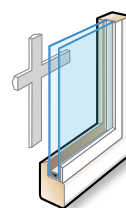
Permanent exterior
Permanent interior
with spacer



Permanent
exterior
Permanent
interior



Permanent
exterior
Removable
interior



Removable
interior



Finelight™
Grilles-
Between-
the-Glass*

FULL DIVIDED LIGHT

Permanently applied to the interior and exterior of your window with a spacer between the glass.

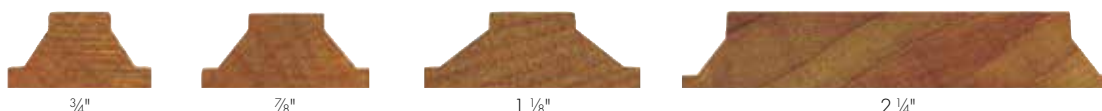
SIMULATED DIVIDED LIGHT

Permanent grilles on the exterior and interior with no spacer between the glass. We also offer permanent exterior grilles with removable interior grilles.

CONVENIENT CLEANING OPTIONS

Removable interior grilles come off for easy cleaning. Finelight™ grilles-between-the-glass are installed between the glass panes and feature a contoured $\frac{3}{4}$ " or 1" profile.

Grille Bar Widths



Our 2 1/4" wide grille can be positioned horizontally across the center of a casement window to simulate the look of a double-hung window.

Cross section of grilles showing standard widths and profiles. Additional patterns available, see your Andersen supplier for details.

INSECT SCREEN OPTIONS

Choose our TruScene® insect screen for a beautifully unobstructed view with 400 Series windows. TruScene insect screens let in over 25% more fresh air and provide 50% greater clarity than conventional Andersen insect screens, all while keeping out unwanted small insects.

Conventional aluminum insect screens are also available for 400 Series windows. 400 Series patio doors are available with conventional fiberglass insect screens.



* $\frac{7}{8}$ ", 1 $\frac{1}{8}$ " and 2 $\frac{1}{4}$ " not available in Finelight grilles-between-the-glass.





WINDOW HARDWARE

Whether replacing, remodeling or building new, our hardware* options enhance your home's decor. Choose from a variety of styles ranging from traditional and classical to simple and contemporary. For peace of mind, VeriLock® security sensors and wireless open/closed sensors are available on select products. To learn more, visit andersenwindows.com/connect.

Woodwright® Double-Hung

STANDARD



Antique Brass | **Black** | Bright Brass | Brushed Chrome
Distressed Bronze | Distressed Nickel | Gold Dust
Oil Rubbed Bronze | Polished Chrome | Satin Nickel
Stone | White

Tilt-Wash Double-Hung

STANDARD



Standard: Stone | White
Optional: Black | **Gold Dust**

ESTATE™



Antique Brass | **Bright Brass** | Brushed Chrome
Distressed Bronze | Distressed Nickel
Oil Rubbed Bronze | Polished Chrome | Satin Nickel

Estate lock & keeper is available only for 400 Series tilt-wash double-hung windows.

Double-Hung Sash Lifts

TRADITIONAL



Bar Lift



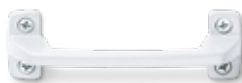
Finger Lift



Hand Lift

Antique Brass | Black | Bright Brass | Brushed Chrome | Distressed Bronze
Distressed Nickel | Gold Dust | **Oil Rubbed Bronze** | Polished Chrome
Satin Nickel | Stone | White

CLASSIC™



Bar Lift



Finger Lift



Hand Lift

Stone | White

Classic double-hung sash lifts are only available for 400 Series Woodwright double-hung windows.

CONTEMPORARY



Bar Lift

Antique Brass | Black
Bright Brass | Brushed Chrome
Distressed Bronze | **Distressed Nickel**
Gold Dust | Oil Rubbed Bronze
Polished Chrome | Satin Nickel
Stone | White

ESTATE



Hand Lift



Finger Lift

Antique Brass | **Bright Brass**
Brushed Chrome | Distressed Bronze
Distressed Nickel | Oil Rubbed Bronze
Polished Chrome | Satin Nickel

Estate double-hung sash lifts are only available for 400 Series Woodwright double-hung windows.

Gliding



Antique Brass | Black
Bright Brass | **Brushed Chrome**
Distressed Bronze | Distressed Nickel
Oil Rubbed Bronze | Polished Chrome
Satin Nickel | Stone | White

Casement & Awning

ESTATE



Antique Brass | Bright Brass | Brushed Chrome
Distressed Bronze | Distressed Nickel
Oil Rubbed Bronze | Polished Chrome | Satin Nickel

CLASSIC



Stone | White

CONTEMPORARY FOLDING



Black | Bright Brass | Gold Dust | Oil Rubbed Bronze
Satin Nickel | Stone | White

TRADITIONAL FOLDING



Antique Brass | Black | Bright Brass
Distressed Bronze | Distressed Nickel | Gold Dust
Oil Rubbed Bronze | Satin Nickel | Stone | White

Folding handles avoid interference with window treatments.

*Hardware is sold separately, except standard hardware.

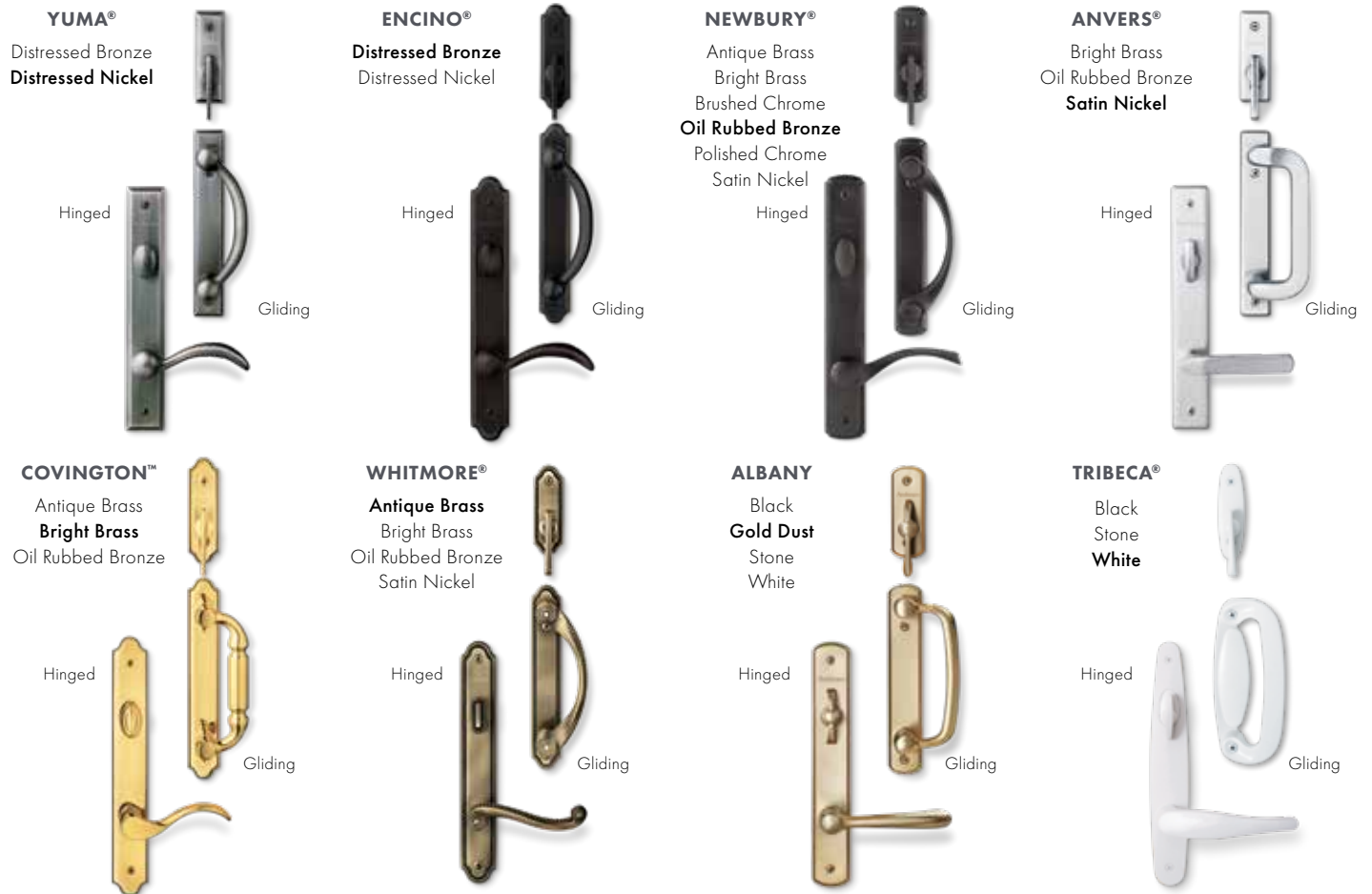
Bold name denotes finish shown.

Distressed bronze and oil rubbed bronze are "living" finishes that will change with time and use.

Printing limitations prevent exact finish replication. See your Andersen supplier for actual finish samples.

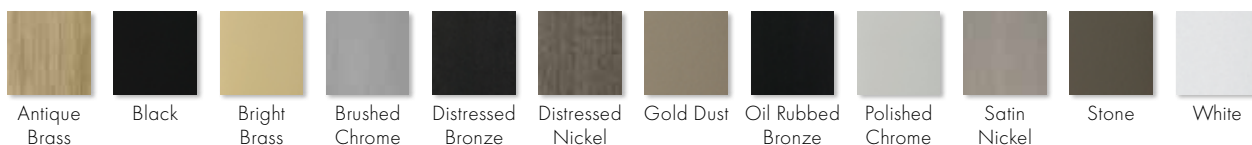
PATIO DOOR HARDWARE

400 Series patio door hardware* is available in a variety of designs to match virtually any style. Additional hardware options such as exterior keyed locks and matching hinge finishes are also available.



Bold name denotes finish shown.

HARDWARE FINISHES



FSB® HARDWARE

Durable FSB hinged door hardware features clean lines and a sleek finish for a thoroughly modern look.



*Hardware sold separately.
**FSB style 1102 is not available in black anodized aluminum.
Distressed bronze and oil rubbed bronze are "living" finishes that will change with time and use.
Bright brass and satin nickel finishes on patio door hardware feature a 10-year limited warranty.
Matching hinges available in most finishes for inswing patio doors.
Printing limitations prevent exact finish replication.
See your Andersen supplier for actual finish samples.
"FSB" is a registered trademark of Franz Schneider Brakel GmbH & Co.

COMPARISON CHART

Use the quick reference chart below to decide which Andersen® 400 Series products best fit your project needs.

| | | WINDOWS | | | | | | | | PATIO DOORS | |
|---|--------------|--|-------------------------------------|--|------------------------------------|--|--------------|------------|------------|------------------------|------------------------------|
| FEATURES | | Woodwright® Double-Hung Full-Frame | Woodwright Double-Hung Insert | Tilt-Wash Double-Hung Full-Frame | Tilt-Wash Double-Hung Insert | Narroline® Conversion Kit | Casement | Awning | Gliding | Frenchwood® Gliding | Frenchwood Hinged Inswing |
| Low-Maintenance Exteriors | | | | | | | | | | | |
| | White | ● | ● | ● | ● | ● | ● | ● | ● | ● | ● |
| | Canvas | ● | ● | ● | ● | | ● | ● | ● | | |
| | Sandtone | ● | ● | ● | ● | ● | ● | ● | ● | ● | ● |
| | Terratone | ● | ● | ● | ● | ● | ● | ● | ● | ● | ● |
| | Forest Green | ● | ● | ● | ● | | ● | ● | ● | ● | ● |
| | Dark Bronze | ● | ● | ● | ● | | ● | ● | ● | | |
| | Black | ● | ● | ● | ● | | ● | ● | ● | | |
| Interiors | | | | | | | | | | | |
| | Maple | ● | ● | | | | | | | ● | ● |
| | Oak | ● | ● | | | | | | | ● | ● |
| | Pine | ● | ● | ● | ● | ● | ● | ● | ● | ● | ● |
| | White | ● | ● | ● | ● | ● | ● | ● | ● | ● | ● |
| | Sandtone | | | | | | | | ● | | |
| | Dark Bronze | | | ● | ● | | ● | ● | ● | | |
| | Black | | | ● | ● | | ● | ● | ● | | |
| Easy Cleaning | | | | | | | | | | | |
| Tilt-to-Clean Sash | | ● | ● | ● | ● | ● | | | | | |
| Grilles & Blinds | | | | | | | | | | | |
| Full Divided Light | | ● | ● | ● | ● | ● | ● | ● | ● | ● | ● |
| Simulated Divided Light | | ● | ● | ● | ● | ● | ● | ● | ● | ● | ● |
| Finelight™ Grilles-Between-the-Glass | | ● | ● | ● | ● | ● | ● | ● | ● | ● | ● |
| Removable Interior Grilles | | ● | ● | ● | ● | ● | ● | ● | ● | ● | ● |
| Blinds-Between-the-Glass | | | | | | | | | | ● | ● |
| High-Performance Glass Additional glass options are available. See page 8 for details. For patio doors, all glass options are tempered. | | | | | | | | | | | |
| Low-E4® | | ● | ● | ● | ● | ● | ● | ● | ● | ● | ● |
| Low-E4 Sun | | ● | ● | ● | ● | ● | ● | ● | ● | ● | ● |
| Low-E4 SmartSun™ | | ● | ● | ● | ● | ● | ● | ● | ● | ● | ● |
| Clear Dual-Pane | | | | | | | ● | ● | | | |
| HeatLock® Coating | | ● | ● | ● | ● | ● | ● | ● | ● | ● | ● |
| Performance Option | | | | | | | | | | | |
| Stormwatch® Protection | | PG Upgrade | | ● | | | ● | ● | | | |
| Smart Home Options | | | | | | | | | | | |
| VeriLock® Security Sensors | | | | ● | ● | ● | ● | ● | | ● | ● |
| Wireless Open/Closed Sensors | | ● | ● | ● | ● | ● | ● | ● | ● | ● | ● |
| Standard Sizes | | | | | | | | | | | |
| Minimum Width | | 1'-9 5⁄8" | 1'-4 1⁄2" | 1'-9 5⁄8" | 1'-9 1⁄4" | Fits Narroline windows made after 1967 | 1'-5" | 2'-0 1⁄8" | 2'-11 1⁄4" | 4'-11 1⁄4" | 2'-6 1⁄8" |
| Maximum Width | | 3'-9 5⁄8" | 3'-9 5⁄8" | 3'-9 5⁄8" | 3'-8 7⁄8" | | 2'-11 15⁄16" | 5'-11 7⁄8" | 5'-11 1⁄4" | 15'-9" | 8'-11 1⁄8" |
| Minimum Height | | 3'-0 7⁄8" | 2'-3 3⁄4" | 3'-0 7⁄8" | 3'-0 3⁄8" | | 2'-0 1⁄8" | 1'-5" | 1'-10 1⁄4" | 6'-7 1⁄2" | 6'-7 1⁄2" |
| Maximum Height | | 6'-4 7⁄8" | 6'-5" | 7'-8 7⁄8" | 7'-6 5⁄8" | | 5'-11 7⁄8" | 4'-0" | 4'-11 1⁄4" | 7'-11 1⁄2" | 7'-11 1⁄2" |
| Custom Sizes | | ● | ● | ● | ● | | ● | ● | | ● | ● |



THE ENVIRONMENT HAS A BUSINESS PARTNER

Respect for the environment is nothing new at Andersen. For more than a century, it's been part of who we are. Our commitment to recycle and reclaim materials began simply because it was good business. Now it's part of our broader commitment to sustainability and responsible stewardship of all our resources. Andersen is committed to providing you with long-lasting,* energy-efficient windows and doors. Visit andersenwindows.com/sustainability for more information.



Andersen makes windows and doors with options that make them ENERGY STAR® v. 6.0 certified throughout the U.S.



Andersen is a charter member of the **U.S. Green Building Council** and a strong supporter of its LEED® (Leadership in Energy and Environmental Design) National Green Building Standard rating system.



*Visit andersenwindows.com/warranty for details.

All trademarks where denoted are marks of their respective owners.
©2020 Andersen Corporation. All rights reserved. 10/20 Part # 110005