

RESOLUTION NO.

RECOMMENDING TO APPROVE AN AMENDMENT TO THE MAJOR THOROUGHFARE PLAN, A COMPONENT OF THE CITY OF SAN ANTONIO MASTER PLAN BY REALIGNING A PROPOSED SEGMENT OF KELLY PARKWAY, A SUPER ARTERIAL TYPE A REQUIRING 200' – 250' FEET OF RIGHT-OF-WAY, BETWEEN EXISTING US 281 AND APPROXIMATELY 1.2 MILES WEST OF EXISTING US 281.

WHEREAS, the Planning Commission is charged by the City Charter with the responsibility to make, amend, extend, and add to the City of San Antonio Master Plan for the physical growth and development of the City; and

WHEREAS, the City of San Antonio Major Thoroughfare Plan was adopted on September 21, 1978 by City Council as a component of the City of San Antonio Master Plan; and

WHEREAS, the Planning Commission held public hearings on March 24, 2021 allowing all interested citizens to be heard.

NOW, THEREFORE, BE IT RESOLVED BY THE PLANNING COMMISSION OF THE CITY OF SAN ANTONIO:

SECTION 1: The amendment to the Major Thoroughfare Plan, a component of the Master Plan of the City, is herein approved and recommended to City Council for adoption to:

1. Realign a proposed segment of Kelly Parkway, a Super Arterial Type A requiring 200' – 250' feet of right-of-way, between existing US 281 and approximately 1.2 miles west of existing US 281.

The Amendment is more particularly described in **Attachment “A,”** attached hereto and incorporated herein for all purposes.

PASSED AND APPROVED ON THIS 24th DAY OF MARCH 2021.

Approved:

Attest:

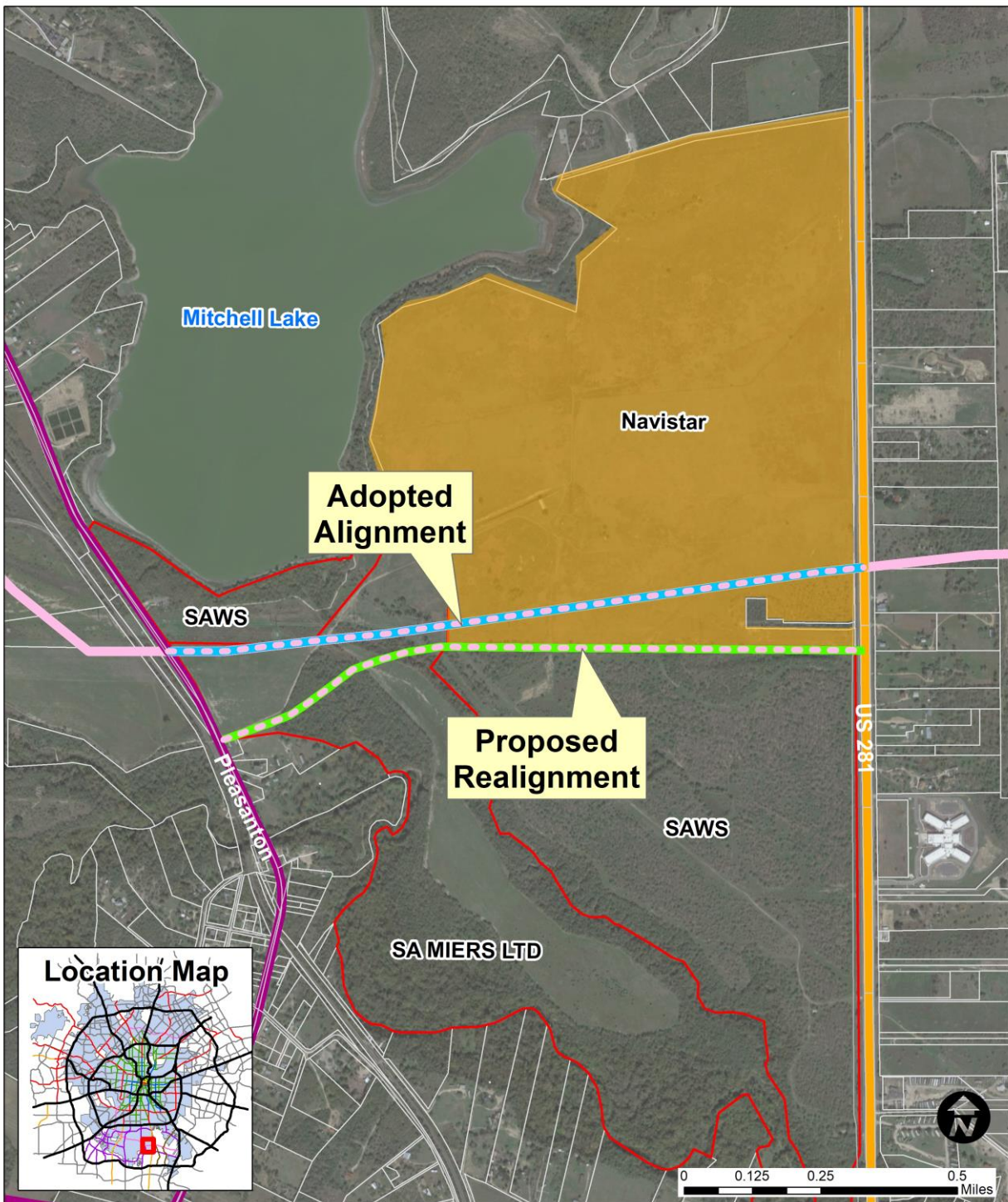
Connie Gonzalez, Chair
San Antonio Planning Commission

Executive Secretary
San Antonio Planning Commission

MAJOR THOROUGHFARE PLAN (MTP)

AMENDMENT TO KELLY PARKWAY

ATTACHMENT A



AMENDMENT

- Proposed Realignment
- Adopted Alignment "2003"
- Preliminary Plat: Black Briar "Navistar"
- 2020 BCAD Parcels

ADOPTED MTP

- Super Arterial Type A
- Super Arterial Type B
- Enhanced Secondary Arterial