



CITY OF SAN ANTONIO  
**EDWARDS AQUIFER**  
PROTECTION PROGRAM

# Conservation Advisory Board

## March 24, 2021

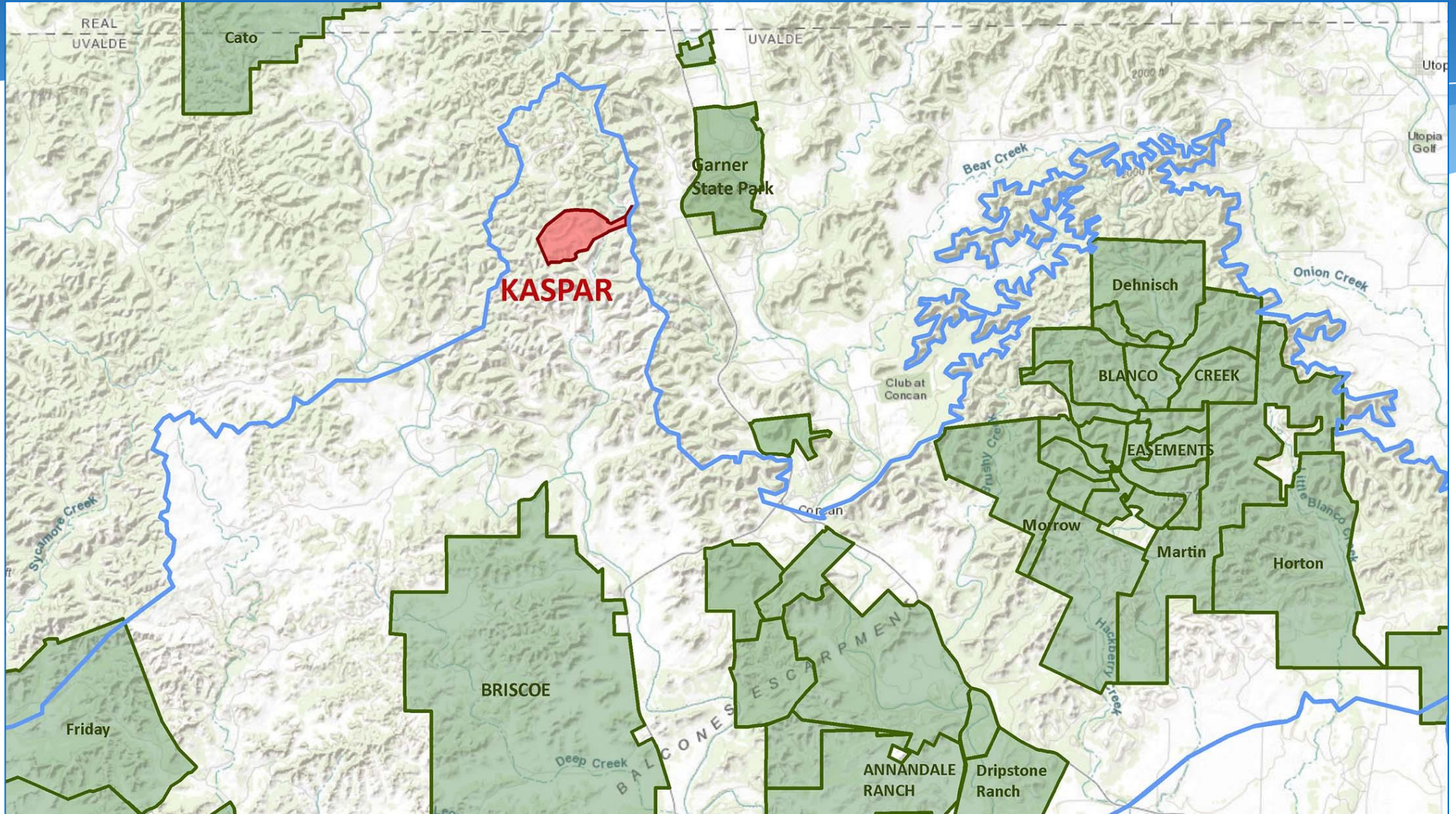
# The Nature Conservancy



High Places Ranch LLC  
Moos Ranch



# High Places Ranch LLC (Kaspar) (562.44 Acres) Uvalde County







## High Places Ranch LLC (Kaspar) (562.44 Acres) Uvalde County

### High Places Ranch LLC (Kaspar)

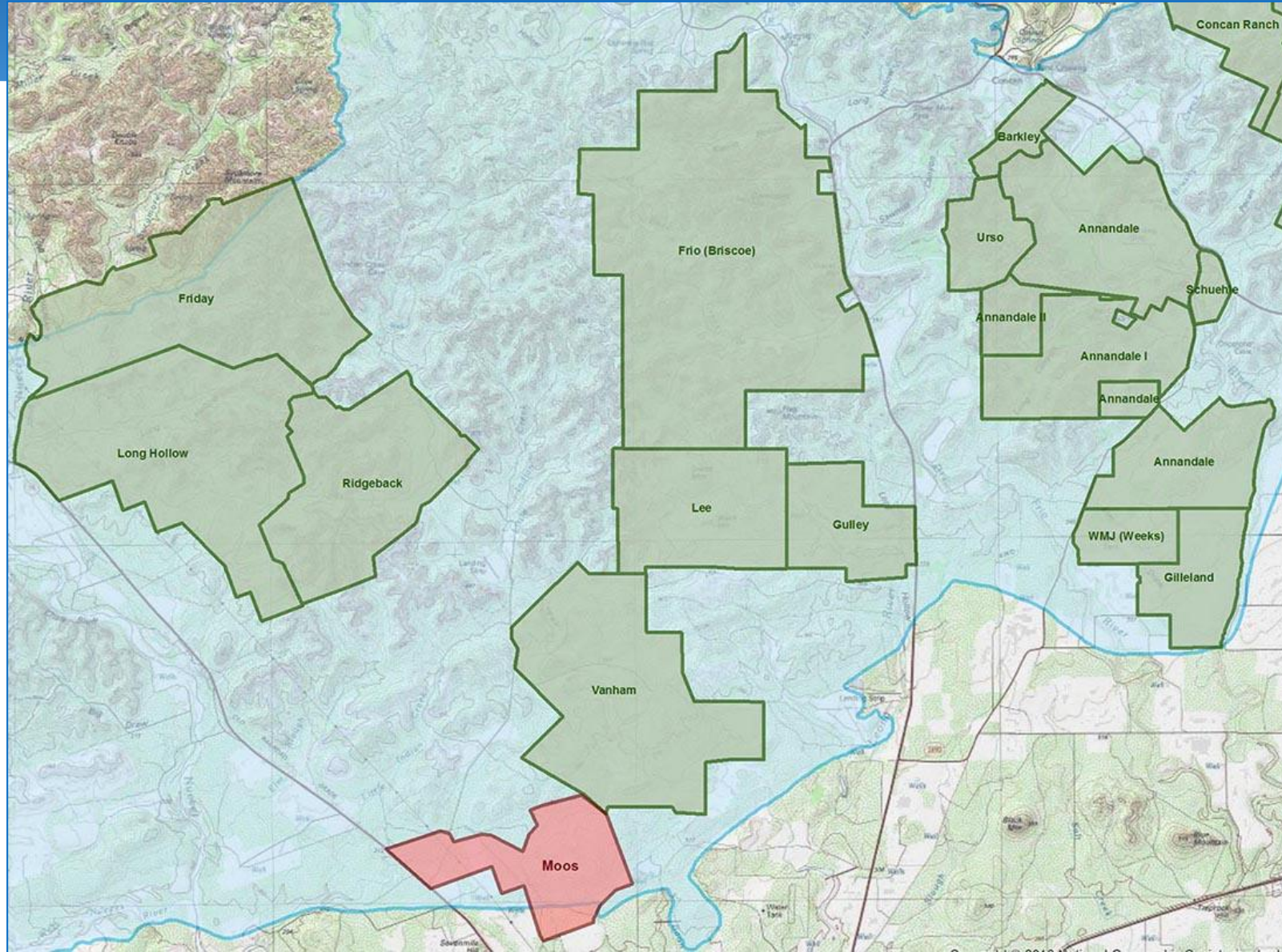
- 562 acres owned by Joey Kaspar – part of the former High Places Ranch
  - Adjacent 3,600 acre ranch currently being evaluated for separate CE
- Top 30% in model
- Dry Frio watershed

➤ **Requesting Stage 1 Consideration**





# Moos Ranch (2,900 Acres) Uvalde County







## Moos Ranch (2,900 Acres) Uvalde County

### Moos Ranch

- North of Uvalde, adjacent to Vanham Ranch (SAWS easement)
  - Top 50% in SET model
  - Previously considered by CAB; EAA ranked as a high priority for acquisition in 2008 geological evaluation
- **Requesting Stage 1 continuation**

