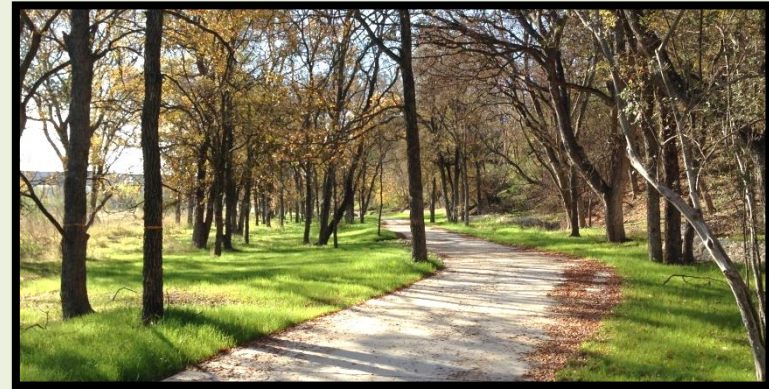




# San Antonio Greenway Trails



**Transportation and Mobility Committee**  
**April 19, 2021**

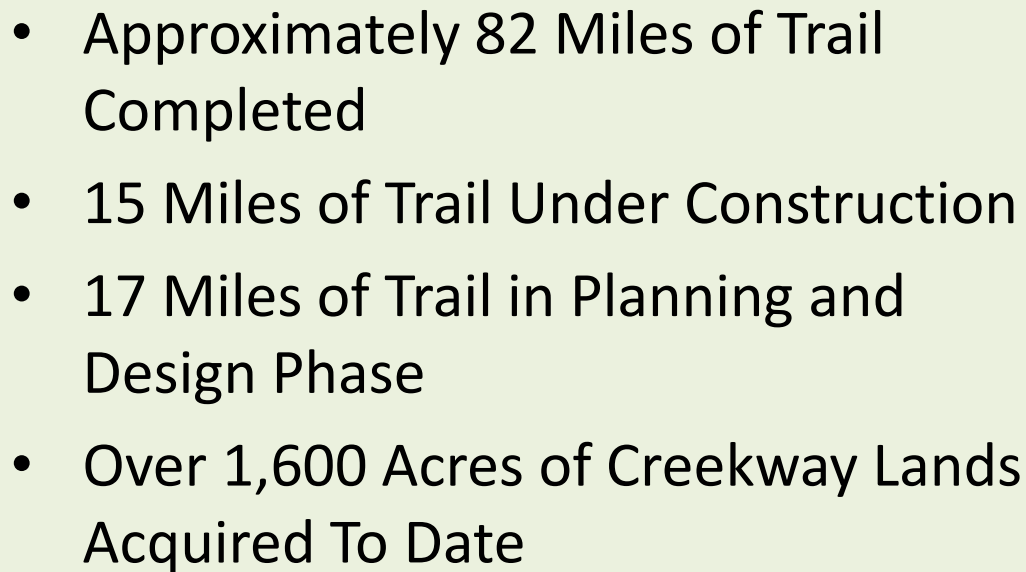


# Proposition 2: Program



- Enhance the Quality of Life for San Antonio Residents and Visitors
  - Outdoor Recreation and Fitness
  - Pedestrian & Bicycle Mobility
  - Park System Connectivity & Access
  - Open Space & Habitat Conservation
- Linear Creekway Parks Advisory Board
  - 11 Council-Appointed Members







# Collaboration



- **COSA Departments: Transportation, Public Works, and Others**
  - **Streets projects** (where trails connect with streets and/or cross under bridges)
  - **Sidewalk and Bike Land System** – Coordination of transit alternatives
  - **Flood Control Projects** and **Stormwater Maintenance**
- **SARA** – Westside Creeks, San Antonio River trails, Rivers and Trails plan
- **TxDOT** – ROW Agreements, project coordination
- **SAWS** – Coordination of projects and easements
- **CPS** – Co-use of easements & trails
- **VIA** – Public Transit system connections
- **COSA Sustainability** – Bike master plan
- **Bexar County** – Flood Control and Park Projects
- Other ongoing coordination with organizations such as **Alamo Area MPO, ActivateSA, and Great Springs Project**





## User Friendliness & Safety

- 10 to 12-foot-wide, accessible concrete trails
- Signage, mile markers, flood warnings
- Connections to neighborhoods and other destinations
- Trailhead locations convenient to residents

## Environmental Sustainability

- Low Impact Development (LID) principals
- Native landscape materials
- Preserve tree canopy and geology
- Alleviate dumping and off-roading
- No lighting within natural creek areas and near residences
- Removal of invasive species





## Existing Major System Connections

- Leon Creek Greenway to Salado Creek Greenway
- Medina River Greenway to San Antonio River Trails
- Westside Creeks to San Antonio River

## Future Major System Connections

- Salado North to Salado South (via Ft. Sam Houston)
- Salado Creek Greenway to San Antonio River
- Leon North to Leon South (around Lackland AFB)
- Leon Creek Greenway to Medina River Greenway



# Major Trail System Connections

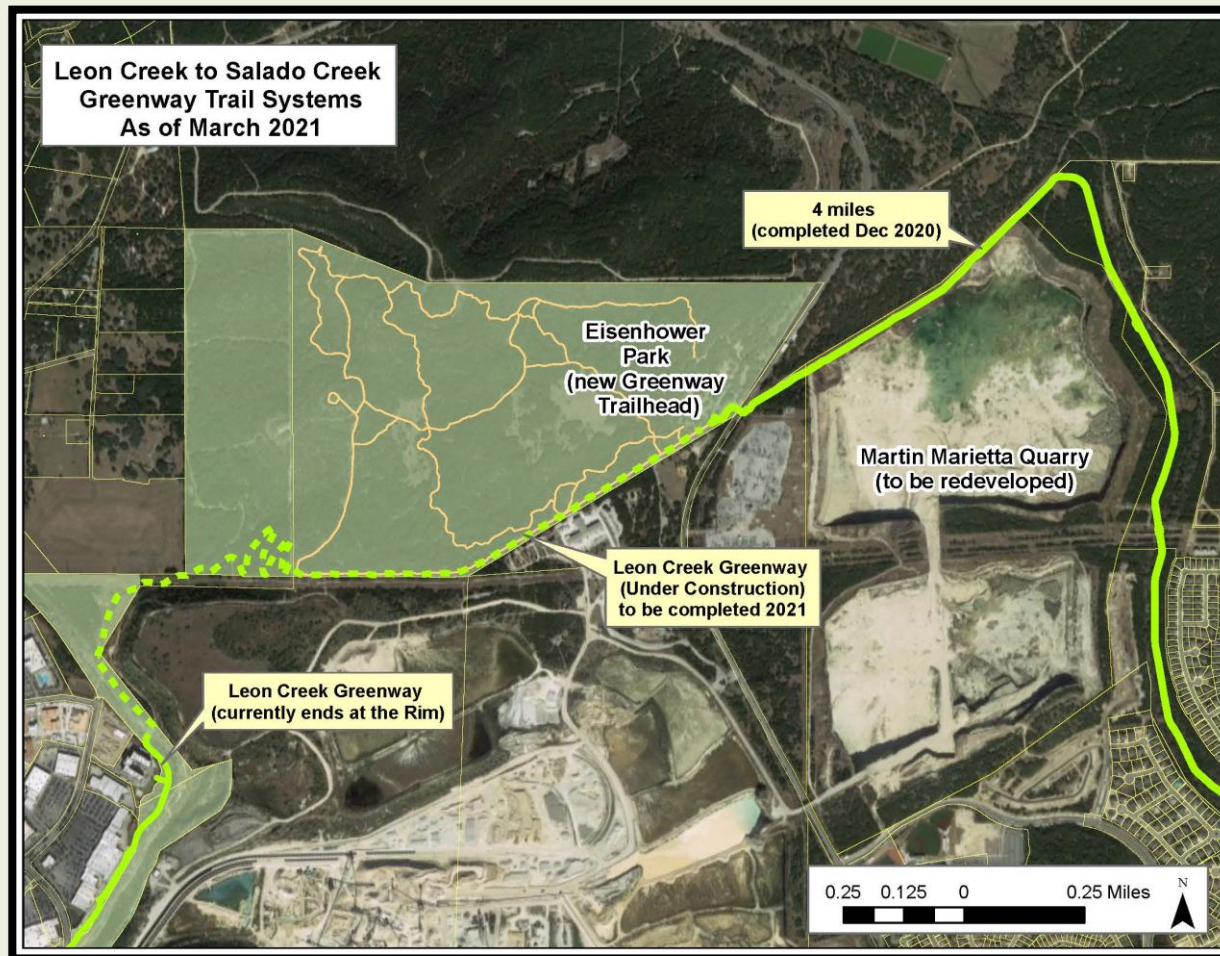


## Leon Creek Greenway to Salado Creek Greenway





# Major Trail System Connections

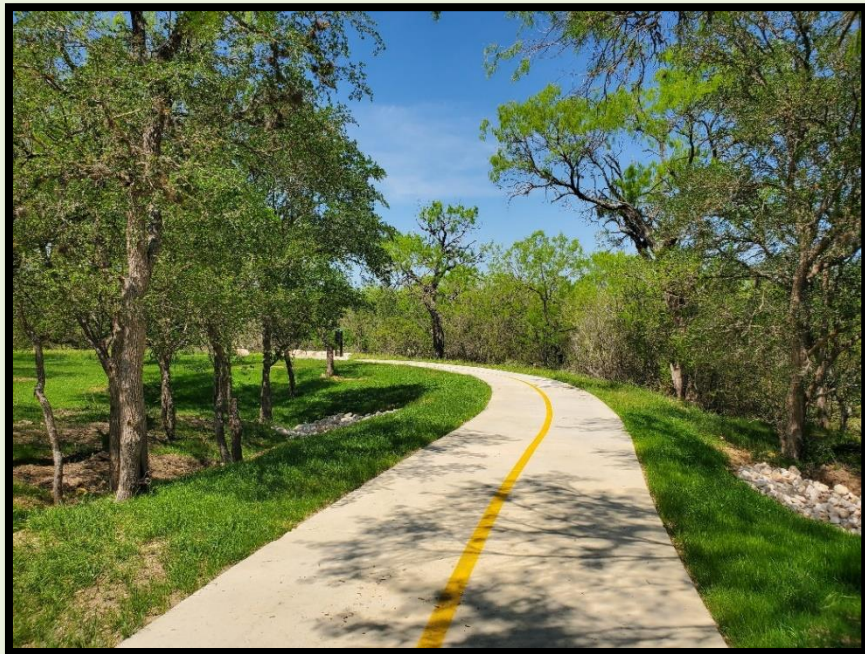




# Major Trail System Connections

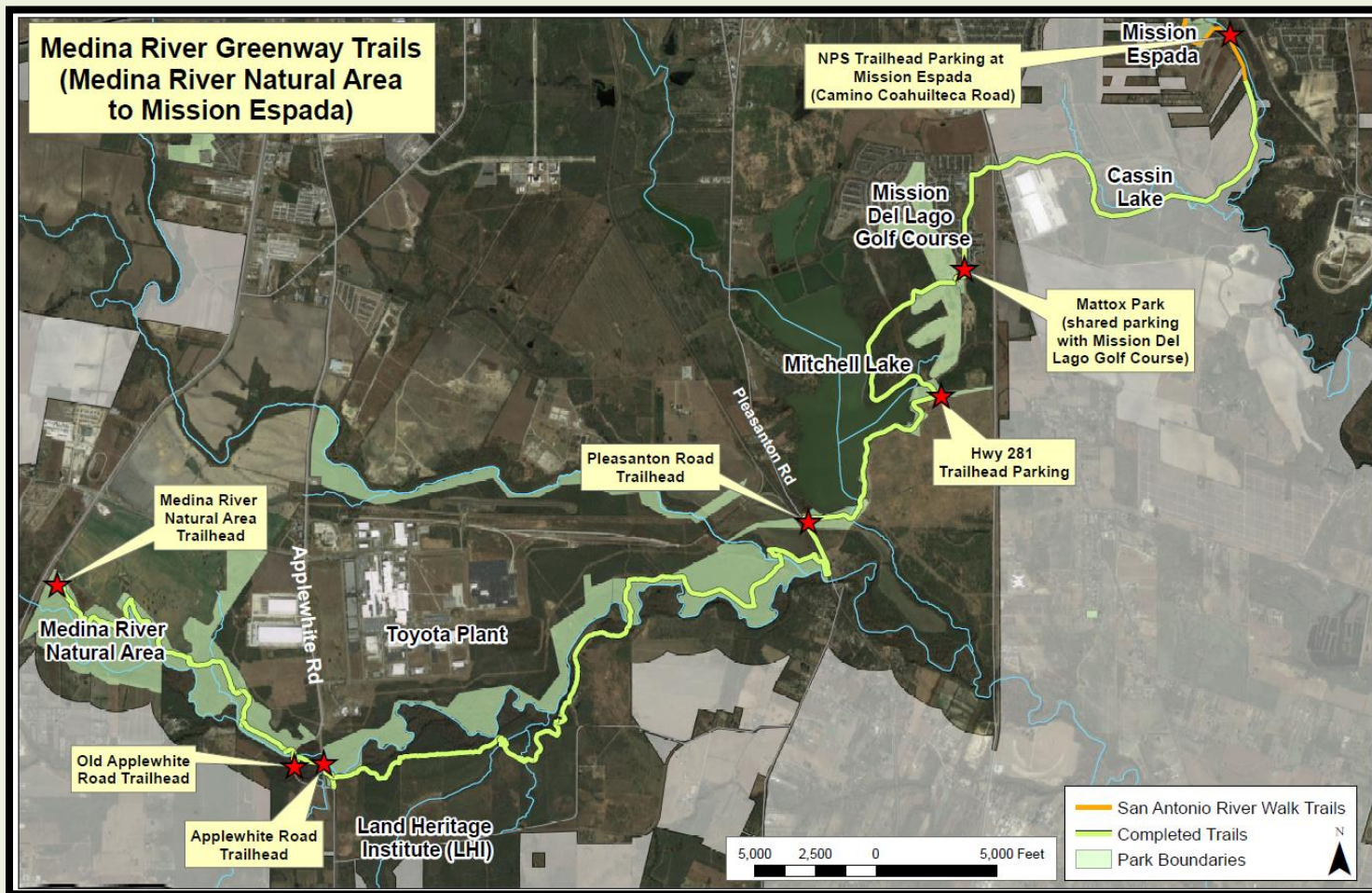


## Medina River Greenway to San Antonio River Trails





# Major Trail System Connections

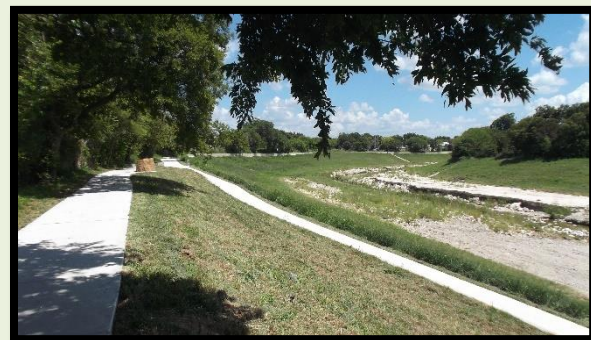
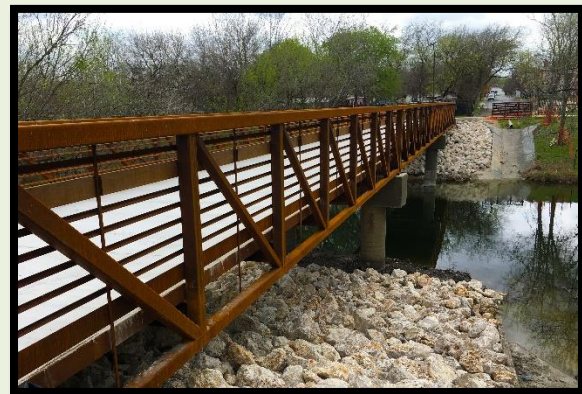
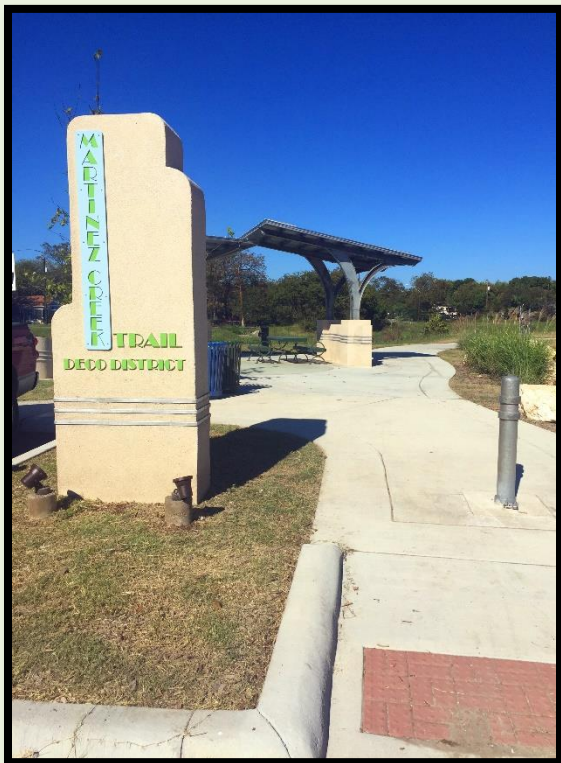




# Major Trail System Connections

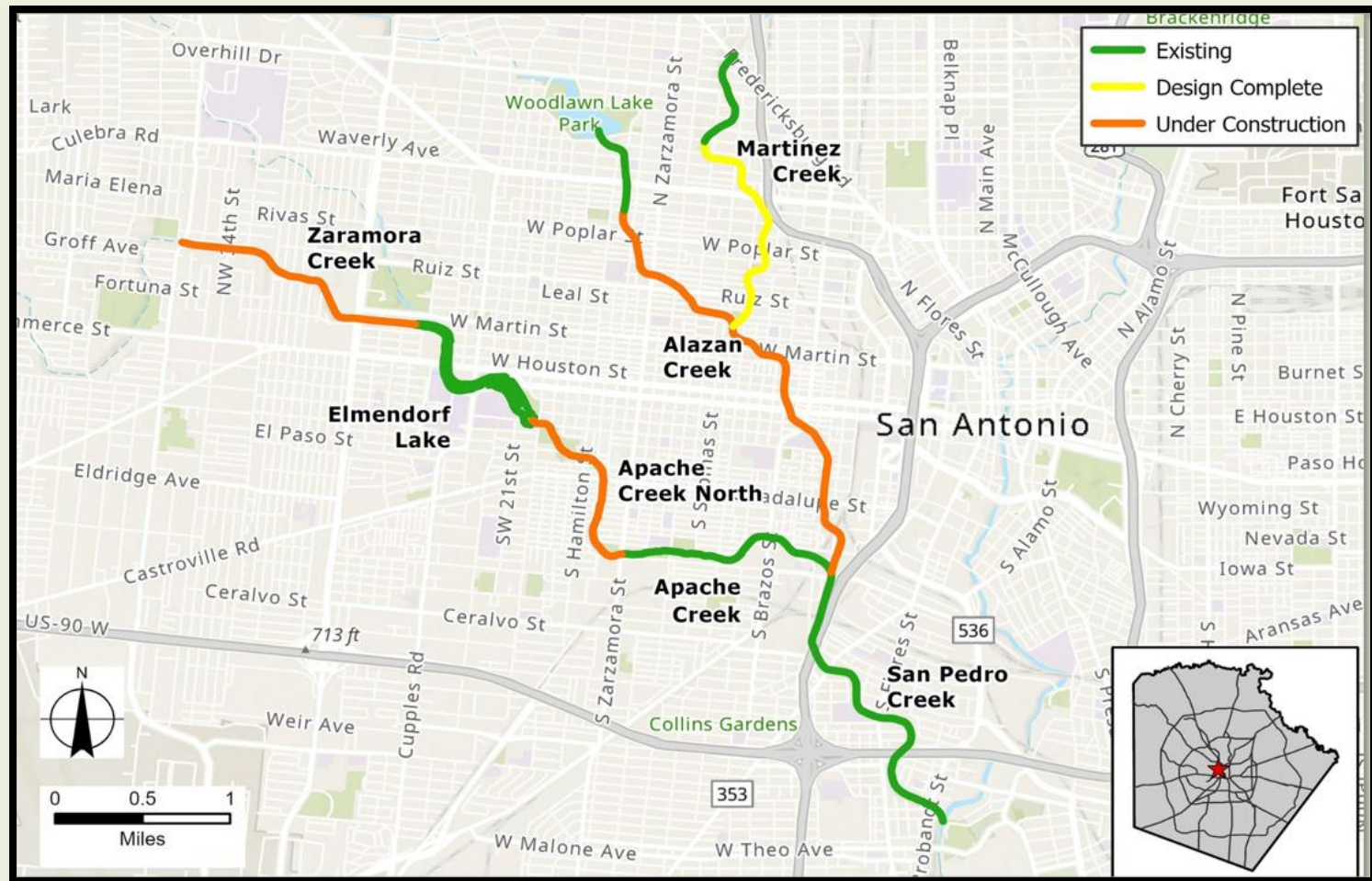


## Westside Creeks Greenway Trails to San Antonio River Trails



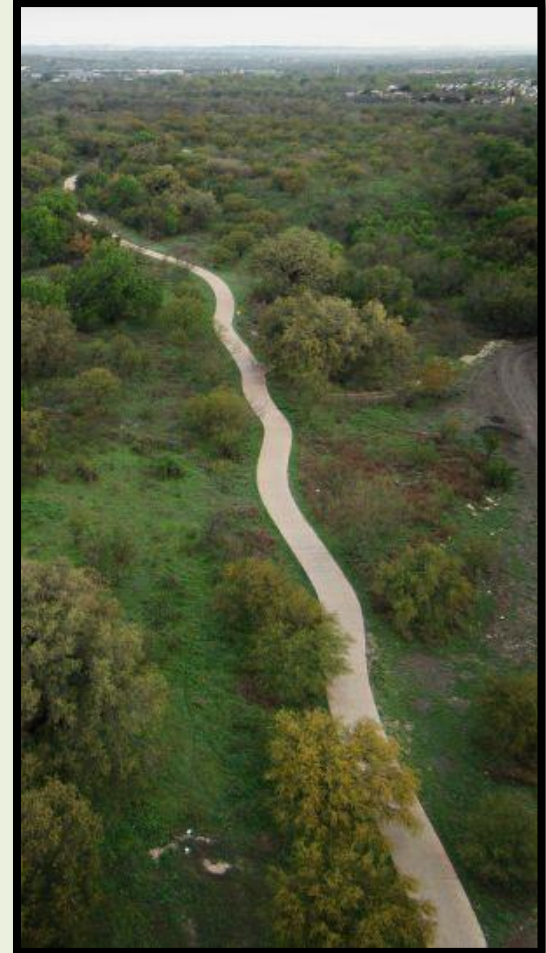


# Westside Creeks Greenway Trails



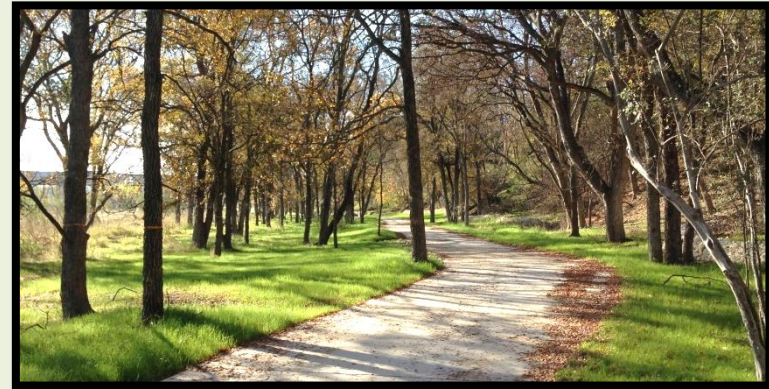


# Howard W. Peak Greenway Trails System





# San Antonio Greenway Trails



**Transportation and Mobility Committee**  
**April 19, 2021**