

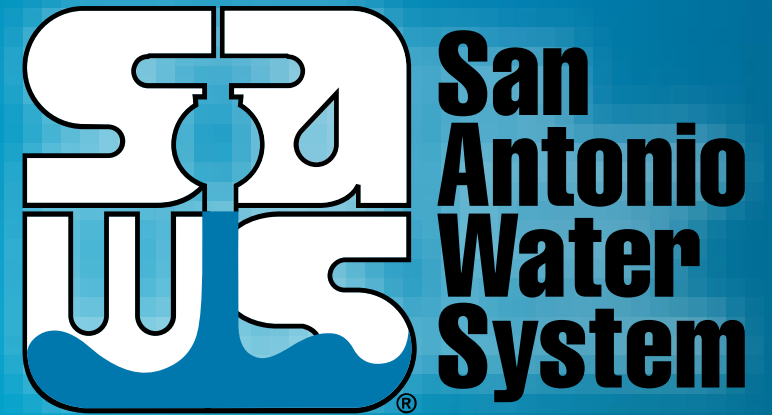
# Specht Tract Oversized Infrastructure

Tracey B. Lehmann, P.E.

Director – Development Engineering

Conservation Advisory Board

March 2021



MAKING SAN ANTONIO  
**WATERFUL**



# Location

## LEGEND

Residential

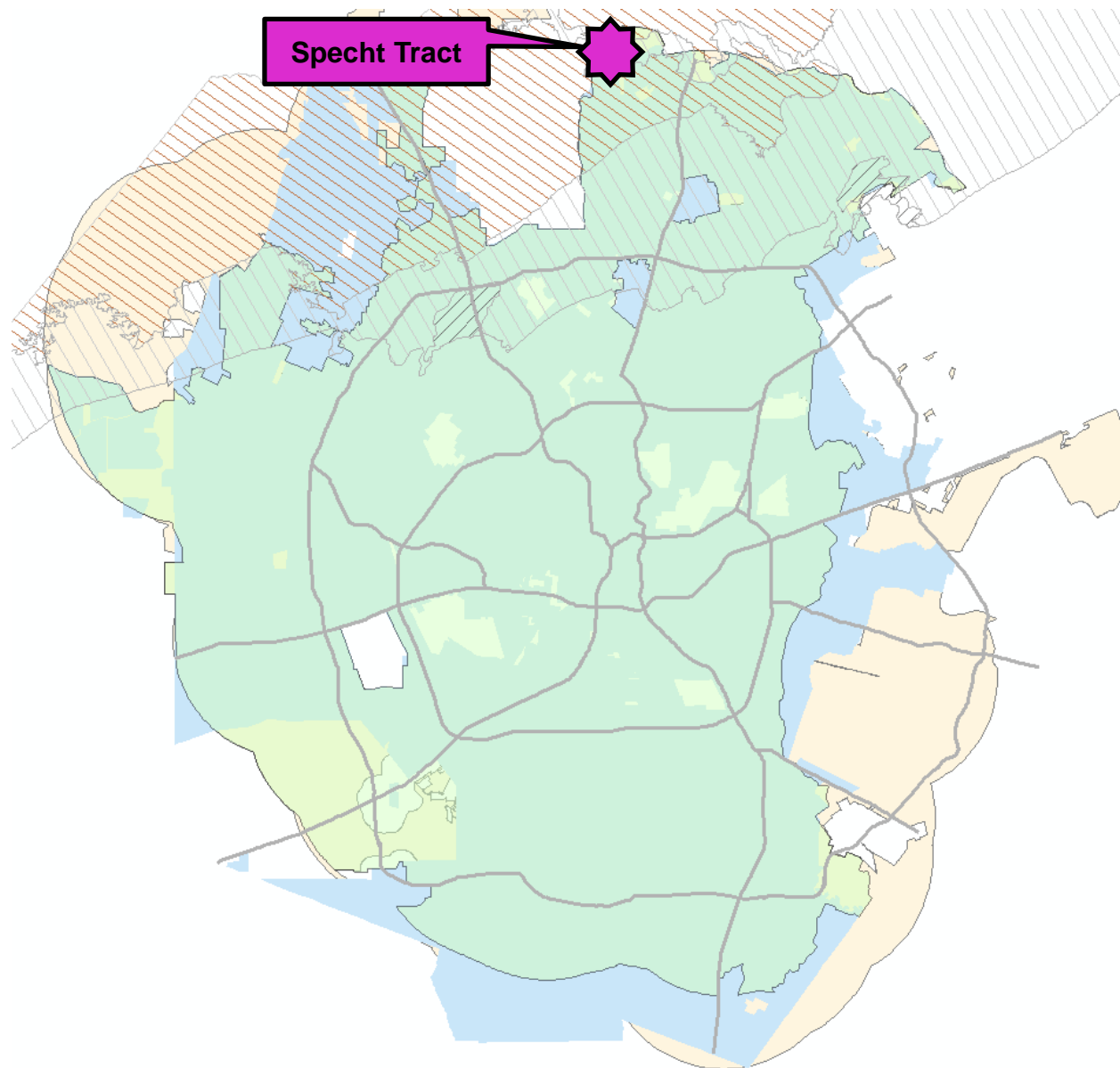
Commercial

Mixed Use

Multi-Family

School

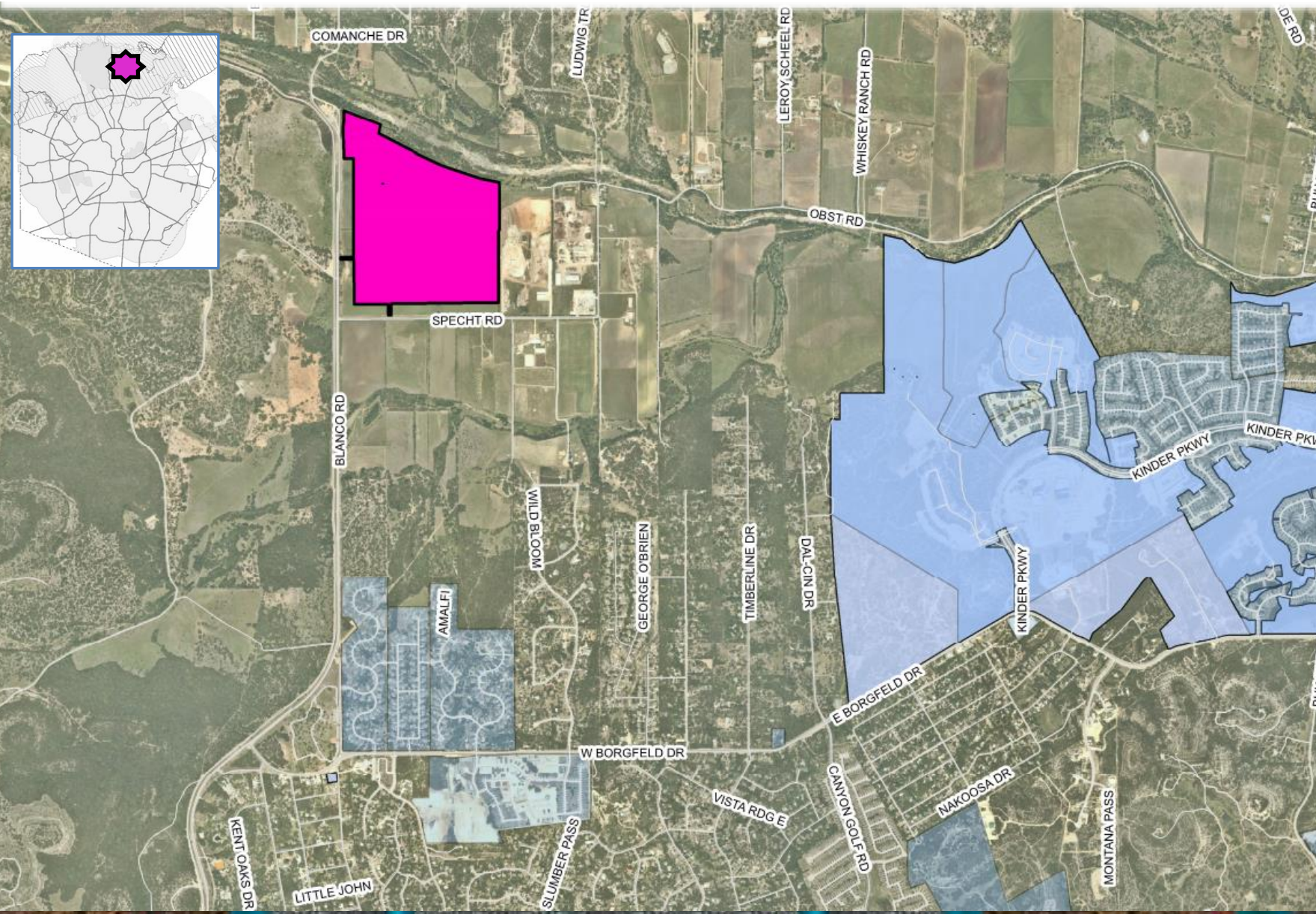
Park



Specht Tract Oversized Infrastructure



# Specht Tract (Mixed-Use)



| Acreage | Water EDUs | Wastewater EDUs |
|---------|------------|-----------------|
| 173     | 420        | 420             |

## Tract Location

- Inside CoSA ETJ
- Inside Water CCN
- Inside Sewer CCN

## Oversizing Requirements

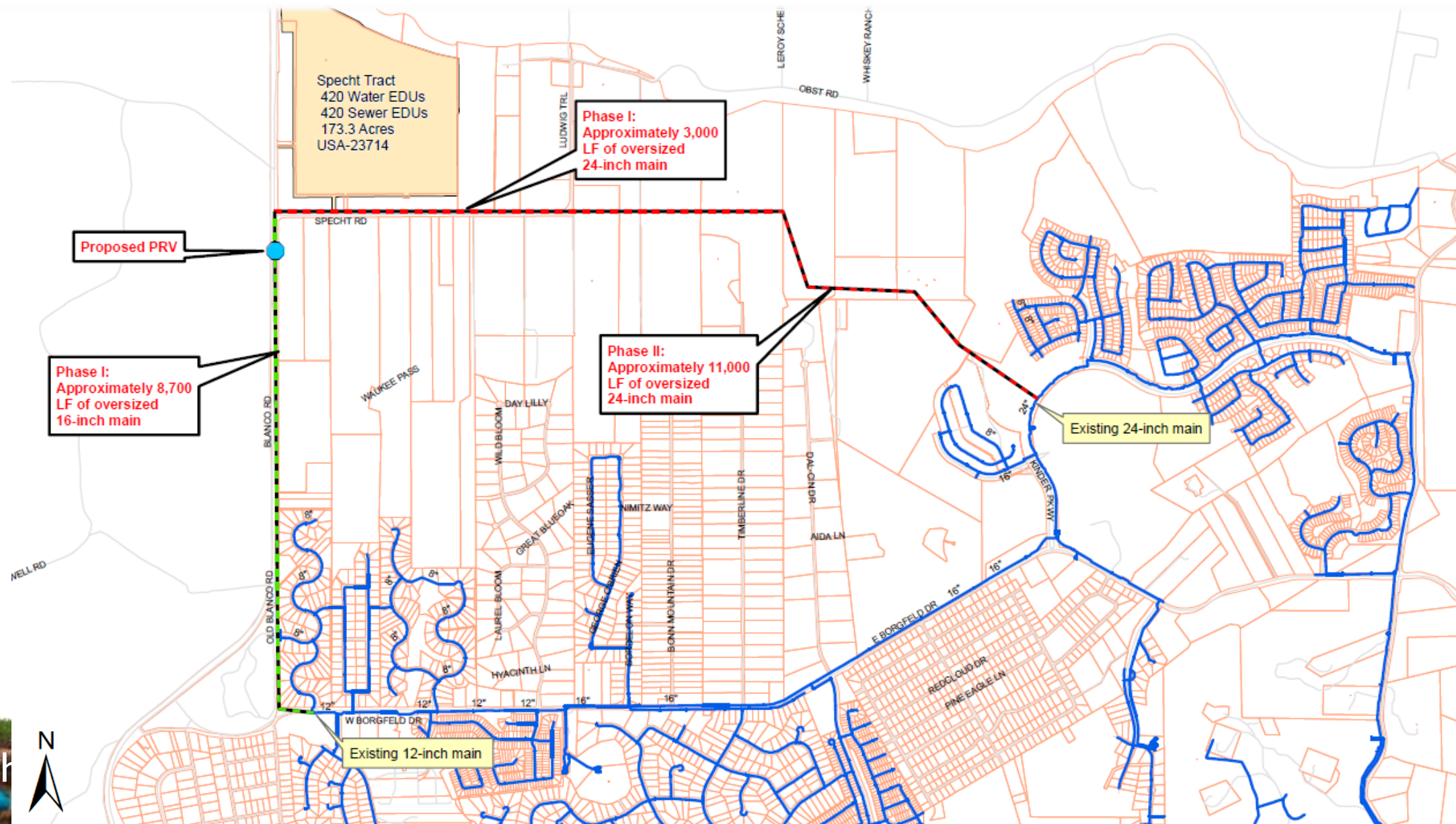
- 16-inch Water
- 24-inch Water
- 15-inch Sewer

## Category

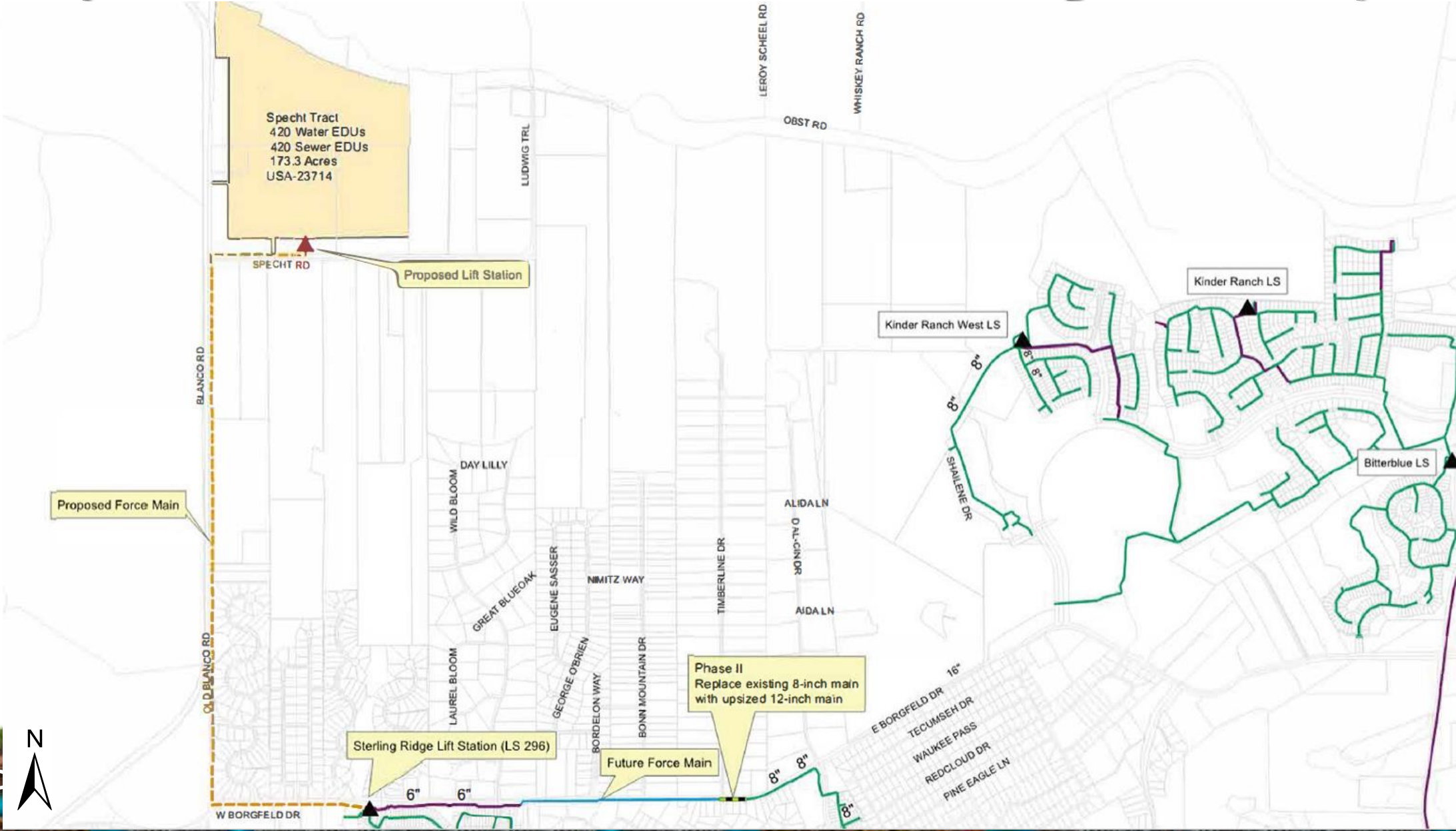
- Within EARZ
- Within 5-mile JBSA (Camp Bullis)



# Proposed Water Infrastructure

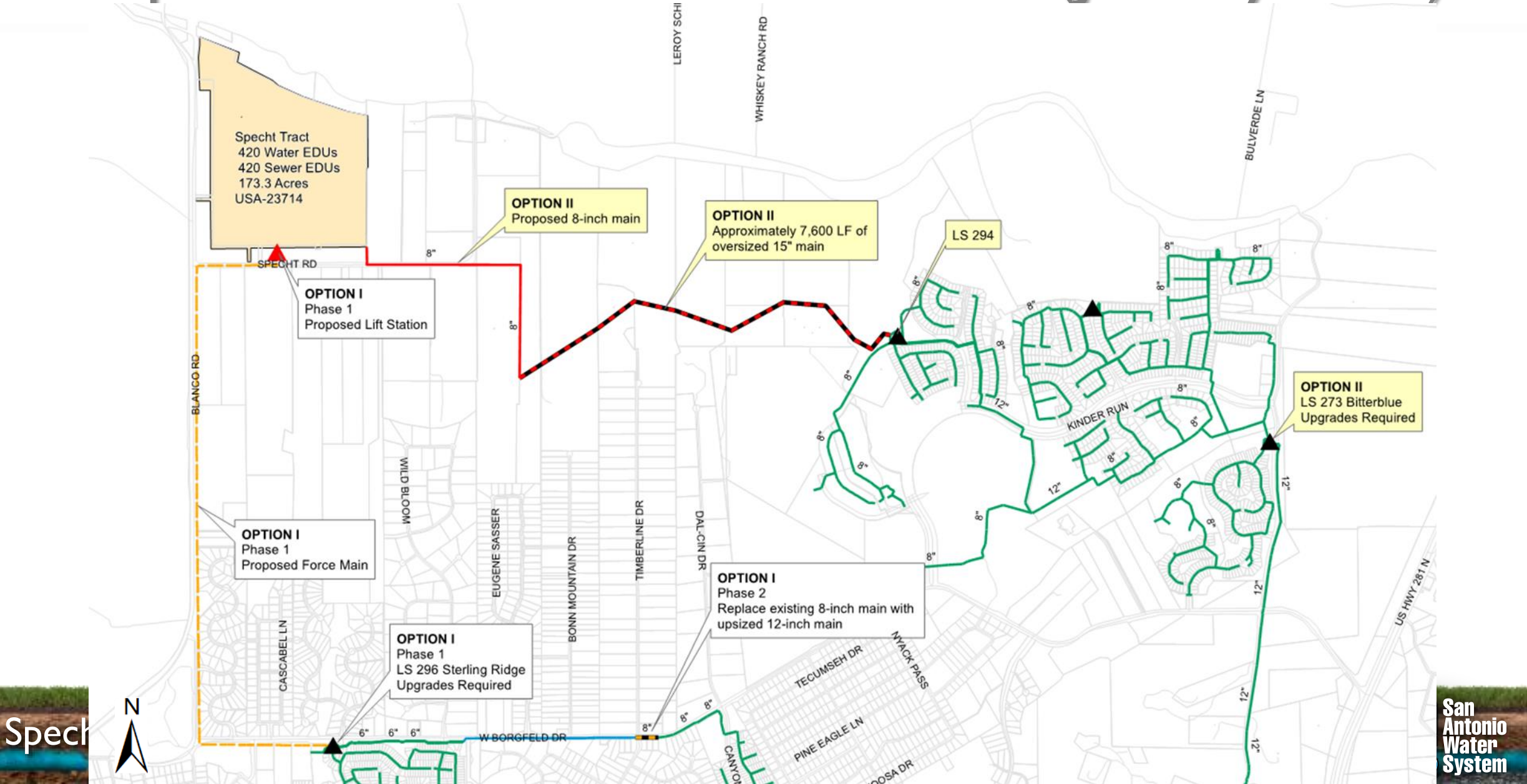


# Proposed Wastewater Infrastructure (June 2020)



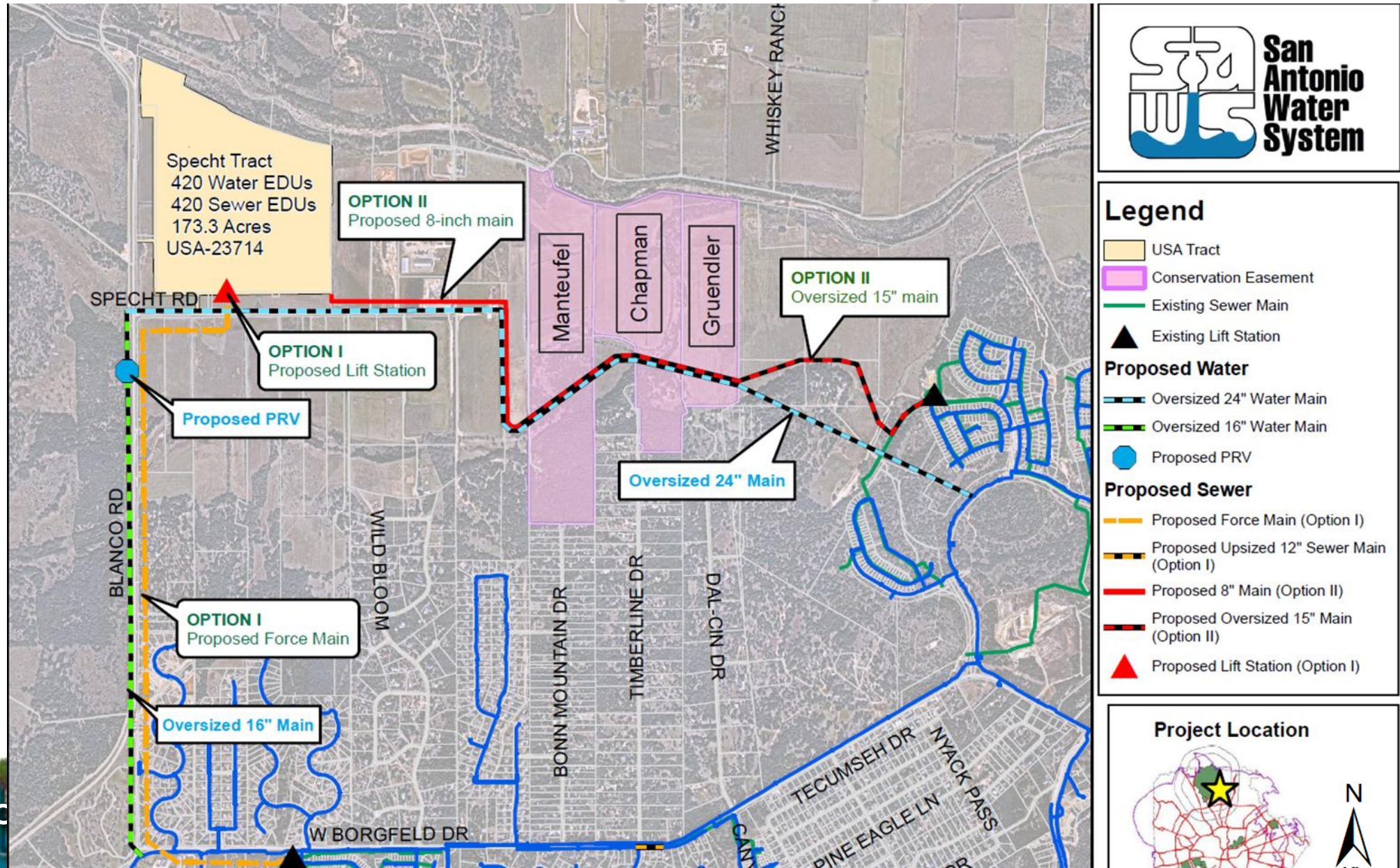


# Proposed Wastewater Infrastructure (January 2021)



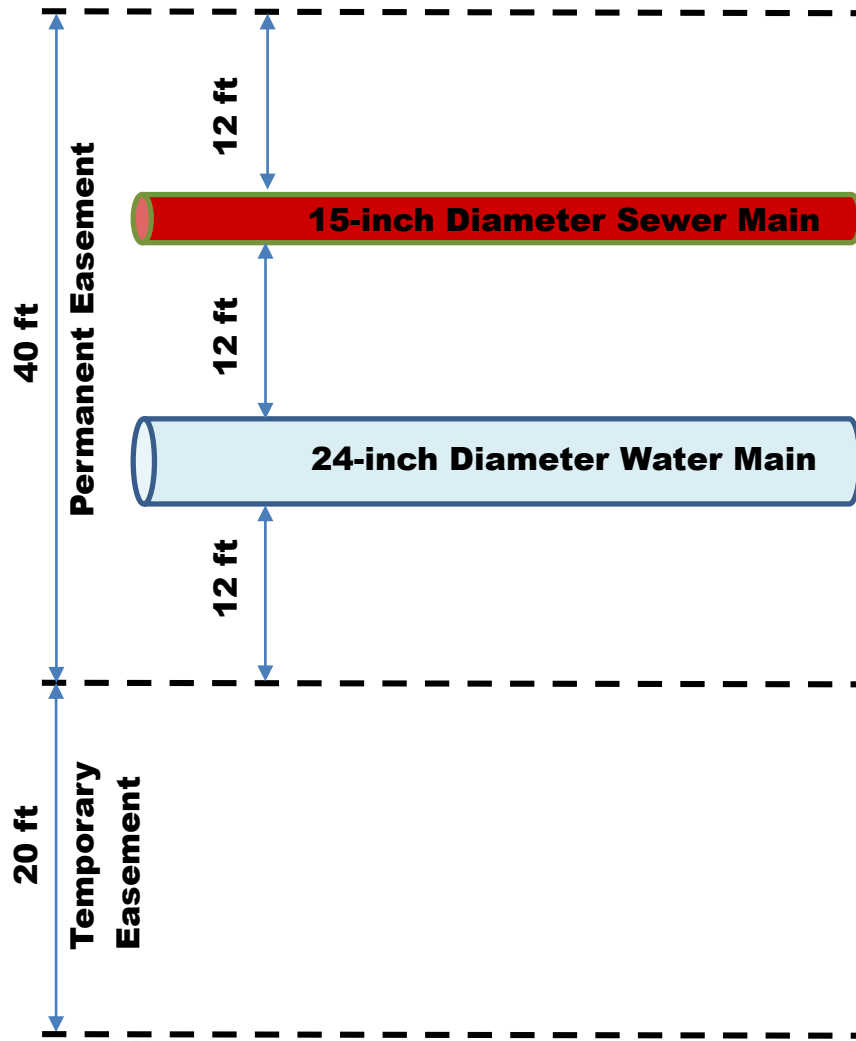


# Proposed Infrastructure (Current)

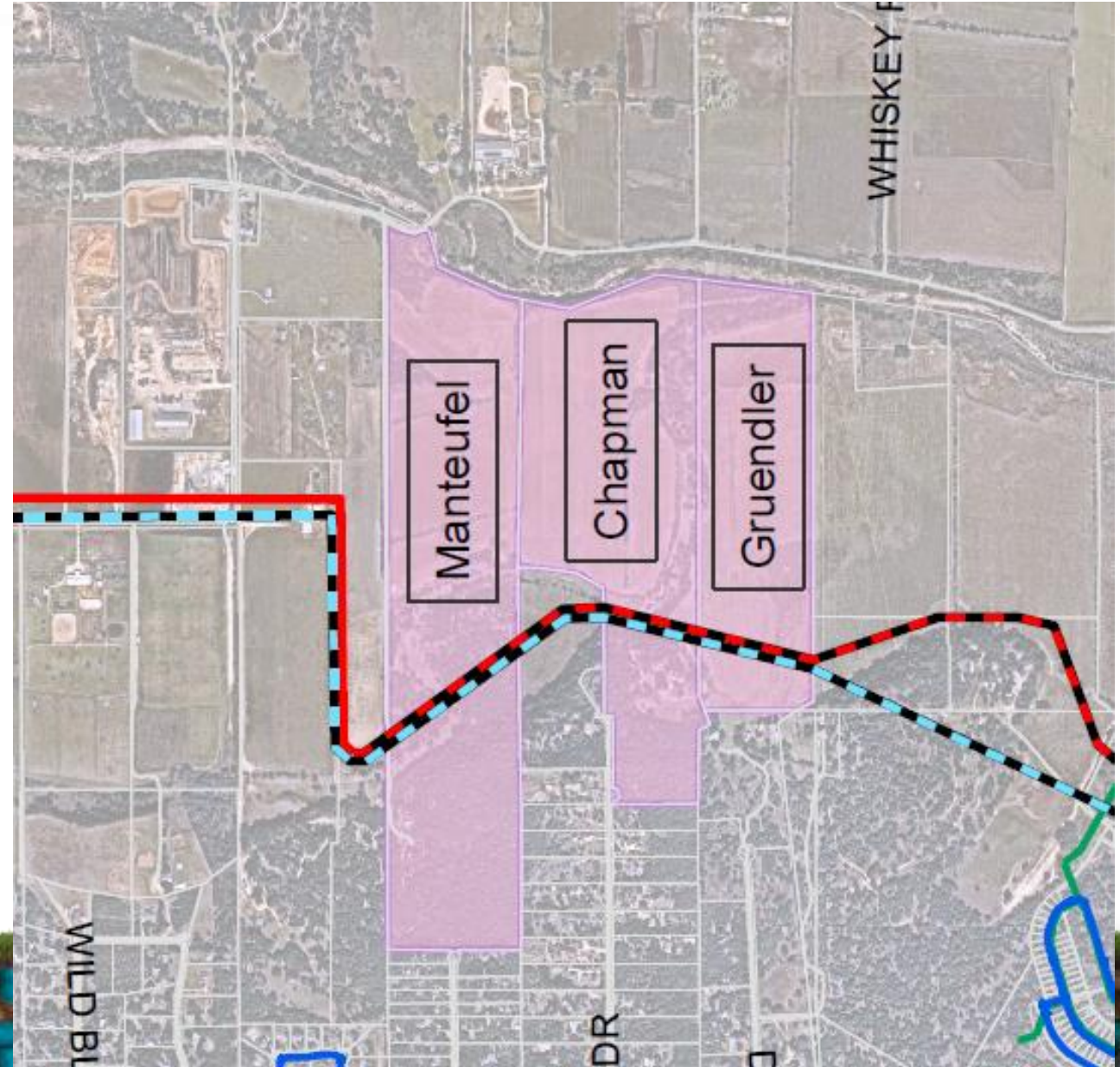




# Proposed Infrastructure (Current)



Specht Tract Oversized Infrastructure





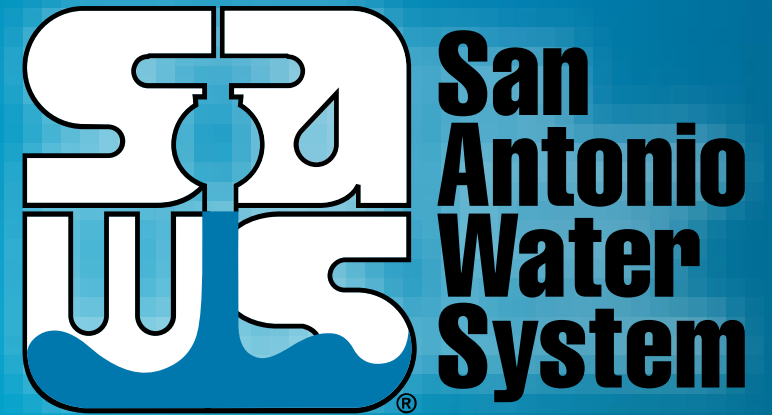
# Specht Tract Oversized Infrastructure

Tracey B. Lehmann, P.E.

Director – Development Engineering

Conservation Advisory Board

March 2021



MAKING SAN ANTONIO  
**WATERFUL**

