



CITY OF SAN ANTONIO  
**EDWARDS AQUIFER**  
PROTECTION PROGRAM

# Conservation Advisory Board

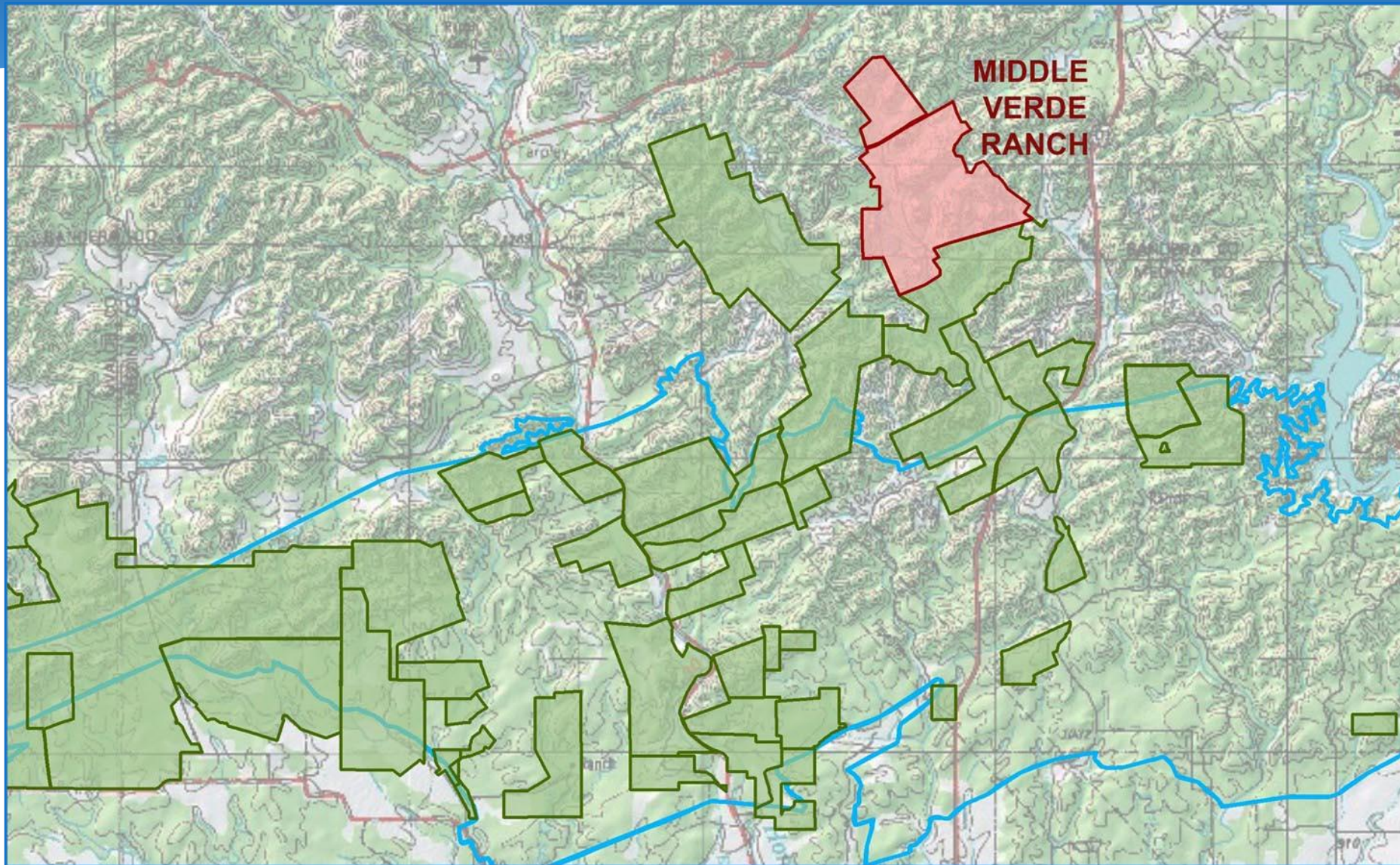
## April 28, 2021

# The Nature Conservancy



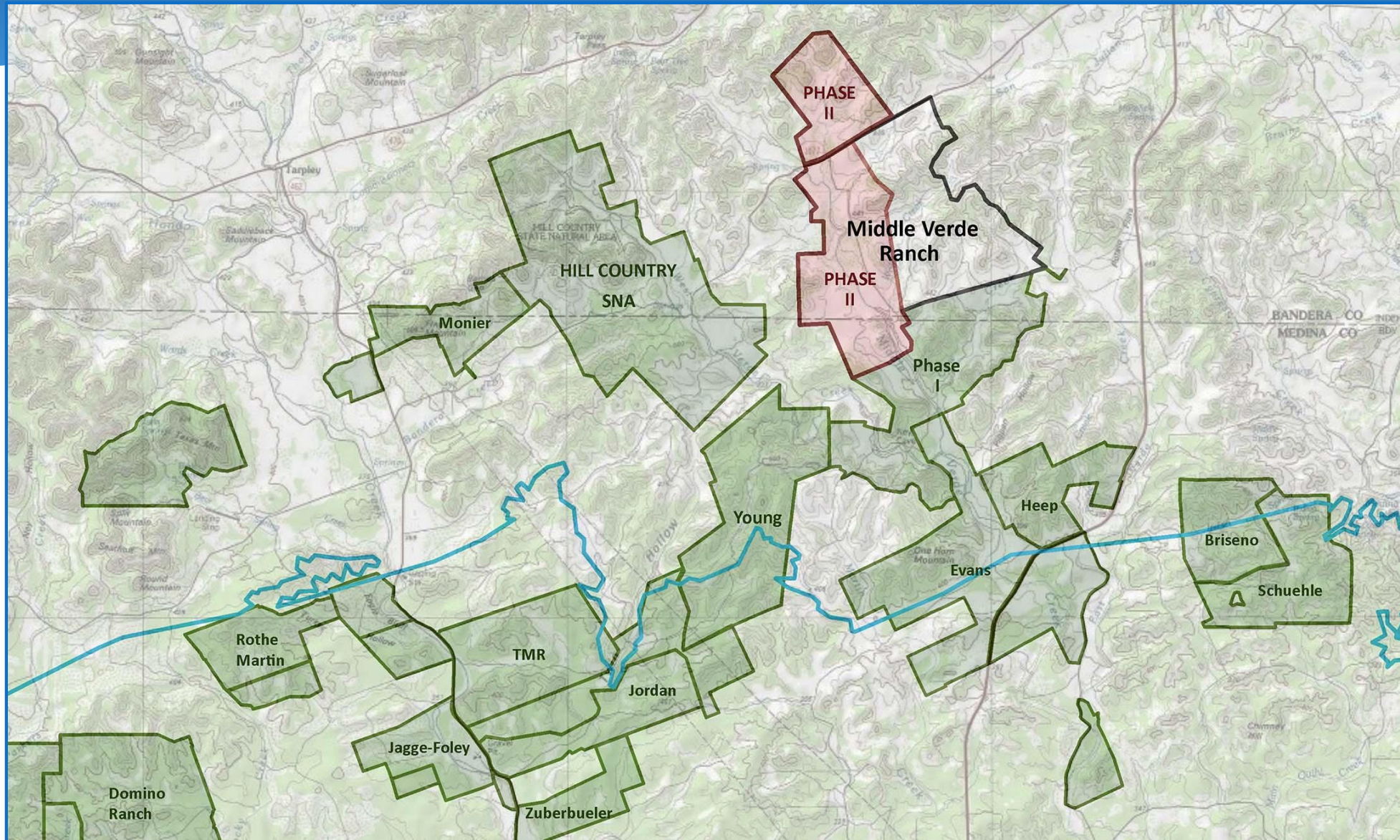
Middle Verde Ranch Addition  
Rothe Martin Phase III

## Middle Verde Ranch Addition (3,450-6,000 Acres) Bandera/Medina Counties





## Middle Verde Ranch Addition (3,450-6,000 Acres) Bandera/Medina Counties





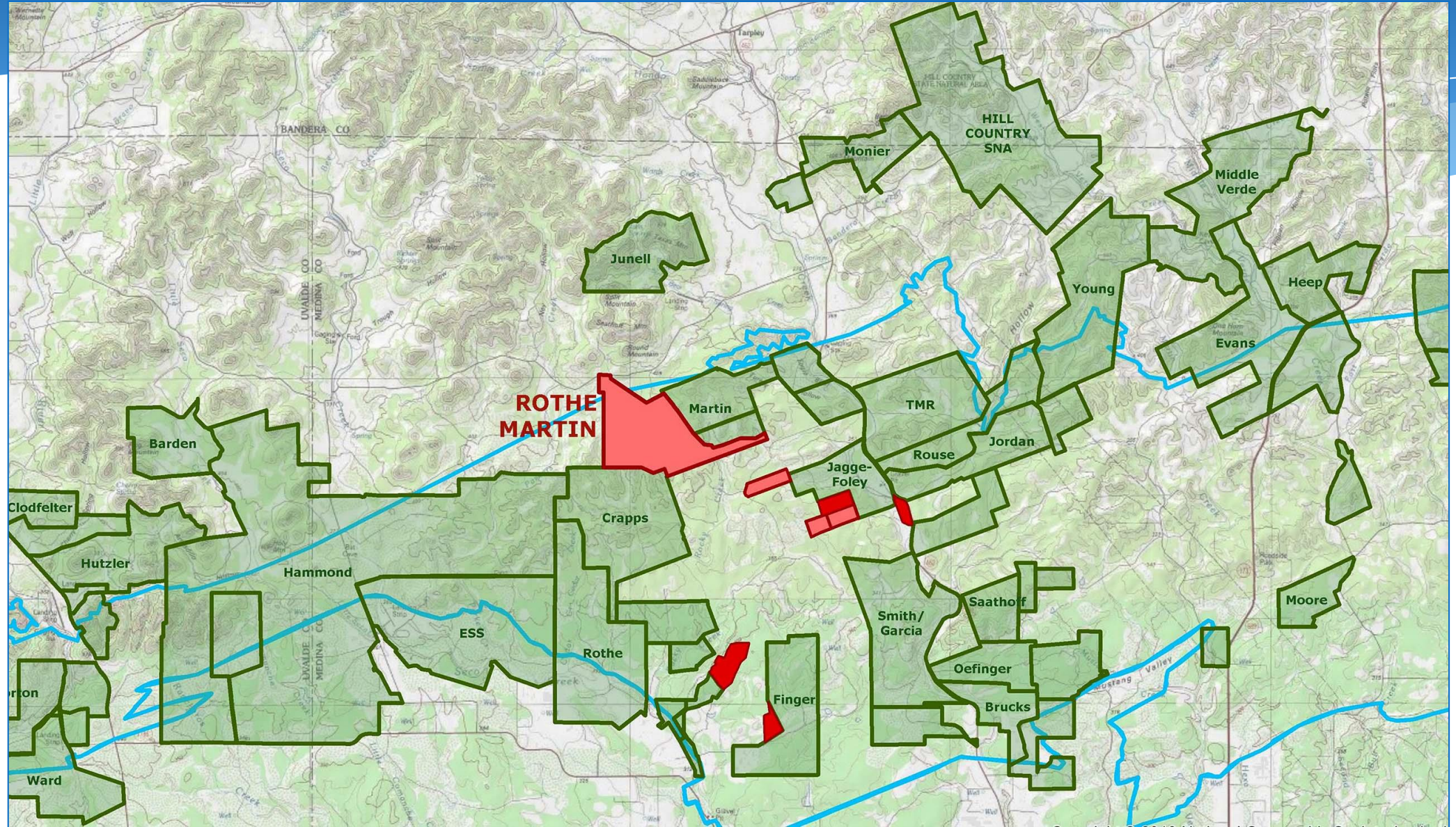
## Middle Verde Ranch Addition (3,450-6,000 Acres) Bandera/Medina Counties

- City acquired easement on southern 1/3 of ranch in 2017
- Family wants to sell an easement on the remainder of the ranch or a 3,450-acre section
- Middle part of ranch ranked in Top 30% in new model; northern portion of ranch unranked
- Appraisal complete; EAA ranked high-to-very high water quantity and very high water quality benefits
- **Requesting Stage 2 consideration**





# Rothe Martin Phase III (1,740 Acres) Medina County





## Rothe Martin Phase III (1,740 Acres) Medina County

- Remainder of ranch with two prior COSA easements
- Connects Domino Ranch, Calvert forming a continuous 20-mile corridor of easement lands
- Mostly in recharge zone; ranked Top 60% in model
- Appraisal complete; EAA ranked high-to-very high water quantity and high water quality benefits
- **Requesting Stage 2 consideration**

