

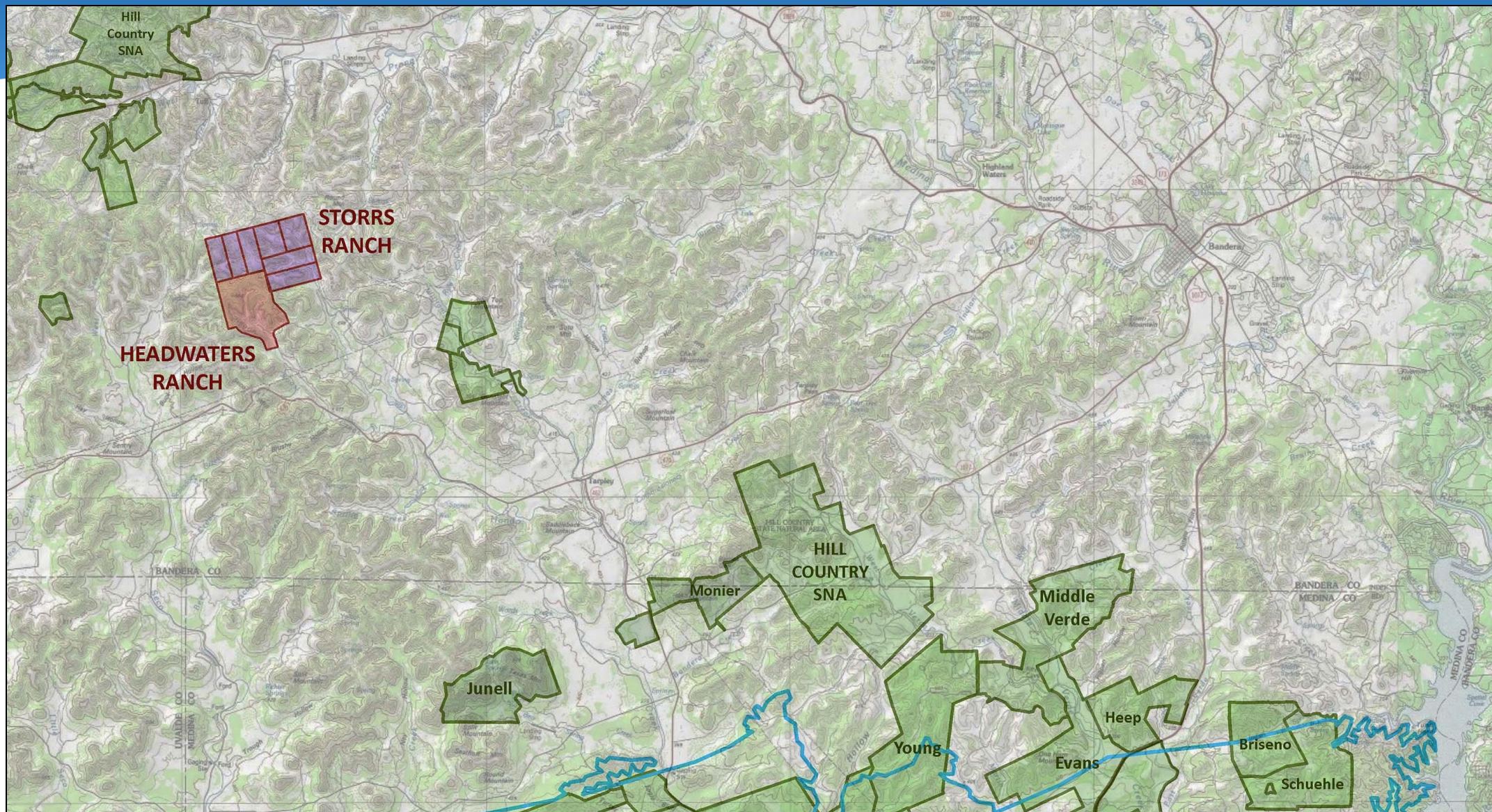
# The Nature Conservancy



Headwaters Ranch  
Mazurek Ranch  
Middle Verde Ranch Phase II  
Storrs Ranches  
Mikeska Ranch/Powell Ranch



# Headwaters Ranch (861.406 Acres) Bandera County





## Headwaters Ranch (861.406 Acres) Bandera County

### Headwaters Ranch

- Near Tarpley in Bandera County
- Adjacent to Storrs family ranches
- Contains headwaters for Hondo Creek and Pigeon Roost Creek
- Located approx. 5 miles north of current Area of Interest
- EAA ranked high water quantity and very high water quality
- Due diligence completed
- Landowner has agreed to bargain sale

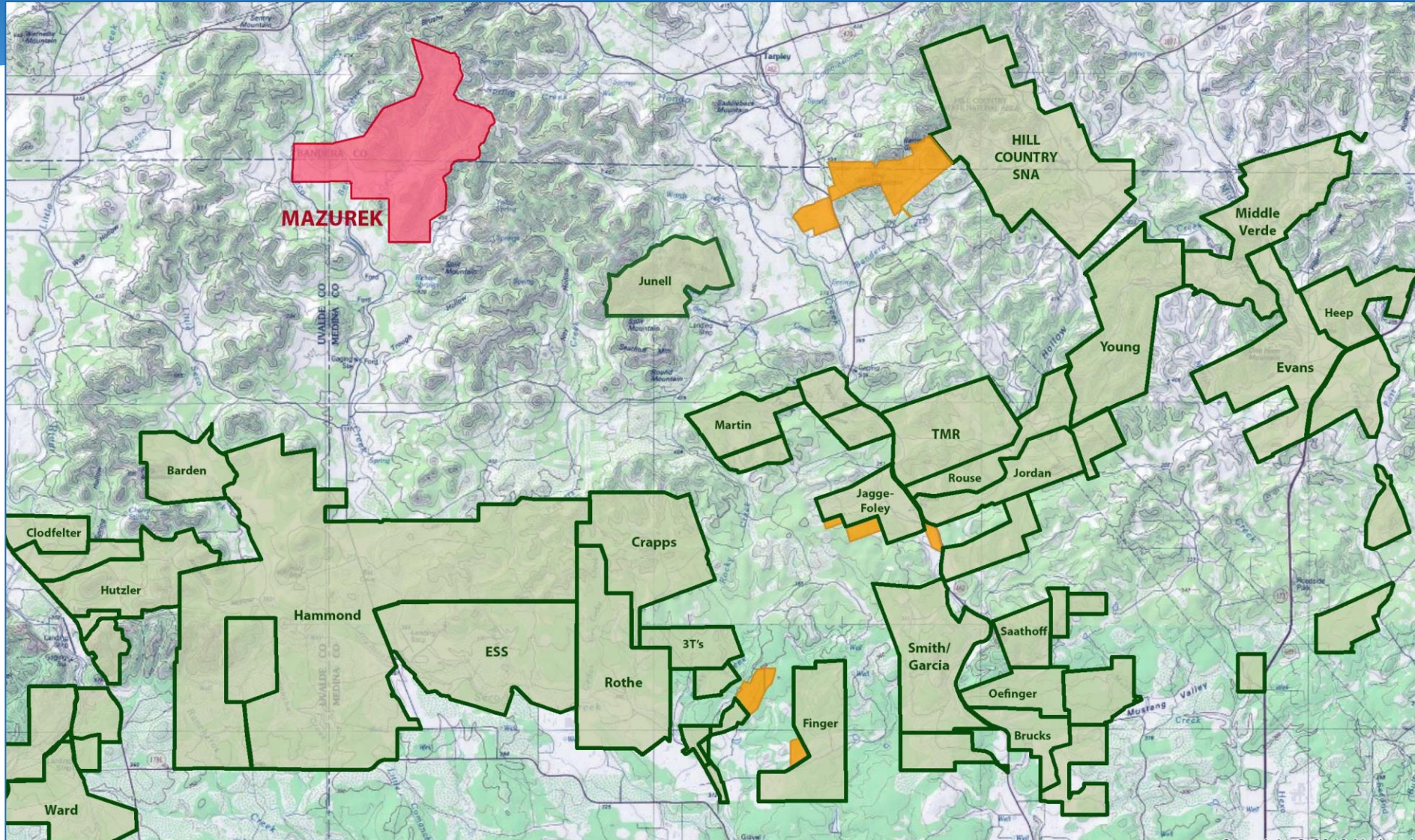
➤ **Requesting final approval**

# Headwaters Ranch (861.406 Acres) Bandera County





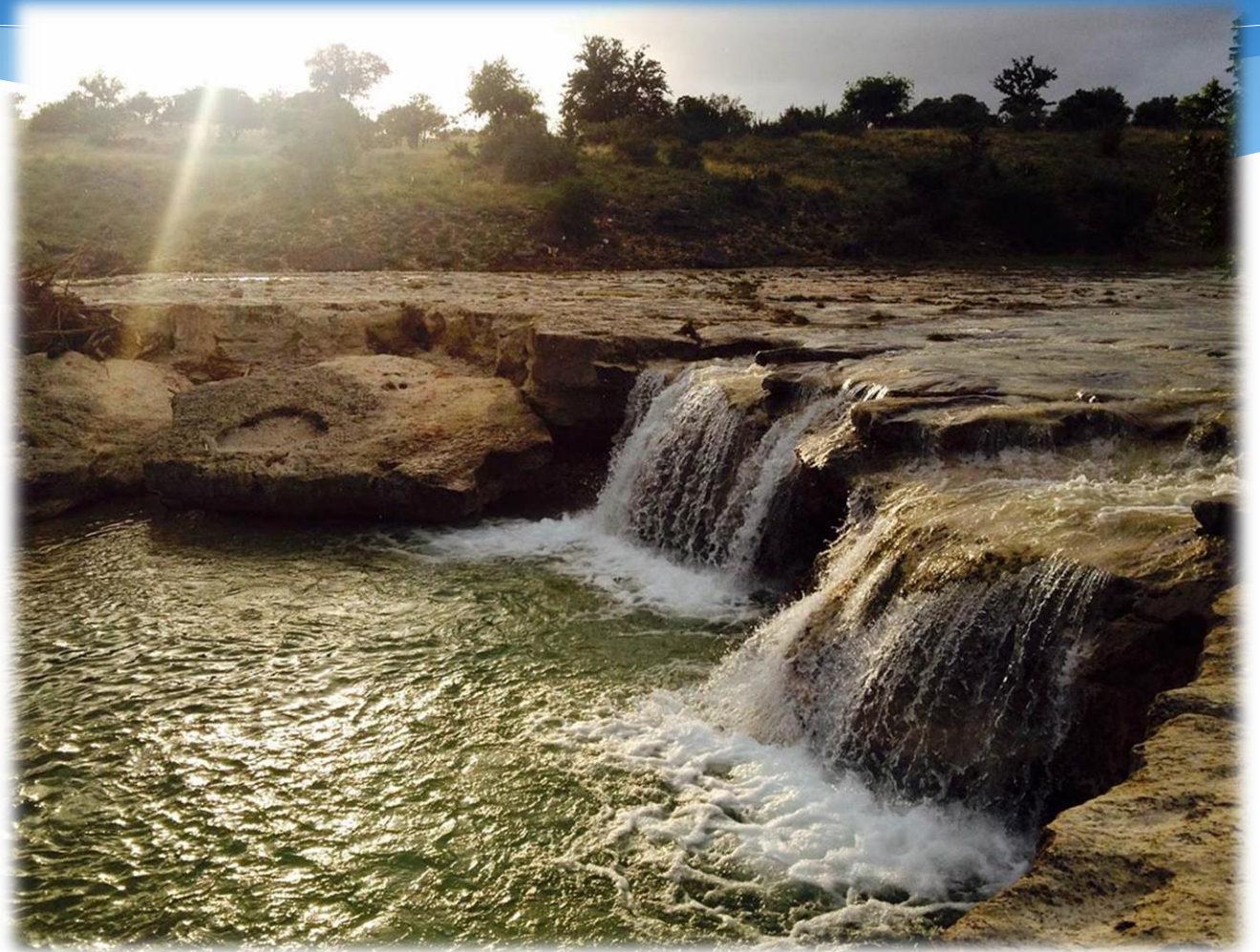
## Mazurek Ranch (3,753 Acres) Bandera/Medina/Uvalde Counties





## Mazurek Ranch (3,753 Acres) Bandera/Medina/Uvalde Counties

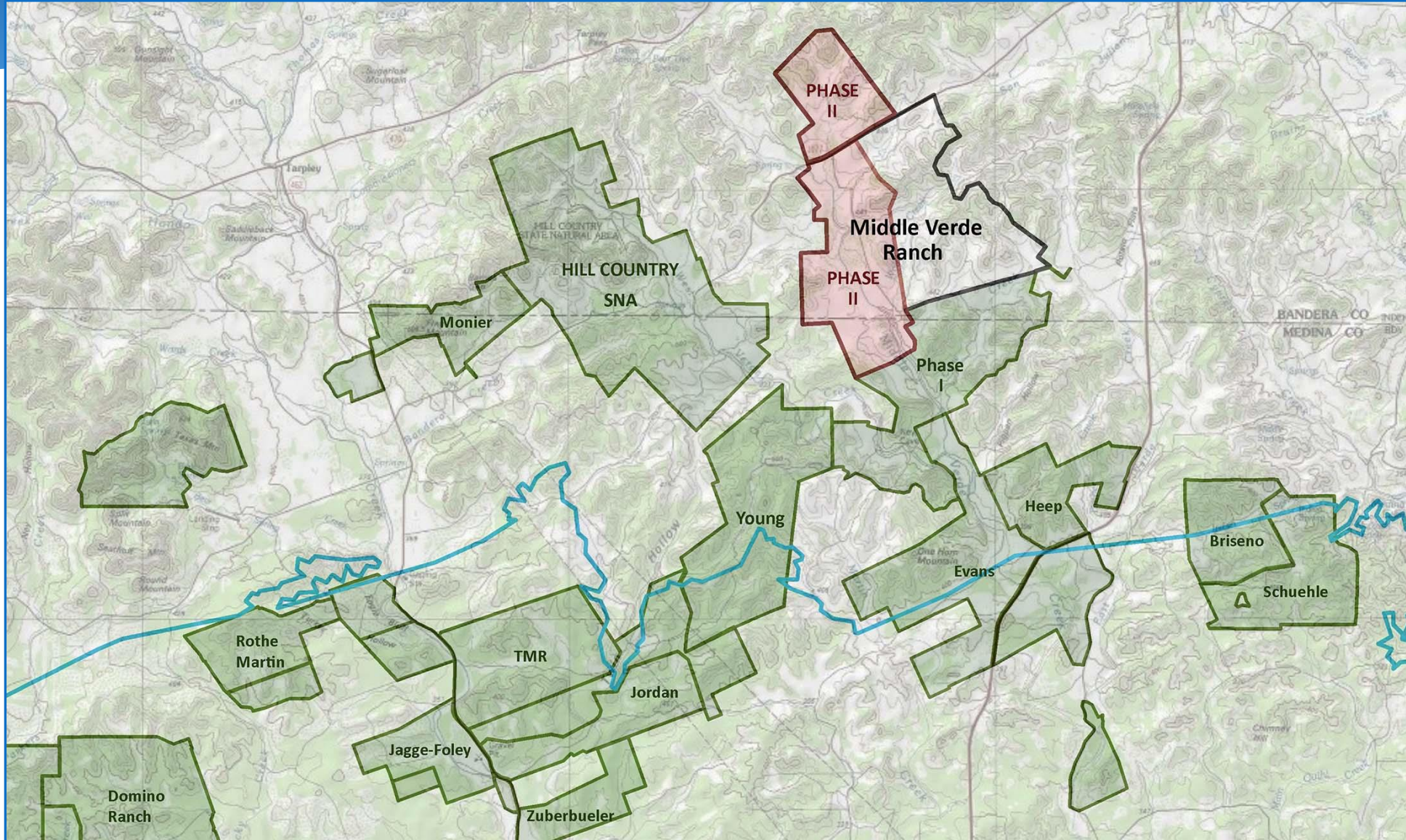
- Large ranch in Seco Creek watershed
- Includes Seco and tributary, springs, & dinosaur tracks
- EAA report found high water quantity, very high water quality benefit
- **Requesting final approval**







## Middle Verde Ranch (3,457 Acres) Bandera/Medina Counties





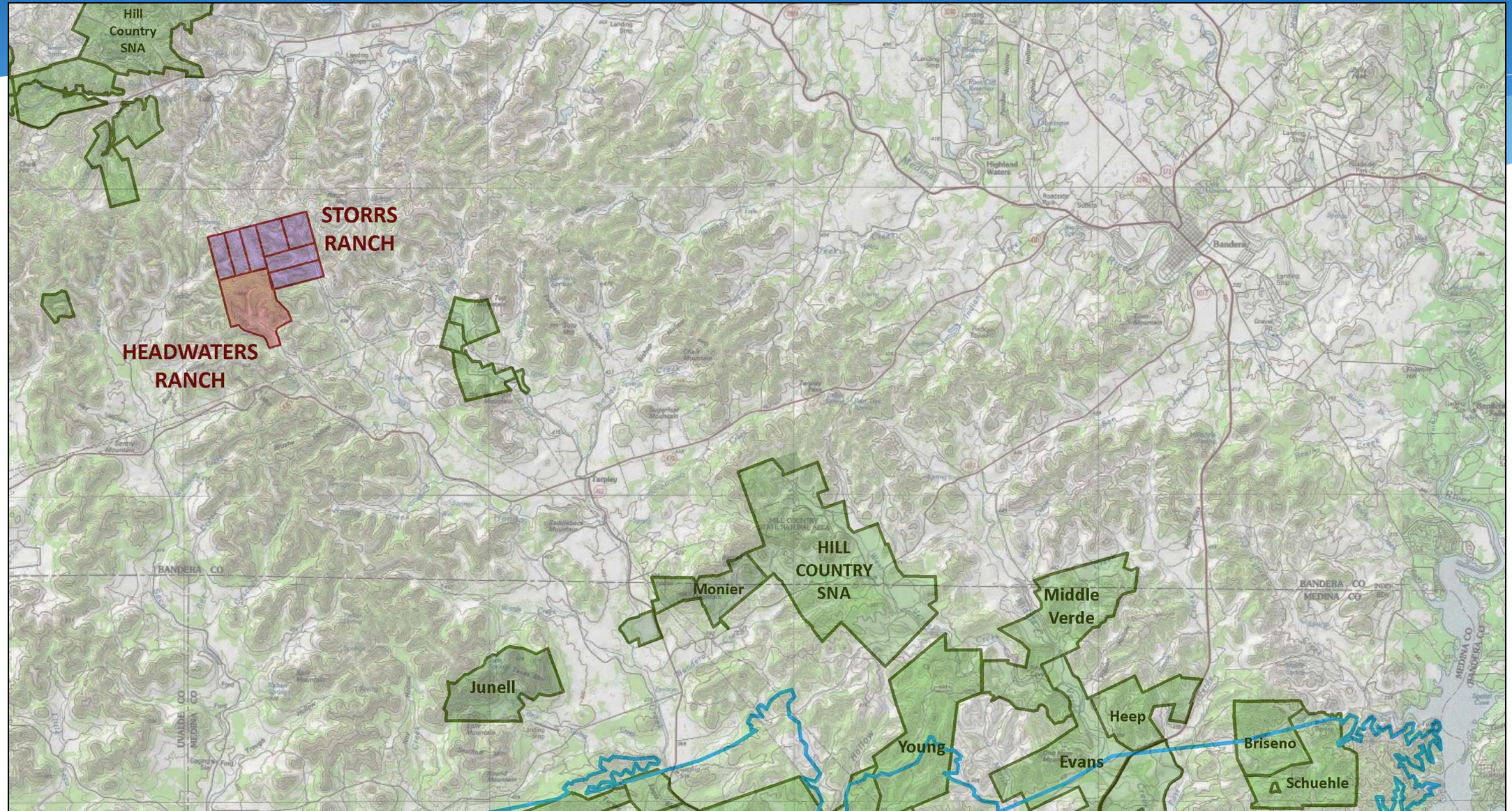
## Middle Verde Ranch (3,457 Acres) Bandera/Medina Counties

- City acquired easement on southern 1/3 of ranch in 2017
- Family wants to sell an easement on part or all of the remaining acreage
- Middle part of ranch ranked in Top 30% in new model; northern portion of ranch unranked
- Appraisal complete; EAA ranked high-to-very high water quantity and very high water quality benefits
- **Requesting Stage 2 approval**





# Storrs Ranches (1,324.93 Acres) Bandera County





## Storrs Ranches (1,324.93 Acres) Bandera County

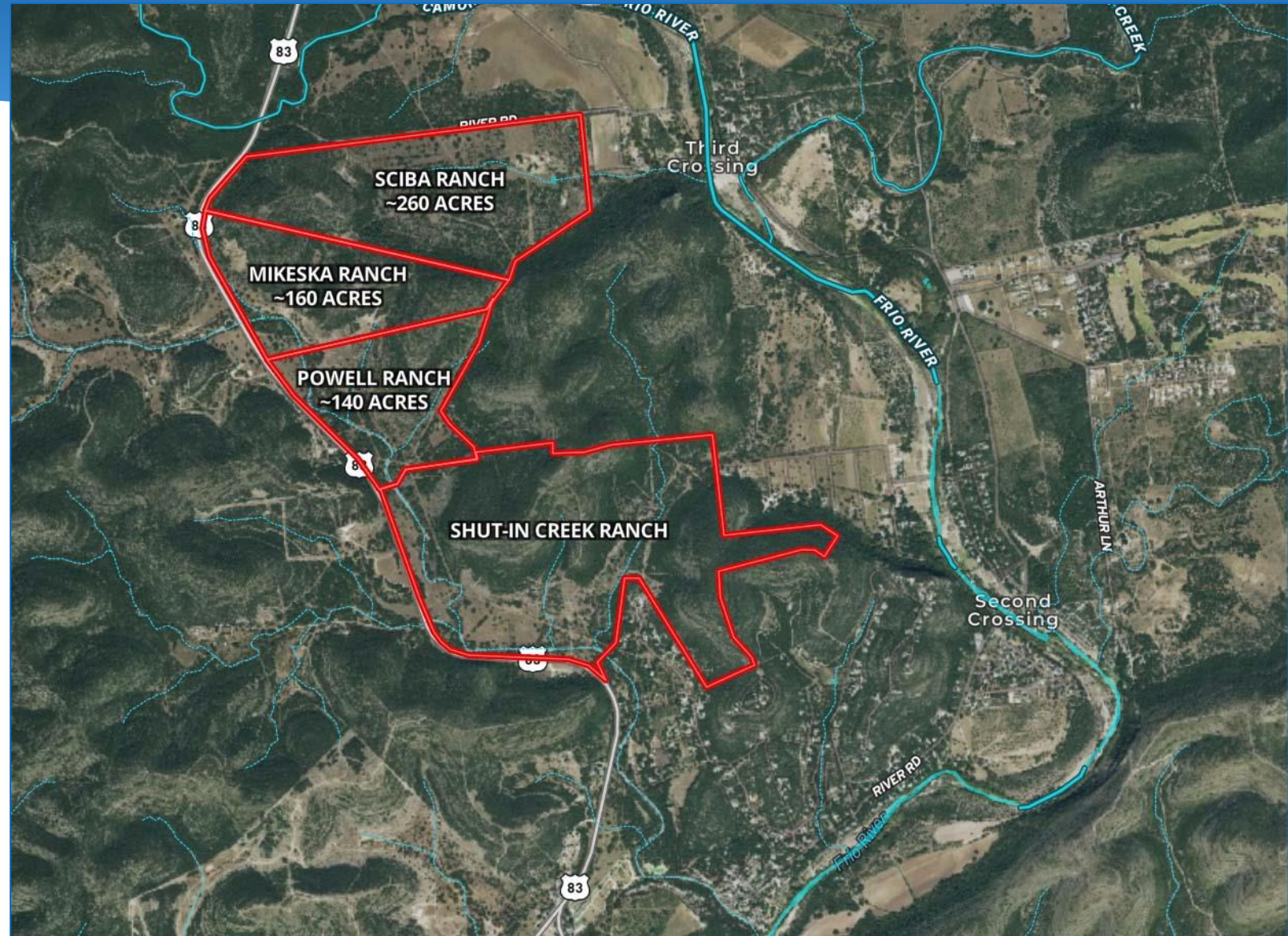
- Adjacent to Headwaters Ranch
- Upper sources of Hondo Creek and Seco Creek
- EAA report found high water quantity, very high water quality
- **Requesting Stage 2 approval**







## Mikeska Ranch (160 acres) and Powell Ranch (140 acres) Uvalde County





## Mikeska Ranch (160 acres) and Powell Ranch (140 acres) Uvalde County

- Near Concan on U.S. Hwy 83;  
adjacent to Shut-in Creek Ranch
- Top 30% and Top 50% in model
- **Requesting Stage 1 approval**

