

The Nature Conservancy



Middle Verde Ranch Phase II

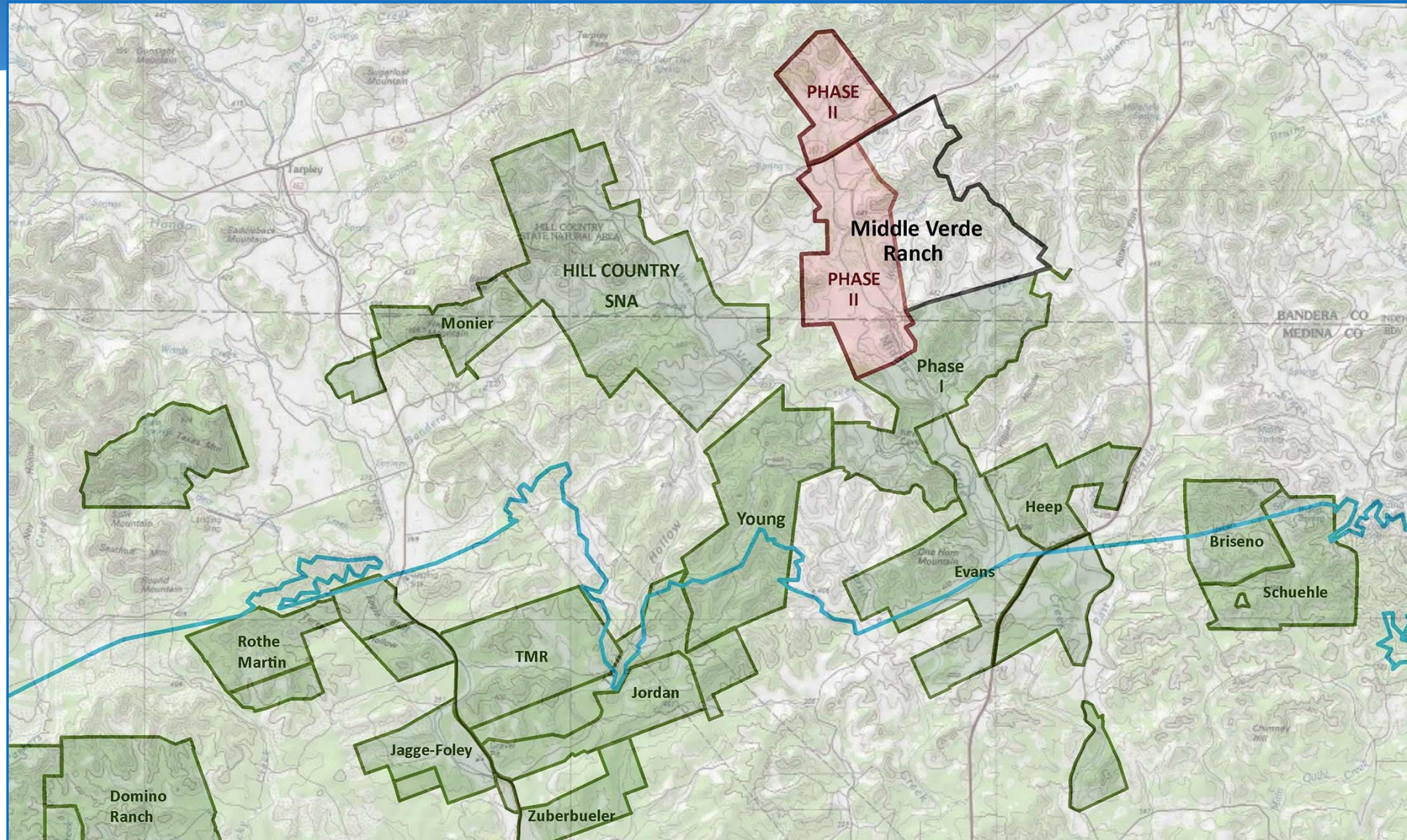
High Places Ranch II

Dillingham Ranch

Storrs Ranches/Garrison Addition

Moos Ranch

Middle Verde Ranch Phase II (3,457 Acres) Bandera/Medina Counties



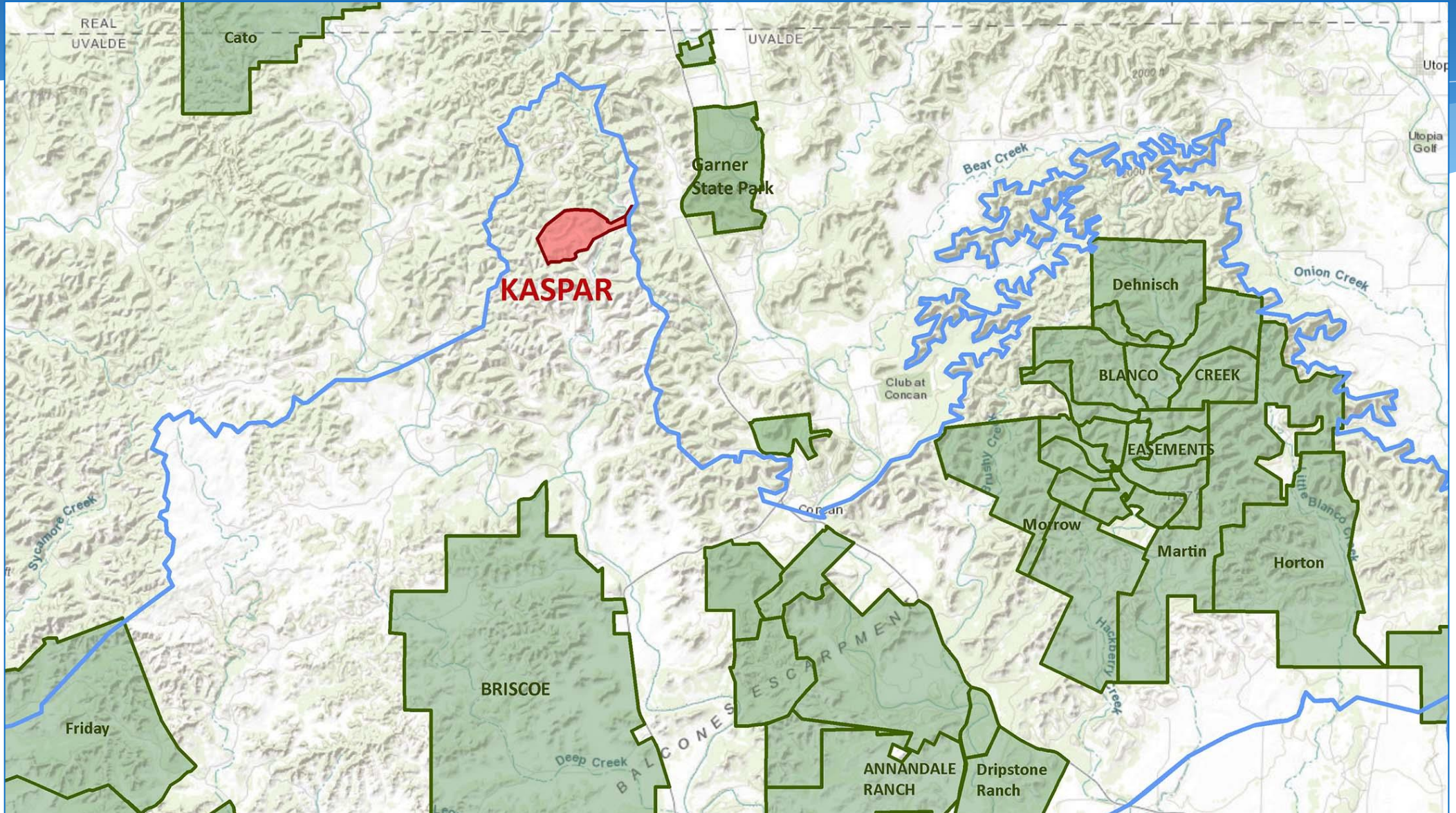
Middle Verde Ranch Phase II (3,457 Acres) Bandera/Medina Counties

- City acquired easement on southern 1/3 of ranch in 2017
- Family wants to sell an easement on another part of the ranch, including remainder of Verde Creek
- Top 30% in new model (part; northern portion unranked)
- EAA ranked high-to-very high water quantity and very high water quality benefits
- **Requesting Final Approval**





High Places Ranch LLC (Kaspar) (562.44 Acres) Uvalde County





High Places Ranch LLC (Kaspar) (562.44 Acres) Uvalde County

High Places Ranch LLC (Kaspar)

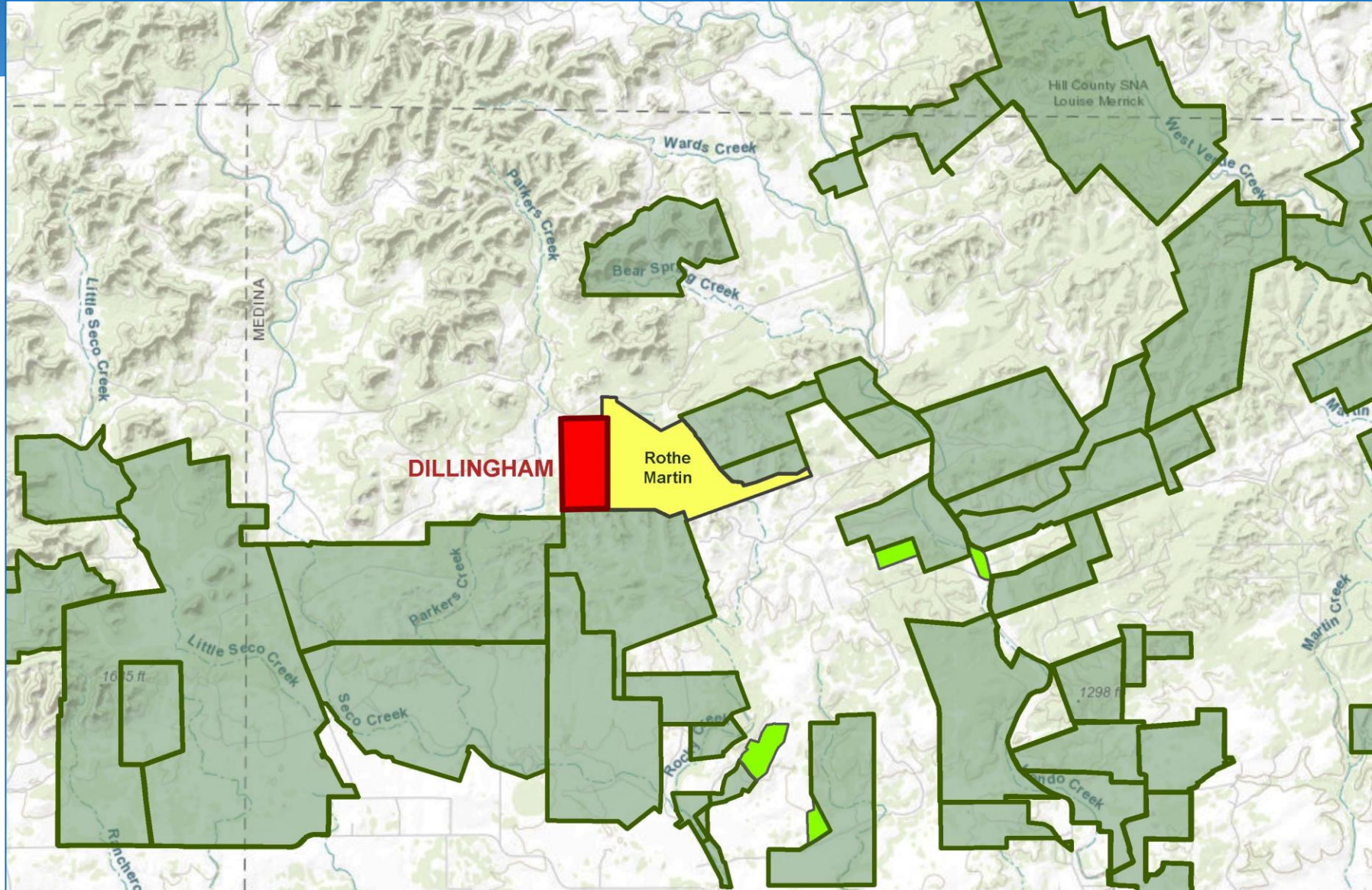
- 562 acres owned by Joey Kaspar – part of the former High Places Ranch
- Top 30% in model
- GA reports high water quantity and very high water quality benefits
- Dry Frio watershed

➤ **Requesting Final Approval**





Dillingham Ranch (690 Acres) Medina County





Dillingham Ranch (690 Acres) Medina County

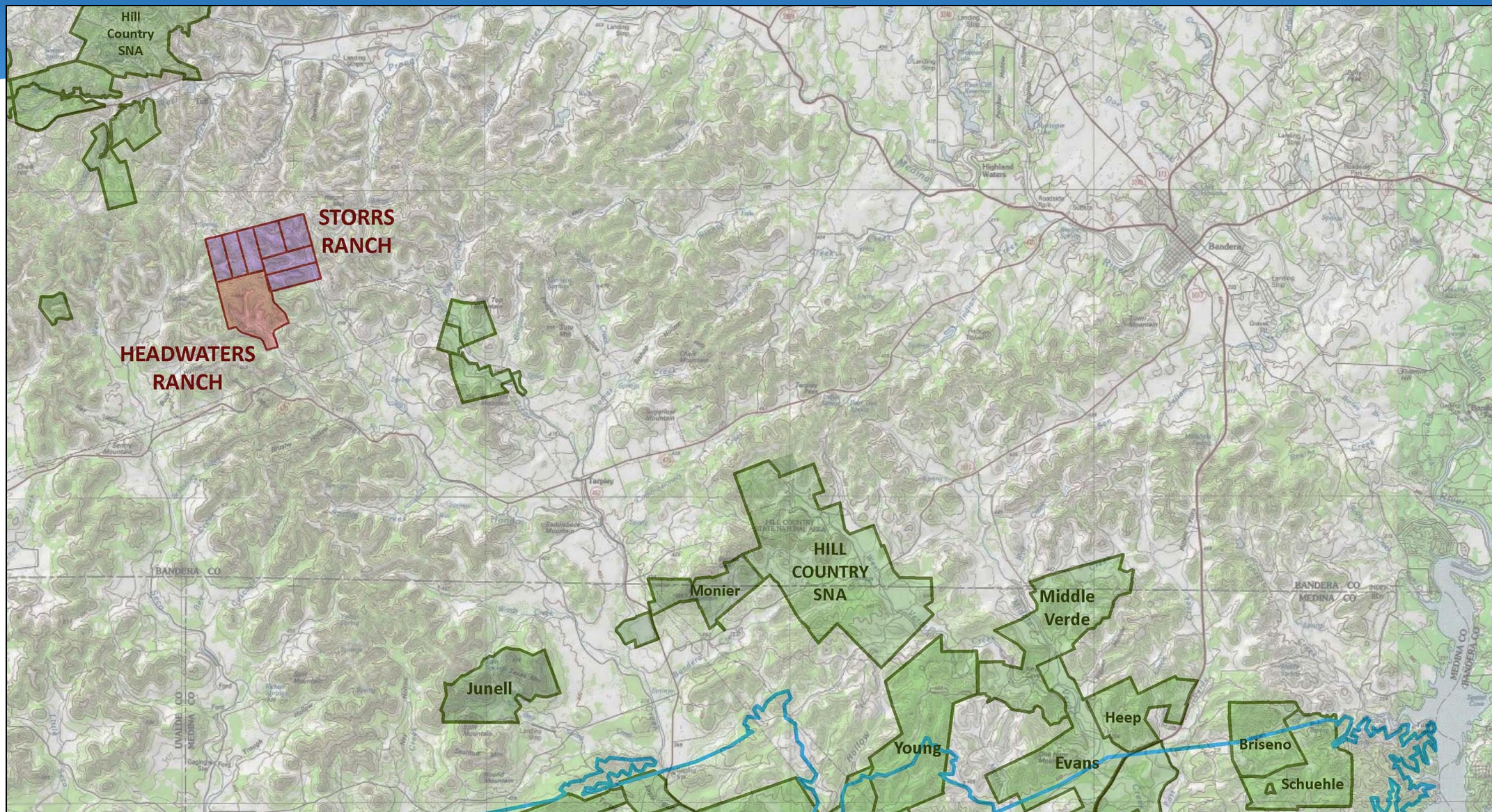
- 690 acres (with adjacent 35 acre carveout) owned by Naylene Dillingham
- Adjacent to Domino Ranch
- Seco Creek watershed
- Top 60% in SET model
- GA reports high to very high water quantity and high water quality benefits; appraisal completed

➤ **Requesting Stage 2 Consideration**





Storrs Ranches/Garrison Addition (~200 Acres) Bandera County



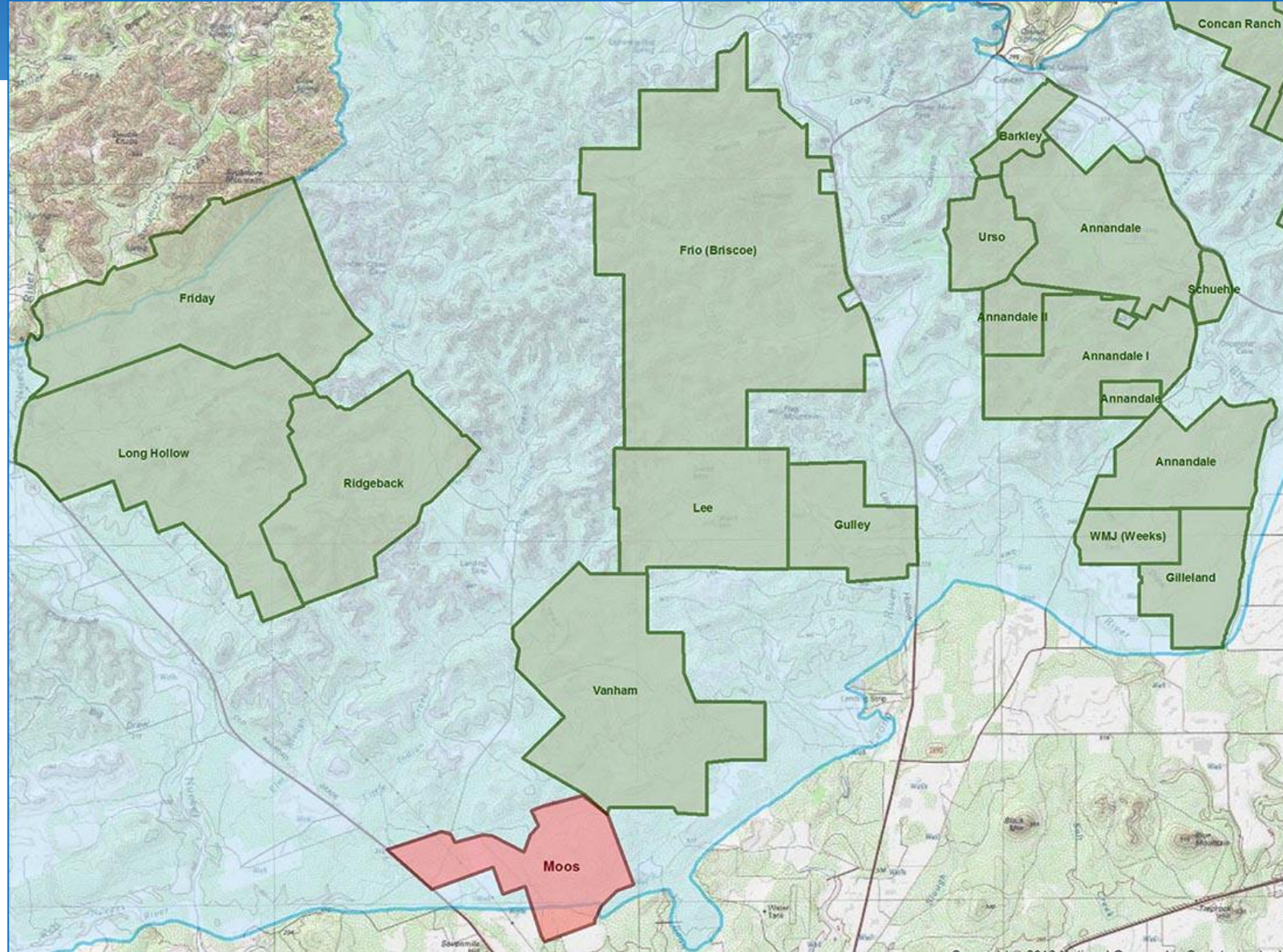
Storrs Ranches/Garrison Addition (~200 Acres) Bandera County

- Adjacent to 1,324 acres Garrison/Storrs Ranches approved for Stage 2 by CAB; also Headwaters Ranch
- Upper sources of Hondo Creek and Seco Creek
- EAA report found high water quantity, very high water quality
- Additional ~200 acre tract and homesite to be added to project
- **Requesting Stage 1 approval for additional properties**





Moos Ranch (2,900 Acres) Uvalde County





Moos Ranch (2,900 Acres) Uvalde County

Moos Ranch

- North of Uvalde, adjacent to Vanham Ranch (SAWS easement)
 - Top 50% in SET model
 - Previously considered by CAB; EAA ranked as a high priority in 2008 geological evaluation
 - GA reports high to very high water quantity and high water quality benefits
- **Requesting Stage 1B continuation**

